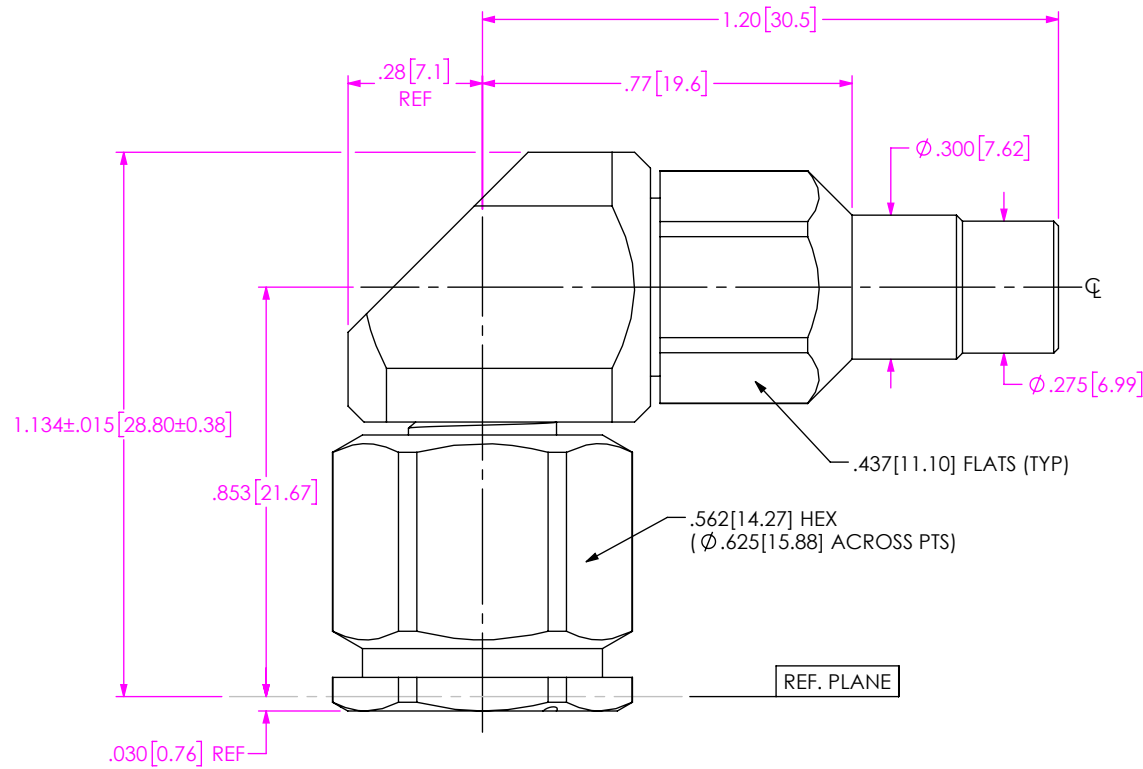


DO NOT SCALE FROM THIS PRINT



PRF04-P-C-EP-142-RS

SERIES
-04: TNCA

GENDER
-P: PLUG

TYPE
-C: CABLE

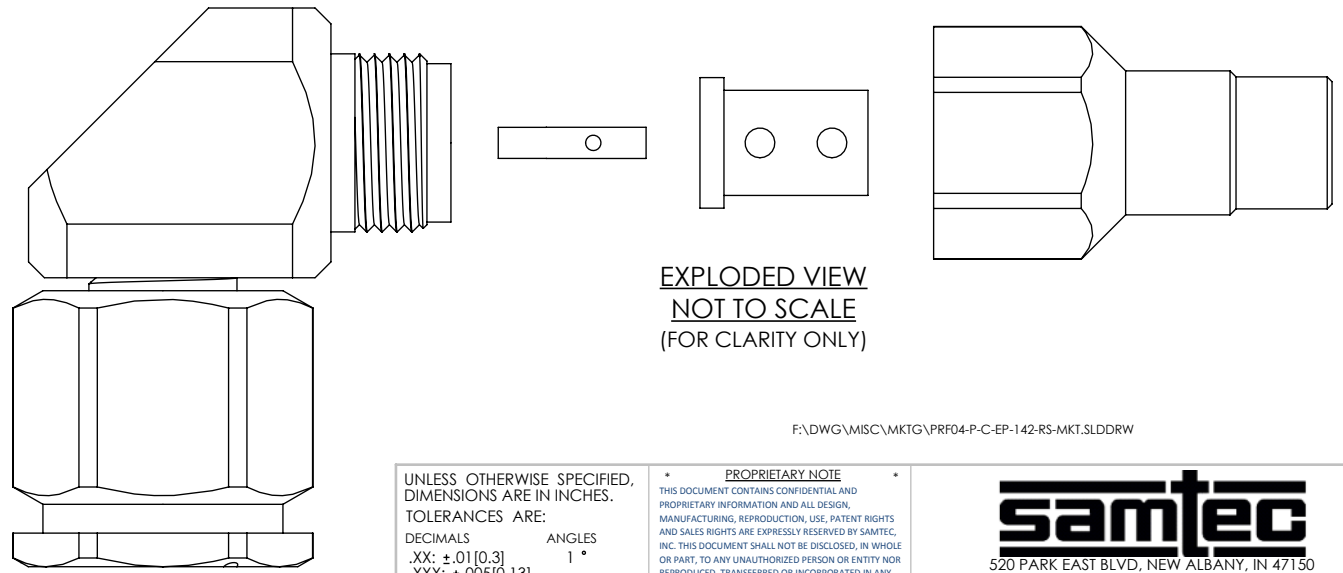
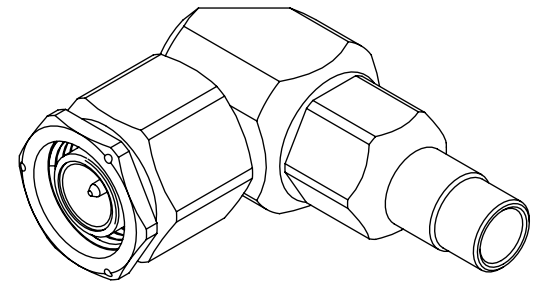
FINISH
-EP: 50 μ " EXTRA HEAVY GOLD CENTER CONTACT, PASSIVATED OUTER CONTACT

TERMINATION
S: SOLDER CLAMP

ORIENTATION
-R: RIGHT ANGLE

CABLE TYPE
-142: HARBOUR LL142

DESIGNED & DIMENSIONED IN INCHES[MILLIMETERS]



EXPLODED VIEW
NOT TO SCALE
(FOR CLARITY ONLY)

NOTES:

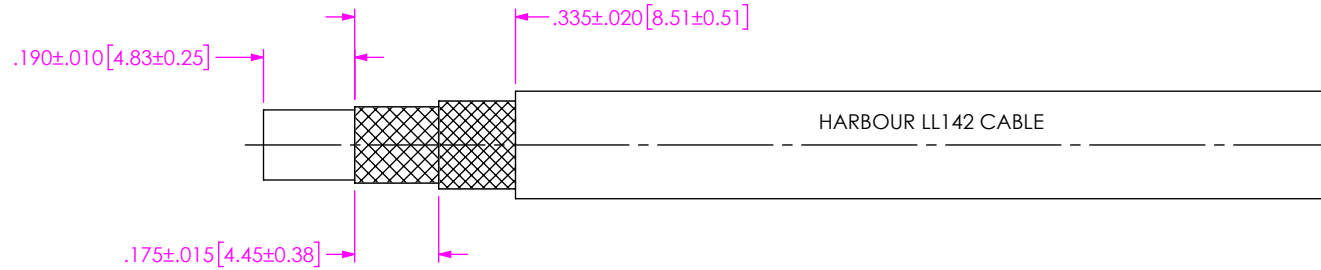
- MATERIAL:
BODIES, COUPLING NUT, CLAMP NUT: STAINLESS STEEL
CONTACTS, LOCK RING: BERYLLIUM COPPER
SOLDER FERRULE: BRASS ALLOY
INSULATORS: PTFE
GASKET: SILICONE RUBBER
- FINISH:
BODIES, COUPLING NUT, CLAMP NUT: PASSIVATED
CONTACTS, SOLDER FERRULE: 50 μ " MIN. GOLD OVER 50 μ " MIN. NICKEL PLATE
- PCI P/N: 3369

F:\DWG\MISC\MKTG\PRF04-P-C-EP-142-RS-MKT.SLDDRW

UNLESS OTHERWISE SPECIFIED, DIMENSIONS ARE IN INCHES. TOLERANCES ARE: DECIMALS ANGLES .XX: $\pm .01$ [0.3] 1° .XXX: $\pm .005$ [0.13] .XXXX: $\pm .0005$ [0.013]	* PROPRIETARY NOTE * THIS DOCUMENT CONTAINS CONFIDENTIAL AND PROPRIETARY INFORMATION AND ALL DESIGN, MANUFACTURING, REPRODUCTION, USE, PATENT RIGHTS AND SALES RIGHTS ARE EXPRESSLY RESERVED BY SAMTEC, INC. THIS DOCUMENT SHALL NOT BE DISCLOSED, IN WHOLE OR PART, TO ANY UNAUTHORIZED PERSON OR ENTITY NOR REPRODUCED, TRANSFERRED OR INCORPORATED IN ANY OTHER PROJECT IN ANY MANNER WITHOUT THE EXPRESS WRITTEN CONSENT OF SAMTEC, INC.	
		520 PARK EAST BLVD. NEW ALBANY, IN 47150 PHONE: 812-944-6733 FAX: 812-948-5047 e-Mail info@SAMTEC.com code 55322
		DESCRIPTION: TNCA RT. ANGLE PLUG. SOLDER CLAMP FOR HARBOUR LL142 CABLE DWG. NO. PRF04-P-C-EP-142-RS BY: SHERRY W 11/14/2019 SHEET 1 OF 3

CABLE APPLICATION VIEWS

1A. TRIM CABLE AS SHOWN.

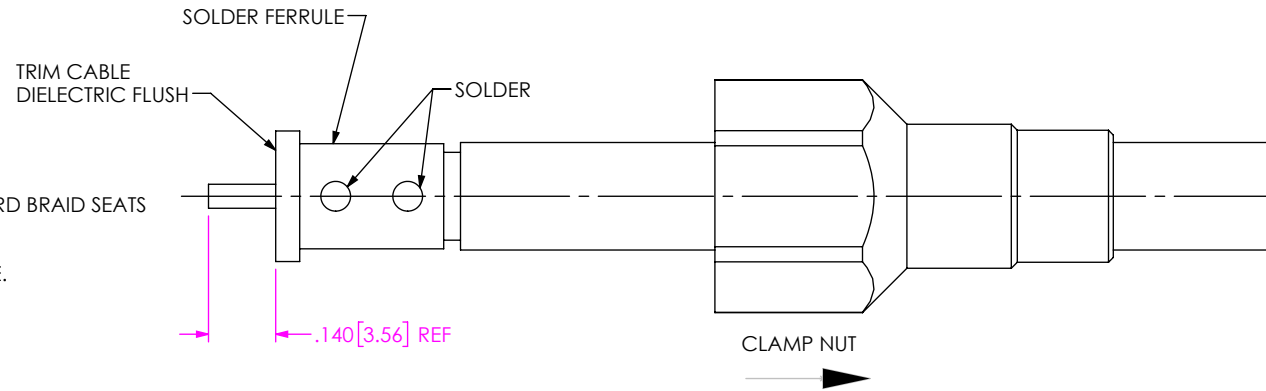


IN-PROCESS VIEW 1

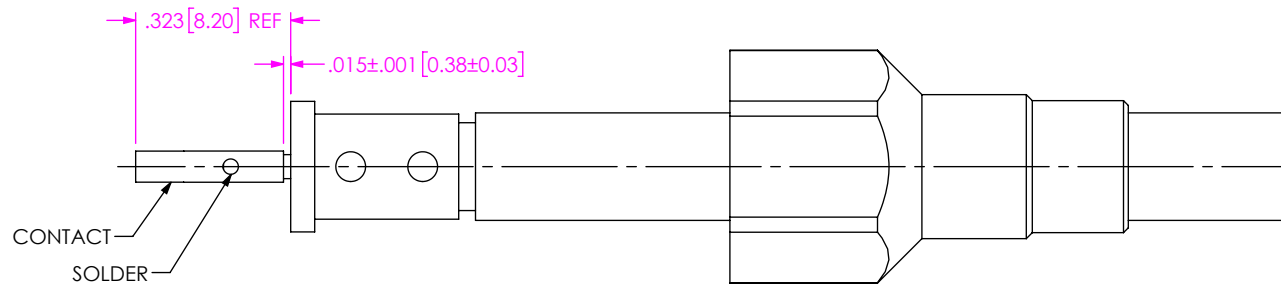
2A. SLIDE CLAMP NUT OVER CABLE AS SHOWN.

2B. INSERT CABLE INTO SOLDER FERRULE UNTIL FORWARD BRAID SEATS THEN SOLDER CABLE BRAIDS WHERE SHOWN.

2C. TRIM CABLE DIELECTRIC FLUSH TO SOLDER FERRULE.



IN-PROCESS VIEW 2



3. SOLDER CONTACT WITH GAP INDICATED AS SHOWN

IN-PROCESS VIEW 3

PROPRIETARY NOTE
 THIS DOCUMENT CONTAINS CONFIDENTIAL AND PROPRIETARY INFORMATION AND ALL DESIGN, MANUFACTURING, REPRODUCTION, USE, PATENT RIGHTS AND SALES RIGHTS ARE EXPRESSLY RESERVED BY SAMTEC, INC. THIS DOCUMENT SHALL NOT BE DISCLOSED, IN WHOLE OR PART, TO ANY UNAUTHORIZED PERSON OR ENTITY NOR REPRODUCED, TRANSFERRED OR INCORPORATED IN ANY OTHER PROJECT IN ANY MANNER WITHOUT THE EXPRESS WRITTEN CONSENT OF SAMTEC, INC.



520 PARK EAST BLVD, NEW ALBANY, IN 47150
 PHONE: 812-944-6733 FAX: 812-948-5047
 e-Mail info@SAMTEC.com code 55322

DO NOT SCALE DRAWING

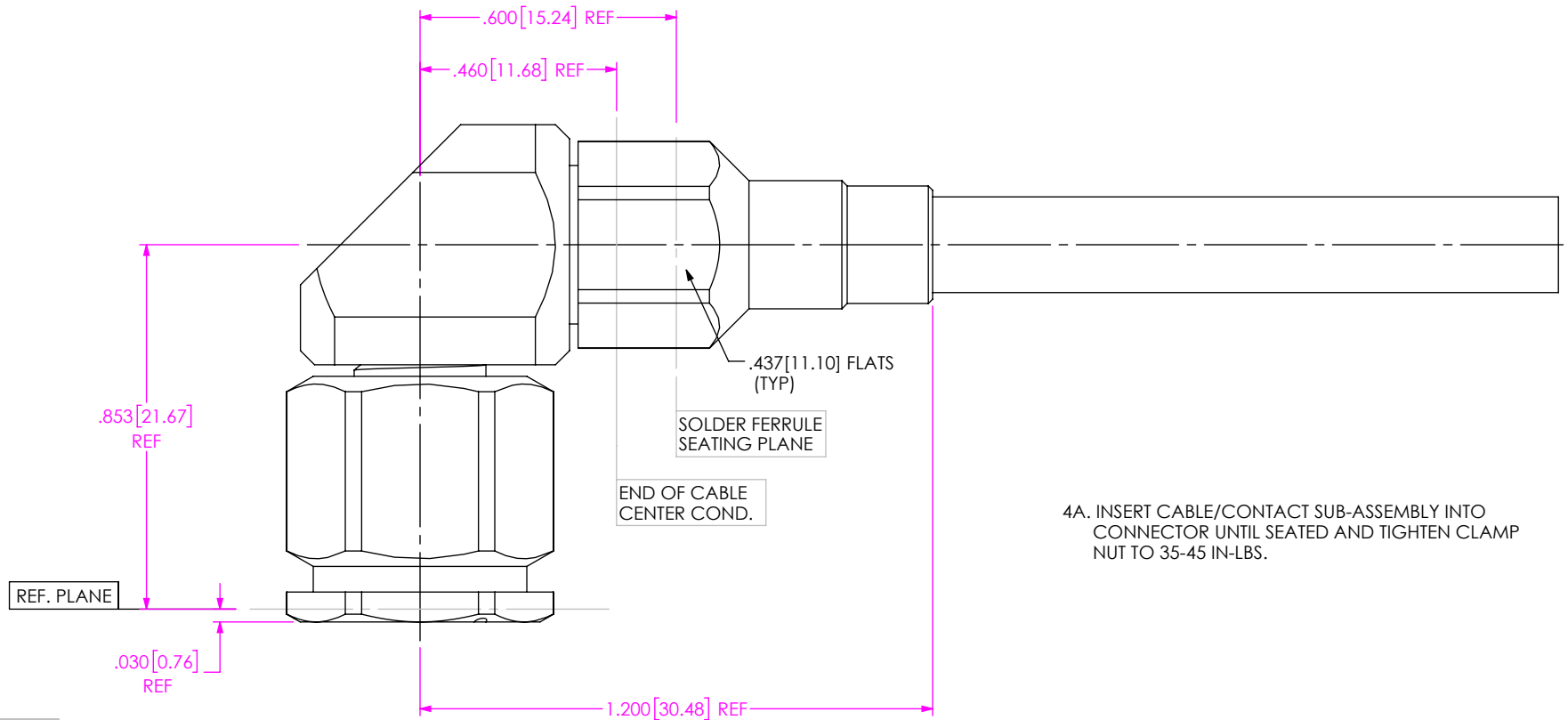
SHEET SCALE: 2.5:1

DESCRIPTION: TNCA RT. ANGLE PLUG, SOLDER CLAMP FOR HARBOUR LL142 CABLE

DWG. NO. PRF04-P-C-EP-142-RS

BY: SHERRY W 11/14/2019 SHEET 2 OF 3

CABLE APPLICATION VIEWS



4A. INSERT CABLE/CONTACT SUB-ASSEMBLY INTO CONNECTOR UNTIL SEATED AND TIGHTEN CLAMP NUT TO 35-45 IN-LBS.

IN-PROCESS VIEW 4

PROPRIETARY NOTE
 THIS DOCUMENT CONTAINS CONFIDENTIAL AND PROPRIETARY INFORMATION AND ALL DESIGN, MANUFACTURING, REPRODUCTION, USE, PATENT RIGHTS AND SALES RIGHTS ARE EXPRESSLY RESERVED BY SAMTEC, INC. THIS DOCUMENT SHALL NOT BE DISCLOSED, IN WHOLE OR PART, TO ANY UNAUTHORIZED PERSON OR ENTITY NOR REPRODUCED, TRANSFERRED OR INCORPORATED IN ANY OTHER PROJECT IN ANY MANNER WITHOUT THE EXPRESS WRITTEN CONSENT OF SAMTEC, INC.



520 PARK EAST BLVD, NEW ALBANY, IN 47150
 PHONE: 812-944-6733 FAX: 812-948-5047
 e-Mail info@SAMTEC.com code 55322

DO NOT SCALE DRAWING

SHEET SCALE: 2.5:1

DESCRIPTION: TNCA RT. ANGLE PLUG, SOLDER CLAMP FOR HARBOUR LL142 CABLE

DWG. NO. PRF04-P-C-EP-142-RS

BY: SHERRY W 11/14/2019 SHEET 3 OF 3