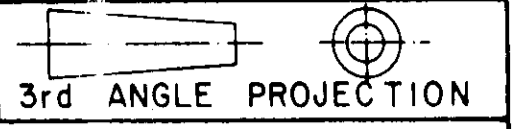


8 7 6 5 4 3 2 1

DO NOT SCALE
DIMENSIONS IN mm.

METRIC



C 626 241

G

F

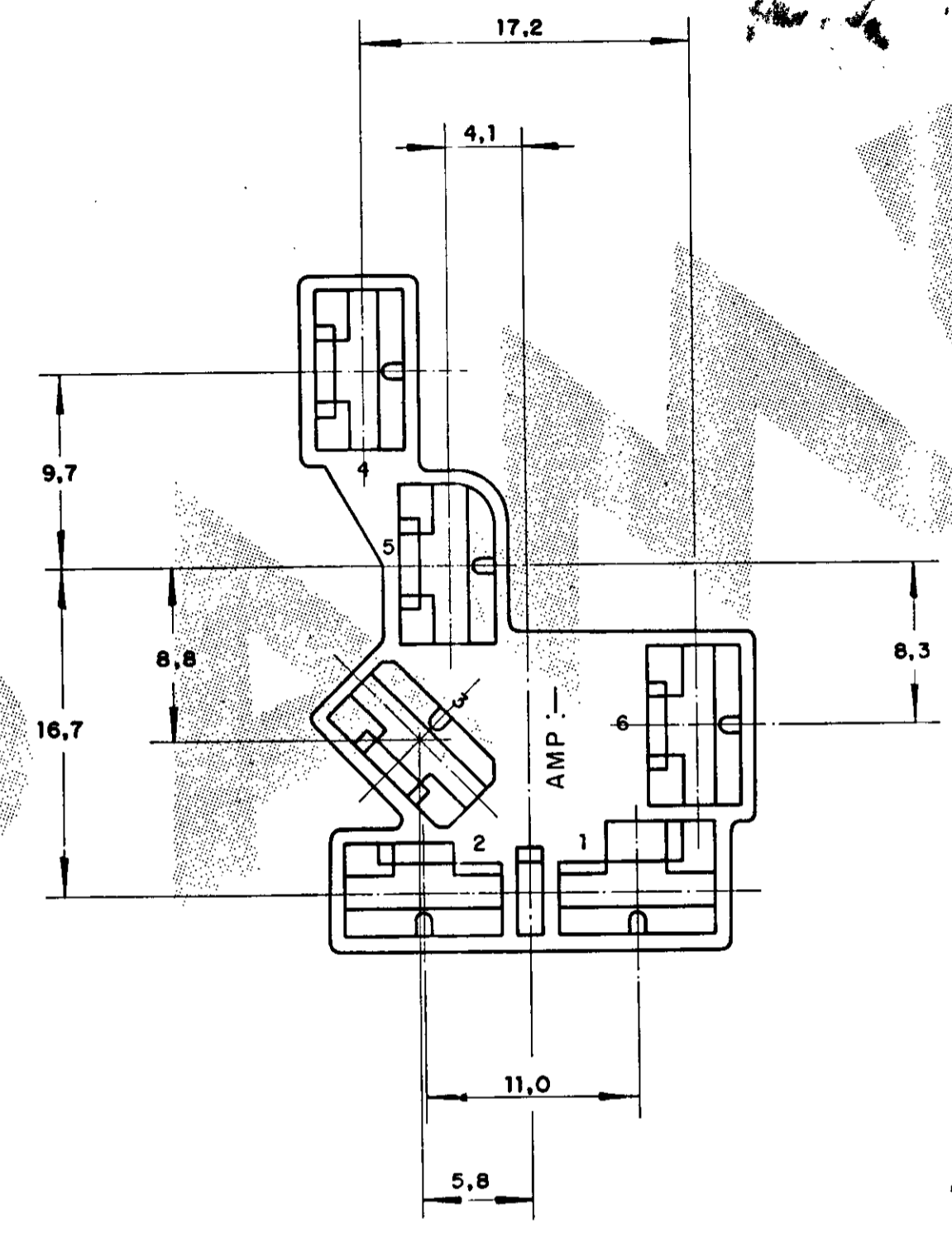
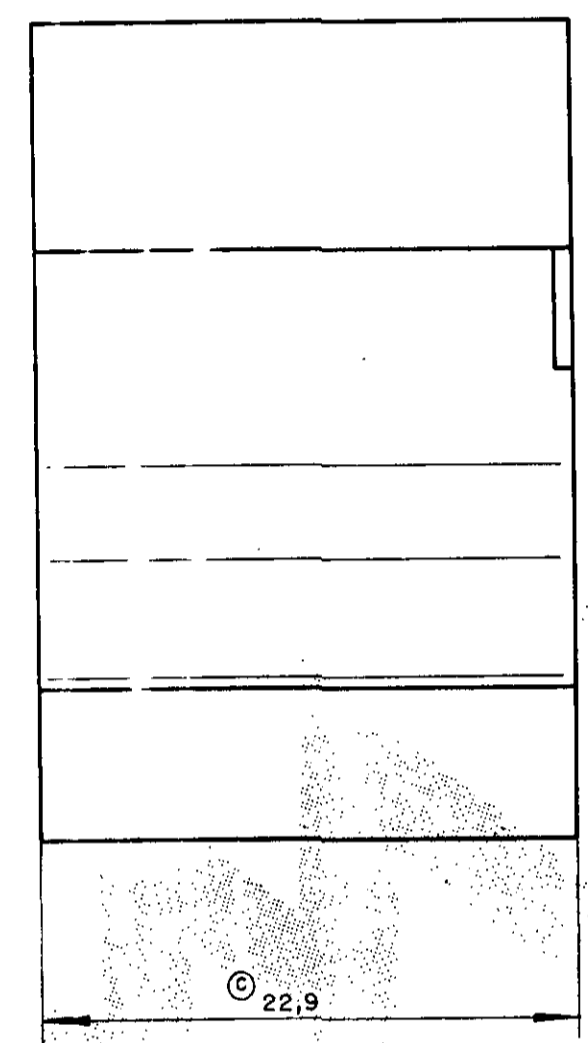
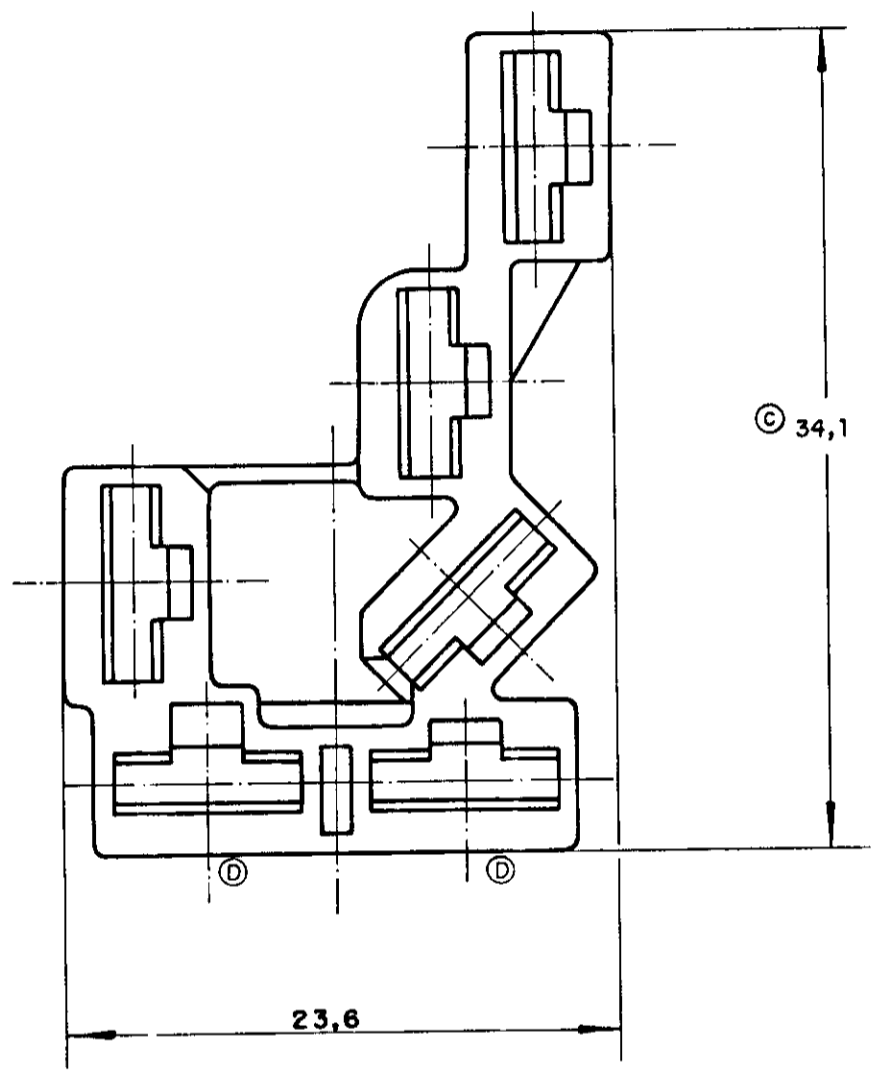
E

D

C

B

A



- ①- SEE RESTRICTED CUSTOMER DRAWING NUMBER 626241-1. △- VER DESENHO RESTRITO 626241-1.
- ② OBSOLETE PARTS: OBSOLETE CIS STREAMLINING PER D.RENAUD/D.SINISI

② OBSOLETE	②	PRETO BLACK	P.A. 6.6	626 241 - 3
	②			△ 626 241 - 2
	②			△ 626 241 - 1
PART NUMBER V.W.		FINISH		MATERIAL
CUSTOMER DWG for REFERENCE ONLY		THIS DRAWING IS UNPUBLISHED RELEASED FOR PUBLICATION 19		
		C COPYRIGHT 1983 BY AMP DO BRASIL LTDA. ALL INTERNATIONAL RIGHTS RESERVED AMP PRODUCTS MAY BE COVERED BY U.S. AND FOREIGN PATENTS AND/OR PATENTS PENDING.		
		TOLERANCES UNLESS OTHERWISE STATED DEC. ±0,5 ANGLES ±1°	TMS DIA RANGE	WIRE RANGE
		AMP do BRASIL LTDA. São Paulo, Brasil		
D1	REV PER ECO-09-026444	KK	AEG	17DEC08
D	REVISADO EC 415-95	M.R.B.	JR	11/01/95
C	ERA 250 E 35,7 EON 3625	PF		07-01-93
B	REVISADO	G.F.M.	T.A.B.V.	4.6.84
A	REDES. C/ MODIFICAÇÕES	G.F.M.	T.A.B.V.	18.8.83
ISS	REVISION RECORD	DR	CHK	DATE
DESCRIPTION		AMP		
6 WAY .250 FASTIN-ON REC. HSG				
A2	DWG NO C 626 241	SHEET 1 OF 1		