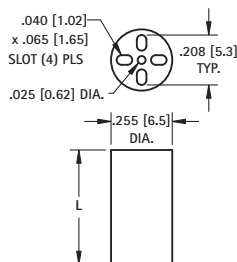
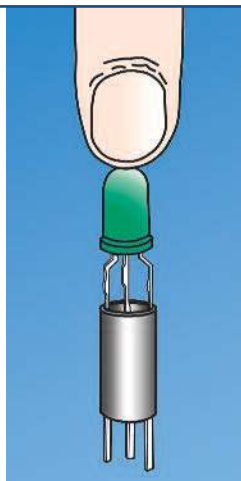


"UNIVERSAL" FOR T-1 & T-1 3/4

- Unique design separates leads and retains Tri-Lead and Bi-Lead components.
- Designed for PC board mounting of Tri-Lead and Bi-Lead T-1 and T-1 3/4 LEDs
- Provides height control, lead retention and stability.
- Also suitable for mounting lamps, resistors, transistors, diodes, capacitors, etc.



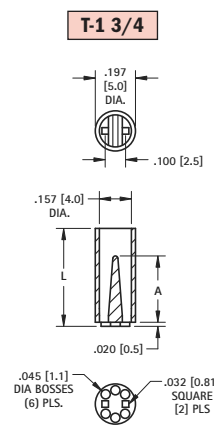
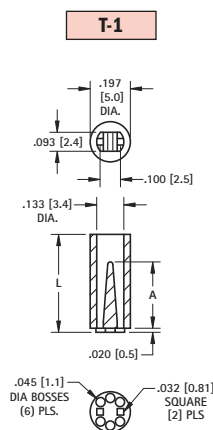
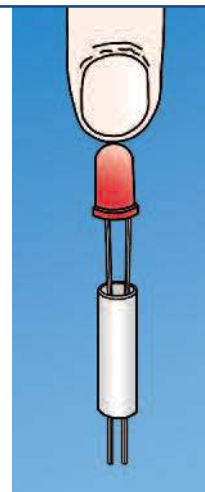
MATERIAL: Black PVC, UL Rated 94V-0

| FOR T-1 3/4 and T-1 | | | |
|---------------------|------------|----------|-------------|
| CAT. NO. | L LENGTH | CAT. NO. | L LENGTH |
| 8900 | .120 (3.0) | 8916 | .400 (10.2) |
| 8901 | .140 (3.6) | 8917 | .420 (10.7) |
| 8902 | .160 (4.1) | 8918 | .440 (11.2) |
| 8903 | .180 (4.6) | 8919 | .450 (11.4) |
| 8904 | .200 (5.1) | 8920 | .460 (11.7) |
| 8905 | .220 (5.6) | 8921 | .480 (12.2) |
| 8906 | .240 (6.1) | 8922 | .500 (12.7) |
| 8907 | .250 (6.4) | 8923 | .550 (14.0) |
| 8908 | .260 (6.6) | 8924 | .600 (15.2) |
| 8909 | .280 (7.1) | 8925 | .650 (16.5) |
| 8910 | .300 (7.6) | 8926 | .700 (17.8) |
| 8911 | .320 (8.1) | 8927 | .750 (19.1) |
| 8912 | .340 (8.6) | 8928 | .800 (20.3) |
| 8913 | .350 (8.9) | 8929 | .850 (21.6) |
| 8914 | .360 (9.1) | 8930 | .900 (22.9) |
| 8915 | .380 (9.7) | 8931 | .925 (23.5) |

"SELF-ALIGNING" FOR BI-LEAD T-1 & T-1 3/4

KEY FEATURES

- Positive self-alignment of leads on .100 (.25) centers.
- No special tools required
- This features an internally tapered barrier which guides the leads and eliminates crimping or shorting.
- The bottom bosses serve the dual purpose of heat dissipation and easy post soldering cleanup.



MATERIAL: Natural Nylon, UL Rated 94V-2

| T-1 3/4 | T-1 | L LENGTH | A REF. | T-1 3/4 | T-1 | L LENGTH | A REF. | |
|---------|------|------------|------------|------------|------|-------------|-------------|-------------|
| 8311 | 7351 | .120 (3.0) | .075 (1.9) | 8327 | 7367 | .400 (10.2) | .325 (8.3) | |
| 8312 | 7352 | .140 (3.6) | | 8328 | 7368 | .420 (10.7) | | |
| 8313 | 7353 | .160 (4.1) | | 8329 | 7369 | .440 (11.2) | | |
| 8314 | 7354 | .180 (4.6) | | 8330 | 7370 | .450 (11.4) | | |
| 8315 | 7355 | .200 (5.1) | | 8331 | 7371 | .460 (11.7) | | |
| 8316 | 7356 | .220 (5.6) | | 8332 | 7372 | .480 (12.2) | | |
| 8317 | 7357 | .240 (6.1) | | 8333 | 7373 | .500 (12.7) | | |
| 8318 | 7358 | .250 (6.4) | | 8334 | 7374 | .550 (14.0) | | .450 (11.4) |
| 8319 | 7359 | .260 (6.6) | | 8335 | 7375 | .600 (15.2) | | |
| 8320 | 7360 | .280 (7.1) | | .190 (4.8) | 8336 | 7376 | | .650 (16.5) |
| 8321 | 7361 | .300 (7.6) | 8337 | | 7377 | .700 (17.8) | | |
| 8322 | 7362 | .320 (8.1) | 8338 | | 7378 | .750 (19.1) | | |
| 8323 | 7363 | .340 (8.6) | 8339 | | 7379 | .800 (20.3) | | |
| 8324 | 7364 | .350 (8.9) | 8340 | | 7380 | .850 (21.6) | .690 (17.5) | |
| 8325 | 7365 | .360 (9.1) | 8341 | | 7381 | .900 (22.9) | | |
| 8326 | 7366 | .380 (9.7) | 8342 | | 7382 | .925 (23.5) | | |