

## Evaluating the *i*Coupler **ADuM3150** with the **EVAL-ADuM3150Z** Evaluation System

### FEATURES

- Access to all six data channels
- Access to the DCLK delayed clock
- Multiple connection options
- Support for Tektronix active probes
- Provision for cable terminations
- Support for PCB edge-mounted coaxial connectors
- Easy configuration
- Installed SPIsulator digital isolator: **ADuM3150BRSZ**  
in the 20-lead SSOP package

### SUPPORTED SPIsulator MODELS

- ADuM3150ARSZ**
- ADuM3150BRSZ**
- ADuM4150ARIZ**
- ADuM4150BRIZ**

### GENERAL DESCRIPTION

The **EVAL-ADuM3150Z** supports the **ADuM3150ARSZ** and **ADuM3150BRSZ**, which are 6-channel SPIsulator<sup>®</sup> isolators optimized for use in SPI applications. They include two low speed channels and a clock delay channel for the implementation of 40 MHz SPI data transfers. The evaluation board provides a JEDEC standard, 20-lead SSOP pad layout, support for signal distribution, loopback, and loads referenced to  $V_{DDx}$  or  $GND_x$ , as well as optimal bypass capacitance. Signal sources can be wired onto the board as well as brought onto the board through edge-mounted SMA connectors (sold separately) or terminal blocks for power connections. The board includes 200 mil header positions for compatibility with Tektronix<sup>®</sup> active probes.

The **EVAL-ADuM3150Z** evaluation board can be used to evaluate the **ADuM4150ARIZ** and the **ADuM4150BRIZ** devices. Although the pad layout on the **EVAL-ADuM3150Z** evaluation board does not support the **ADuM4150ARIZ** and the **ADuM4150BRIZ** 20-lead SOIC\_IC packages, these devices can be evaluated with the **ADuM3150ARSZ** or the **ADuM3150BRSZ**. The **ADuM4150ARIZ** and **ADuM3150ARSZ** differ by package and isolation capabilities, but are functionally equivalent for evaluation. The same is true for the **ADuM4150BRIZ** and **ADuM3150BRSZ** devices.

The board follows best printed circuit board (PCB) design practices for 4-layer boards, including a full power and ground plane on each side of the isolation barrier. No other electromagnetic interference (EMI) or noise mitigation design features are included on this board. In cases of very high speed operation or when ultralow emissions are required, refer to the [AN-1109 Application Note](#) for additional board layout techniques.

For full details, see the **ADuM3150** data sheet, which must be used in conjunction with this user guide when using the **EVAL-ADuM3150Z** evaluation board.

**TABLE OF CONTENTS**

Features .....	1	Power Input.....	4
Supported SPI Isolator Models.....	1	Data Input/Output (I/O) Structures.....	5
General Description .....	1	Bypass on the PCB .....	6
Revision History .....	2	High Voltage Capability .....	6
Photograph of the Evaluation Board.....	3	Evaluation Board Schematics and Artwork.....	7
Evaluation Board Circuitry .....	4	Ordering Information.....	9
PCB Evaluation Goals.....	4	Bill of Materials.....	9
Connectors .....	4	Related Links.....	9

**REVISION HISTORY**

**7/2017—Rev. 0 to Rev. A**

Changes to Supported SPI Isolator Models Section and General Description .....	1
Moved Photograph of the Evaluation Board and Figure 1 .....	3
Changed ADuM3151BRSZ to ADuM3150BRSZ, Table 1 .....	9

**7/2014—Revision 0: Initial Version**

# PHOTOGRAPH OF THE EVALUATION BOARD

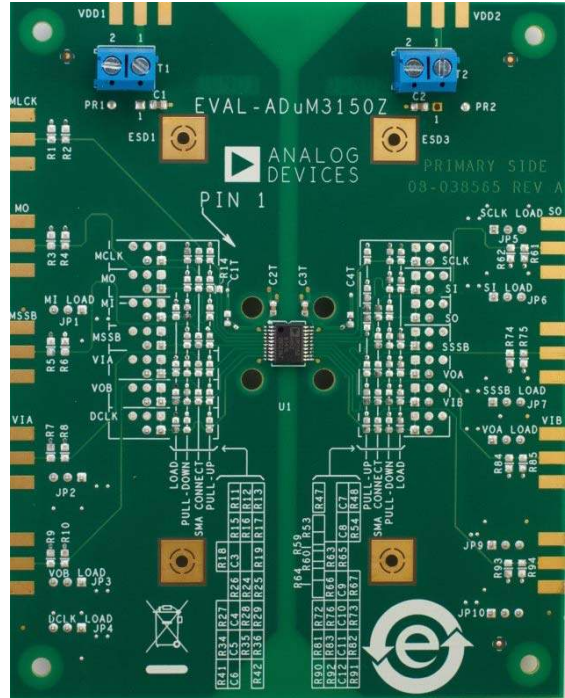


Figure 1. EVAL-ADuM3150Z Evaluation Board

12495-001

## EVALUATION BOARD CIRCUITRY

### PCB EVALUATION GOALS

The [EVAL-ADuM3150Z](#) board is intended to achieve the following goals:

- Evaluate the full range of SPIsulator data transfer functions.
- Power each side of the SPIsulator isolator independently.
- Allow high differential voltage to be applied between the two sides of the SPIsulator isolator.
- Allow connecting easily to power, other circuit boards and instrumentation.

Although the evaluation board comes with the [ADuM3150BR5Z](#) SPIsulator digital isolator installed, the board is also compatible with the [ADuM3150ARSZ](#).

### CONNECTORS

The PCB provides support for three types of interconnections:

- SMA edge-mounted connectors.
- Through-hole signal ground pairs.
- Terminal blocks for power connections.

With these three options, both temporary and permanent connections to the board can easily be made.

When coaxial connections are desired, SMA connector positions are available for  $V_{DD1}$  and  $V_{DD2}$  power supplies, as well as all digital inputs. These SMA connector positions are left unpopulated so that the user can customize the connectors for a given application.

Pins that are outputs only may not have access to a coaxial connection. The native output buffers of the [ADuM3150](#) are not capable of driving a  $50\ \Omega$  coaxial terminated cable. Bring out signals leaving the board through the provided through holes or headers.

Figure 2 shows examples of installed SMA connectors; these connectors were chosen because they are not only low profile and provide excellent mechanical connections to the PCB but also support  $50\ \Omega$  coaxial cabling. Because most lab equipment is compatible with BNC connectors, adaptors may be required to use some on-board connectors.

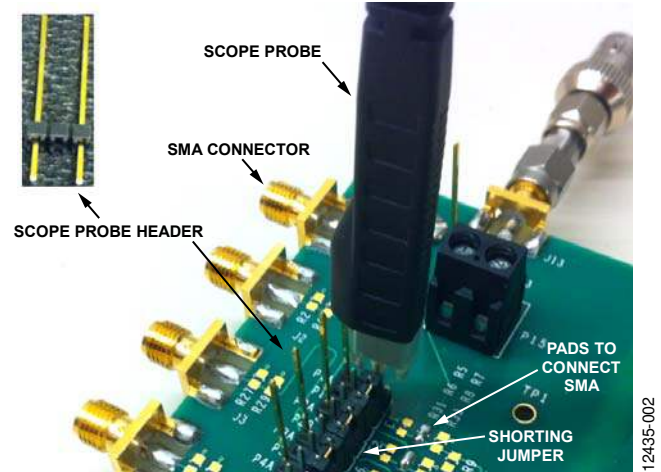


Figure 2. Optional Components

Power can be connected through the T1 and T2 terminal blocks or can be wired directly to the PCB via the PR1 and PR2 through-hole positions or the  $V_{DD1}$  and  $V_{DD2}$  SMA connectors can be populated to connect the coaxial cable. Each through-hole pair provides a power and ground with the power on the Pin 1 hole. The pin spacing of each through-hole connector is 200 mil between centers. This matches the pin spacing required for Tektronix active scope probes. If a scope probe connection is desired, the header shown in Figure 2 can be soldered into the through-hole positions, and the signal pin can be trimmed to match the height requirements of a Tektronix active scope probe.

### POWER INPUT

Each side of the [EVAL-ADuM3150Z](#) SPIsulator isolator requires an off-board power source. Each power source must be independent if common-mode voltages are to be applied across the isolation barrier. Sharing a single supply for both sides of the part across the isolation barrier does not harm the isolator, and it is useful for functional testing of the [ADuM3150](#) SPIsulator isolator when common-mode voltages are not present.

A ground plane and a power plane are present on Layer 2 and Layer 3 of the PCB on each side of the isolation barrier. Power connects to the  $V_{DD1}$  and  $GND_1$  planes for Side 1 and connects to the  $V_{DD2}$  and  $GND_2$  planes for Side 2.

**DATA INPUT/OUTPUT (I/O) STRUCTURES**

Each data channel has a variety of structures to help configure, load, and monitor both the input and output. Figure 3 shows one of the datapaths from an external connection to the device under test (DUT) pin. Each channel has the same or a subset of these connections depending on the particular I/O.

Starting at the external connection, the signal path is

1. Pad layout for a PCB board edge-mounted SMA connector.
2. Two 0805 pads are provided where 100 Ω resistors to ground can be installed. The combined resistance of 50 Ω provides a termination for a standard coaxial cable.
3. A 3-pin 100 mil header is provided, where Pin 1 is connected to ground through a 10 kΩ resistor, and Pin 3 is connected to VDD through a 10 kΩ resistor. Temporary pull-up or pull-down can be implemented with a shorting jumper between Pin 2 and either Pin 1 or Pin 3.
4. A 2-pin 100 mil header provides a signal ground pair that can be used for clip leads or for shorting a channel to ground temporarily.
5. There are groupings of three open through holes, consisting of a signal and two ground connections. These holes can be used for hardwiring signal wires into the PCB, installing a header to accept a Tektronix active probe, or installing a 2-pin header to allow adjacent channels to temporarily be shorted together.

Figure 3 shows four 0603 pad layouts between the signal path and optional connections. Pads with similar functions are arranged in vertical rows and their function is labeled on the PCB.

- LOAD is a connection to load structures located on the reverse side of the board. These structures consist of 100 kΩ resistors to power and ground to pull high-Z outputs to a midrange voltage when not being actively driven. This is useful during debugging because it allows easy identification floating outputs. The header and associated resistors identified in Point 3 are also connected to the signal path by this pad.
- PULL-DOWN is a 0603 pad layout between the signal path and GND<sub>1</sub> or GND<sub>2</sub> can be used for installing a permanent pull-down resistor or load capacitor.
- SMA CONNECT is a 0603 pad layout that allows connection of the datapath to the board edge SMA pad layout and terminations.
- PULL-UP is a 0603 pad layout between the signal path and V<sub>DD1</sub> or V<sub>DD2</sub> can be used for installing a permanent pull-up resistor.

Figure 2 shows many of the optional components installed, as well as how jumpers can be used to temporarily connect channels. This figure shows a signal connected to the first channel SMA and then fanned out to the top three channels and monitored by an active scope probe.

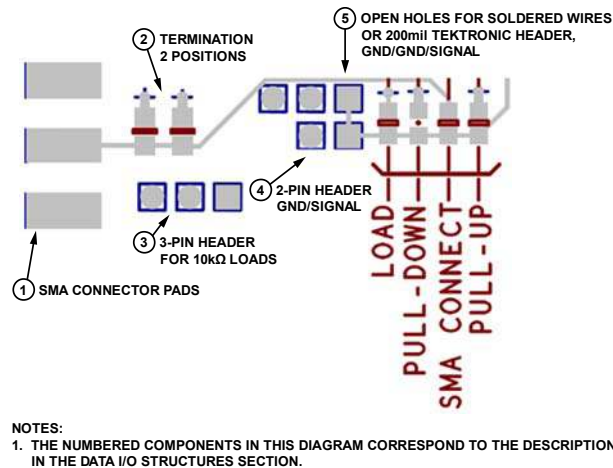


Figure 3. Configuration and Monitoring Structures (Showing a Data path from an External Connection to the DUT Pin)

**BYPASS ON THE PCB**

Several positions and structures are provided to allow optimum bypass of the evaluation board. Provisions are made for optional surface-mount bulk capacitors to be installed near the power connectors to compensate for long cables to the power supply. Parallel bypass capacitors are installed near the [ADuM3150BRSZ](#) and consist of a 0.1  $\mu\text{F}$  capacitor for  $V_{\text{DD1}}$  on the top side and bottom side and a 0.1  $\mu\text{F}$  capacitor for  $V_{\text{DD2}}$  on the top and bottom side of the board. It is best to use the top side bypass positions if possible.

The PCB also implements a distributed capacitive bypass on the PCB. This consists of power and ground planes closely spaced on the inner layers of the PCB. This minimizes noise and the transmission of EMI without using complex design features.

**HIGH VOLTAGE CAPABILITY**

This PCB is designed in adherence with 3750 V basic insulation practices. High voltage testing beyond 3750 V is not recommended. Take appropriate care when using this evaluation board at high voltages, and do not rely on the PCB for safety functions because it has not been high potential tested (also known as hipot tested or dielectric withstanding voltage tested) or certified for safety.

# EVALUATION BOARD SCHEMATICS AND ARTWORK

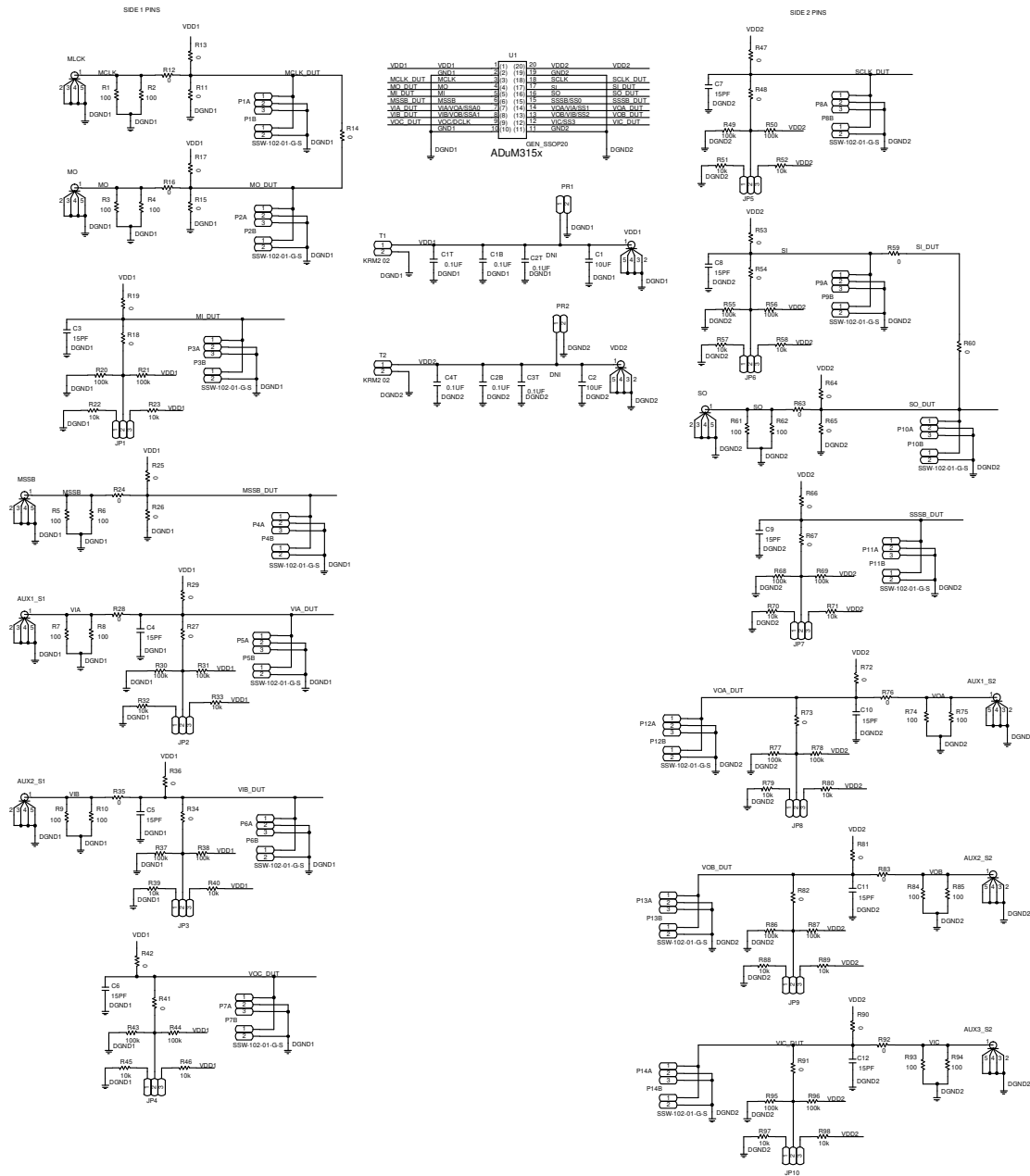


Figure 4. EVAL-ADuM3150Z Schematic

12435-004

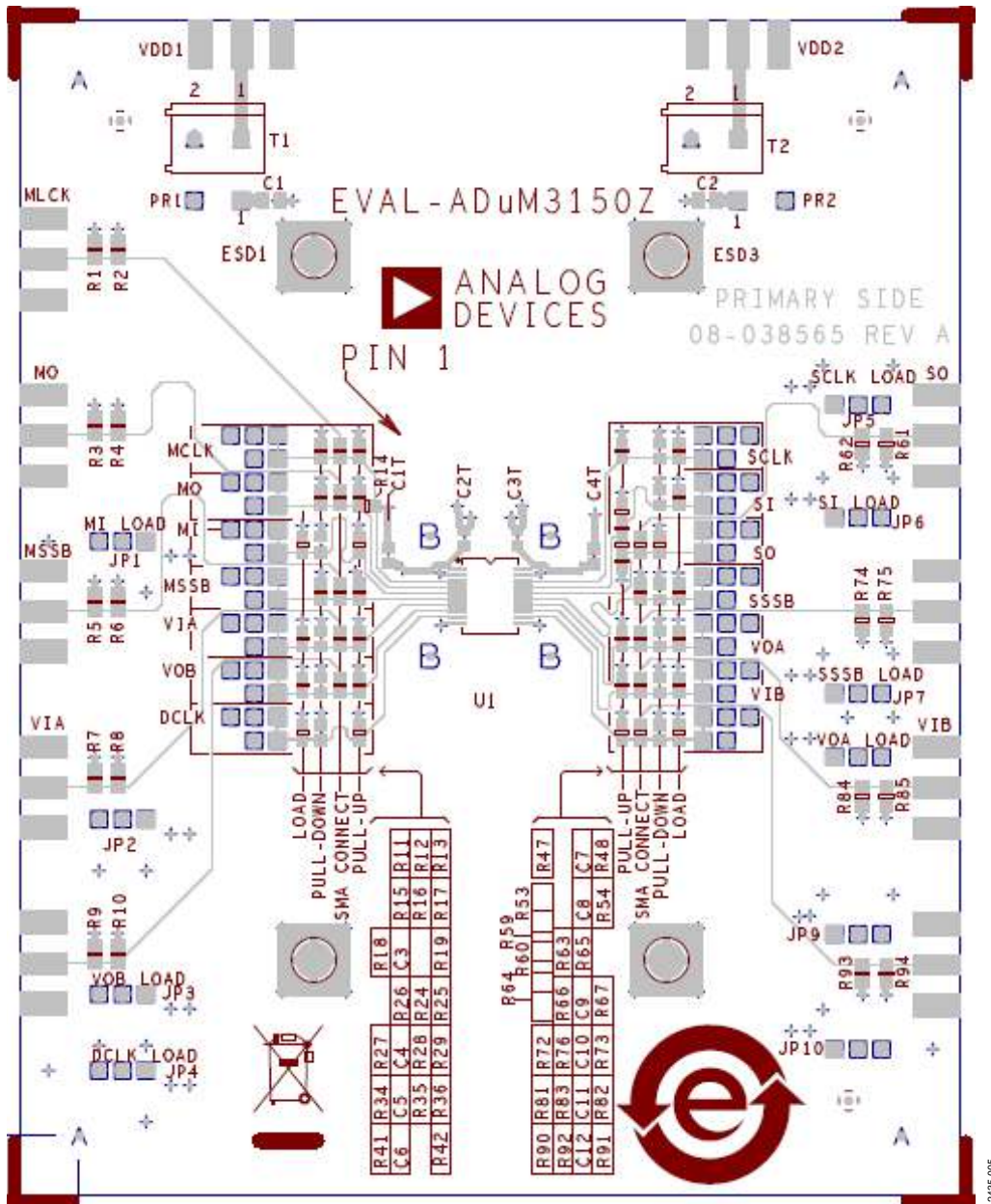


Figure 5. Top Side Layout

12495-005



## ORDERING INFORMATION

### BILL OF MATERIALS

Table 1. Installed Components

Quantity	Reference Designator(s)	Value	Voltage	Tolerance	Package	Manufacturer/Part Number
1	<a href="#">EVAL-ADuM3150Z</a>					Analog Devices, Inc. 08-038567 Rev A
1	U1				SSOP20	Analog Devices <a href="#">ADuM3150BRSZ</a>
2	C1, C2	10 $\mu$ F	6.3 V	10%	0805	Taiyo Yuden JMK212B7106KG-T
2	C2T, C3T	0.1 $\mu$ F	16 V	5%	0603	Kemet C0603C104J4RACTU
10	JP1 to JP10	Jumper (3-pin)			1 $\times$ 3 pin header	Harwin M20-9990345
14	P1B to P14B	Jumper (2-pin)			IDC 2 $\times$ 1 IDC2 $\times$ 1	FCI 90726-402HLF
20	R20, R21, R30, R31, R37, R38, R43, R44, R49, R50, R55, R56, R68, R69, R77, R78, R86, R87, R95, R96	100 k $\Omega$	1/10 W	1	R0603	Stackpole RMCF0603FT100K
20	R22, R23, R32, R33, R39, R40, R45, R46, R51, R52, R57, R58, R70, R71, R79, R80, R88, R89, R97, R98	10 k $\Omega$		1%	0603	Panasonic ERJ-3EKF1002V
2	T1, T2	5.08 mm, 2 $\times$ 1 screw terminal block				DIG01 ED2609-ND

Table 2. Optional Components—Not Installed

Quantity	Reference Designator(s)	Value	Voltage	Tolerance	Package	Manufacturer/Part Number
4	C1B, C1T, C2B, C4T	0.1 $\mu$ F	16 V	5%	0603	Kemet C0603C104J4RACTU
16	P1A to P14A, PR1, PR2	Jumper (2-pin)			1 $\times$ 2 pin header 200 mil	Samtec MTSW-202-12-G-S-730 ZZZ
10	C3 to C12	15 pF	50 V	5%	0603	Kemet 15PF 50V 5% 0603 NPO ZZZ
11	MO, SO, MLCK, MSSB, VDD1, VDD2, AUX1_S1, AUX1_S2, AUX2_S1, AUX2_S2, AUX3_S2	SMA connector			CONN- PCB coax SMA end launch	Johnson 142-0701-851
18	R1 to R10, R61, R62, R74, R75, R84, R85, R93, R94	100 $\Omega$	1/10 W	1	R0805	Panasonic ERJ-6ENF1000V
40	R11 to R19, R24 to R29, R34 to R36, R41, R42, R47, R48, R53, R54, R59, R60, R63 to R67, R72, R73, R76, R81 to R83, R90 to R92	0 $\Omega$	1/10 W	1	R0603	Panasonic ERJ-3GEY0R00V

### RELATED LINKS

Resource	Description
<a href="#">ADuM3150</a>	Product Page, 3.75 kV, 6-Channel, SPIsolator Digital Isolator for SPI with Delay Clock
<a href="#">AN-1109</a>	Application Note, Recommendations for Control of Radiated Emissions with iCoupler Devices

## NOTES

**ESD Caution**

**ESD (electrostatic discharge) sensitive device.** Charged devices and circuit boards can discharge without detection. Although this product features patented or proprietary protection circuitry, damage may occur on devices subjected to high energy ESD. Therefore, proper ESD precautions should be taken to avoid performance degradation or loss of functionality.

**Legal Terms and Conditions**

By using the evaluation board discussed herein (together with any tools, components documentation or support materials, the "Evaluation Board"), you are agreeing to be bound by the terms and conditions set forth below ("Agreement") unless you have purchased the Evaluation Board, in which case the Analog Devices Standard Terms and Conditions of Sale shall govern. Do not use the Evaluation Board until you have read and agreed to the Agreement. Your use of the Evaluation Board shall signify your acceptance of the Agreement. This Agreement is made by and between you ("Customer") and Analog Devices, Inc. ("ADI"), with its principal place of business at One Technology Way, Norwood, MA 02062, USA. Subject to the terms and conditions of the Agreement, ADI hereby grants to Customer a free, limited, personal, temporary, non-exclusive, non-sublicensable, non-transferable license to use the Evaluation Board FOR EVALUATION PURPOSES ONLY. Customer understands and agrees that the Evaluation Board is provided for the sole and exclusive purpose referenced above, and agrees not to use the Evaluation Board for any other purpose. Furthermore, the license granted is expressly made subject to the following additional limitations: Customer shall not (i) rent, lease, display, sell, transfer, assign, sublicense, or distribute the Evaluation Board; and (ii) permit any Third Party to access the Evaluation Board. As used herein, the term "Third Party" includes any entity other than ADI, Customer, their employees, affiliates and in-house consultants. The Evaluation Board is NOT sold to Customer; all rights not expressly granted herein, including ownership of the Evaluation Board, are reserved by ADI. CONFIDENTIALITY. This Agreement and the Evaluation Board shall all be considered the confidential and proprietary information of ADI. Customer may not disclose or transfer any portion of the Evaluation Board to any other party for any reason. Upon discontinuation of use of the Evaluation Board or termination of this Agreement, Customer agrees to promptly return the Evaluation Board to ADI. ADDITIONAL RESTRICTIONS. Customer may not disassemble, decompile or reverse engineer chips on the Evaluation Board. Customer shall inform ADI of any occurred damages or any modifications or alterations it makes to the Evaluation Board, including but not limited to soldering or any other activity that affects the material content of the Evaluation Board. Modifications to the Evaluation Board must comply with applicable law, including but not limited to the RoHS Directive. TERMINATION. ADI may terminate this Agreement at any time upon giving written notice to Customer. Customer agrees to return to ADI the Evaluation Board at that time. LIMITATION OF LIABILITY. THE EVALUATION BOARD PROVIDED HEREUNDER IS PROVIDED "AS IS" AND ADI MAKES NO WARRANTIES OR REPRESENTATIONS OF ANY KIND WITH RESPECT TO IT. ADI SPECIFICALLY DISCLAIMS ANY REPRESENTATIONS, ENDORSEMENTS, GUARANTEES, OR WARRANTIES, EXPRESS OR IMPLIED, RELATED TO THE EVALUATION BOARD INCLUDING, BUT NOT LIMITED TO, THE IMPLIED WARRANTY OF MERCHANTABILITY, TITLE, FITNESS FOR A PARTICULAR PURPOSE OR NON-INFRINGEMENT OF INTELLECTUAL PROPERTY RIGHTS. IN NO EVENT WILL ADI AND ITS LICENSORS BE LIABLE FOR ANY INCIDENTAL, SPECIAL, INDIRECT, OR CONSEQUENTIAL DAMAGES RESULTING FROM CUSTOMER'S POSSESSION OR USE OF THE EVALUATION BOARD, INCLUDING BUT NOT LIMITED TO LOST PROFITS, DELAY COSTS, LABOR COSTS OR LOSS OF GOODWILL. ADI'S TOTAL LIABILITY FROM ANY AND ALL CAUSES SHALL BE LIMITED TO THE AMOUNT OF ONE HUNDRED US DOLLARS (\$100.00). EXPORT. Customer agrees that it will not directly or indirectly export the Evaluation Board to another country, and that it will comply with all applicable United States federal laws and regulations relating to exports. GOVERNING LAW. This Agreement shall be governed by and construed in accordance with the substantive laws of the Commonwealth of Massachusetts (excluding conflict of law rules). Any legal action regarding this Agreement will be heard in the state or federal courts having jurisdiction in Suffolk County, Massachusetts, and Customer hereby submits to the personal jurisdiction and venue of such courts. The United Nations Convention on Contracts for the International Sale of Goods shall not apply to this Agreement and is expressly disclaimed.