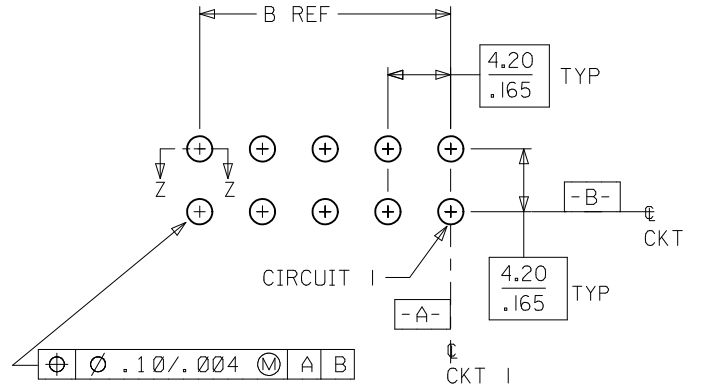


MEASURING POINT FOR SELECT TIN AND TIN-LEAD



PCB LAYOUT: COMPONENT SIDE
RECOMMENDED MINIMUM PCB THICKNESS: $\frac{2.24}{.088}$

CKT	A	B
4	18.81 .740	4.20 .165
6	23.01 .906	8.40 .331
8	27.21 1.071	12.60 .496
10	31.41 1.237	16.80 .661
12	35.61 1.402	21.00 .827
14	39.81 1.567	25.20 .992
16	44.01 1.733	29.40 1.157
18	48.21 1.898	33.60 1.323
20	52.41 2.063	37.80 1.488
22	56.61 2.229	42.00 1.654
24	60.81 2.394	46.20 1.819

NOTES:

- MATERIAL:
HOUSING: NYLON, GLASS FILLED, UL94V-0, COLOR: BLACK
TERMINAL: PHOSPHOR BRONZE
- FINISH: SEE SHEET 2
- PRODUCT SPECIFICATION: PS-43879-001
- PACKAGING: PK-43879-001
- THIS PART MATES WITH RECEPTACLE NUMBERS 5557 AND 42474
- THIS PART MATES WITH HEADER NUMBER 42385
- PART ALLOWS FOR 1.27/.050 MAX. MIS-ALIGNMENT WITH MATING HOUSING IN ANY DIRECTION
- DRILLED HOLE DIAMETER IS EQUIVALENT TO 5/64 INCH STANDARD DRILL BIT
- CONNECTOR ASSEMBLIES ARE NOT DESIGNED TO BE MATED AND UNMATED WHILE CIRCUITS ARE LIVE
- PART IS NOT DESIGNED FOR CURRENT SHARING
- PART CONFORMS TO CLASS "B" REQUIREMENTS OF COSMETIC SPECIFICATION PS-45499-002
- THIS HEADER REQUIRES A MOLEX INSERTION TOOL (62200-9400) TO PROPERLY INSTALL IT TO THE PCB.

ADDED NOTE 12 EC NO: UCP2010-2444 DRWN: J JAGUILAR 2010/03/26 CHKD: JBELL 1998/04/08 APPR: F SMITH 2010/04/14	QUALITY SYMBOLS ▽=0 ▽=0	GENERAL TOLERANCES (UNLESS SPECIFIED)		DIMENSION STYLE MM/IN		SCALE 2:1	DESIGN UNITS METRIC	THIRD ANGLE PROJECTION	
		mm	INCH	DRAWN BY MANLAPAZ	DATE 1998/04/08	TITLE MINI-FIT JR BMI/CPI HEADER ASSEMBLY	MOLEX INCORPORATED		
L2	DESCRIPTION	4 PLACES	± ---	± ---	CHECKED BY BANDURA	DATE 1998/04/08	DOCUMENT NO. SD-43879-021		SHEET NO. 1 OF 2
		3 PLACES	± ---	± .010	APPROVED BY EDGLEY	DATE 1998/04/08			
		2 PLACES	± 0.25	± .014	MATERIAL NO.				
		1 PLACE	± 0.35	± ---	DRAFT WHERE APPLICABLE MUST REMAIN WITHIN DIMENSIONS				
		ANGULAR ±1/2°		SEE SHEET 2					
THIS DRAWING CONTAINS INFORMATION THAT IS PROPRIETARY TO MOLEX INCORPORATED AND SHOULD NOT BE USED WITHOUT WRITTEN PERMISSION									

FINISH: 1
TIN OVER NICKEL

CKTS	MATERIAL NO.
04	43879-0022
06	43879-0023
08	NOT TOOLED
10	43879-0025
12	NOT TOOLED
14	43879-0027
16	NOT TOOLED
18	43879-0029
20	NOT TOOLED
22	NOT TOOLED
24	43879-0032

FINISH: 2
GOLD & TIN/LEAD OVER NICKEL

CKTS	MATERIAL NO.
04	43879-0033
06	43879-0034
08	NOT TOOLED
10	43879-0036
12	NOT TOOLED
14	43879-0038
16	NOT TOOLED
18	43879-0040
20	NOT TOOLED
22	NOT TOOLED
24	43879-0043

FINISH: 3
MATTE TIN/LEAD OVER NICKEL

CKTS	MATERIAL NO.
04	OBSOLETE
06	43879-0045
08	NOT TOOLED
10	OBSOLETE
12	NOT TOOLED
14	OBSOLETE
16	NOT TOOLED
18	OBSOLETE
20	NOT TOOLED
22	NOT TOOLED
24	OBSOLETE

FINISH: 4
GOLD & TIN OVER NICKEL

CKTS	MATERIAL NO.
04	43879-0055
06	43879-0056
08	NOT TOOLED
10	43879-0058
12	NOT TOOLED
14	43879-0060
16	NOT TOOLED
18	43879-0062
20	NOT TOOLED
22	NOT TOOLED
24	43879-0065

FINISH:

1 - 0.00254/.000100 MIN. BRIGHT TIN OVER 0.00127/.000050 MIN. NICKEL OVERALL.

2 - 0.00076/.000030 MIN. GOLD IN CONTACT AREA, 0.00254/.000100 MIN. 90/10 MATTE TIN/LEAD IN TAIL AREA, OVER 0.00127/.000050 MIN. NICKEL OVERALL.

3 - 0.00254/.000100 MIN. 90/10 MATTE TIN/LEAD OVER 0.00127/.000050 MIN. NICKEL OVERALL.

4 - 0.00076/.000030 MIN. GOLD IN CONTACT AREA, 0.00254/.000100 MIN. MATTE TIN IN TAIL AREA, OVER 0.00127/.000050 MIN. NICKEL OVERALL.

SEE SHEET ONE EC NO: UCP2010-1250 DRWN: JJAGUILAR 2009/12/01 CHKD: JBELL 2009/12/01 APPR: FSMITH 2009/12/01	DESCRIPTION REV	QUALITY SYMBOLS ▽=0 ▽7=0	GENERAL TOLERANCES (UNLESS SPECIFIED)		DIMENSION STYLE MM/IN		SCALE ---	DESIGN UNITS METRIC	THIRD ANGLE PROJECTION		
				DRAWN BY MANLAPAZ	DATE 1998/04/08	TITLE MINI-FIT JR BMI/CPI HEADER ASSEMBLY					
				CHECKED BY BANDURA	DATE 1998/04/08	Molex MOLEX INCORPORATED					
				APPROVED BY EDGLEY	DATE 1998/04/08	MATERIAL NO. SEE CHART		DOCUMENT NO. SD-43879-021	SHEET NO. 2 OF 2		
DRAFT WHERE APPLICABLE MUST REMAIN WITHIN DIMENSIONS			THIS DRAWING CONTAINS INFORMATION THAT IS PROPRIETARY TO MOLEX INCORPORATED AND SHOULD NOT BE USED WITHOUT WRITTEN PERMISSION								