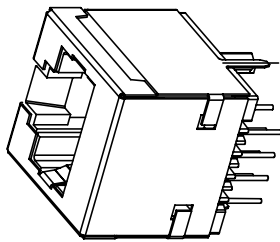
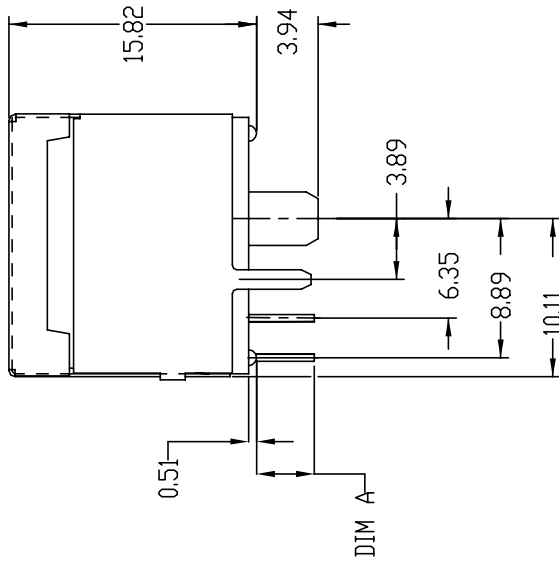
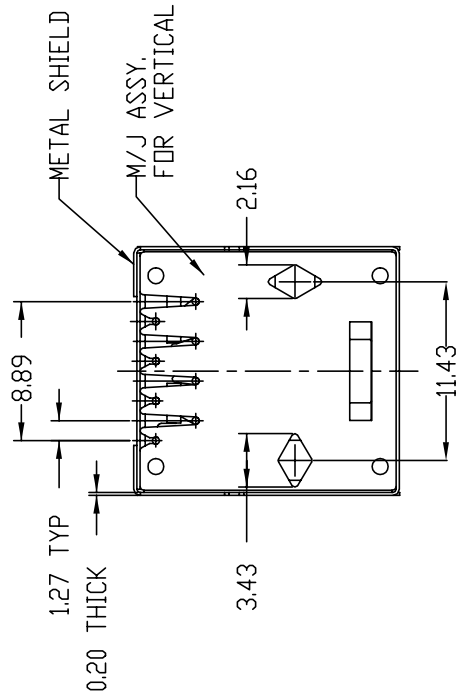
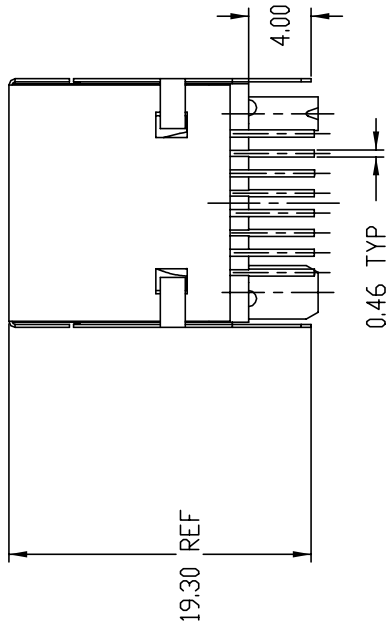
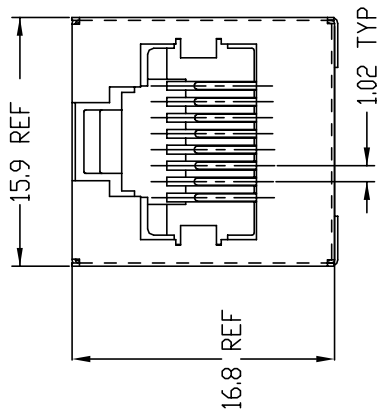


SCALE 2:1  
WITH PANEL STOPS

P/N	WIRE NUMBERS LOADED	PLATING	DIM A
91133-088	ALL	5u" Au + high performance lubricant	3.70±0.50mm
91133-088LF	ALL	5u" Au + high performance lubricant	3.70±0.50mm
91133-188LF	ALL	5u" Au + high performance lubricant	4.50±0.50mm

mat'l. code	surface	tolerance	projection	product family
ISD1302	ISD1001	ISD406	MOD JACK	
l'trecn n'dr	date	tolerances unless otherw'se specified	mm	title
A 150092	CL 04/03/95	0.X±0.3	mm	8 POS VERT PCB M/J ASSY,
B 150378	CL 12/18/95	0.XX±0.15	mm	DIAMOND PEG, SHIELDED
C T03-0443	WL 10/06/03	0.XXX±0.05	scale 2.0	
D N05-0019	YS 01/27/05	C L FENG	03/02/95	awg no sheet 1 of 3 size
E ELX-N-010982	SH MM 03/14/12	enGR TONY CHIEN	03/02/95	
F ELX-N-13788	Henry 01/10/13	SH MIMO	03/21/12	
G ELX-N-14055	Henry 02/18/13	rick BIAN	03/21/12	
Sheet	revisio'n	G G		
index	Sheet	1 2 3		
P/N				
91133-088				
91133-088LF				





SCALE 2:1  
W/O PANEL STOPS

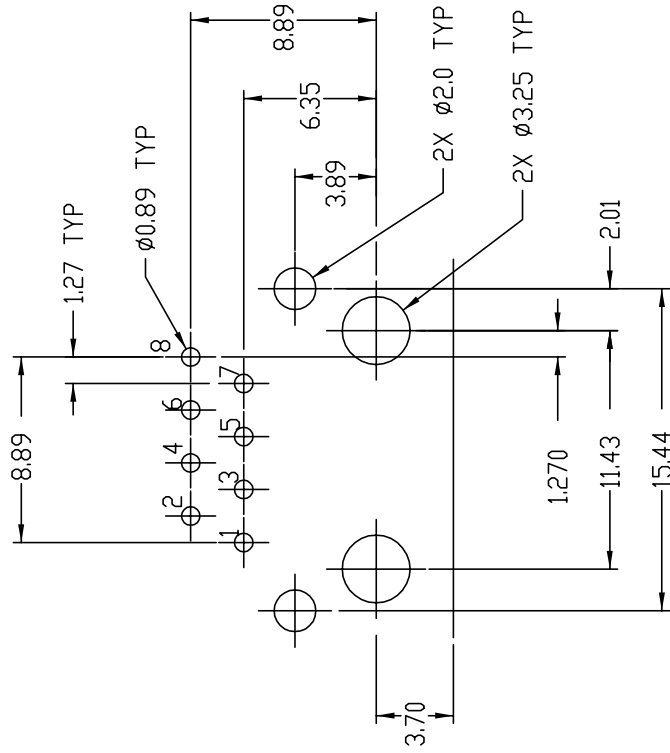
mat'l. code	surface	tolerance	projection	product family
ISQI302	ISO1101	ISO1406	ISO1101	MOD JACK
trlec n dnr	date	tolerances unless otherw	spec	title
A	150092	CL	04/03/95	0.X±0.3
B	150378	CL	12/18/95	0.XX±0.15
C	T03-0443	WL	10/06/03	0.XXX±0.05
D	N05-0019	YS	01/27/05	CL FENG
E	ELX-N-1378	SH	03/14/12	enGR TONY CHIEN
F	ELX-N-1405	SH	01/10/13	enGR SH MIAO
G	ELX-N-1405	SH	02/18/13	enGR RICK BIAN
Sheet index	revision	G		
P/N	Sheet 1	2		
91133-188LF				

8 POS VERT PCB M/J ASSY, DIAMOND PEG, SHIELDED	awg no	sheet 2 of 3	size
	91133		A4
type	Product	Customer	Drawing



NOTES:

1. RECOMMENDED P.C.B THICKNESS 1.60mm ;
2. HOUSING MATERIAL: NYLON 66, 25% G.F UL 94V-0, BLACK.
3. CONTACTS: PHOS BRONZE ALLOY UNS-C51000, Ø 0.460 ROUND WIRE, PLATING SEE TABLE.
4. METAL SHELL MATERIAL: COPPER ALLOY 0.20mm THICK  
FINISH:  
FOR -XXX: TIN-LEAD 100µ" THICK MIN.  
FOR -XXXLF: PURE BRIGHT TIN 80µ" THICK MIN.
5. PACKAGING : GS-14-351, USE TRAY
6. ALL DIMENSIONS IN MILLIMETER.
7. IF LF P/N THE PRODUCT MEETS EUROPEAN UNION DIRECTIVES AND OTHER COUNTRY REGULATIONS AS DESCRIBED IN GS-22-008.
8. THE HOUSING WILL WITHSTAND EXPOSURE TO 260°C PEAK TEMPERATURE FOR 10 SECONDS IN A WAVE SOLDER APPLICATION WITH A 1.60mm MINIMUM THICK CIRCUIT BOARD.
9. IF LF P/N PACKAGING MEETS GS-14-920 SPECIFICATION.



RECOMMENDED PC BOARD LAYOUT  
SCALE 4:1

mat'l. code	surface	tolerance	projection	product family
ISQ1302	ISQ1001	ISQ1406	MOD JACK	
tr/electn nqdr	date	tolerances unless otherwise specified	mm	title
A	04/03/95	0.XX±0.3	scale 2.0	8 POS VERT PCB M/J ASSY, DIAMOND PEG, SHIELDED
B	12/18/95	0.XX±0.15		
C	10/06/03	0.XXX±0.05		
D	01/27/05	C L FENG		awg no sheet of 3 size
E	03/14/12	enGR TONY CHIEN		91133 A4
F	01/10/13	enGR SH MIAO		type Product Customer Drawing
G	02/18/13	enGR RICK BIAN		
sheet index	revision			
	Sheet			