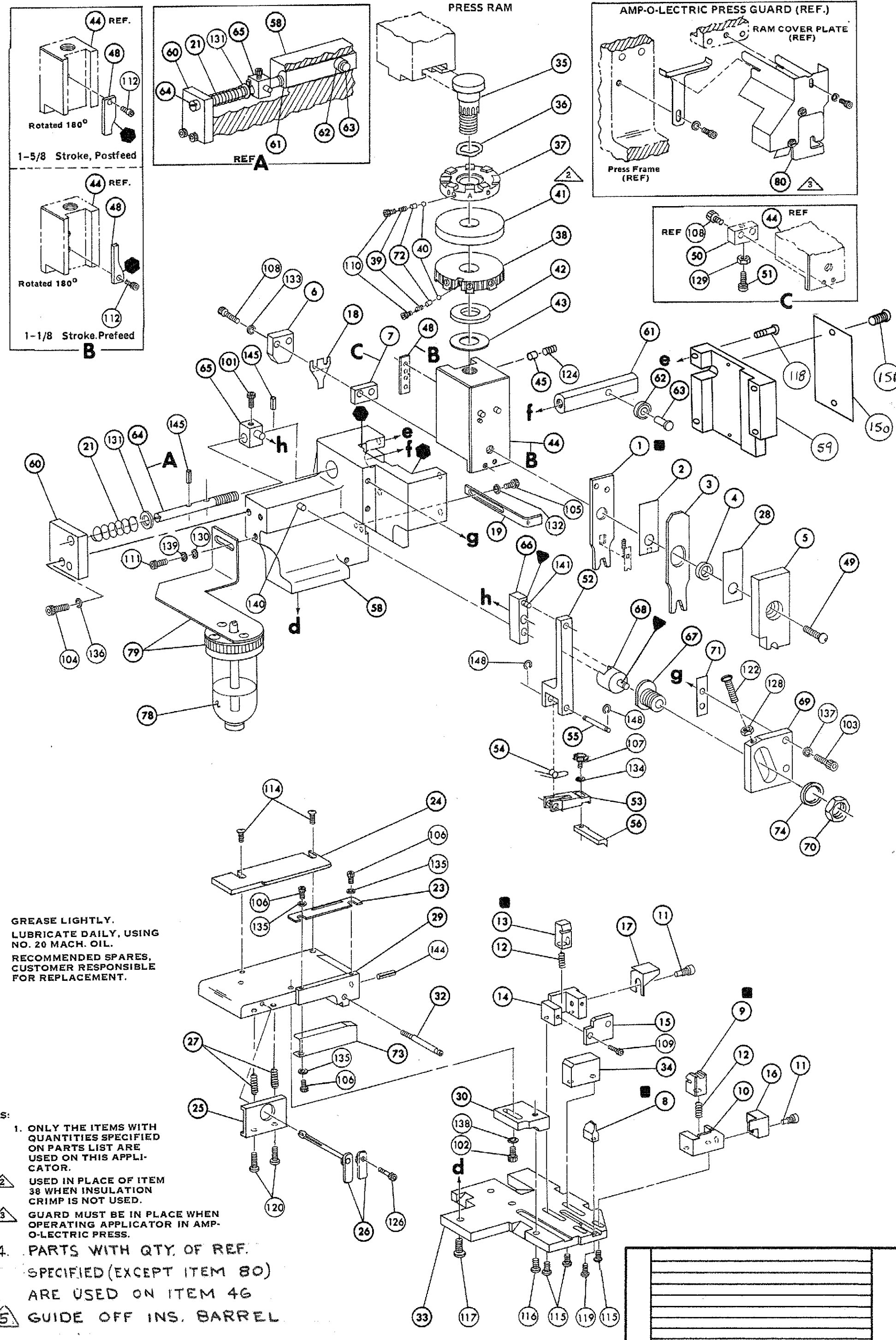


THIS IS A CONTROLLED DOCUMENT.



KEY:
 ● GREASE LIGHTLY.
 ▽ LUBRICATE DAILY, USING NO. 20 MACH. OIL.
 ■ RECOMMENDED SPARES, CUSTOMER RESPONSIBLE FOR REPLACEMENT.

NOTES:
 1. ONLY THE ITEMS WITH QUANTITIES SPECIFIED ON PARTS LIST ARE USED ON THIS APPLICATOR.
 2. USED IN PLACE OF ITEM 38 WHEN INSULATION CRIMP IS NOT USED.
 3. GUARD MUST BE IN PLACE WHEN OPERATING APPLICATOR IN AMP-O-LECTRIC PRESS.
 4. PARTS WITH QTY. OF REF. SPECIFIED (EXCEPT ITEM 80) ARE USED ON ITEM 46
 5. GUIDE OFF INS. BARREL

REQ.	PART NO.	DESCRIPTION	NO.	REQ.	PART NO.	DESCRIPTION	NO.
			162	REF	690517-1	SPACER	71
			161	REF	22594-8	NUT, HEX	70
			160	REF	240628-1	PLATE, ADJUSTMENT	69
			159	REF	240626-1	SHAFT, PIVOT	68
			158	REF	240633-1	BUSHING	67
			157	REF	455680-1	LEVER, INTERMEDIATE	66
			156	REF	240629-1	BLOCK, PIVOT	65
			155	REF	240632-2	SCREW, ADJUSTMENT, FEED ROD	64
			154	REF	240659-3	PIN, CAM ROLLER	63
			153	REF	240658-1	ROLLER, CAM	62
			152	REF	454398-2	ROD, FEED	61
			151	REF	454178-1	GUIDE, FEED ROD	60
			150	REF	454220-1	CAP, HOUSING	59
			149	REF	454485-1	HOUSING	58
			148				57
			147	1	690542-2	PAWL, FEED	56
			146	REF	240624-1	PIN, FEED FINGER	55
			145	REF	691499-1	SPRING, FEED FINGER	54
			144	REF	690541-1	FINGER, FEED	53
			143	REF	455679-1	LEVER, TERMINAL FEED ARM	52
			142	1	811242-2	BUMPER, HOLDDOWN	51
			141	1	690753-1	SPACER, TONKER	50
			140	1	7-21002-9	BOLT, CRIMPER	49
			139	1	690501-4	CAM POST-FEED STROKE 1 5/8	48
			138				47
			137	1	459456-1	APPL. BASIC SUB-ASSY	46
			136	1	690191-1	PLUG, NYLON	45
			135	1	455673-1	RAM	44
			134	1	690125-1	WASHER, LAMINATED	43
			133	1	690124-1	WASHER, RAM	42
			132			DISC, SPACER	41
			131	2	23241-6	BALL, STEEL	40
			130	2	690170-1	SPRING, COMPRESSION	39
			129	1	690142-1	DISC, INSULATION	38
			128	1	7-69041-8	DISC, WIRE	37
			127	1	22480-5	WASHER, SPRING	36
			126	1	690212-1	POST, RAM	35
			125	1	1-690786-1	SUPPORT, TERMINAL	34
			124	REF	455675-1	PLATE, BASE	33
			123	1	690432-3	SCREW, ADJUSTMENT	32
			122				31
			121	REF	455689-1	BLOCK, STRIP GUIDE ADJ	30
			120	1	455814-3	PLATE, STRIP GUIDE	29
			119	1	1-455888-0	SPACER, F. SHEAR DEPRESSOR	28
			118	2	1-22284-0	SPRING, DRAG	27
			117	1	240793-1	LEVER, DRAG RELEASE	26
			116	1	240792-1	DRAG, STOCK	25
			115	1	690504-8	GUIDE, STRIP REAR	24
			114	1	690438-1	GUIDE, STRIP FRONT	23
			113				22
			112	REF	4-22284-9	SPRING, FEED RETURN	21
			111				20
			110	1	690472-2	STRIPPER	19
			109			HOLDER, TERMINAL	18
			108			GUARD, CHIP REAR	17
			107	1	691667-1	GUARD, CHIP FRONT	16
			106			PLATE, SHEAR REAR	15
			105			HOLDER, SHEAR REAR	14
			104			SHEAR, FLOAT REAR	13
			103	1	5-22280-0	SPRING, SHEAR	12
			102	1	690461-1	STOP, SHEAR	11
			101	1	690459-1	HOLDER, SHEAR FRONT	10
			80	1	454276-1	SHEAR, FLOAT FRONT	9
			79	1	5-690512-3	ANVIL	8
			78			SPACER, DEPRESSOR REAR	7
			77			DEPRESSOR, SHEAR REAR	6
			76	1	455889-9	DEPRESSOR, SHEAR FRONT	5
			75	1	1-238011-0	SPACER, TUBULAR, INS CRIMPER	4
			74	1	456134-3	CRIMPER, INSULATION	3
			73	1	455888-3	SPACER, CRIMPER	2
			72	1	456406-7	CRIMPER, WIRE	1

TERM APPL SPEC 114-2082

REV	DATE	DESCRIPTION
E	0150-1041-04	WIRE ON
D	0150-0779-03	WIRE
C	0150-0581-96	18 1/2
B	0150-0470-95	18 10/32
A	1760388	NR 66 11-88
02	REV ITEM 37 PER	12 3173 8-79
01	REV PER ECM	2 509 5-28-79

CRIMPING DATA				THIS APPLICATOR WILL APPLY
PAD LETTER	CRIMP HEIGHT	WIRE SIZE	WIRE STRIP LENGTH	62139
A	.061	16		
B	.053	18		
C	.049	20		
D	NOT USED			
CRIMP WIRE	SIZE .090	TYPE F	FEED .535	USED ON MACH NO.
INSULATION	.140	F		
INSULATION RANGE	0.060-110	WIRE RANGE 20-16	APPLICATOR INSTRUCTION	8040
REMARKS AMPOMATOR (FEED SIDE ONLY)				
SET UP PAGE 458637-1	LAYOUT NO. 674	AMP INCORPORATED HARRISBURG, PENNA.		
DRAWN R. BENNETT	APPROVED Ken Bennett	LOC A	NO. C 687966-1	REV. E
APPLICATOR MINIATURE QUICK CHANGE				
HD SIDE-FEED (.187 SERIES PIGGY-BACK FASTON)				