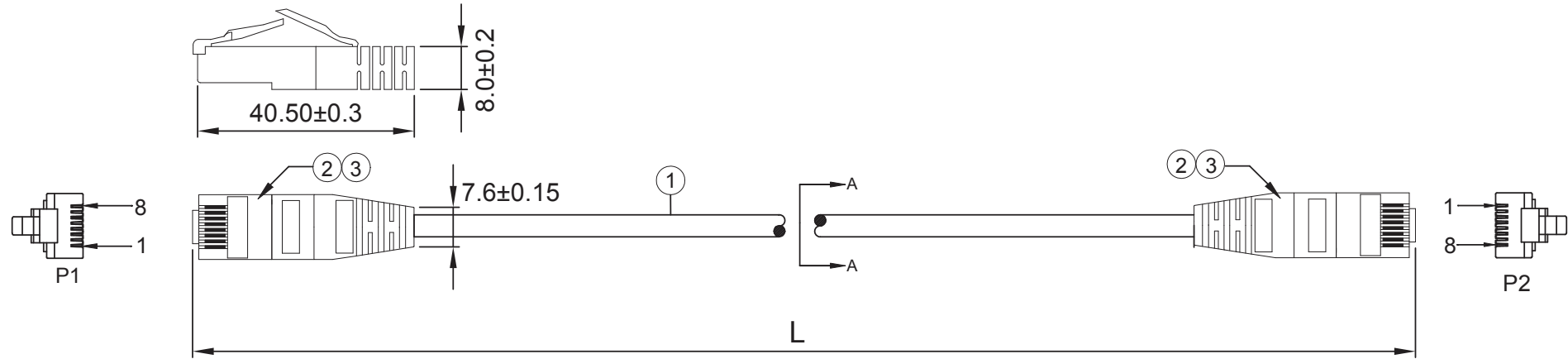
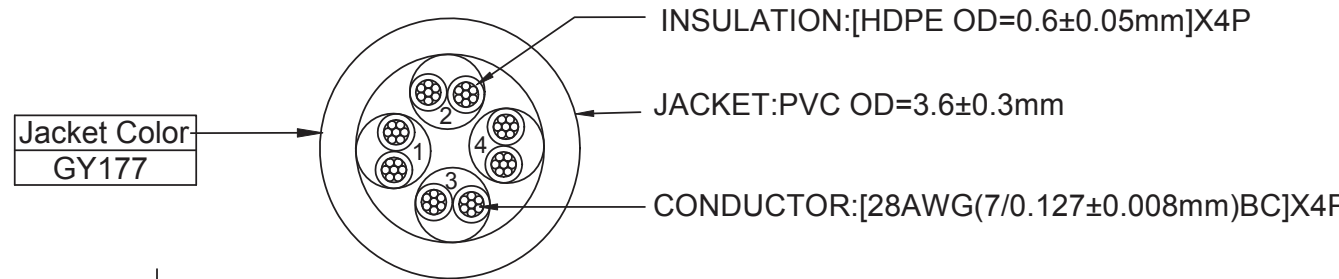


NOTE: ALL MATERIAL COMPLIANT ROHS STANDARD



INK MARKING <BY0021>: CAT.6 U/UTP 28AWGX4P PATCH CONFORM TO ANSI/TIA-568.2-D & ISO/IEC 11801



Operation Temperature: -20°C ~ +60°C

orange 1 white/orange	green 2 white/green
blue 3 white/blue	brown 4 white/brown

SEC:A-A

L(ft)	T(inch)	T(%)	L(ft)	T(inch)	T(%)
0.5	±0.6	10%	6	±1.2	1.67%
1	±1.2	10%	7	±2	2.38%
1.5	±1.2	6.67%	8	±2	2.08%
2	±1.2	5%	9	±2	1.85%
3	±1.2	3.33%	10	±2	1.67%
4	±1.2	2.5%	12	±2	1.39%
5	±1.2	2%	15	±3.15	1.75%

PINOUT		
P1	WIRE	P2
1	WHITE/ORANGE	1
2	ORANGE	2
3	WHITE/GREEN	3
6	GREEN	6
5	WHITE/BLUE	5
4	BLUE	4
7	WHITE/BROWN	7
8	BROWN	8

CABLEMAX

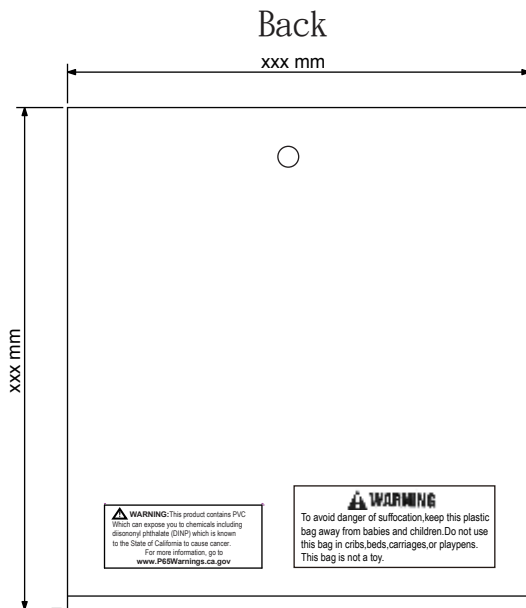
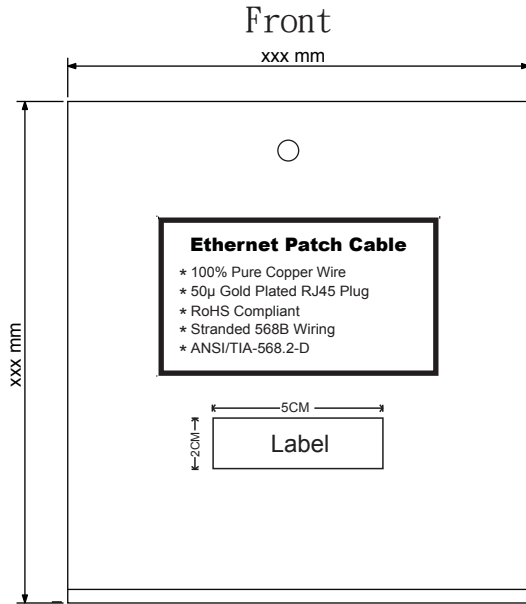
Drawn By:	Date: 10 / 26 / 2022	Description: Cat.6 UTP Slim Cables 28AWG
Checked By:	Sheet 1 of 2	Model No. CM-1001XXXXBSTK
Approved By:	Scale 1:1	Rev. 01 Unit: mm

QTY	SPECIFICATION	ITEM	NO.
③	PVC Transparent	BOOT	2
②	8P8C 50U RJ45	PLUG	2
①	CAT.6 UTP 28AWG*4P PVC GY177	CABLE	A/R

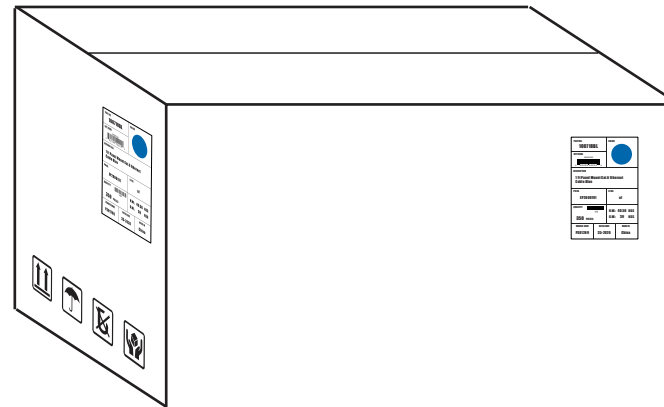
NOTE: CARTON MATERIAL MUST BE A=A

Cable Part No. Color Guide *Replace "XX" in the Part No. to the respective color code (e.x. CM-100180GNBSTK for a Green cable)

White = WT
 Gray = GY
 Black = BK
 Blue = BL
 Green = GN
 Purple = PU
 Yellow = YW
 Orange = OR
 Red = RD



PE BAG SIZE(INCH)	PART NO.:	Length/FT	CARTON SIZE(INCH)	QTY	G.W.(LBS)
6.89x7.48	CM-100180XXBSTK	0.5	15.75x15.75x7.87	550	21.54
6.89x7.48	CM-100181XXBSTK	1	15.75x15.75x7.87	450	20.59
6.89x7.48	CM-100182XXBSTK	1.5	15.75x15.75x9.84	450	23.37
6.89x7.48	CM-100183XXBSTK	2	15.75x15.75x9.84	400	22.84
6.89x7.48	CM-100184XXBSTK	3	15.75x15.75x9.84	350	24.18
6.89x7.48	CM-100185XXBSTK	4	15.75x15.75x9.84	300	24.34
6.89x7.48	CM-100186XXBSTK	5	15.75x15.75x9.84	280	25.93
6.89x7.48	CM-100187XXBSTK	6	15.75x15.75x9.84	220	23.15
6.89x7.48	CM-100188XXBSTK	7	15.75x15.75x9.84	220	25.57
6.89x7.48	CM-100189XXBSTK	8	15.75x15.75x9.84	200	25.66
6.89x7.48	CM-100190XXBSTK	9	15.75x15.75x9.84	180	25.22
6.89x7.48	CM-100191XXBSTK	10	15.75x15.75x9.84	180	27.29



CABLEMAX			
Drawn By:	Date: 10 / 26 / 2022	Description: Cat.6 UTP Slim Cables 28AWG	
Checked By:	Sheet 2 of 2	Model No. CM-1001XXXXBSTK	
Approved By:	Scale 1:1	Rev. 01	Unit: mm