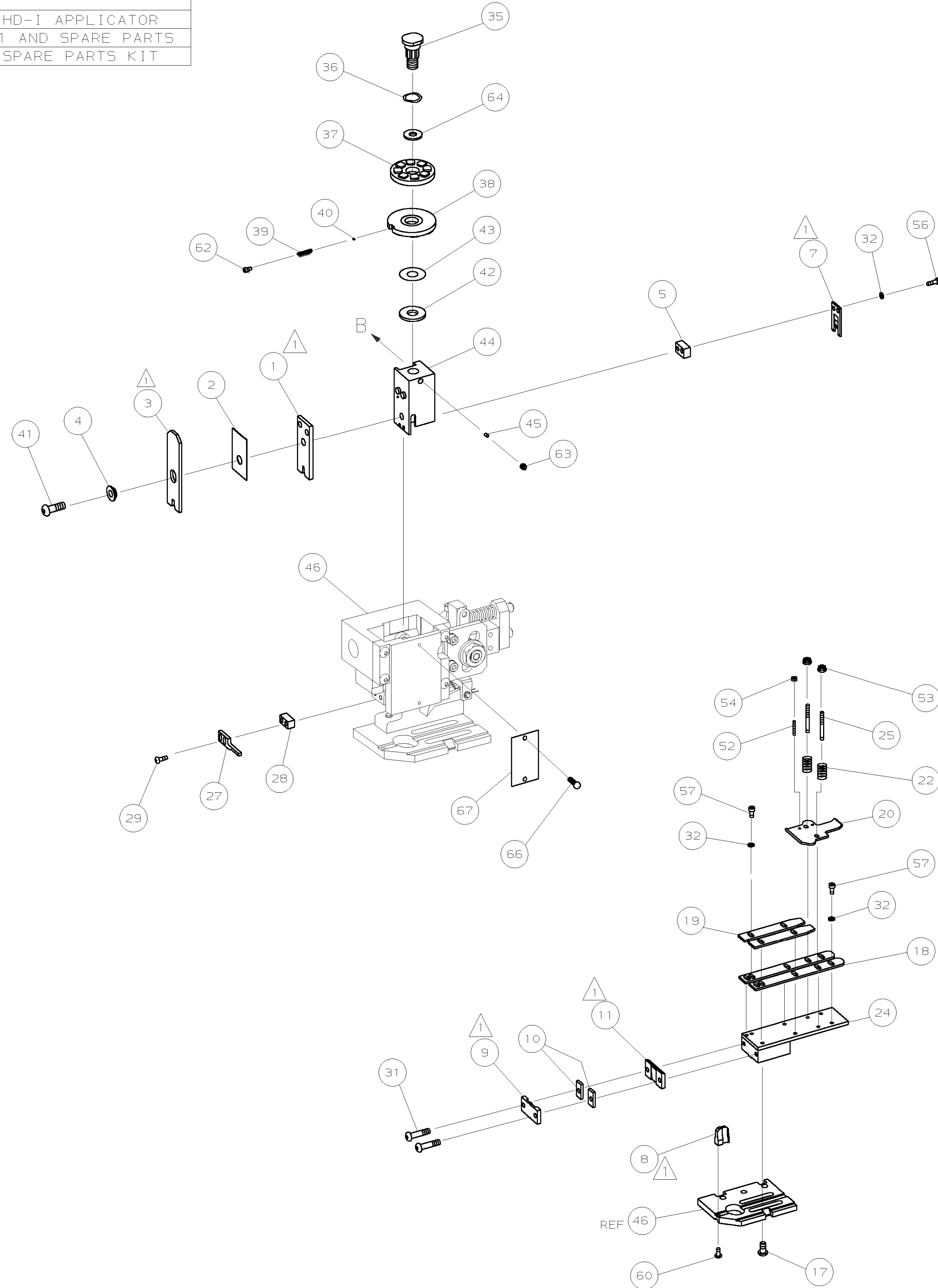
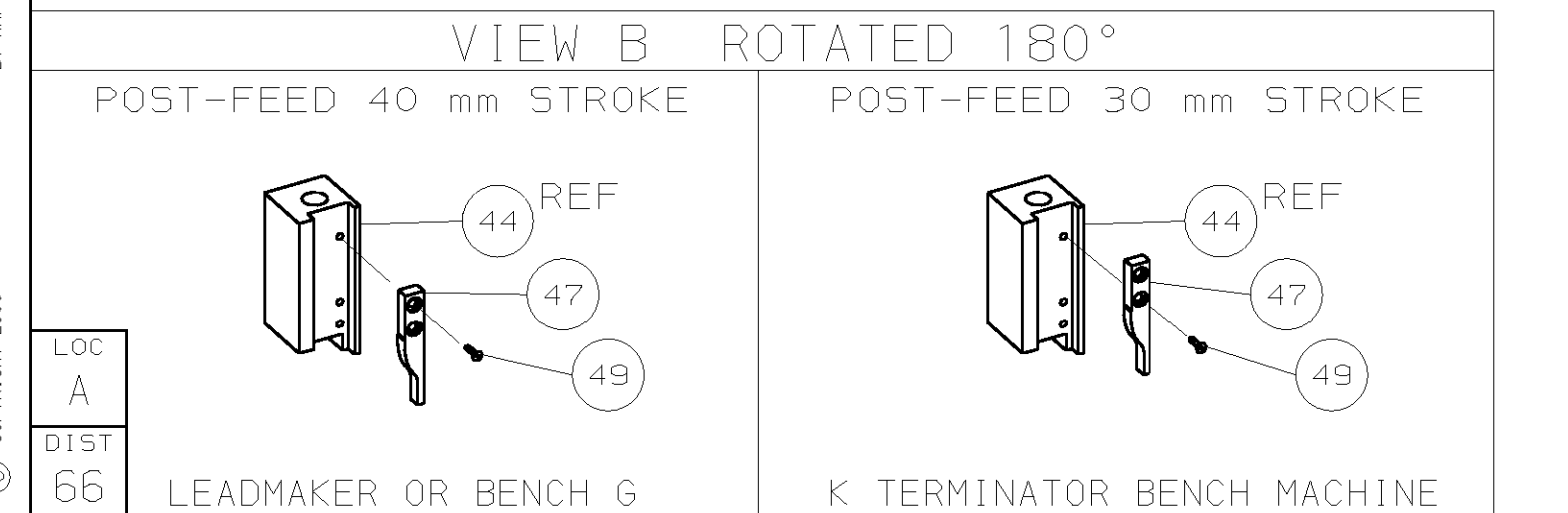


PART NUMBER	REV	FIRST USED	TERMINATOR	FEED TYPE	DESCRIPTION
1339514-1	A		BENCH & LEADMAKER	MECH POST FEED	HD-I APPLICATOR
7-1339514-1	A		BENCH & LEADMAKER	MECH POST FEED	-1 AND SPARE PARTS
7-1339514-7	A		-	-	SPARE PARTS KIT

CRIMP DATA (AMP TERMINAL)			
TERMINAL NAME: RING TONGUE, WITH INSULATION SUPPORT			
CRIMP	SIZE	TYPE	RANGE
WIRE	3.05 [.120 IN]	F	20 - 16 AWG
INSUL	3.94 [.155 IN]	F	2.54-3.43 [.100-.135 IN]
WIRE STRIP LENGTH 3.20 [.126 IN]		APPL INSTRUCTION 408-8323	
TERMINAL	-	-	FEED
APPL SPEC	114-2084	-	12.80 [.504 IN]
TERMINALS APPLIED			
160252	-	-	-
160189	-	-	-
160210	-	-	-
160237	-	-	-
160255	-	-	-
160434	-	-	-
41471	-	-	-
41472	-	-	-
WIRE SIZE	CRIMP HEIGHT	PIN PN & LENGTH [IN]	
mm ² AWG			
16 AWG	1.70 ±0.05 [.067 ±.002 IN]	8-354778-7 [.2930]	
1.00mm ²	1.63 ±0.05 [.064 ±.002 IN]	9-354778-4 [.2965]	
18 AWG	1.57 ±0.05 [.062 ±.002 IN]	9-354778-9 [.2990]	
0.75mm ²	1.56 ±0.05 [.061 ±.002 IN]	354779-2 [.3000]	
20 AWG	1.50 ±0.05 [.059 ±.002 IN]	354779-5 [.3015]	
0.50mm ²	1.49 ±0.05 [.059 ±.002 IN]	354779-5 [.3015]	



- RECOMMENDED SPARE PARTS.
- 2. GREASE RAM, CAM, CAM FOLLOWER AND FEED ROD LIGHTLY.
- 3. LUBRICATE DAILY PER THE APPLICATOR INSTRUCTION SHEET SUPPLIED WITH THE APPLICATOR.
- SPECIAL CRIMP HEIGHT DATA SELECTED TO SUIT A SPECIFIC GERMAN MARKET.



QTY	REV	PART NO	DESCRIPTION	ITEM NO		
-	1	1	1339514	PRINT, APPLICATOR LOG SHEET	73	
-	1	1	1338705-2	DOCUMENTATION PACKAGE	72	
					71	
					70	
					69	
					68	
-	1	1	461264-1	PLATE, IDENTIFICATION	67	
-	2	2	21017-2	SCR, DRIVE (#2X.19) ID PLATE	66	
					65	
-	1	1	986950-1	WASHER, FLAT PRECISION	64	
-	1	1	3-18031-0	SCR, SKT SET (M6X6) RAM	63	
-	1	1	18023-9	SCR, SKT CAP (M4X6) CP D5C	62	
					61	
-	1	1	18024-7	SCR, BHC (M4X10) ANVIL	60	
					59	
					58	
-	6	6	1-18023-0	SCR, SHC (M4X8) STRIP GUIDE	57	
-	2	2	18023-9	SCR, SHC (M4X6) SLUG BLADE	56	
					55	
-	2	2	18029-1	NUT, HEX (M3) DRAG	54	
-	2	2	986965-1	NUT, HEX SL (M4) DRAG STUD	53	
-	2	2	2-18032-2	SCR, SKT SET (M3X10) DRAG	52	
					51	
					50	
-	1	1	18024-3	SCR, BHC (M3X10) CAM	49	
					48	
-	1	1	1338676-1	CAM, POST-FEED 30 & 40 mm ST	47	
-	1	1	1338662-2	APPLICATOR, BASIC (SUBASSY)	46	
-	1	1	690191-1	PLUG, NYLON	45	
-	1	1	1320998-1	RAM	44	
-	1	1	690125-1	WASHER, LAMINATED	43	
-	1	1	690124-1	WASHER, RAM	42	
-	1	1	2-18024-6	SCREW, BHC (M8X25) CRIMPER	41	
-	1	1	23241-1	BALL, STEEL	40	
-	1	1	2-22278-7	SPRING, COMPRESSION	39	
-	1	1	1320922-1	DISC, INSULATION	38	
-	1	1	354777-1	WIRE DISC, PLASTIC	37	
-	1	1	22480-5	WASHER, SPRING	36	
-	1	1	690212-1	POST, RAM	35	
					34	
					33	
-	8	8	18025-2	WASHER, LOCK (M4) SHEAR BL	32	
-	2	2	1-18024-0	SCR, BHC (M4X20) SHEAR PL	31	
					30	
-	2	2	18024-8	SCR, BHC (M4X12) STRIPPER	29	
-	1	1	3-690451-2	SPACER, STRIPPER	28	
-	1	1	240639-1	STRIPPER	27	
					26	
-	2	2	1320906-1	DRAG, STUD	25	
-	1	1	1320995-2	STRIP GUIDE	24	
					23	
-	2	2	4-22281-1	SPRING, DRAG	22	
					21	
-	1	1	1338665-1	DRAG, STOCK	20	
-	2	2	1338664-1	GUIDE, UPPER STRIP	19	
-	2	2	1338663-2	GUIDE, LOWER STRIP	18	
-	4	4	1-18024-8	SCR, BHC (M6X12) STRIP GD PL	17	
					16	
					15	
					14	
					13	
					12	
	-	1	1	691901-2	PLATE, REAR SHEAR	11
	-	2	2	1-240645-6	SPACER, SHEAR PLATE	10
	-	1	1	690783-2	PLATE, FRONT SHEAR	9
	1	2	1	1333220-6	ANVIL	8
	-	1	1	691157-3	BLADE, SLUG	7
						6
	-	1	1	2-240641-8	SPACER, SLUG BLADE	5
	-	1	1	238009-1	SPACER, BLOCK CRIMPER	4
	1	2	1	1-456134-2	CRIMPER, INSULATION	3
	-	1	1	455888-2	SPACER, CRIMPER	2
	1	2	1	456409-2	CRIMPER, WIRE	1

QTY REQD PER ASSY		PARTS LIST	
DIMENSIONS: mm [INCHES]		MATL	HT TR
DO NOT SCALE PRINT.		FIN	
TOLERANCES UNLESS OTHERWISE SPECIFIED:		-	
1	PLC DEC ±	-	
2	PLC DEC ±	-	
3	PLC DEC ±	-	
ANGLES ±		-	
SURF TEXTURE:		-	
REMOVE BURRS, BREAK SHARP EDGES RO.38 MAX		-	
DR	M. CLIFFORD	APP	F. BACKHURST
CHK	-	REL	27-02-01
NAME		M. CLIFFORD	
END FEED HD-I APPLICATOR		MACHINE REF	
SCALE		HD-I APPL	
DWG NO		1339514	
SHEET		1 OF 1	
REV		A	
CASE CODE		RESTRICTED TO	
00779		CUSTOMER AND ASSEMBLY DRAWING	

THIS DRAWING IS A CONTROLLED DOCUMENT.

LAYOUT L1339514
SET UP GAGE 458638-3

2000
RELEASED FOR PUBLICATION
BY AMP INCORPORATED. ALL RIGHTS RESERVED.
THIS DRAWING IS UNRELEASED.
COPYRIGHT 2000