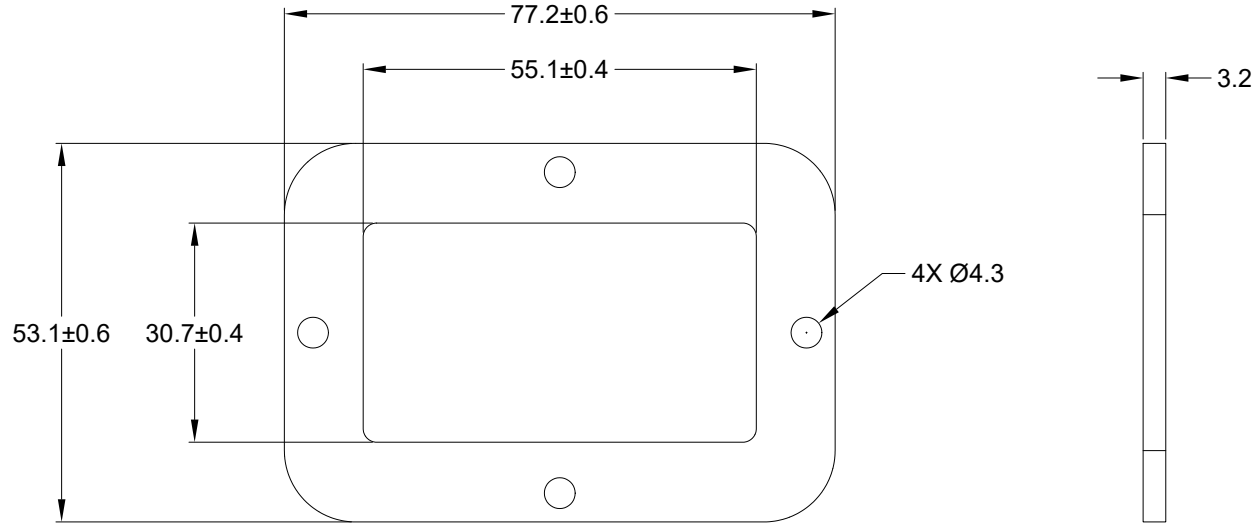


REVISIONS					
REV	ECO	DESCRIPTION	DATE	BY	APPR
A1		RELEASE NEW DRAWING	05APR21	SULLEN	TOMMY



NOTES: UNLESS OTHERWISE SPECIFIED

1. MATERIAL: CLD CELL SPONGE
2. COLORS: BLACK
3. RoHS COMPLIANT
4. THIS PART IS UESD ON ARC12-24PX(R) RECEPTACLE WHERE X=A,B,C,D KEYS
5. TEMPERATURE RATING: -57°C TO +107°C [-70°F TO +225°F]
6. ALL DIMENSIONS ARE FOR REFERENCE USE ONLY.

	ARC24-GKT	REF DRC24-GKT	
	PART NUMBER	DESCRIPTION	ITEM
QUANTITY	MATERIALS LIST		
<b>UNLESS OTHERWISE SPECIFIED</b> 1) All dimensions are in metric(mm). 2) Tolerances are as follows: 1 PL DEC ±0.30 2 PL DEC ±0.15 3 PL DEC ±0.08 Fractions ±1/64 Angles ±1° 3) Note reference =	<b>SIGNATURES</b>	<b>DATE</b>	<h1>Amphenol</h1> Sine Systems - www.amphenol-sine.com 44724 Morley Drive Clinton Township, MI 48036
	DRAWN: SULEN.ZHANG	05APR21	
	CHECKED: ORION.LI	06APR21	
	ENGINEER:		
	APPROVAL: TOMMY.XIE	07APR21	
MATERIAL SPECIFICATIONS:	CUSTOMER:		
PROCESS SPECIFICATIONS:	THIS DRAWING IS SUPPLIED FOR INFORMATION ONLY. DESIGN FEATURES, SPECIFICATIONS AND PERFORMANCE DATA SHOWN HEREON ARE THE PROPERTY OF THE AMPHENOL CORPORATION. NO RIGHTS OF REPRODUCTION ARE IMPLIED. ALL DIMENSIONS ARE SUBJECT TO NORMAL MANUFACTURING VARIATIONS.		
NEXT ASSY:			
	SIZE: A	TYPE: C-	DWG NO: ARC24-GKT
	SCALE: NONE		REVISION: A1
		SHEET 1	OF 1