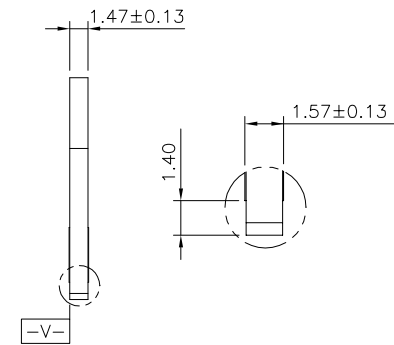
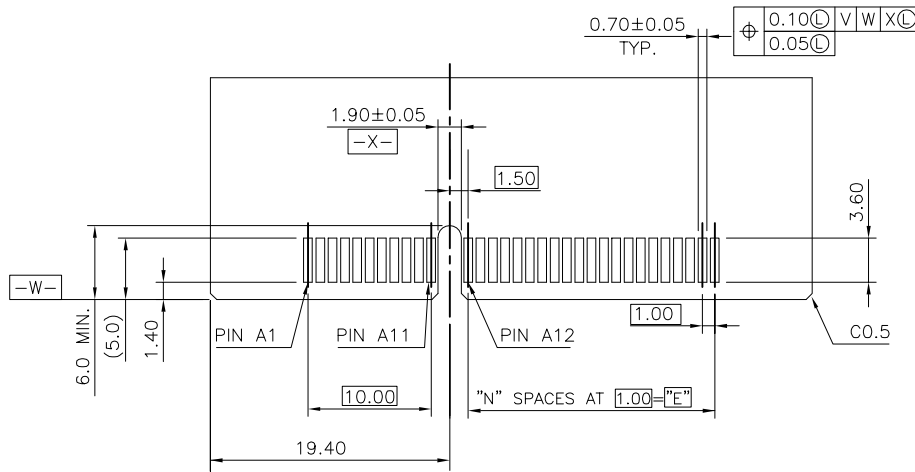
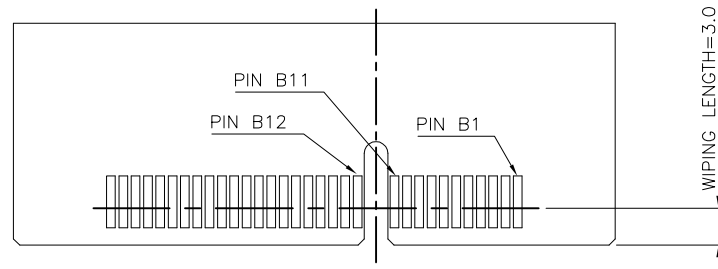


DIMENSIONS				
# POS REF.	N	A	B±0.23	E
36	6	7.65	25.00	6.00
64	20	21.65	39.00	20.00
98	37	38.65	56.00	37.00
164	70	71.65	89.00	70.00

mat'l. code	surface 58 ASME_Y14.5	tolerance ASME_Y14.5	projection 	product family PCI_EXPRESS
ltr	ecn no	dr	date	title PCI_EXPRESS_CARD_EDGE_GEN3 ASSEMBLY(SMT)
				dwg no 10126010
				sheet 1 of 5
				size A4
				type CUSTOMER Drawing
sheet index	revision sheet	A 1		



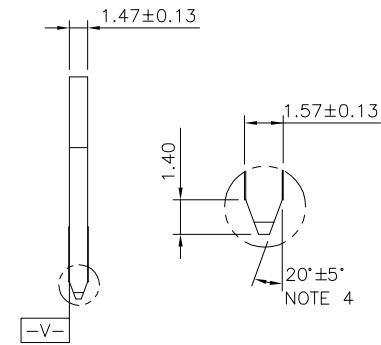
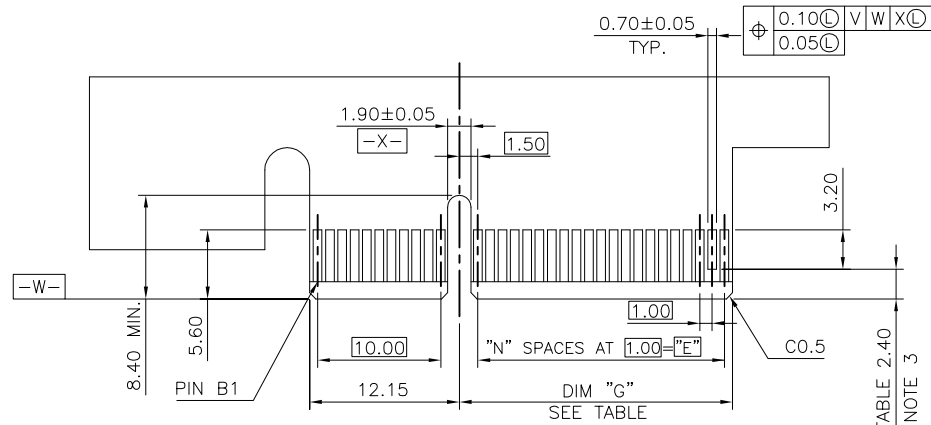
SCALE 2:1



RECOMMEND OF PCB DIMENSIONS

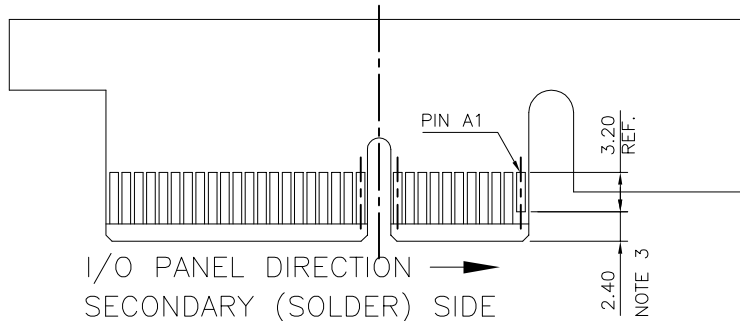
#	POS REF.	N	DIM "E"
36		6	6.00
64		20	20.00
98		37	37.00
164		70	70.00

mat'l. code		surface 58 / tolerance ASME_Y14.5 / ASME_Y14.5		projection		product family PCI_EXPRESS	
ltr	ecn no	dr	date	tolerances unless otherwise specified		title	
				angles	.X±.25	PCI_EXPRESS_CARD_EDGE_GEN3 ASSEMBLY(SMT)	
				0'±2'	.XX±.13	sheet 2 of 5 size	
					.XXX±.05	A4	
		dr	ZHENHUA_LIU	2015-12-07	scale N/A	dwg no 10126010	
		engr	ZHENHUA_LIU	2015-12-07		sheet 2 of 5 size	
		chr	STONE_LI	2015-12-07		A4	
		appd	PM_ZHENG	2015-12-07		type CUSTOMER Drawing	
sheet index	revision sheet	A	2				



SCALE 2:1

← I/O PANEL DIRECTION  
PRIMARY (COMPONENT) SIDE



I/O PANEL DIRECTION →  
SECONDARY (SOLDER) SIDE

ADD-IN CARD EDGE-FINGER DIMENSIONS

PIN "F" SEE TABLE 2.40  
NOTE 3

#	POS REF.	N	DIM "G"	"F"
36		6	8.15	B17
64		20	22.15	B31
98		37	39.15	B48
164		70	72.15	B81

mat'l. code	surface 58 ASME_Y14.5	tolerance ASME_Y14.5	projection 	product family PCI_EXPRESS
ltr	ecn no	dr	date	title PCI_EXPRESS_CARD_EDGE_GEN3 ASSEMBLY(SMT)
				scale N/A
				dwg no 10126010
				sheet 3 of 5
				size A4
				type CUSTOMER Drawing
sheet index	revision sheet	A 3		



NOTES:

1.MATERIAL:

HOUSING: HIGH TEMPERATURE NYLON, GLASS FILLED UL94V-0 RATED.

TERMINAL: COPPER ALLOY

PLATING: SEE PRODUCT NUMBER CODE

FINISH: TIN OVER NICKEL

2.PRODUCT SPECIFICATION: GS-12-233

PACKAGING SPECIFICATION: GS-14-858

③NO TIE BAR PERMITTED FROM CARD EDGE TO LEADING EDGE OF PAD FOR PINS A1 AND PIN NUMBERS "F".

④CHAMFER EDGES MUST BE FREE OF CUTTING BURRS.

⑤FREQUENCY & LOCATION AT SUPPLIER DISCRETION. RIDGE MAY BE CONTINUOUS WITH NO BREAKS.

6.RoHS COMPATIBLE PRODUCT SPECIFICATIONS

a - PLATING:

- "LF" MEANS THE PRODUCT IS LEAD-FREE, 2um MINIMUM MATTE TIN OVER 1.27um MINIMUM NICKEL UNDERPLATE.

b - MANUFACTURING PROCESS COMPATIBILITY

- THE HOUSING WILL WITHSTAND EXPOSURE TO 260°C±5°C SOLDER BATH TEMPERATURE FOR 5 SECONDS IN A REFLOW SOLDER APPLICATION WITH A 1.6mm MIN THICK CIRCUIT BOARD.

7.P/N SEE TABLE AND PRODUCT NUMBER CODE.

PRODUCT NUMBER CODE

10126010 -x 0 x 0 x x x □ □

HOUSING COLOR OPTIONS

1-BLACK

RESERVE

TERMINAL PLATING OPTIONS

- 0-50u" Ni UNDERPLATE
- 30u" Au CONTACT AREA
- 100u" TIN TAIL AREA ----- COMPATIBLE RoHS
- 1-50u" Ni UNDERPLATE
- 15u" Au CONTACT AREA
- 100u" TIN TAIL AREA ----- COMPATIBLE RoHS
- 2-50u" Ni UNDERPLATE
- GOLD FLASH CONTACT AREA
- 100u" TIN TAIL AREA ----- COMPATIBLE RoHS

LEAD FREE OPTION

"LF" FOR TERMINAL PLATING OPTION 0,1,2

PACKAGING OPTIONS

T: TRAY PACKAGING WITH CAP(IN GENERAL VERTICAL DIRECTION)

POS OPTIONS

- 0-36
- 1-64
- 2-98
- 3-164

PCB THICKNESS OPTIONS

0-1.57mm

mat'l. code		surface 58		tolerance		projection		product family	
		ASME_Y14.5		ASME_Y14.5				PCI_EXPRESS	
ltr	ecn no	dr	date	tolerances unless otherwise specified				title	
				angles	.X±.25			PCI_EXPRESS_CARD_EDGE_GEN3	
				lines	.XX±.13			ASSEMBLY(SMT)	
				0'±2'	.XXX±.05	scale N/A		dwg no	
				dr	ZHENHUA_LIU	2015-12-07			sheet 4 of 5
				engr	ZHENHUA_LIU	2015-12-07	10126010		A4
				chr	STONE_LI	2015-12-07	type		CUSTOMER Drawing
				app	PM_ZHENG	2015-12-07			
sheet index	revision	A							
	sheet	4							

A

A

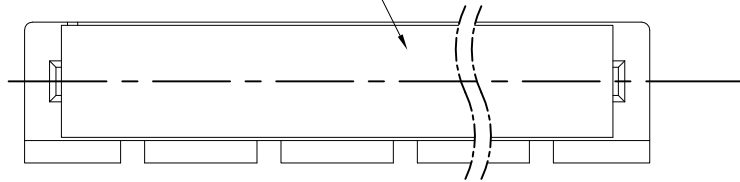
B

B

5



INSERT CAP



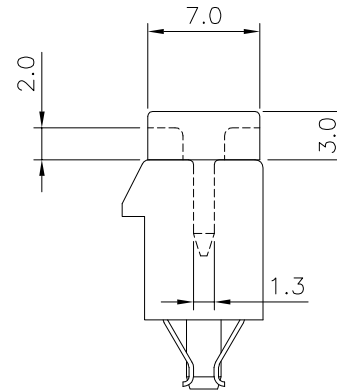
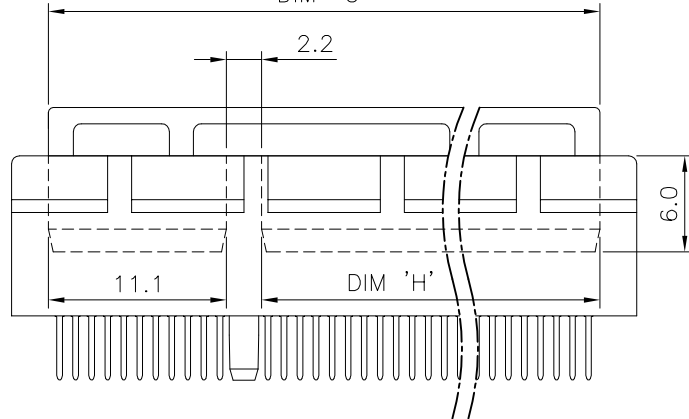
NOTES:

MATERIAL:

INSERT CAP: HIGH TEMPERATURE PLASTIC  
UL94V-0; BLACK COLOR.

DIMENSIONS			
POSITION	G	H	STATUS
36	20.4	7.1	AVAILABLE
64	34.4	21.1	AVAILABLE
98	51.4	38.1	AVAILABLE
164	84.4	71.1	AVAILABLE

DIM "G"



A

A

B

B

mat'l. code		surface 58 / tolerance ASME_Y14.5 / ASME_Y14.5		projection		product family PCI_EXPRESS	
ltr	ecn no	dr	date	tolerances unless otherwise specified		title	
				angles	.X±.30	PCI_EXPRESS_CARD_EDGE_GEN3 ASSEMBLY(SMT)	
				0'±2'	.XX±.20	sheet 5 of 5 size	
					.XXX±.10	A4	
		dr	ZHENHUA_LIU	2015-12-07	scale N/A	dwg no 10126010	
		engr	ZHENHUA_LIU	2015-12-07		type CUSTOMER Drawing	
		chr	STONE_LI	2015-12-07			
		appd	PM_ZHENG	2015-12-07			
sheet index	revision sheet	A	5				

5