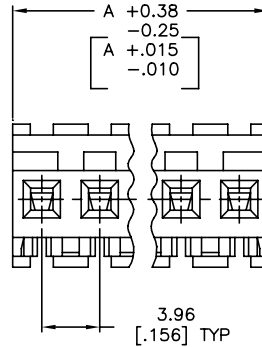
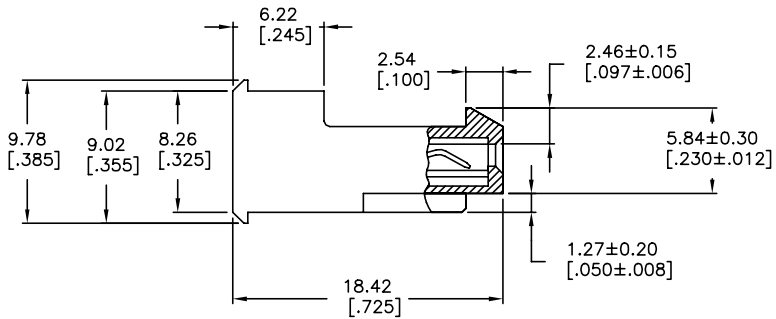
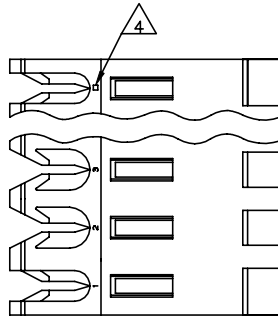


THIS DRAWING IS UNPUBLISHED. RELEASED FOR PUBLICATION
 © COPYRIGHT - By - TE CONNECTIVITY ALL RIGHTS RESERVED.

LOC	DIST	REVISIONS			
P	LTR	DESCRIPTION	DATE	DN	APD
CM	54	V	REVISED PER ECR-20-000820	27MAY2020	PC SW



REV	DATE	DESCRIPTION	NO OF CIRCUITS	PART NO
95.10	[3.744]		24	5-640600-4
91.14	[3.588]		23	5-640600-3
87.17	[3.432]		22	5-640600-2
83.21	[3.276]		21	5-640600-1
79.25	[3.120]		20	5-640600-0
75.29	[2.964]		19	4-640600-9
71.32	[2.808]		18	4-640600-8
67.36	[2.652]		17	4-640600-7
63.40	[2.496]		16	4-640600-6
59.44	[2.340]		15	4-640600-5
55.47	[2.184]		14	4-640600-4
51.51	[2.028]		13	4-640600-3
47.55	[1.872]		12	4-640600-2
43.59	[1.716]		11	4-640600-1
39.62	[1.560]		10	4-640600-0
35.66	[1.404]		9	3-640600-9
31.70	[1.248]		8	3-640600-8
27.74	[1.092]		7	3-640600-7
23.77	[.936]		6	3-640600-6
19.81	[.780]		5	3-640600-5
15.85	[.624]		4	3-640600-4
11.89	[.468]		3	3-640600-3
7.92	[.312]		2	3-640600-2
95.10	[3.744]		24	2-640600-4
91.14	[3.588]		23	2-640600-3
87.17	[3.432]		22	2-640600-2
83.21	[3.276]		21	2-640600-1
79.25	[3.120]		20	2-640600-0
75.29	[2.964]		19	1-640600-9
71.32	[2.808]		18	1-640600-8
67.36	[2.652]		17	1-640600-7
63.40	[2.496]		16	1-640600-6
59.44	[2.340]		15	1-640600-5
55.47	[2.184]		14	1-640600-4
51.51	[2.028]		13	1-640600-3
47.55	[1.872]		12	1-640600-2
43.59	[1.716]		11	1-640600-1
39.62	[1.560]		10	1-640600-0
35.66	[1.404]		9	640600-9
31.70	[1.248]		8	640600-8
27.74	[1.092]		7	640600-7
23.77	[.936]		6	640600-6
19.81	[.780]		5	640600-5
15.85	[.624]		4	640600-4
11.89	[.468]		3	640600-3
7.92	[.312]		2	640600-2

- △ MATERIAL: CONNECTOR - NYLON UL94V-2 (YELLOW).
CONTACTS - 0.30[.012] THICK COPPER ALLOY (BRIGHT TIN-LEAD 0.00203[.000080] MIN. THICK FOR CONTACTS 640600-2 THRU 2-640600-4) (MATTE WHISKER MITIGATED TIN 0.00203[.000080] MIN THICKNESS OVER NICKEL UNDERPLATE FOR 3-640600-2 THRU 5-640600-4).
- 2 CONTACTS ACCEPT 20 AWG WIRE WITH 2.41[.095] MAX INSULATION DIAMETER.
- 3 CONTACTS MUST ACCEPT 1.14±0.03[.045±.001] SQUARE POST AND REMAIN LOCKED IN POSITION.
- △ IDENTIFICATION NUMBER FOR LAST CIRCUIT MAY NOT APPEAR ON ALL ASSEMBLIES.
- 5 DIMENSIONS IN BRACKETS ARE IN INCHES.
- 6 HOUSING FEATURES ARE: FEED-THRU WITH LOCKING RAMP.
- △ OBSOLETE PARTS: OBSOLETE CIS STREAMLINING PER D.RENAUD/D.SINISI
- △ OBSOLETE PARTS

SUPERSEDED △	95.10	[3.744]	24	2-640600-4
	91.14	[3.588]	23	2-640600-3
	87.17	[3.432]	22	2-640600-2
	83.21	[3.276]	21	2-640600-1
	79.25	[3.120]	20	2-640600-0
	75.29	[2.964]	19	1-640600-9
	71.32	[2.808]	18	1-640600-8
	67.36	[2.652]	17	1-640600-7
	63.40	[2.496]	16	1-640600-6
	59.44	[2.340]	15	1-640600-5
△ SUPERSEDED	55.47	[2.184]	14	1-640600-4
△ SUPERSEDED	51.51	[2.028]	13	1-640600-3
△ SUPERSEDED	47.55	[1.872]	12	1-640600-2
	43.59	[1.716]	11	1-640600-1
	39.62	[1.560]	10	1-640600-0
	35.66	[1.404]	9	640600-9
△ SUPERSEDED	31.70	[1.248]	8	640600-8
	27.74	[1.092]	7	640600-7
	23.77	[.936]	6	640600-6
△ SUPERSEDED	19.81	[.780]	5	640600-5
	15.85	[.624]	4	640600-4
	11.89	[.468]	3	640600-3
	7.92	[.312]	2	640600-2

THIS DRAWING IS A CONTROLLED DOCUMENT. DWG: B. LEWIS 12FEB91
 CHK: R. SWING 12FEB91
 APD: D. CLARK 19FEB91

TE Connectivity
 MTA-156 CONNECTOR ASSEMBLY, 20 AWG, STANDARD

DIMENSIONS: mm [INCHES]	TOLERANCES UNLESS OTHERWISE SPECIFIED:	SIZE	CAGE CODE	DRAWING NO	RESTRICTED TO
0 PLC ± -	1 PLC ± -	A2	00779	640600	-
2 PLC ± 0.13 [0.005]	3 PLC ± -	WEIGHT	SCALE	SHEET	REV
4 PLC ± -	ANGLES ± -	CUSTOMER DRAWING	4:1	1 of 1	V