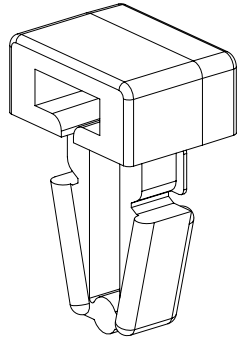
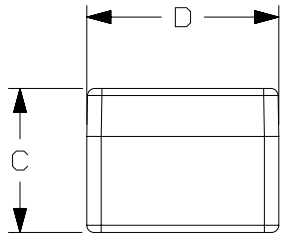



THIS COPY IS PROVIDED ON A RESTRICTED BASIS AND IS NOT TO BE USED IN ANY WAY DETRIMENTAL TO THE INTERESTS OF PANDUIT CORP.

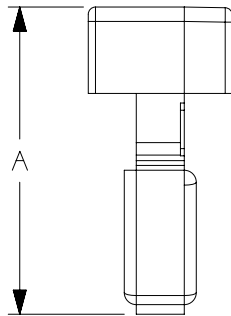
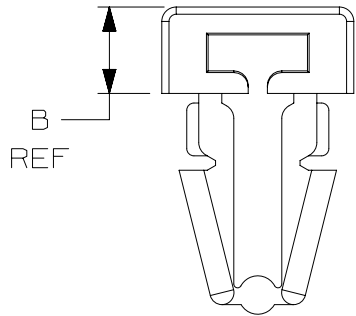


PANDUIT PART NO.	USE WITH THESE CABLE TIE CROSS-SECTIONS	DIMENSIONS				WEIGHT g/100pcs
		A	B	C	D	
PM2H25	MINIATURE INTERMEDIATE STANDARD	.62 (15.8)	.18 (4.6) REF	.30 (7.6)	.38 (9.6)	.10 (.45)

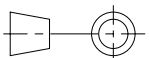


NOTES:

- SEE CURRENT PRICE SHEET FOR PART NUMBER SUFFIX DESIGNATION FOR PACKAGE SIZE, AND COLOR.
- (*) DIMENSIONAL VARIANCE IS POSSIBLE DUE TO MOLDING PROCESS RELATED SINK MARKS.
- APPLICATION SPECIFICATION:
HOLE DIAMETER: .245 (6.3) - .255 (6.5)
PANEL THICKNESS: .125 (3.2) (MAX)
-  BAG MAY CONTAIN EXTRA PIECES TO COMPENSATE FOR VARIANCE IN THE PACKAGING PROCESS. PANDUIT ASSURES MINIMUM PIECE COUNT AS STATED ON THE BAG.



REV	DATE	BY	CHK	APR	DESCRIPTION	ECN
4	12/7/2020	RVU	JADE	RMHI	ADDED NOTE 4.	GAECN05828
3	5/27/08	DJSM			CORRECTED FILE NAME.	GB0239IJ
2	5/22/08	DJSM			TABULARIZED DIMENSIONS, REMOVED WINDOW DIMENSIONS.	GB0239IJ
1	02/05/03	MSAD			.070 +/--.015 WAS .070 +/--.010 (1.8 +/--.38) (1.8 +/--.25).	GB0239IJ
R	01/10/02	LGG			INITIAL RELEASE.	GB0239IJ

TITLE		Cable Tie Mount Push Mount		
		CUSTOMER DRAWING		
ITEM REVISION NAME		G0359710/01		
DATASET FILE NAME		G0359710_DC_GB0239IJ_04		
UNLESS OTHERWISE SPECIFIED, DIMENSIONAL TOLERANCES ARE: IN [mm]		PANDUIT MATERIAL: NYLON 6/6 DRAWING NUMBER: GB0239IJ		
.x ± 0.05 [1.3] .xxx ± 0.010 [0.25] .xx ± 0.02 [0.5] ANGLES ± 5 °				
		THIRD ANGLE PROJECTION		
DRAWN BY	DATE	CHK	SCALE	SIZE
LGG	01/20/02	JADE	5:2	A
SHT 1 OF 1				

D10100DA/20