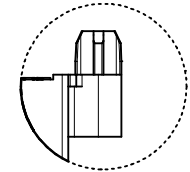
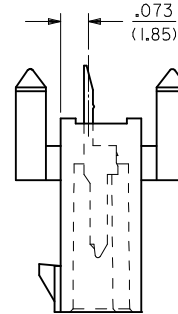
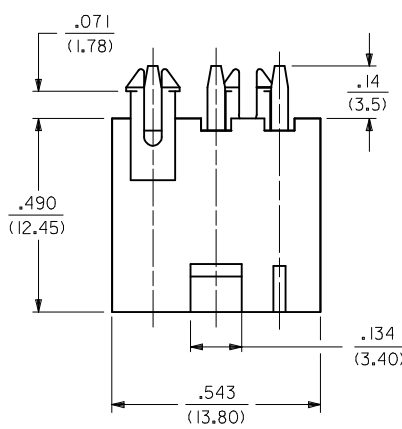
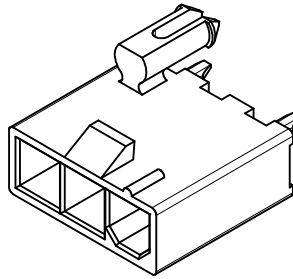
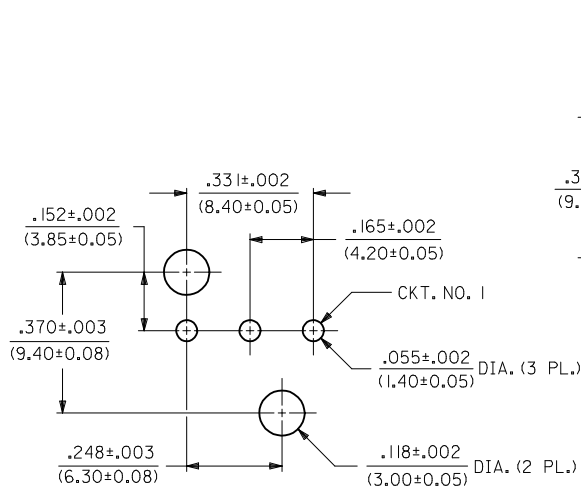


NOTES:

- MATERIALS:
HOUSING:
"BLANK"=NYLON 6/6, UNFILLED UL94 V-2, COLOR: NATURAL
"130"=GLASS FILLED LCP, UL94 V-0, COLOR: BLACK
IEC 60335-1, 5TH EDITION GLOW WIRE CAPABLE
"210"=NYLON 6/6, UNFILLED UL94 V-0, COLOR: NATURAL
"400"=NYLON 6/6, UNFILLED UL94 V-0, COLOR: BLACK
TERMINALS:
BRASS
2. TERMINAL PLATING:
"BLANK"=.000035/(0.00090) MIN. REFLOWED MATTE TIN OVER
.000020/(0.00050) MIN. COPPER (PREPLATE)
(FINISH IS BRIGHT IN APPEARANCE, THICKNESS AS
APPLIED PRIOR TO REFLOW)
GS2=.000015/(0.00038) MIN. SELECT GOLD AND
.000100/(0.00254) MIN. SELECT MATTE TIN
OVER .000050/(0.00127) MIN. NICKEL OVERALL
GS=.000030/(0.00076) MIN. SELECT GOLD AND
.000100/(0.00254) MIN. SELECT MATTE TIN
OVER .000050/(0.00127) MIN. NICKEL OVERALL
S=.000100/(0.00254) MIN. BRIGHT TIN OVER
.000050/(0.00127) MIN. NICKEL
MS=.000100/(0.00254) MIN. MATTE TIN OVER
.000050/(0.00127) MIN. NICKEL
3. PRODUCT SPECIFICATION: PS-5556-001
4. PACKAGING: TRAY PACKED PER PK-5556-002
5. PART MATES WITH MINI-FIT JR. RECEPTACLE NO. 5557.
6. ALL DIMENSIONS ARE REFERENCE UNLESS OTHERWISE
SPECIFIED.
7. PART IS NOT DESIGNED FOR CURRENT SHARING.
8. PARTS ARE NOT TO BE MATED OR UN-MATED WHILE
CIRCUITS ARE LIVE.
9. PART CONFORMS TO CLASS "B" REQUIREMENTS OF
COSMETIC SPECIFICATION PS-45499-002.

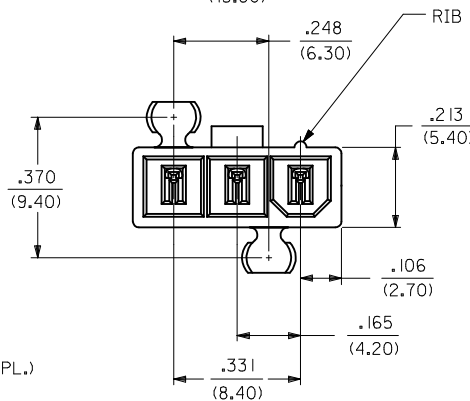


PRESS FIT PEG OPTION



RECOMMENDED HOLE LAYOUT FOR
.070/(1.78) MAX. THICK P. C. BOARD

RIB INDICATES CKT. #1



PART NO.	ENG. NO.	HOUSING MAT'L. (SEE NOTE 1)	PLATING (SEE NOTE 2)
39-30-1039	5566-03A3	"BLANK"	"BLANK"
39-30-2033	↑ -03A3GS2	↑	GS2
39-30-2031	-03A3GS	↓	GS
39-30-5037	-03A3S	↓	S
46999-0792	-03A3MS	"BLANK"	MS
46999-0680	-03A15GS-130	130	GS
46999-0685	-03A15MS-130	130	MS
39-30-2030	-03A3-210	210	"BLANK"
39-30-2034	-03A3GS2-210	↑	GS2
39-30-2032	-03A3GS-210	↓	GS
39-30-5038	-03A3S-210	↓	S
46999-0793	↓ -03A3MS-210	210	MS
46999-0563	5566-03A3MS-400	400	MS

LEGEND

5566-03A3*-***

- BASE NO. _____
- CIRCUIT SIZE _____
- MOUNTING _____
3 = SNAP FIT PEGS
15 = PRESS FIT PEGS
- PLATING _____
(SEE NOTE 2)
- HOUSING MATERIAL _____
(SEE NOTE 1)

CORRECT PEG (G-9) EC NO: UCP2017-0370 DRAWN:CSLAFTER 2016/08/12 CHKD:JBELL 2016/08/12 APPR:FSMITH 2016/09/21	QUALITY SYMBOLS ▽=0 ▽=0 ▽=0	GENERAL TOLERANCES (UNLESS SPECIFIED)		DIMENSION STYLE IN/MM		SCALE 4:1	DESIGN UNITS METRIC	THIRD ANGLE PROJECTION		
		mm	INCH	DRAWN BY GEP	DATE 1990/06/07	MINI-FIT JR. VERT. HDR. ASSY. W/PEGS (SINGLE ROW)				
		4 PLACES ± --- ± ---		CHECKED BY RJF	DATE 1990/06/07	DOCUMENT NO. SDA-5566-03*3*				
		3 PLACES ± --- ± .010		APPROVED BY FSMITH	DATE 2012/09/05					SHEET NO. 1 OF 1
		2 PLACES ± 0.25 ± .020		THIS DRAWING CONTAINS INFORMATION THAT IS PROPRIETARY TO MOLEX INCORPORATED AND SHOULD NOT BE USED WITHOUT WRITTEN PERMISSION						
		1 PLACE ± .50 ± ---								
		0 PLACE ± --- ± ---								
		ANGULAR ±1/2°		SEE CHART						
		DRAFT WHERE APPLICABLE MUST REMAIN WITHIN DIMENSIONS		SIZE C						