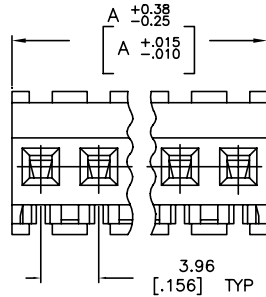
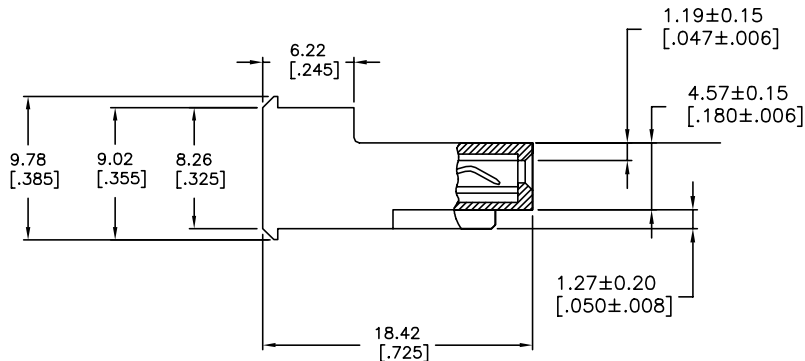
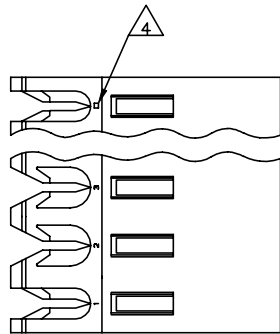


THIS DRAWING IS UNPUBLISHED. RELEASED FOR PUBLICATION
 © COPYRIGHT - By - ALL RIGHTS RESERVED.

LOC		DIST		REVISIONS				
P	LTN	DESCRIPTION		DATE	DN	APD		
CM	54	T	REVISED PER ECR-20-000824	29MAY2020	PC	SW		



DIM A	NO OF CIRCUITS	PART NO
95.10 [3.744]	24	5-640607-4
91.14 [3.588]	23	5-640607-3
87.17 [3.432]	22	5-640607-2
83.21 [3.276]	21	5-640607-1
79.25 [3.120]	20	5-640607-0
75.29 [2.964]	19	4-640607-9
71.32 [2.808]	18	4-640607-8
67.36 [2.652]	17	4-640607-7
63.40 [2.496]	16	4-640607-6
59.44 [2.340]	15	4-640607-5
55.47 [2.184]	14	4-640607-4
51.51 [2.028]	13	4-640607-3
47.55 [1.872]	12	4-640607-2
43.59 [1.716]	11	4-640607-1
39.62 [1.560]	10	4-640607-0
35.66 [1.404]	9	3-640607-9
31.70 [1.248]	8	3-640607-8
27.74 [1.092]	7	3-640607-7
23.77 [.936]	6	3-640607-6
19.81 [.780]	5	3-640607-5
15.85 [.624]	4	3-640607-4
11.89 [.468]	3	3-640607-3
7.92 [.312]	2	3-640607-2
95.10 [3.744]	24	5-640607-4
91.14 [3.588]	23	5-640607-3
87.17 [3.432]	22	5-640607-2
83.21 [3.276]	21	5-640607-1
79.25 [3.120]	20	5-640607-0
75.29 [2.964]	19	4-640607-9
71.32 [2.808]	18	4-640607-8
67.36 [2.652]	17	4-640607-7
63.40 [2.496]	16	4-640607-6
59.44 [2.340]	15	4-640607-5
55.47 [2.184]	14	4-640607-4
51.51 [2.028]	13	4-640607-3
47.55 [1.872]	12	4-640607-2
43.59 [1.716]	11	4-640607-1
39.62 [1.560]	10	4-640607-0
35.66 [1.404]	9	3-640607-9
31.70 [1.248]	8	3-640607-8
27.74 [1.092]	7	3-640607-7
23.77 [.936]	6	3-640607-6
19.81 [.780]	5	3-640607-5
15.85 [.624]	4	3-640607-4
11.89 [.468]	3	3-640607-3
7.92 [.312]	2	3-640607-2

- 1 MATERIAL: CONNECTOR - NYLON UL94V-2 (WHITE)
CONTACTS - 0.30[.012] THICK COPPER ALLOY (BRIGHT TIN-LEAD 0.00203[.000080] MIN. THICK FOR CONTACTS 640607-2 THRU 2-640607-4) (MATTE WHISKER MITIGATED TIN 0.00203[.000080] MIN THICKNESS OVER NICKEL UNDERPLATE FOR 3-640607-2 THRU 5-640607-4).
- 2 CONTACTS ACCEPT 24 AWG WIRE WITH 2.41[.095] MAX INSULATION DIAMETER.
- 3 CONTACTS MUST ACCEPT 1.14±0.03[.045±.001] SQUARE POST AND REMAIN LOCKED IN POSITION.
- 4 IDENTIFICATION NUMBER FOR LAST CIRCUIT MAY NOT APPEAR ON ALL ASSEMBLIES.
- 5 DIMENSIONS IN BRACKETS ARE IN INCHES.
- 6 HOUSING FEATURES ARE: FEED-THRU WITHOUT LOCKING RAMP.
- 7 OBSOLETE PARTS: OBSOLETE CIS STREAMLINING PER D.RENAUD/D.SINISI
- 8 OBSOLETE PARTS

THIS DRAWING IS A CONTROLLED DOCUMENT.

DRW: B. LEWIS 12FEB91
 CHK: R. SWING 12FEB91
 APD: D. CLARK 19FEB91

TE Connectivity
 MTA-156 CONNECTOR ASSEMBLY,
 24 AWG, STANDARD

108-1051
 APPLICATION SPEC
 114-1020

MATERIAL: 1
 FINISH: 1

SIZE: A2
 CAGE CODE: 00779
 DRAWING NO: 640607
 RESTRICTED TO: -

CUSTOMER DRAWING
 SCALE: 4:1
 SHEET: 1 OF 1
 REV: T