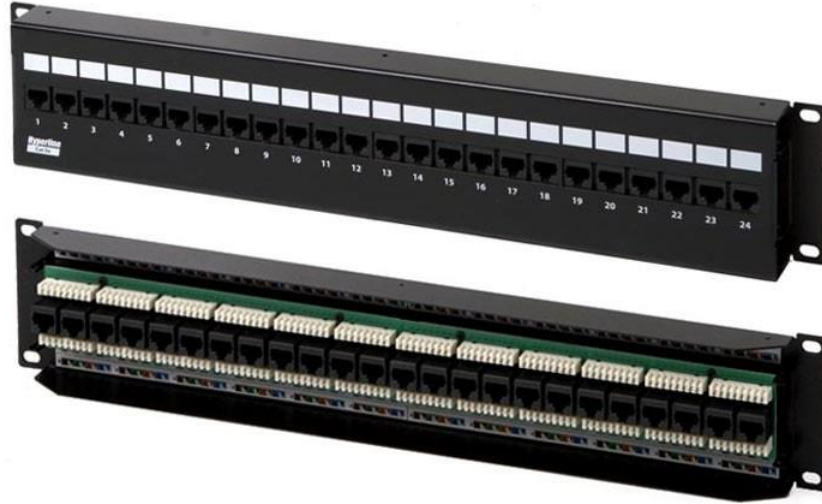


Front Access Wall Mount Patch Panel, 12 and 24 ports RJ-45, Category 5e



Specifications

Meets ANSI/TIA/EIA-568-B.2 Category 5e requirements
Meets TIA/EIA TSB-40
Meets ISO/IEC Generic Cabling Standard 11801:2002 ed.2.0
Meets CENELEC Generic Cabling Standard EN50173 1:2002

Description

Smooth rear side of panel for convenient mounting to the wall
This patch panel is designed for 22-26 AWG solid conductors
Height is 1U
Horizontal termination

Materials

IDC: PC UL94V-0
PCB: FR-4 1.6 mm (0.06") thick, 2 layers
Contacts: 0.35 mm (0.014") phosphor bronze with 1.27 micron (50 microinches) gold plating on contact area
Metal housing: 1.2 mm (0.04") thick metal

Construction characteristic features

Modern design and mounting simplicity
Color marking of conductors according to T568B and T568A
Color and numeral marking of IDC modules on the front side of the panel

Numeral marking on the cover
Space for additional marking
Hyperline patch cord usage provides the best connection
Dual IDC contacts provide minimal crosstalk
110 type punch down tool is used for cable termination

Electrical characteristics

According to UL 1863
Current rating: 1.5 A Max.
Voltage rating: 150 V
Contact Resistance: 20 mOhm
Insulation Resistance: 500 MOhm
Dielectric Withstand Voltage: 1000 VAC RMS, 60Hz/1min

Package

Hyperline patch panel
Plastic cable ties

Ordering

PPW-12-8P8C-C5e-FR Front access wall mount **patch panel**, 12 ports **RJ45**, category 5e

PPW-24-8P8C-C5e-FR Front access wall mount **patch panel**, 24 ports **RJ45**, category 5e