

1

2

3

4

5

6

7

A

B

C

D

E

F

G

H

A

B

C

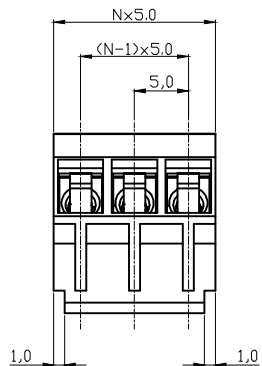
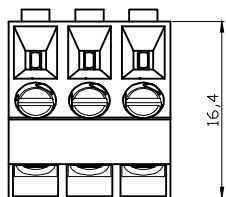
D

E

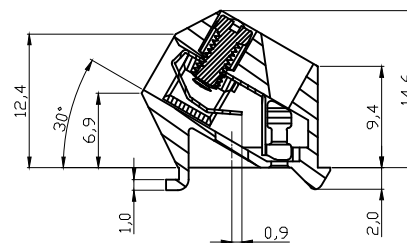
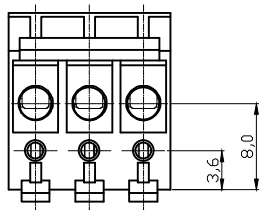
F

G

H



N=Number of contact



## Material

Contact(metal housing): Brass Stamped (CuZn).  
 Terminal screw: Steel Zinc plating "-"slot type  
 Wire guard: Stainless steel  
 Insulator body(housing):Thermoplastic(UL94V-0)

## Electrical

cULus

Voltage rating: 300V  
 Current rating: 10A  
 Wire range:  
 Solid wire(AWG): 14-22  
 Stranded wire(AWG): 14-22  
 Torque(Lb-In): 3.5  
 Screw: M3  
 Wire strip length: 6-7mm  
 Withstanding Voltage: 1.6KV  
 Operating temperature: -40°C to +115°C  
 Safety Approval: US

RoHS compliant

Unit: mm



File No.: E349947

Scale	1:1						Date	Name	Customer-No.
TOLERANCE						Drawn	03.01.2007	Hellwig	ASSMANN WSW-No. <b>A-TB500-VGxxSB</b>
X.	±0.50					Approved	18.04.2016	Joanna	
X.X	±0.30								Drawing-No.
X.XX	±0.10	③	Add UL	18.04.2016	Joanna				<b>ASS 0750 CO</b>
DIM	TOL	②	Redraw	29.07.2009	Dean				
X.°	±1°								Replace
X.X°	±X°	①	Drawn	03.01.2007	Hellwig				
Angle	TOL	Id.	Modification	Date	Name				

1

2

3

4

5

6

7

SVXXXX