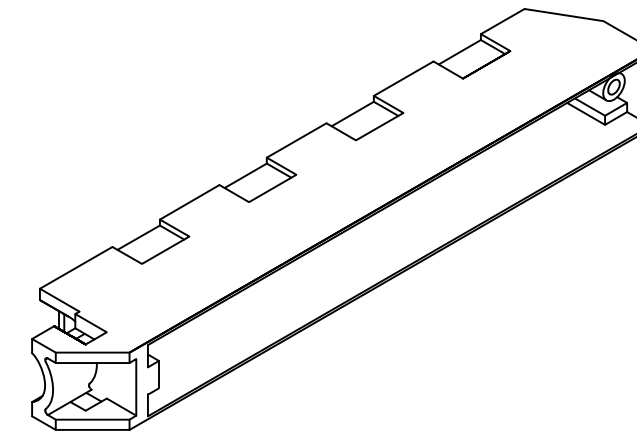
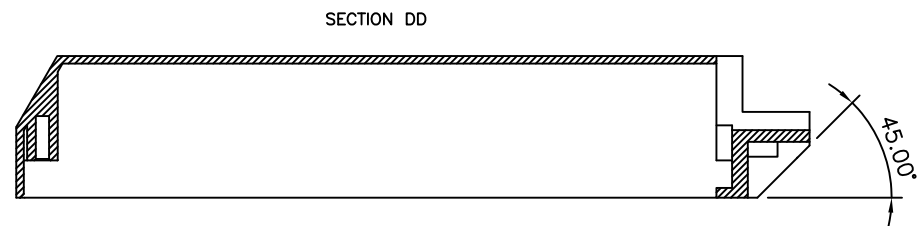
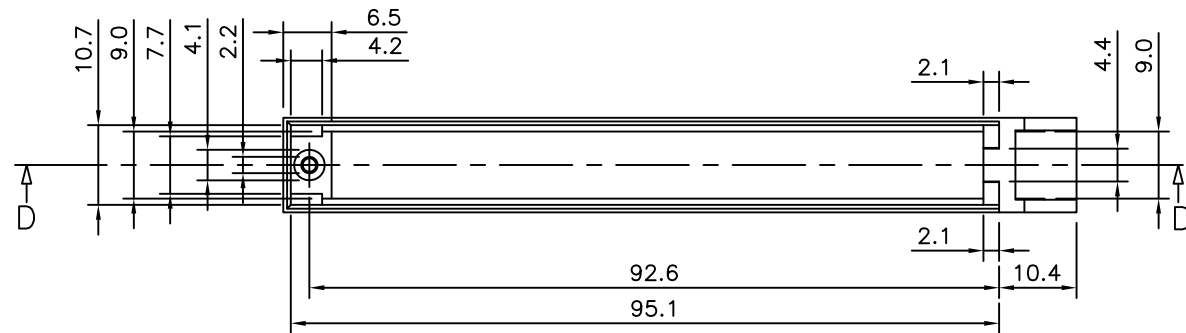
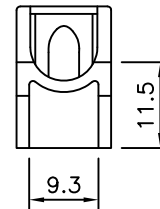
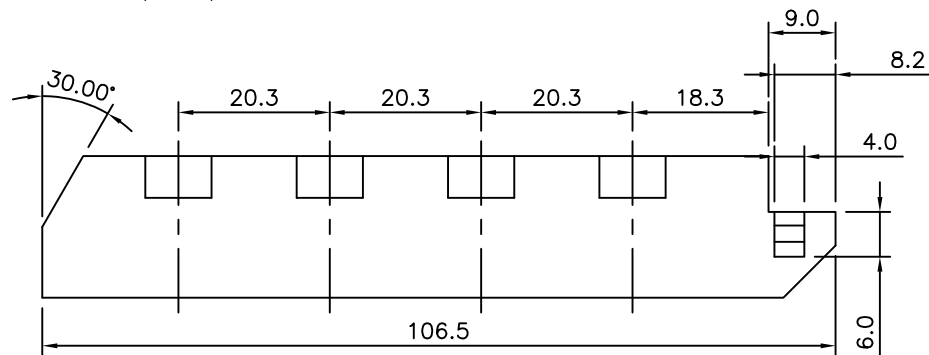
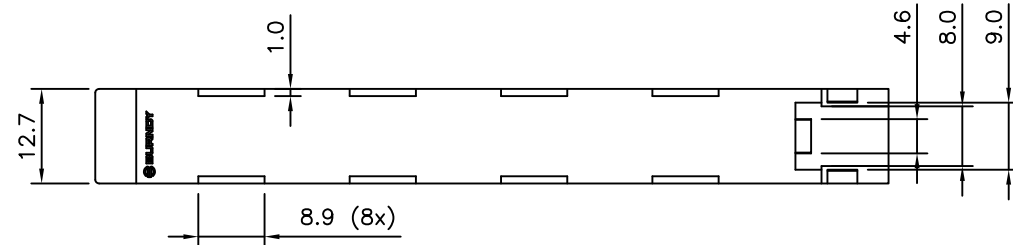
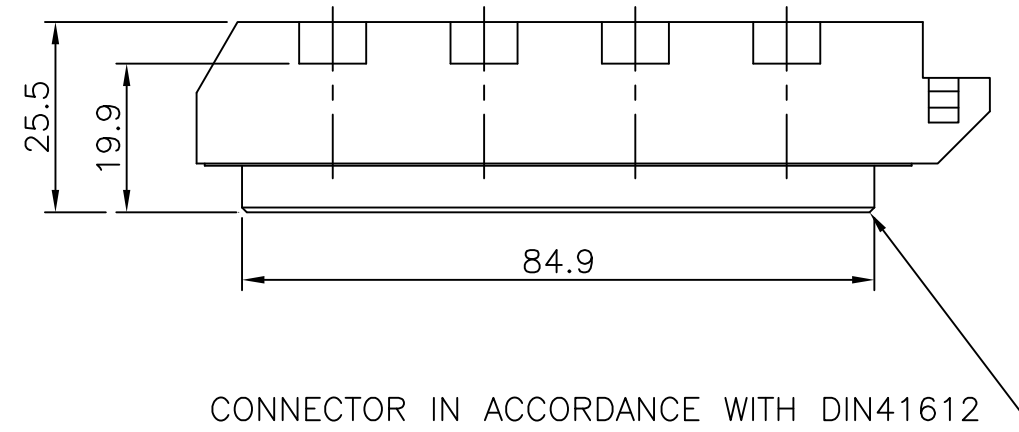


PRODUCT NUMBER BPBS8B96CAP2

PRODUCT NUMBER BPBS8B96CAP2LF ← RoHS COMPATIBLE



ASSEMBLED VIEW



CONNECTOR IN ACCORDANCE WITH DIN41612

NOTES:

- BPBS8B96CAP2 = LOW PROFILE COVER (BPBS8B96P5) + MOUNTING SCREW (HPTE1604)
- BPBS8B96CAP2LF = LOW PROFILE COVER (BPBS8B96P5) + MOUNTING SCREW (HPTE1604LF)
- LOW PROFILE COVER : GLASS-FILLED PPO MATERIAL
- CABLE DIAMETER 8 MM. MAX.
- " LF " SUFFIX TO PRODUCT NUMBER FOR RoHS COMPLIANT/LEADFREE PRODUCTS.
- OPTIONAL : TIE WRAP (TF4); MAX. WIDTH = 3,9 MM

NOTES:-

1. THE "LF" PRODUCTS MEET EUROPEAN UNION DIRECTIVES AND OTHER COUNTRY REGULATIONS AS DESCRIBED IN GS-22-008.
2. LEAD FREE OR RoHS DIRECTIVE LABELING TO BE PROVIDED AS PER GS-14-920 FOR RoHS COMPLIANT/ LEAD FREE VERSION.

mat'l. code				surface		tolerance		projection		product family	
SEE NOTE				ISO 1302 ✓		ISO 406 ISO 1101		mm		BPS8	
				tolerances unless otherwise specified						title	
A F00819 DLE 2000-10-20				angles		0.1±0.01				ASSY BPS8	
B I05-0138 MINI 2005-08-08				linear		0.01±0.05				96 POS. COVER SET	
C I06-0067 MINI 2006-06-01				±0°30'				scale 1.5:1		dwg no	
D ELX-I-26604 MJA 2017-04-10				dr		D.LEGRAND 2000-10-20				sheet 1 of 1 size	
				enr		J.F.NOTTEAU 2000-10-20				55348 A3	
				chr		RAKHEE GEORGE 2006-06-01				type	
				appd		RAKHEE GEORGE 2006-06-01				Product Customer Drawing	
sheet index		revision sheet		D 1							