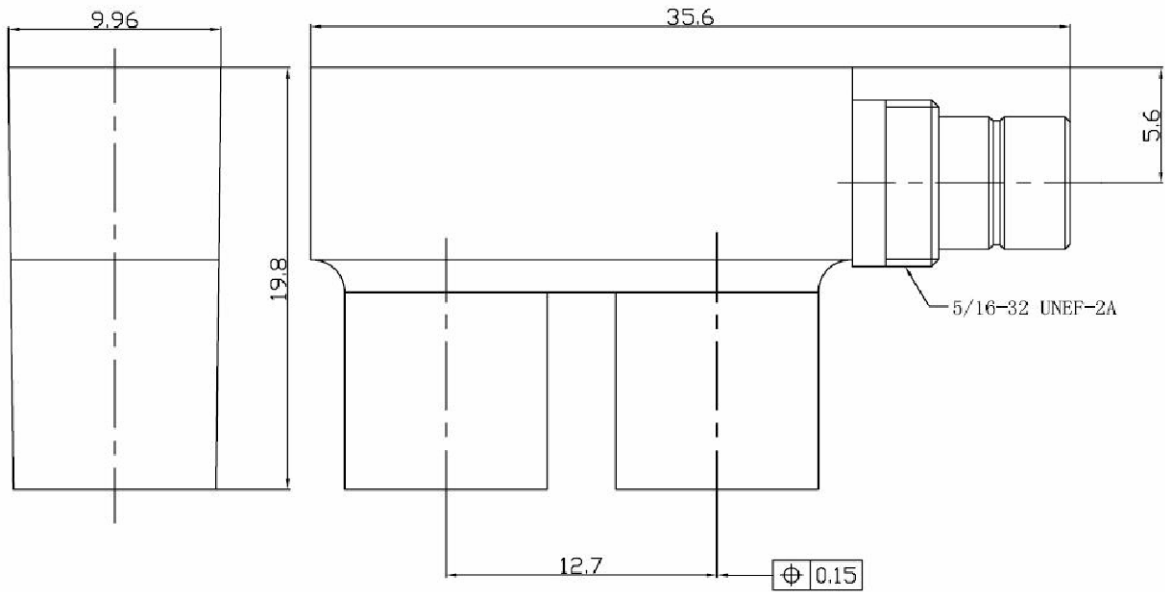


'U' LINK FEMALE-FEMALE WITH TEST PORT

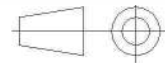
R214.791.703

PITCH 12.7

Series : T43



All dimensions are in mm.



COMPONENTS	MATERIALS	PLATING (µm)
BODY	ZAMAK	NICKEL
CENTER CONTACT	BRONZE	GOLD OVER NICKEL
OUTER CONTACT	BRASS	GOLD OVER NICKEL
INSULATOR	PTFE	
TEST PORT	BRASS	GOLD OVER NICKEL
OTHERS PARTS	-	--
-	-	-
-	-	-

Issue : 1227 M

In the effort to improve our products, we reserve the right to make changes judged to be necessary.



'U' LINK FEMALE-FEMALE WITH TEST PORT

R214.791.703

PITCH 12.7

Series : **T43**

PACKAGING

SPECIFICATION

Standard	Unit	Other
50	-	Contact us

ELECTRICAL CHARACTERISTICS

ENVIRONMENTAL

Impedance		75 Ω
Frequency		0-3 GHz
VSWR	NA +	0,0000 x F(GHz) Maxi
Insertion loss		NA √F(GHz) dB Maxi
RF leakage	- (NA - F(GHz)) dB Maxi
Voltage rating		500 Veff Maxi
Dielectric withstanding voltage		1500 Veff mini
Insulation resistance		5000 MΩ mini

Operating temperature	-40/+100 ° C
Hermetic seal	NA Atm.cm3/s
Panel leakage	NA

OTHER CHARACTERISTICS

Assembly instruction

Others :

MECHANICAL CHARACTERISTICS

Center contact retention		
Axial force – Mating end	22	N mini
Axial force – Opposite end	NA	N mini
Torque	NA	N.cm mini
Recommended torque		
Mating	NA	N.cm
Panel nut	NA	N.cm
Mating life	100	Cycles mini
Weight	24,0000	g

Issue : 1227 M

In the effort to improve our products, we reserve the right to make changes judged to be necessary.

RADIALL 