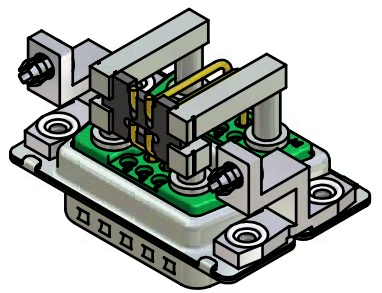


NOTES:

1. METAL SHELLS: STEEL; min. 315µm TIN over 40-80µm NICKEL
2. INSULATORS: HIGH TEMPERATURE PLASTIC UL 94 V-0; GREEN
3. HIGH POWER CONTACTS: COPPER ALLOY; min. 35A/pin @30°C TEMPERATURE RISE
PLATING MATING AREA: 30µm HARD GOLD over min. 50µm NICKEL
PLATING TERMINATION SIDE: 160-240µm TIN over 80µm NICKEL
MALE CONTACT ON POS. A1 and A2
4. SIGNAL CONTACTS: COPPER ALLOY; 5A nominal
PLATING MATING AREA: 30µm HARD GOLD over min. 50µm NICKEL
MALE CONTACTS ON POS. 1 and 2, NO CONTACTS ON POS. 3, 4, 5
5. METAL BRACKET: ZINC DIE CAST; 300µm COPPER/40-120µm NICKEL/120-200µm TIN
6. THREADED INSERT: COPPER ALLOY; min. 200µm TIN over 80µm NICKEL
7. FIXING PLATE: HIGH TEMPERATURE PLASTIC UL 94 V-0, BLACK
8. PCB-SNAP: COPPER ALLOY; min. 200µm TIN over 80µm NICKEL
PCB-HOLE: $\varnothing 3,1 \pm 0,1$ mm; PCB-THICKNESS: 1,6mm
9. MAXIMUM TORQUE VALUE FOR THREAD: 6" LBS
10. CONNECTOR IS PART MARKED: 13-000041 CONEC ABC



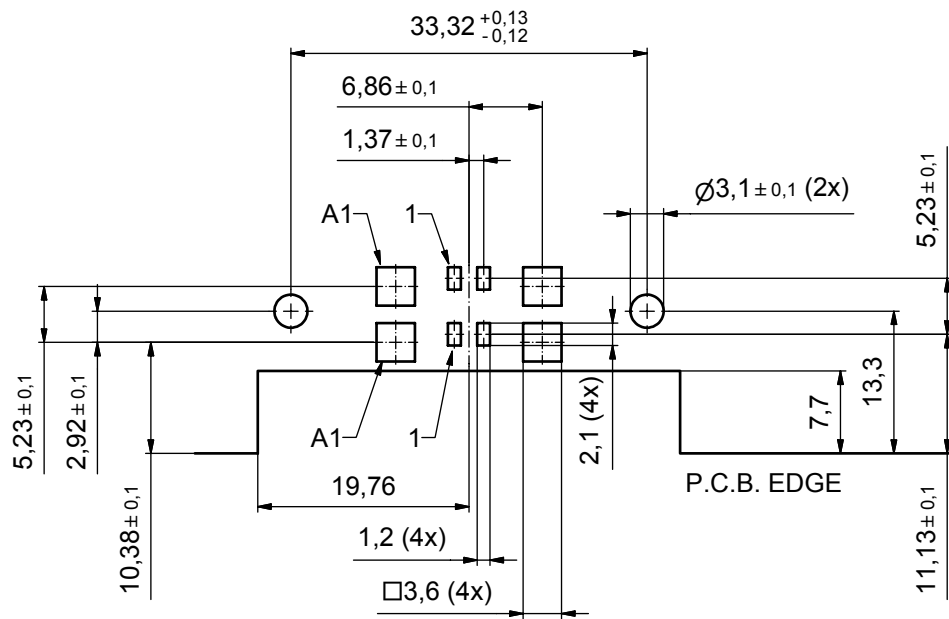
Directive 2002/95/EC
„RoHS“
Compliant

APPROVAL # FREIGABE # DEBLOCAGE # AUTORIZACION # APPROVAL	
CUSTOMER APPROVAL DATE:	
NAME:	TITLE:
COMPANY NAME:	
APPROVAL # FREIGABE # DEBLOCAGE # AUTORIZACION # APPROVAL	

THIS DRAWING MAY NOT BE COPIED OR REPRODUCED IN ANY WAY, AND MAY NOT BE PASSED ON TO A THIRD PARTY WITHOUT WRITTEN PERMISSION. OWNERSHIP AND COPYRIGHT OF CONEC GmbH			
DO NOT ALTER CAD DRAWING BY HAND			
finish:	see notes	tolerance	dim. in mm
rev.	description	date	name

scale: 2:1	
material: see notes	
title: SMD CONNECTOR 90° Male with threaded insert, metal bracket, fixing plate and snap	
dwg no:	Inventor 10
13K1A2095	
part no:	13-000041
DIN-A3	sh: 1





APPROVAL # FREIGABE # DEBLOCAGE # AUTORIZACION # APPROVAL	
CUSTOMER APPROVAL DATE:	
NAME:	TITLE:
COMPANY NAME:	
APPROVAL # FREIGABE # DEBLOCAGE # AUTORIZACION # APPROVAL	

THIS DRAWING MAY NOT BE COPIED OR REPRODUCED IN ANY WAY, AND MAY NOT BE PASSED ON TO A THIRD PARTY WITHOUT WRITTEN PERMISSION. OWNERSHIP AND COPYRIGHT OF CONEC GmbH				DO NOT ALTER CAD DRAWING BY HAND																			
finish:	see sheet 1			tolerance	dim. in mm																		
rev.	description	date	name	drawn	date																		
a	Origin			03.07.07	Lehmenkühler																		
				appd.	03.07.07																		
				norm																			
				d-old																			
				<table border="1"> <tr> <td>scale:</td> <td>2:1</td> </tr> <tr> <td>material:</td> <td>see sheet 1</td> </tr> <tr> <td colspan="2">title:</td> </tr> <tr> <td colspan="2">P.C.B. LAYOUT</td> </tr> <tr> <td colspan="2">SMD Connector 90° Male</td> </tr> <tr> <td colspan="2">with threaded insert, metal bracket, snap</td> </tr> <tr> <td>dwg no:</td> <td>Inventor 10</td> </tr> <tr> <td colspan="2">13K1A2095</td> </tr> <tr> <td>part no:</td> <td>see sheet 1</td> </tr> </table>		scale:	2:1	material:	see sheet 1	title:		P.C.B. LAYOUT		SMD Connector 90° Male		with threaded insert, metal bracket, snap		dwg no:	Inventor 10	13K1A2095		part no:	see sheet 1
				scale:	2:1																		
material:	see sheet 1																						
title:																							
P.C.B. LAYOUT																							
SMD Connector 90° Male																							
with threaded insert, metal bracket, snap																							
dwg no:	Inventor 10																						
13K1A2095																							
part no:	see sheet 1																						
DIN-A3		sh: 2																					