

NOTES:

1. MATERIALS AND FINISHES:

- BODY - BRASS, NICKEL PLATING
- CONTACT - BERYLLIUM COPPER, GOLD PLATING
- INSULATOR - PTFE, NATURAL
- LOCK WASHER & HEX NUT - BRASS, NICKEL PLATING
- O-RING & GASKET - SILICONE RUBBER, RED

2. ELECTRICAL:

- A. IMPEDANCE: 50 OHM
- B. FREQUENCY RANGE: DC-26.5 GHz
- C. VSWR (RETURN LOSS): 1.15 MAX. DC - 12 GHz
1.20 MAX. 12 - 18 GHz
1.30 MAX. 18 - 26.5 GHz
- D. DIELECTRIC WITHSTANDING VOLTAGE: 1000 VRMS, MIN.

3. MECHANICAL:

- A. DURABILITY: 500 CYCLES MIN.
- B. TEMPERATURE RANGE: -65°C TO 165°C
- C. SEALING: MEETS IP67 REQUIREMENTS IN UNMATED CONDITION

4. PACKAGING:

- A. QUANTITY: SINGLE PACK
- B. MARKING: PACKAGING TO BE MARKED "AMPHENOL RF, 901-10814, AND DATE CODE"
- C. HEX NUT, LOCK WASHER AND GASKET ARE PACKAGED LOOSE

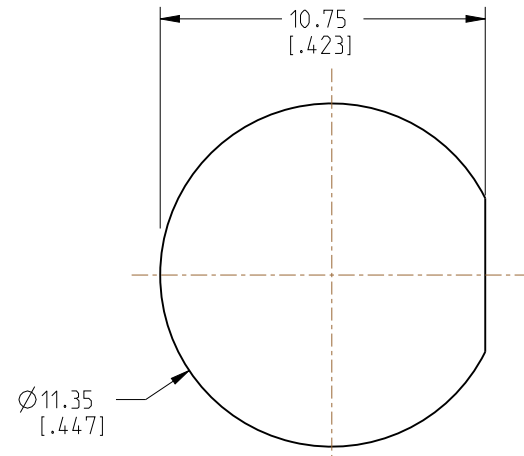
5. CABLE ASSEMBLY INSTRUCTIONS:

- A. TRIM CABLE AS SHOWN.
- B. INSERT CABLE CENTER CONDUCTOR INTO CONNECTOR AND SOLDER BODY TO THE OUTER CONDUCTOR.

6. SHOWS CABLE ENTRY DIMENSIONS.

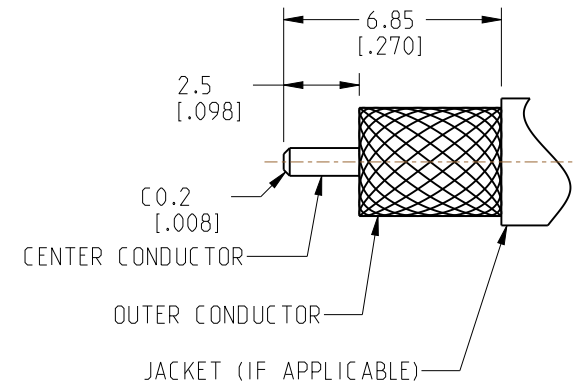
7. MAX. PANEL THICKNESS=3.6 MM

REVISIONS				
REV	DESCRIPTION	DATE	ECN	BY
A	RELEASE TO MFG.	24-NOV-21	16027	SH

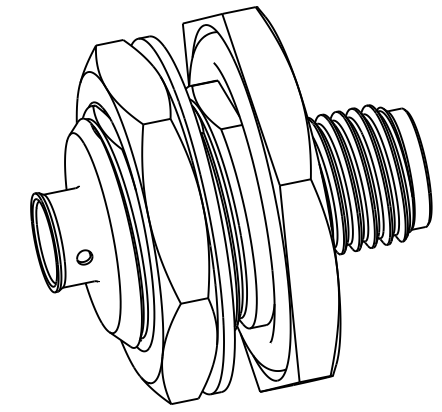


SCALE 4.000

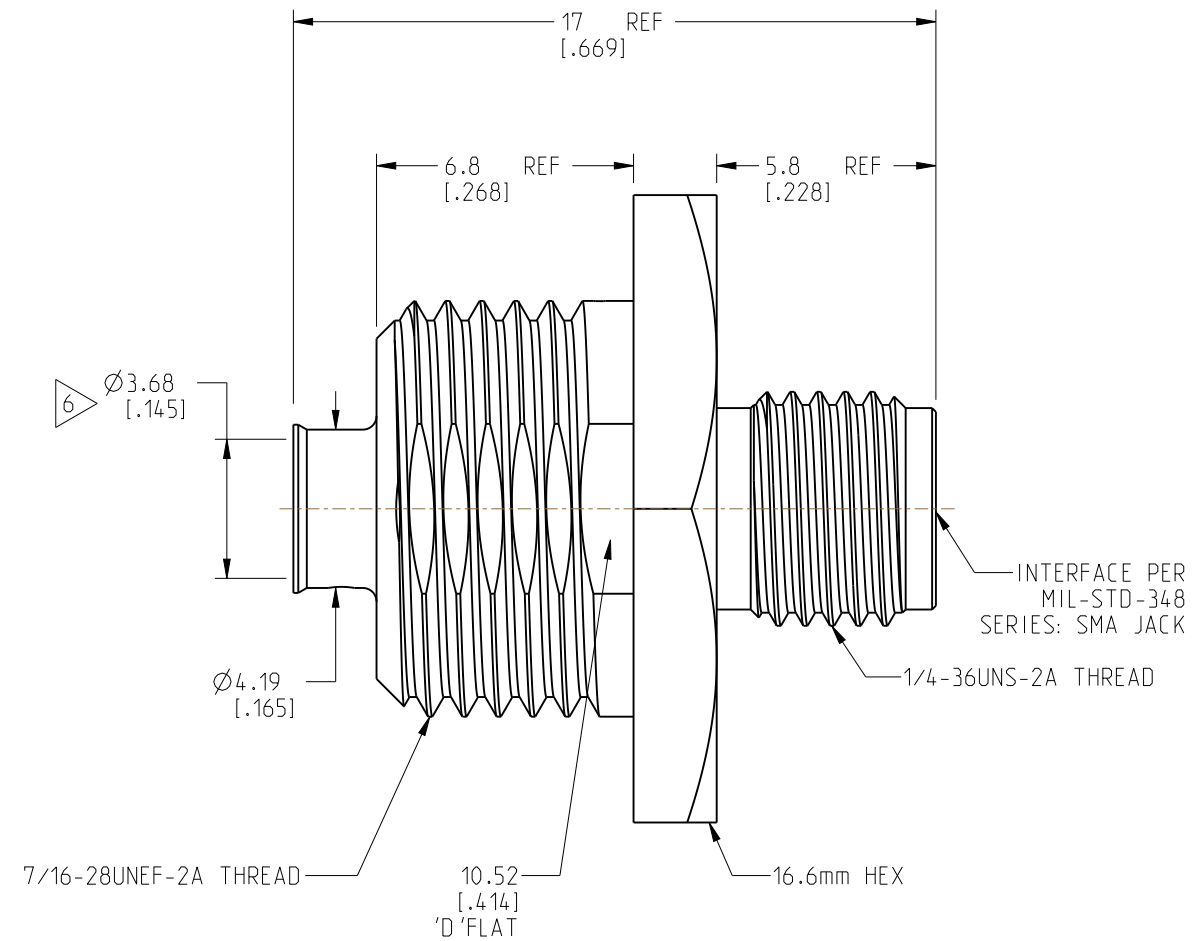
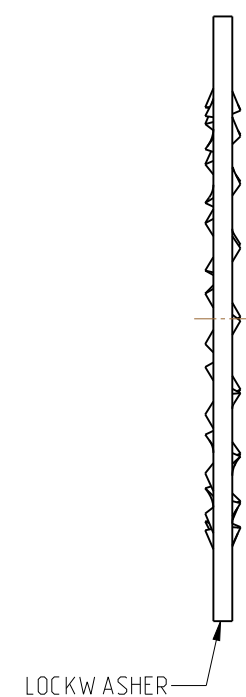
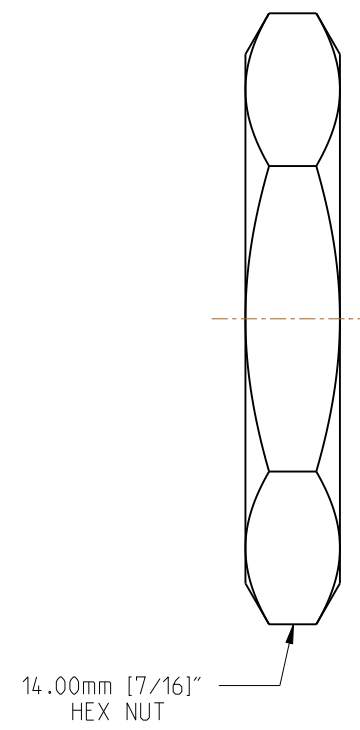
RECOMMENDED MOUNTING HOLE DIMENSIONS



RECOMMENDED CABLE STRIPPING DIMENSIONS



SCALE 3.000



INTERFACE PER MIL-STD-348 SERIES: SMA JACK

1/4-36UNS-2A THREAD

CUSTOMER OUTLINE DRAWING

ALL OTHER SHEETS ARE FOR INTERNAL USE ONLY

<p>NOTICE: These drawings, specifications, or other data (1) are, and remain the property of Amphenol corp. (2) must be returned upon request; and (3) are confidential and not to be disclosed to any person other than those to whom they are given by Amphenol Corp. The furnishing of these drawings, specifications, or other data by Amphenol Corp., or to any other person to anyone for any purpose is not to be regarded by implication or otherwise in any manner licensing, granting rights to permitting such holder or any other person to manufacture, use or sell any product, process or design, patented or otherwise, that may in any way be related to or disclosed by said drawings, specifications, or other data.</p>		<p>UNLESS OTHERWISE SPECIFIED DIMENSIONS ARE METRIC (INCHES) AND TOLERANCES ARE:</p> <p><0.5mm = ±0.05mm [$<0.020 = \pm 0.002$] 0.5 - 6mm = ±0.1mm [$>0.020 - 0.236 = \pm 0.004$] >6.00 - 30mm = ±0.2mm [$>0.236 - 1.181 = \pm 0.008$] >30.00 - 120mm = ±0.3mm [$>1.181 - 4.725 = \pm 0.012$]</p>		<p>MATERIAL</p>		<p>TITLE</p> <p>SMA BHD JACK FRONT MOUNT IP67 FOR RG-402 CABLE</p>		<p>Amphenol RF</p>	
<p>THIRD ANGLE PROJ. </p>		<p>REFERENCE 901-10744</p>		<p>ENGR.1 C.CROTTY</p>		<p>ENGR.2 JACK LIANG</p>		<p>DATE 29-APR-21</p>	
<p>EAR# 10107</p>		<p>ANGLES = ±1°</p>		<p>DATE 29-APR-21</p>		<p>SHEET NO. 2 OF 2</p>		<p>SCALE: 5.0:1.0</p>	
<p>SIZE B</p>		<p>DRAWING NO. 901-10814</p>		<p>ITEM NO. 901-10814</p>		<p>PART NO. 901-10814</p>		<p>REV A</p>	