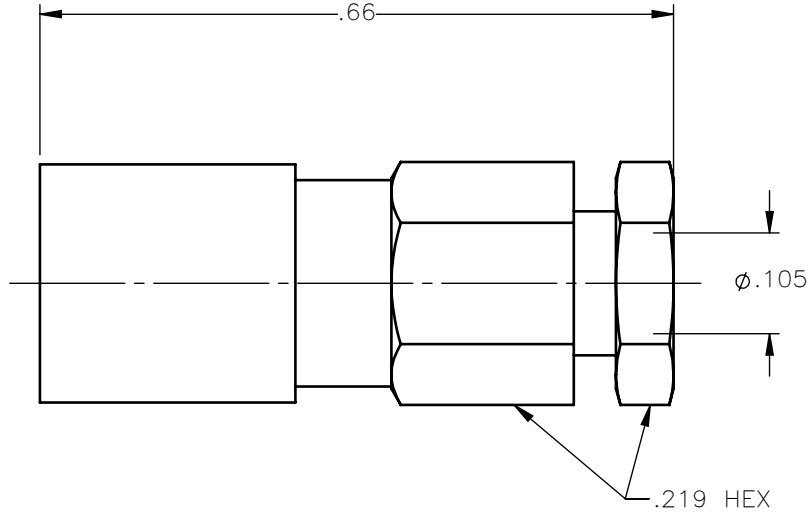


| REVISIONS | | | |
|-----------|-----------------|----------|----------|
| REV. | DESCRIPTION | DATE | APPROVED |
| A | INITIAL RELEASE | 04/09/18 | C.E. |





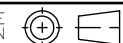
NOTES:

MATERIALS:

1. CONTACT & SPRING = BERYLLIUM COPPER PER ASTM B196, ALLOY C17300, TEMPER TD04.
2. INSULATORS = VIRGIN WHITE TEFLON PER ASTM D1710, GRADE 1, TYPE I, CLASS "B".
3. ALL OTHER METAL PARTS = BRASS PER ASTM B16, ALLOY C36000, TEMPER H02.

FINISHES:

1. SPRING = NICKEL PLATE PER AMS-QQ-N-290, CLASS 1, GRADE G, EXCEPT 100 TO 200 μ in THICK OVER 50 TO 100 μ in THICK COPPER PER AMS 2418.
2. CONTACT = GOLD PLATE PER ASTM B488-11, TYPE II, 50 μ in MIN, GRADE C, OVER 100 TO 200 μ in STRESS FREE SULFAMATE NICKEL PER AMS-QQ-N-290.
3. ALL OTHER METAL PARTS = GOLD PLATE PER ASTM B488-11, TYPE II, 30 μ in MIN, GRADE C OVER 100 TO 200 μ in COPPER STRIKE PER AMS 2418.

| | | | | | |
|---|-----------------------|------------------|---|---|--------------------------|
| UNLESS OTHERWISE SPECIFIED DIMENSIONS ARE IN INCHES TOLERANCES ON | DWN: C.E. | DATE 04/09/18 |  Property of Radiall This document cannot be reproduced or communicated to a third party without prior written permission of RADIALL. |  | |
| | CHKD: D.N. | DATE 04/09/18 | | | |
| DECIMAL | ANGLE | APVD: J.M. | DATE 04/09/18 | SMB STRAIGHT FEMALE PLUG CLAMP TYPE FOR RG-178DS & SIMILAR CABLES | |
| REFERENCE: | MATERIALS & FINISHES: | SIZE A | FSCM NO. 19505 | | DWG NO. 2002-1551-005 |
| ORIGINATED: C.E. DATE: 04/09/18 | SEE NOTES | SCALE 5:1 | THIRD ANGLE PROJECTION |  | SHEET 1 OF 1 |

2002-1551-005