

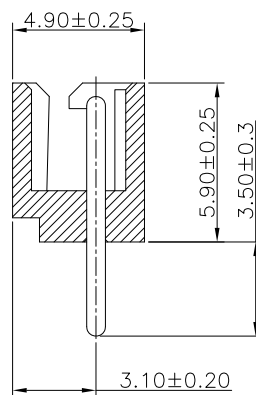
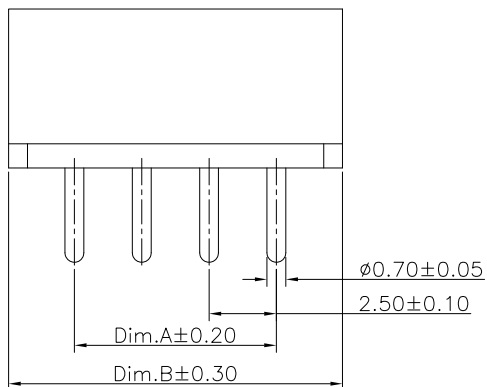
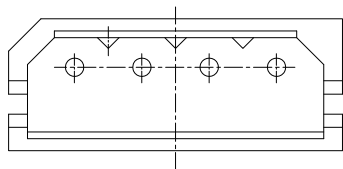
1

2

3

4

5



Specifications:

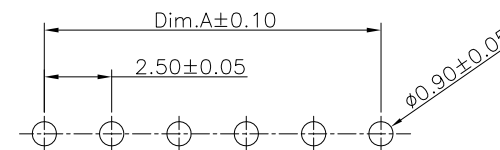
Current Rating:3.0A AC,DC
 Voltage Rating:250V AC,DC
 Contact Resistance:20mohm Max
 Insulation Resistance:1000Mohm Min.
 Withstanding Voltage:1000V AC/minute
 Operating Temperature Range:-40°C~+85°C

Material and Finish

Insulator:Nylon 66 UL94V-0
 Insulator Color:Beige
 Contact:Brass
 Plating:Tin Plated

Dimension:

Circuits	Dim.A	Dim.B	Circuits	Dim.A	Dim.B
2	2.50	7.50	9	20.00	25.00
3	5.00	10.00	10	22.50	27.50
4	7.50	12.50	11	25.00	30.00
5	10.00	15.00	12	27.50	32.50
6	12.50	17.50			
7	15.00	20.00			
8	17.50	22.50			



PCB Layout

RoHS Compliant

DRAWN:

GENERAL TOLERANCE:

.X=±0.20
.XX=±0.15

CnC Tech

Industrial Cable and Connector Technology

CHECKED:

UNIT: MM

DESCRIPTION:

Wire-To Board Wafer,
2.5mm,Straight,Tin Plated,M Series

SIZE

APPROVAL:

SCALE:1:1

PART NO:

52025-XX-0100-01

A4

PROJECTION:

17-Nov-2020

REV

DATE

FILE

BY