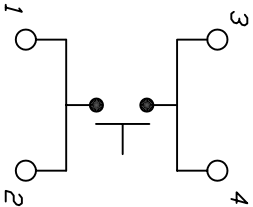
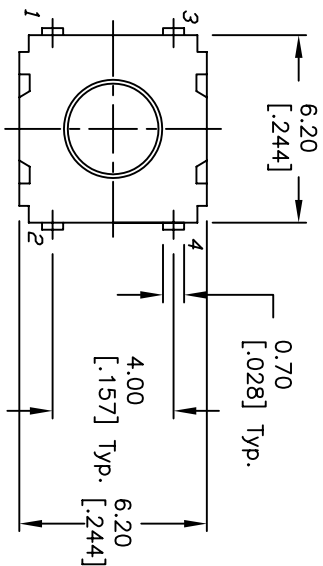


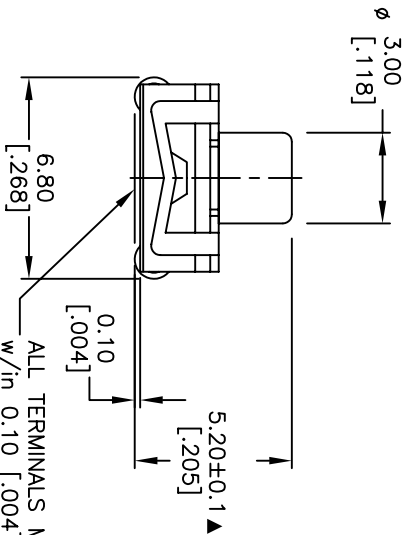
RECOMMENDED P.C.B. LAYOUT



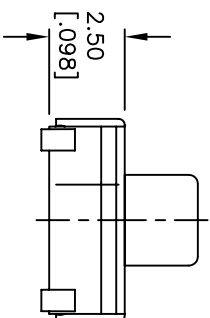
CIRCUIT: SPST
CONTACT CONFIGURATION

NOTES:

1. ALL DIMENSIONS IN MM [INCH]
2. GENERAL TOLERANCE: X.X=±0.4
X.XX=±0.25
3. TERM. NOS. FOR REF. ONLY
4. RATING: 50mA, @12V DC
5. OPERATING FORCE: 200gf
6. TRAVEL: 0.25 +0.2/-0.1mm
7. CONTACT RESISTANCE: 20 MILLIOHMS INITIAL.
8. ELECTRICAL LIFE: 100,000 CYCLES
9. ▲ DENOTES CRITICAL PARAMETER.
10. PACKAGING: TAPE AND REEL.
11. PART TO PASS E-SWITCH SEAL TEST. (B)
12. 2002/95/EC (ROHS) COMPLIANT



ALL TERMINALS MUST BE CO-PLANAR w/in 0.10 [0.004] TOTAL.



E	16822	UPDATED NOTES, REMOVED NOTE	1/3/07	TN
D	15487	REMOVE GOLD DOME INFO	11/2/05	PH
C	15461	GOLD DOME INFO	10/26/05	PH
B	14482	ADD EPOXY NOTE AND NOTE 11	11/10/04	AR
A	13918	RELEASED FOR PRODUCTION	4/15/04	AR
REV.	ECN No.	DESCRIPTION	DATE	CHKD

TITLE				
E-SWITCH®				
TL6304BF200QJ				
SCALE	4:1	DATE	1/3/2007	DR
				TN
				DWG
				D310744
REV	E			

THE INFORMATION CONTAINED IN THIS DOCUMENT IS PROPRIETARY TO E-SWITCH AND IS NOT TO BE COPIED OR TRANSMITTED