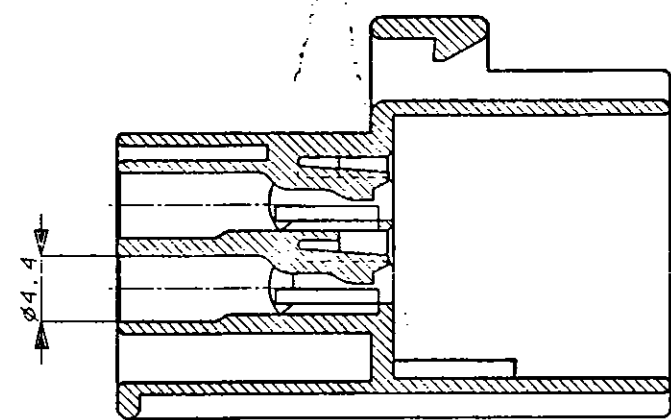
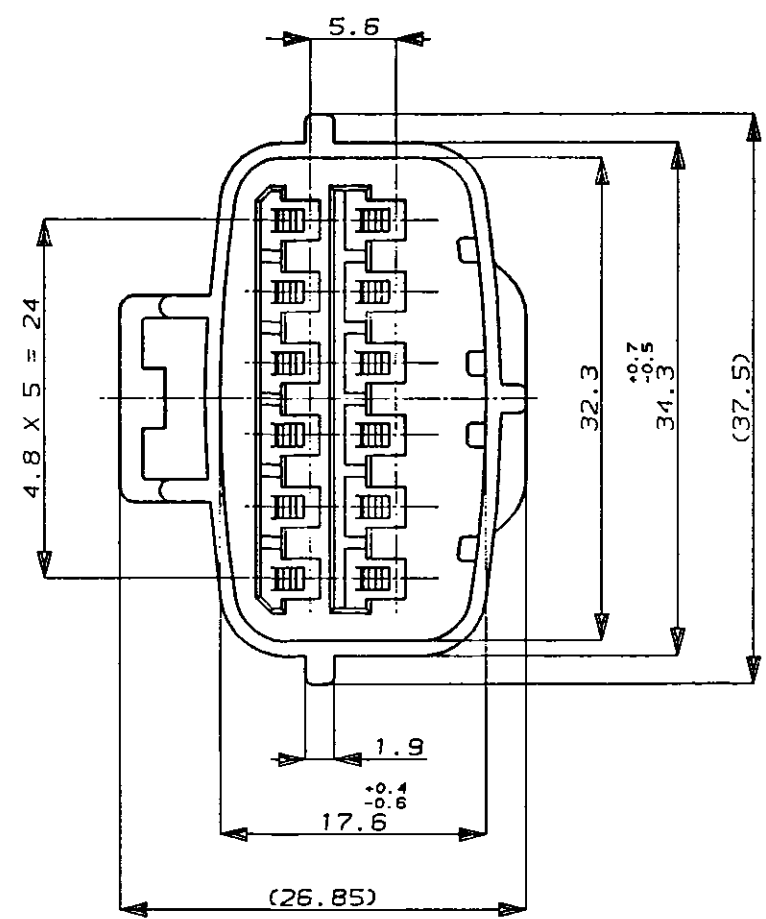
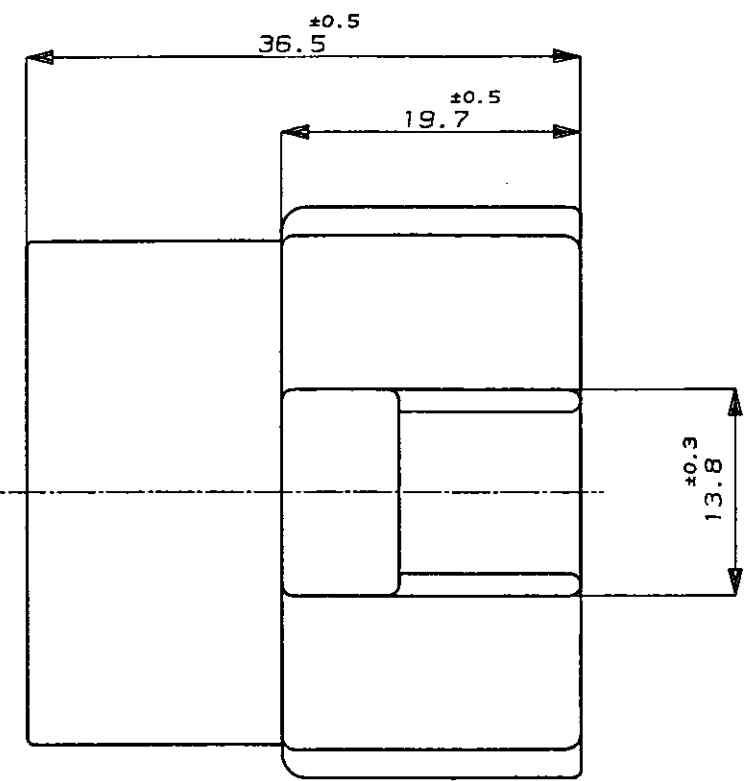
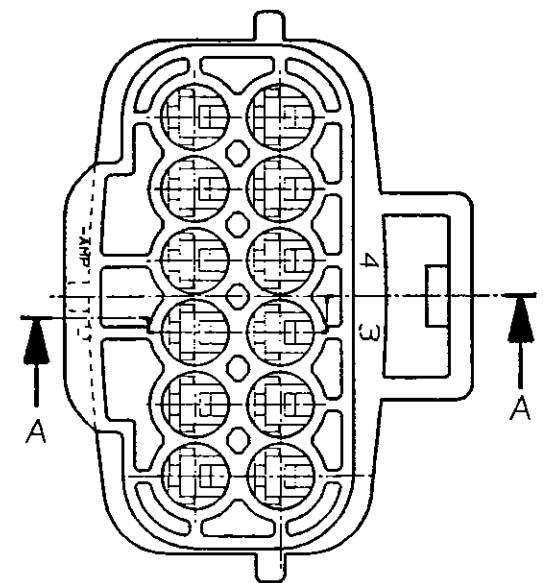


-2 ; 本 ☒
-2 AS SHOWN

NUMBER 174663

3rd ANGLE PROJECTION

METRIC



SECTION 断面 A-A

注 :

- 1 かん合相手型番 ; 174661
- 2 本品はダブルロックプレート P/N 174664 を装着して使用する

NOTE :

- 1 FOR PLUG HOUSING (P/N174661)
- 2 THIS PART MUST BE USED WITH DOBLE LOCK PLATE (P/N174664)

DIMENSIONS IN MILLIMETERS. DO NOT SCALE PRINT

				© 1987 BY AMP (Japan) LTD. ALL RIGHTS RESERVED. AMP PRODUCTS COVERED BY PATENTS AND OR PATENTS PENDING		AMP AMP (JAPAN), LTD. Tokyo, Japan	
				WIRE RANGE		INSULATION DIA	
				mm ² (AWG)		mm	
				MATERIAL		FINISH	
				PBT		BLACK	
				DR. K. Oda 5/26/87		DE. K. Oda 5/26/87	
				CHK. M. Matsuzaka 5/26/87		APP. M. Toruchi 11/4/88	
LTR REVISION RECORD				DR	CHK	DATE	
D 変更 REVISED FJ00-0E26-94 Y7 5/28/87				NAME 12P. ECONOSEAL J-MARK II+ CONNECTOR			
C 変更 REVISED J-12311 KO SI 1/29/90				12極 エコノシール J マーク II+ CAP HOUSING			
B 変更 REVISED J-10987 TS MO 11/16/89				キャップハウジング			
A 変更 REVISED J-10135 TS MT 5/22/85				GENERAL TOLERANCE		SIZE	LOC NUMBER
O 作成 RELEASED YF TS MT 11/4/86				0 <= < 10 : ±0.2 10 <= < 30 : ±0.25 30 <= < 100 : ±0.3 ANGLES : ±3°		B J	174663
				SCALE 2:1		REV. D	SHEET 1 OF 1

CUSTOMER DRAWING