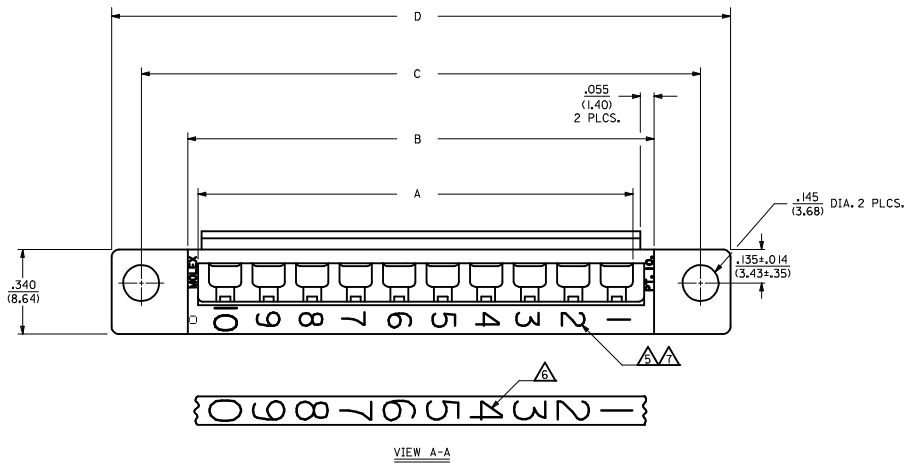
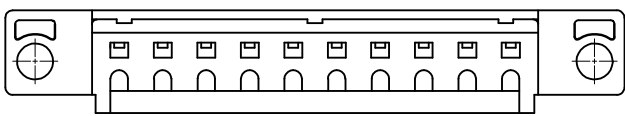
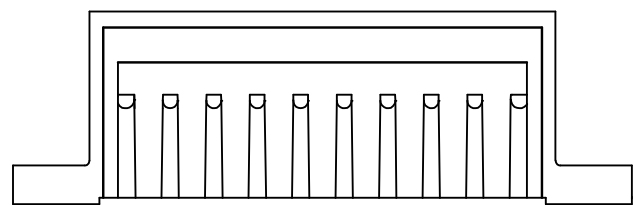
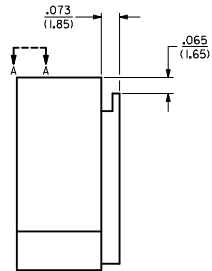
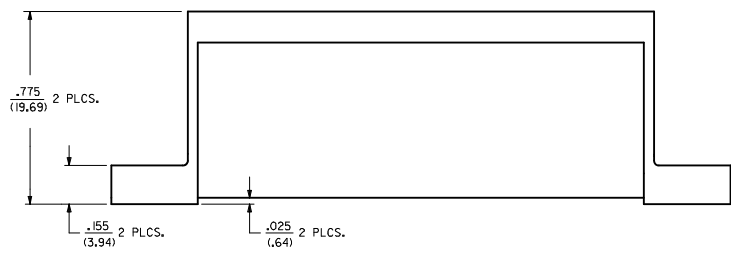


- NOTES:**
- ▲ THESE HOUSINGS ARE FOR USE WITH THE 1457-•• TERMINALS AND MAY BE SUBDIVIDED BY USING THE 1461-K KEY.
 - ▲ THE HOUSINGS ARE ONLY AVAILABLE IN 5, 10, 15, AND 20 CIRCUIT SIZES.
 - ▲ PRODUCT SPECIFICATION PS 50-36 APPLIES.
 - ▲ THESE HOUSINGS CONFORM TO U.L. AND C.S.A. REQUIREMENTS.
 - ▲ .060/(1.52) HIGH RAISED NUMERALS.
 - ▲ .125/(3.18) HIGH RECESSED NUMERALS ON A MATTE BACKGROUND.
 - ▲ .09/(2.3) HIGH INK STAMPED NUMERALS.
8. PACKAGE PER PK-1461-100.



VIEW A-A



4	01
3	0
2	01
1	0
SHT REV	

MODIFY CORE OUTS IEC NO. UCF2005-2756 DRWN:SBARRA 2005/09/29 CHYK:BARBER 2005/10/10 APPR:SMILLER 2005/10/12	QUALITY SYMBOLS ▽=0 ▽=0	GENERAL TOLERANCES (UNLESS SPECIFIED)		DIMENSION STYLE IN/MM	SCALE 4:1	DESIGN UNITS INCH	THIRD ANGLE PROJECTION		
		4 PLACES ± --- ± --- 3 PLACES ± --- ± .010 2 PLACES ± 0.25 ± .014 1 PLACE ± 0.35 ± ---	DRAWN BY AFG 91/02/18	CHECKED BY RHR 91/02/18	APPROVED BY GWF 91/02/18	MATERIAL NO. SEE TABLE	DOCUMENT NO. SD-1461-*	TITLE HOUSING, COMMONING [.025/(.64) OFFSET]	MOLEX INCORPORATED
		DRAFT WHERE APPLICABLE MUST REMAIN WITHIN DIMENSIONS	SIZE D	THIS DRAWING CONTAINS INFORMATION THAT IS PROPRIETARY TO MOLEX INCORPORATED AND SHOULD NOT BE USED WITHOUT WRITTEN PERMISSION					
								SHEET NO. 1 OF 4	

PART NO.	ENG. NO.	NO. CKTS.	DIM. A	DIM. B	DIM. C	DIM. D
07-01-7201	1461-20	20	3.50 (88.9)	3.63 (92.2)	4.00 (101.6)	4.24 (107.7)
07-01-7151	1461-15	15	2.62 (66.5)	2.75 (69.9)	3.13 (79.5)	3.37 (85.6)
07-01-7101	1461-10	10	1.750 (44.45)	1.875 (47.63)	2.250 (57.15)	2.49 (63.2)
07-01-7051	1461-5	5	.875 (22.23)	1.000 (25.40)	1.375 (34.93)	1.615 (41.02)

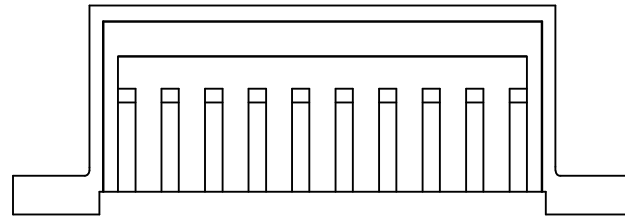
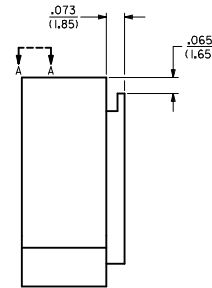
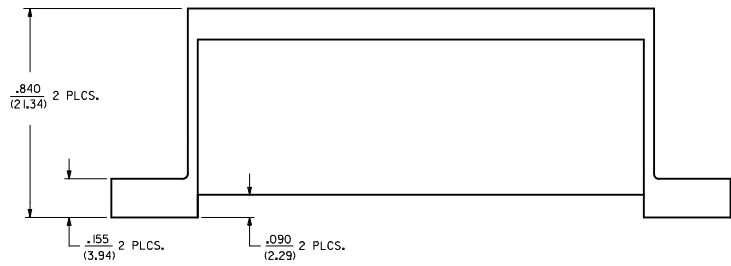
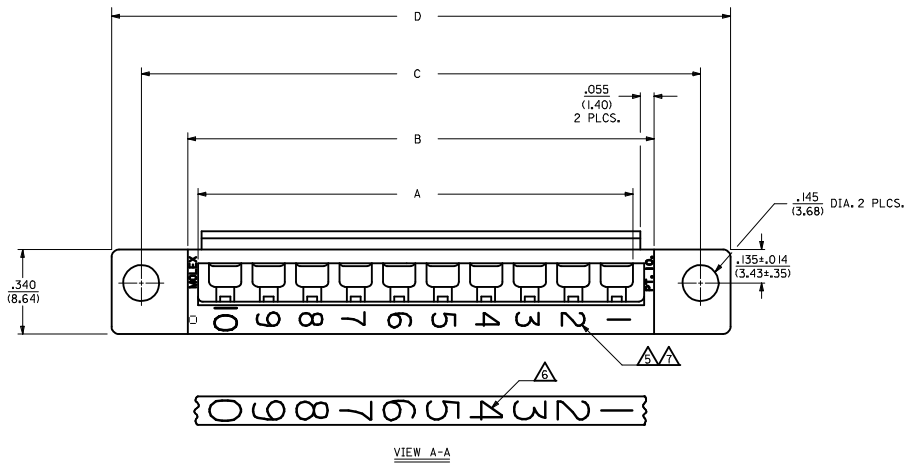
SPECIAL NUMBERED HOUSINGS CHART			
PART NO.	ENG. NO.	NO. CKTS.	CIRCUIT NUMERALS
07-01-7102	1461-10-1	10	11 THRU 20
07-01-7103	1461-10-2	10	21 THRU 30
07-01-7104	1461-10-3	10	31 THRU 40
07-01-7152	1461-15-1	15	16 THRU 30
07-01-7153	1461-15-2	15	31 THRU 45
07-01-7154	1461-15-3	15	46 THRU 60
07-01-7202	1461-20-1	20	21 THRU 40
07-01-7203	1461-20-2	20	41 THRU 60
07-01-7204	1461-20-3	20	61 THRU 80

INK STAMPED HOUSINGS								
BEFORE INK STAMP		AFTER INK STAMP		NO. CKTS.	DIM. A	DIM. B	DIM. C	DIM. D
PART NO.	ENG. NO.	PART NO.	ENG. NO.					
007-01-7206	1461-20B	007-01-7207	1461-20C	20	3.50 (88.9)	3.63 (92.2)	4.00 (101.6)	4.24 (107.7)
007-01-7156	1461-15B	007-01-7157	1461-15C	15	2.62 (66.5)	2.75 (69.9)	3.13 (79.5)	3.37 (85.6)
007-01-7106	1461-10B	007-01-7107	1461-10C	10	1.750 (44.45)	1.875 (47.63)	2.250 (57.15)	2.49 (63.2)
007-01-7056	1461-5B	007-01-7057	1461-5C	5	.875 (22.23)	1.000 (25.40)	1.375 (34.93)	1.615 (41.02)

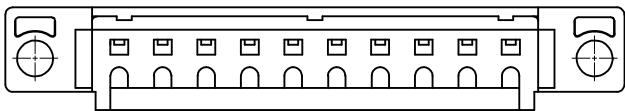
SPECIAL INK STAMPED HOUSINGS CHART					
BEFORE INK STAMP		AFTER INK STAMP		NO. CKTS.	CIRCUIT NUMERALS
PART NO.	ENG. NO.	PART NO.	ENG. NO.		
007-01-7106	1461-10B	007-01-7108	1461-10-1C	10	11 THRU 20
		007-01-7109	1461-10-2C	10	21 THRU 30
		007-01-7100	1461-10-3C	10	31 THRU 40
007-01-7156	1461-15B	007-01-7158	1461-15-1C	15	16 THRU 30
		007-01-7159	1461-15-2C	15	31 THRU 45
		007-01-7160	1461-15-3C	15	46 THRU 60
007-01-7206	1461-20B	007-01-7208	1461-20-1C	20	21 THRU 40
		007-01-7209	1461-20-2C	20	41 THRU 60
		007-01-7200	1461-20-3C	20	61 THRU 80

DIMENSIONS SHOWN IN METRIC INCH		TITLE		REVISE ONLY ON CAD SYSTEM																	
<table border="1"> <tr> <th>TYPE</th> <th>DATE</th> <th>BY</th> <th>REVISION</th> </tr> <tr> <td>1</td> <td>03/15</td> <td></td> <td></td> </tr> <tr> <td>2</td> <td>03/14</td> <td></td> <td></td> </tr> <tr> <td>3</td> <td>03/15</td> <td></td> <td></td> </tr> </table>		TYPE	DATE	BY	REVISION	1	03/15			2	03/14			3	03/15			HOUSING, COMMONING (.025/ (.64) OFFSET)		SHEET NO. 2 OF 2 DATE 03/22/91	
TYPE	DATE	BY	REVISION																		
1	03/15																				
2	03/14																				
3	03/15																				
MOLEX INCORPORATED 1000 W. 10TH AVENUE DENVER, CO 80202		SEE CHART SD-1461-		THE ABOVE DIMENSIONS ARE FOR THE PARTS LISTED IN THE DRAWING.																	
LTR.	REVISIONS	LTR.	REVISIONS	LTR.	REVISIONS																
	01 SEE SHEET 1																				

- NOTES:**
- ▲ THESE HOUSINGS ARE FOR USE WITH THE 1457-•• TERMINALS AND MAY BE SUBDIVIDED BY USING THE 1461-K KEY.
 - ▲ THE HOUSINGS ARE ONLY AVAILABLE IN 5, 10, 15, AND 20 CIRCUIT SIZES.
 - ▲ PRODUCT SPECIFICATION PS 50-36 APPLIES.
 - ▲ THESE HOUSINGS CONFORM TO U.L. AND C.S.A. REQUIREMENTS.
 - ▲ .060/(1.52) HIGH RAISED NUMERALS.
 - ▲ .125/(3.18) HIGH RECESSED NUMERALS ON A MATTE BACKGROUND.
 - ▲ .09/(2.3) HIGH INK STAMPED NUMERALS.



MATERIAL:
 POLYESTER, UNFILLED, 94V-0.
 COLOR: BLACK.
 (REF.: SMES 128C-D)



MODIFY COUR OUTS IEC NO. UCF2005-2756 DRAWN BY: DRWINIS/BARRA 2005/09/29 CHECKED BY: CHYK/BARKER 2005/10/10 APPR: SMILLER 2005/10/12 REV DESCRIPTION	QUALITY SYMBOLS ▽=0 ▽=0		GENERAL TOLERANCES (UNLESS SPECIFIED) mm INCH 4 PLACES ± --- ± --- 3 PLACES ± --- ± .010 2 PLACES ± 0.25 ± .014 1 PLACE ± 0.35 ± --- ANGULAR ±1/2°		DIMENSION STYLE IN/MM DRAWN BY DATE AFG 95/12/18 CHECKED BY DATE RHR 95/12/18 APPROVED BY DATE GWF 95/12/18		SCALE 4:1 DESIGN UNITS INCH THIRD ANGLE PROJECTION		TITLE HOUSING, COMMONING [.090/(2.29) OFFSET]	
	DRAFT WHERE APPLICABLE MUST REMAIN WITHIN DIMENSIONS		MATERIAL NO. SEE TABLE		DOCUMENT NO. SD-1461-*		MOLEX INCORPORATED		SHEET NO. 3 OF 4	
	THIS DRAWING CONTAINS INFORMATION THAT IS PROPRIETARY TO MOLEX INCORPORATED AND SHOULD NOT BE USED WITHOUT WRITTEN PERMISSION									
	SIZE D									