

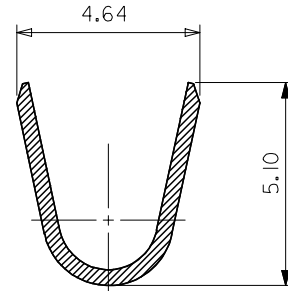
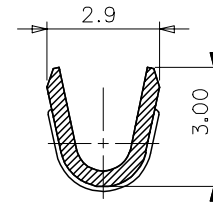
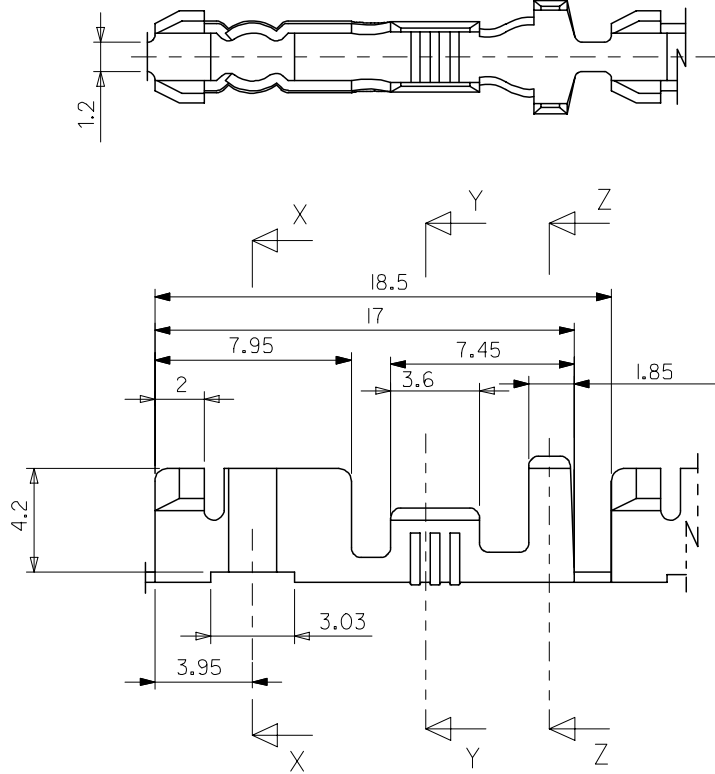
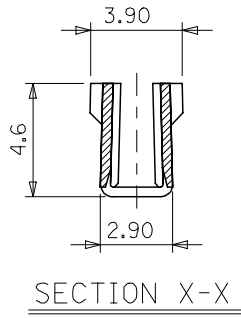
DO NOT SCALE DRAWING  
DIMENSION IN METRIC

DWG. IO.  
SD-57920-001

SIMILAR ITEM

PROJECT NO.

MATERIAL NO.	ENGINEERING NO.
579206002	57920-6002



- NOTES
1. MATERIALS : PHOSPHOR BRONZE, 0.4mm THICK
  2. FINISH : TIN-PLATING
  3. APPLICABLE WIRE : AWG#18-16

NEW RELEASED EC NO. KOR2002-0093 DRWN: C.B.CHIN 02/03/21 CHK: W.Y.YANG APPR: C.W.LEE	QUALITY SYMBOLS MAJOR = 0 CRITICAL = 0	GENERAL TOLERANCES: (UNLESS SPECIFIED)		SCALE 5:1	DESIGN UNITS <input checked="" type="checkbox"/> mm <input type="checkbox"/> INCH	THIRD ANGLE PROJECTION	DIMENSIONS: <input type="checkbox"/> mm <input type="checkbox"/> INCH <input checked="" type="checkbox"/> mm ONLY	SHT	REV
		4 PLACES	±0.	±.	DRAWN BY & DATE W.Y.YANG 99/11/13	TITLE: CLUSTER TERMINAL (2.29 DIA. PIN)			
A	DESCRIPTION	3 PLACES	±0.25	±.	CHECKED BY & DATE B.K.CHOI 99/11/13	MATERIAL NO. SEE CHART			
		1 PLACE	±0.25	±.	APPROVED BY & DATE C.W.LEE 99/11/13	DRAWING NO. SD-57920-001			
DRAFT WHERE APPLICABLE MUST REMAIN WITHIN DIMENSIONS		ANGULAR: ± °		CAD FILENAME S57920.dgn	MATERIAL NO. SEE CHART		DRAWING NO. SD-57920-001		SHEET NO. 10F1
THIS DRAWING CONTAINS INFORMATION THAT IS PROPRIETARY TO MOLEX INCORPORATED AND SHOULD NOT BE USED WITHOUT WRITTEN PERMISSION.								SIZE B	

MX-A3