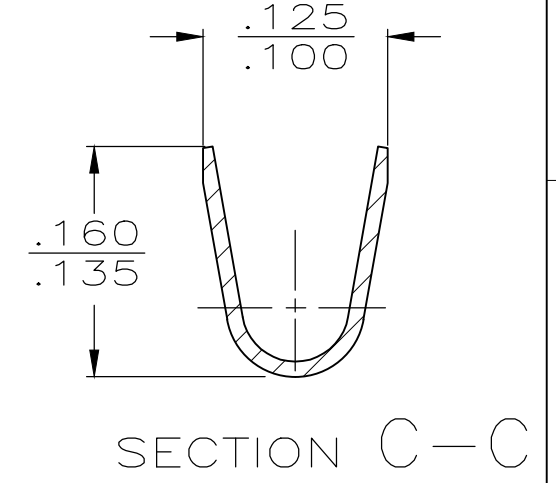
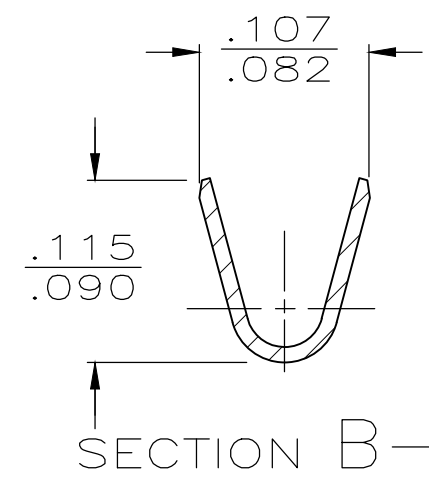
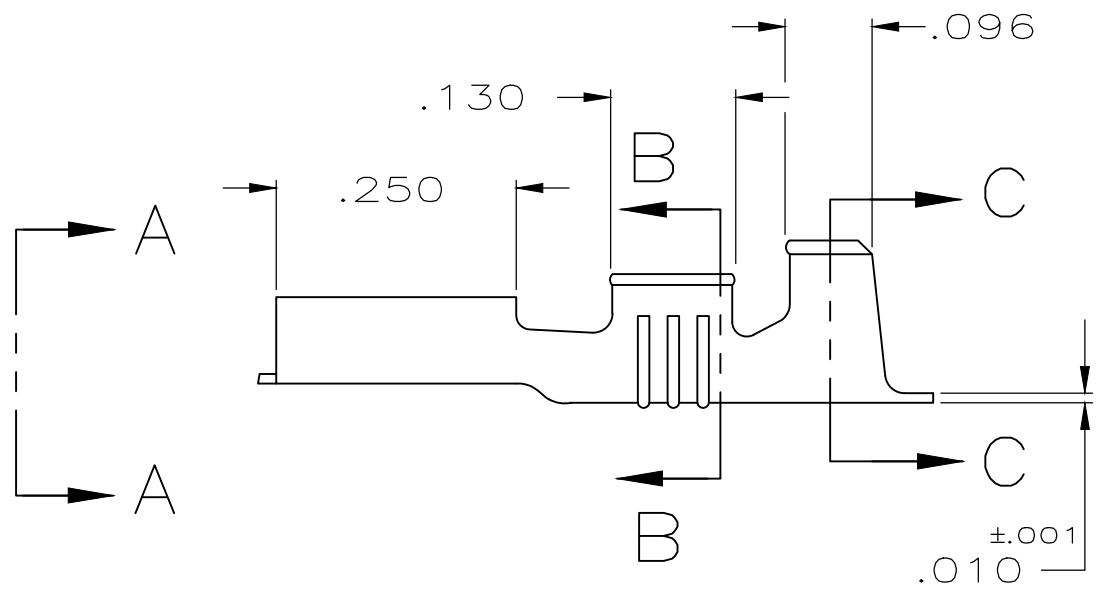
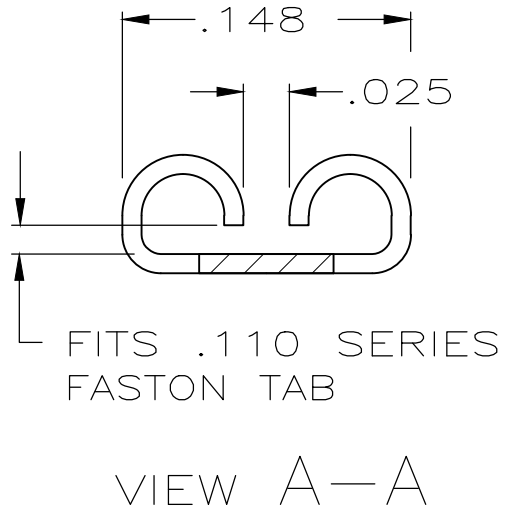
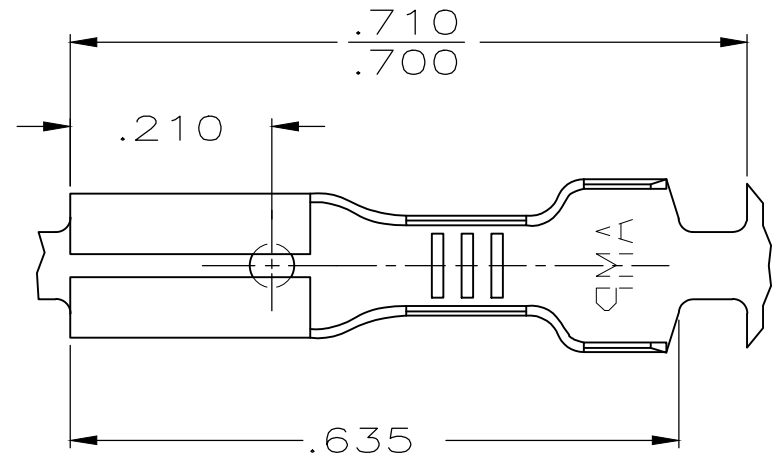


THIS DRAWING IS UNPUBLISHED. RELEASED FOR PUBLICATION  
 © COPYRIGHT - By - ALL RIGHTS RESERVED.

LOC	DIST	REVISIONS			
P	LTR	DESCRIPTION	DATE	DWN	APVD
AF	50	AS3	REVISED PER ECR-18-013918	27SEP2018	BDA DH

- 1 CONTINUOUS STRIP ON REELS.
- 2 MATING TAB THK IS .012±.001.
- 3 WIRE SIZE IS #22-#18 AWG.
- 4 INSULATION RANGE IS .060-.100 DIA
- 5 REELED ON PLASTIC REELS.
- 6 PLATING THICKNESS: .00023 INCH MIN
- 7 SAME AS -1 BUT WITH PAPER INTERLEAVE.



FINISH	MATERIAL	PART NUMBER
TIN PLATING	BRASS	60415-6
NICKEL PLATING	BRASS	60415-5
-	BRASS	60415-4
TIN PLATING	BRASS	60415-2
TIN PLATING	BRASS	60415-1

THIS DRAWING IS A CONTROLLED DOCUMENT.		DWN JR RUTH 6/23/87	<b>STE</b> TE Connectivity	
DIMENSIONS: INCHES		CHK G YETTER 6/23/87		
TOLERANCES UNLESS OTHERWISE SPECIFIED:		APVD C MEYERS 6/23/87	NAME RECEPTACLE, FASTON,™ .110 SERIES	
0 PLC ± -		PRODUCT SPEC	SIZE CAGE CODE DRAWING NO RESTRICTED TO	
1 PLC ± -		-	A3 00779 C-60415	
2 PLC ± -		APPLICATION SPEC	SCALE 5:1 SHEET 1 OF 1 REV AS3	
3 PLC ± .015		-		
4 PLC ± -		WEIGHT 0.244		
ANGLES ± -		CUSTOMER DRAWING		
MATERIAL BRASS	FINISH PRE-TIN			