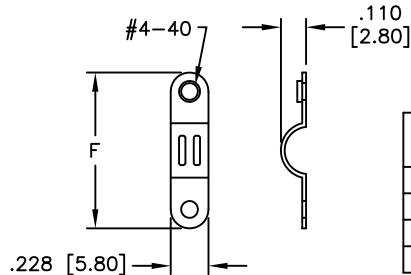
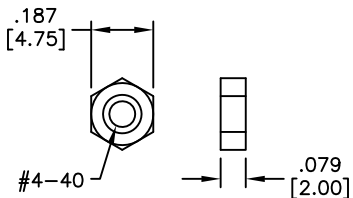
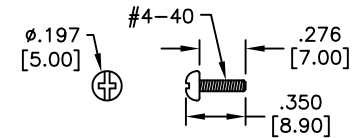
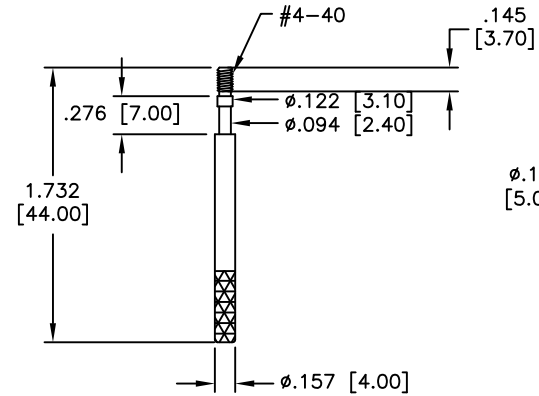
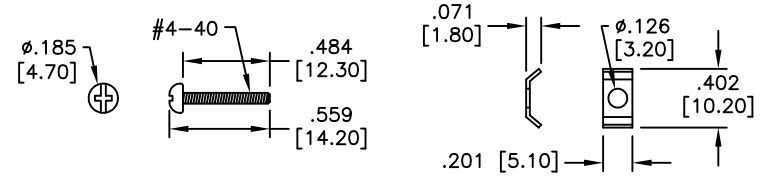
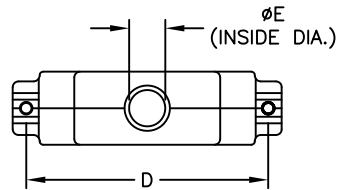
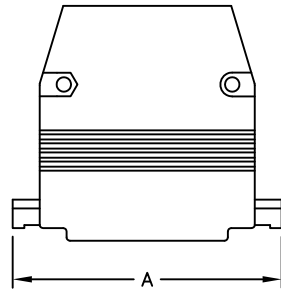
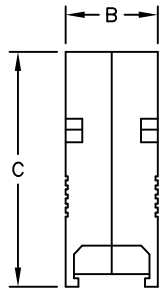


APPROVED: _____
 DATE: _____ TITLE: _____

Rev	AWO #	Description	Date	Appr
-		RELEASED	6/14/05	
A		ADDED THREAD LENGTH	1/24/11	
B		ADDED CABLE ENTRY DIA	2/3/11	
C		ADDED DIM.	6/29/16	AY/IC



DXXX	DIMENSIONS							
	A	B	C	D	ϕE	F		
DE09	1.220 [31.00]	.614 [15.60]	1.850 [47.00]	.980 [24.90]	.275 [7.00]	.559 [14.20]		
DA15	1.575 [40.00]	.630 [16.00]	1.898 [48.20]	1.307 [33.20]	.389 [9.90]	.756 [19.20]		
DB25	2.098 [53.30]	.630 [16.00]	1.917 [48.70]	1.850 [47.00]	.393 [10.00]	1.047 [26.60]		
DC37	2.717 [69.00]	.638 [16.20]	1.913 [48.60]	2.500 [63.50]	.551 [14.00]	1.047 [26.60]		

SPECIFICATIONS:

Material:
 Hood: Aluminum Die Cast
 Finish: Chromate plated
 Hardware: Copper Alloy, Nickel plated
 Environmental:
 Lead free, RoHS compliant
 Agency Certifications:
 cUL, Adam Tech file #E224053



UNLESS OTHERWISE SPECIFIED
 ALL DIMENSIONS ARE INCHES [MM]
 TOLERANCES: EXCEPT AS NOTED
 INCHES HOLES
 .X ± .10 ϕ .X ± .10
 .XX ± .020 ϕ .XX ± .015
 .XXX ± .015 ϕ .XXX ± .010

ADAM TECH

909 Rahway Avenue, Union, NJ 07083
 Phone: 908-687-5000 Fax: 908-687-5710

APPROVALS		DATE
DRAWN	SS	6/14/05
CHECKED		
APPROVED		

TITLE		
D-SUB HOOD, ALUMINUM DIE CAST, THUMB SCREWS		
SIZE	PART NO.	REV.
X	DXXX-HD-AL-TS	C
REF:	SCALE: NTS	SHEET 1 OF 1