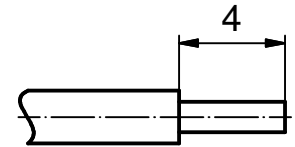


STRIPPING DIMENSION (b)



Part-no. as per finish			
(b) GOLD FLASH over NICKEL (c)	min. 20µin HARD GOLD over min. 50µin NICKEL	min. 30µin HARD GOLD over min. 50µin NICKEL	min. 50µin HARD GOLD over min. 50µin NICKEL
162A18709X	162B18709X	162C18709X	162J18709X

- (b) NOTES:
1. Material: Copper alloy
  2. Finish: See table
  3. Temperature range: -55 °C to +125 °C
  4. Rated current: 7.5 A maximum
  5. Contact resistance: <= 10 mOhm
  6. Crimping: Use crimp tool 360X10329X  
With tool insert 360X20069X  
Selector settings: 7 for AWG 20  
6 for AWG 22  
5 for AWG 24

Directive 2002/95/EC RoHS compliant

THIS DRAWING MAY NOT BE COPIED OR REPRODUCED IN ANY WAY, AND MAY NOT BE PASSED ON TO A THIRD PARTY WITHOUT WRITTEN PERMISSION. OWNERSHIP AND COPYRIGHT OF CONEC GmbH

DO NOT ALTER CAD DRAWING BY HAND				tolerance DIN ISO 2768-m		dim. in mm	
				date	name		
				drawn	25.03.03	Parei	
				appd.	25.03.03	Kühle	
3 x d	Ä5346	17.09.2014	K.H.	norm			
1 x c	Ä 4116	26.09.11	Lehm.	d-old			
4 x b	Ä 3698	25.08.10	Lehm.				
a	Original						
rev.	description	date	name				

scale:	5:1		
material:	SEE NOTES		
title:	<b>CRIMP SOCKET CONTACT</b> screw machined version accepts cable AWG 24-20		
dwg no:	Inventor 10	DIN-A4	
	16K1A929	sh: 1	
part no:	SEE TABLE		