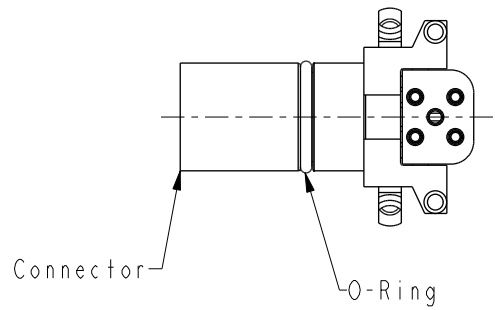
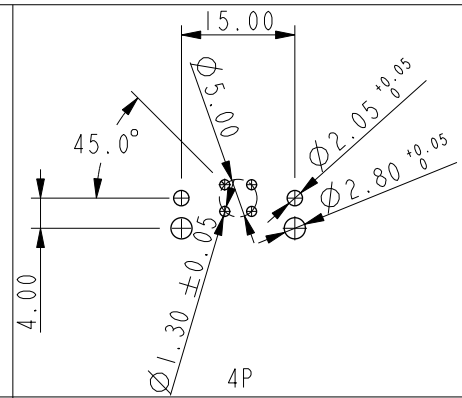
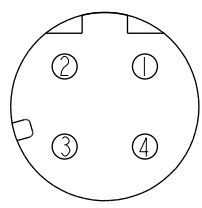
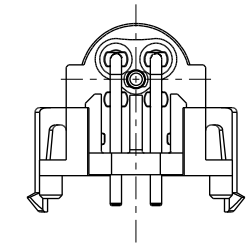
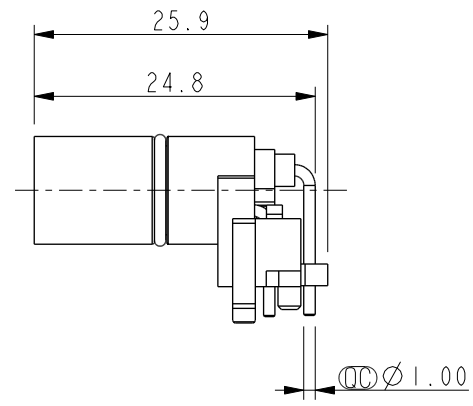
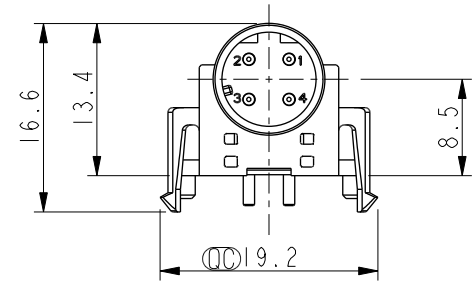
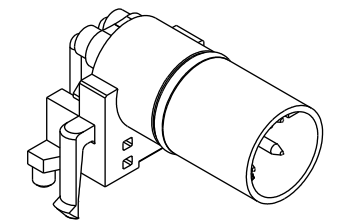
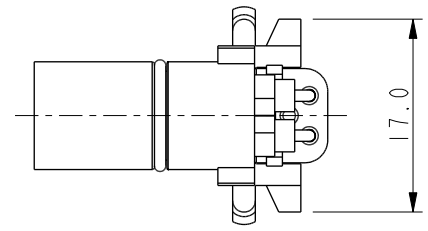


THIS DOCUMENT IS SUBJECT TO CHANGE WITHOUT NOTICE. IT IS CONFIDENTIAL AND A PROPERTY OF AMPHENOL LTW. DISCLOSURE TO THIRD PARTY HAS TO BE AUTHORIZED BY AMPHENOL LTW.

REV.	ECN NO.	DATE	SIGN	DESCRIPTION
A		2022-01-20	Jiahe Lin	Rev.01 To Rev.A

M12D-XXPMMR-EE0001
 XX: No. Of Pin



Note:
 * RoHS Compliant
 * \varnothing Important dimension
 * Waterproof rate: Non-Waterproof
 * Connector
 Housing: Thermoplastic, Black
 Pin: Copper alloy, Gold plated
 O-Ring: Rubber, Black
 * For pcb thickness max: 1.6mm

Pin Assignment
Front View

Recommended PCB Layout

UNIT:mm		TITLE		ITEM NO		DRAWN BY		DATE		
		N SEN, M12 D, RECEPTACLE, M, M, PCB R		M12D-XXPMMR-EE0001		Jiahe Lin		2022-01-20		
		SCALE	SIZE	SHEET	OF	CHECKED BY	DATE		DATE	
		3:2	A4	1	1	Allen Pan	2022-01-20		2022-01-20	
TOLERANCE		REV.	WC-REV.	CUSTUMER		APPROVED BY		DATE		
.X ±0.25		A	A.1	ALTW		Fred Lee		2022-01-20		
.XX ±0.1		\varnothing : Inspection item								
.XXX ±0.05										
ANGLES ±1°										

Amphenol LTW
 安費諾亮泰企業股份有限公司