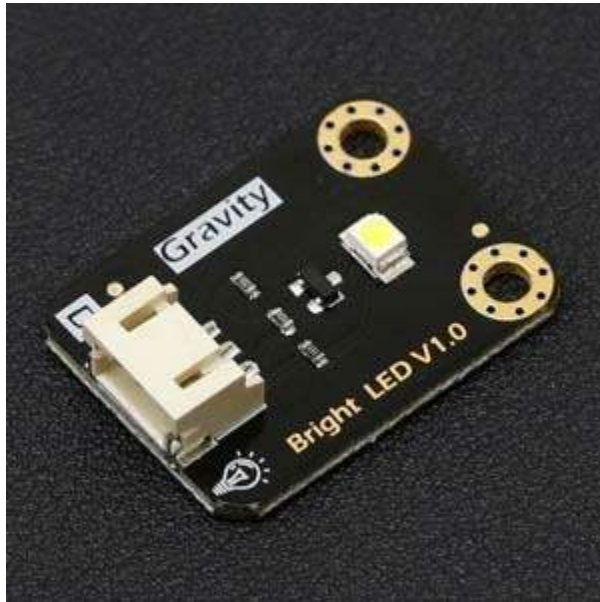




Bright LED Module SKU: DFR0438



Bright LED Module SKU: DFR0438

Contents

- [1 Introduction](#)
- [2 Specification](#)
- [3 Board Overview](#)
- [4 Tutorial](#)
 - [4.1 Requirements](#)
 - [4.2 Connection Diagram](#)
 - [4.3 Sample Code](#)
 - [4.4 Result](#)

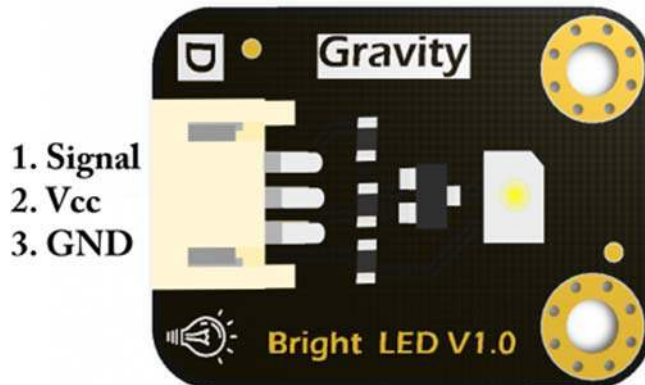
Introduction

The Bright LED module is designed for some special application. It's using a very bright LED component as its light source. Compatible with DFRobot gravity 3-Pin interface, plug and play. What you need is just a digital signal, you can drive it directly. Besides, the LED is so bright that do not look directly at the light.

Specification

- Operating Voltage: 5VDC
- Operating Current: 20mA (Max)
- Dimension: 30*22(mm)/1.18*0.86 (in)

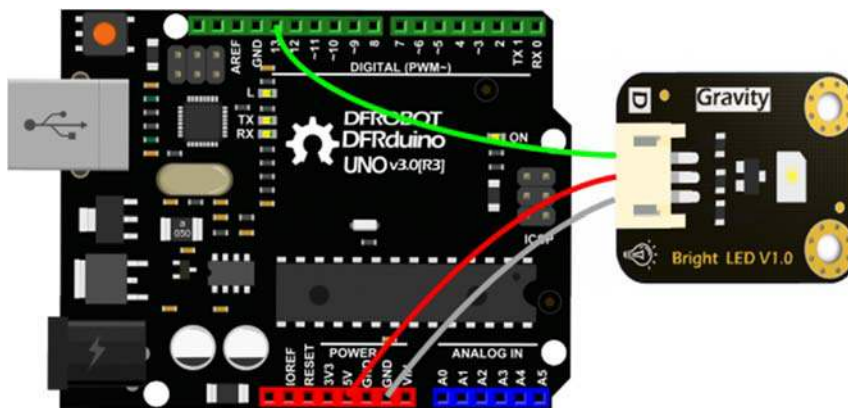
Board Overview



Tutorial

Requirements

- **Hardware**
 - UNO x1
 - Bright LED Module x1
 - Some wires
- **Software**
 - Arduino IDE Click to Download Arduino IDE from Arduino®
<https://www.arduino.cc/en/Main/Software> Connection Diagram



Sample Code

```
void setup() {
  // initialize digital pin 13 as an output.
  pinMode(13, OUTPUT);
}

// the loop function runs over and over again forever
void loop() {
  digitalWrite(13, HIGH); // turn the LED on (HIGH is the voltage level)
  delay(1000);           // wait for a second
  digitalWrite(13, LOW); // turn the LED off by making the voltage LOW
  delay(1000);           // wait for a second
}
```

Result

This simple sample code will turn on and off this LED module every one second. And the brightness is depend on the voltage it gets from Arduino. (Maximum is 5V.)

For any question/advice/cool idea to share, please visit [DFRobot Forum](#).