

DO NOT SCALE FROM THIS PRINT

DESIGNED & DIMENSIONED IN INCHES[MILLIMETERS]

PRF06-P-C-EP-142-SS

SERIES
-06: N TYPE

GENDER
-P: PLUG

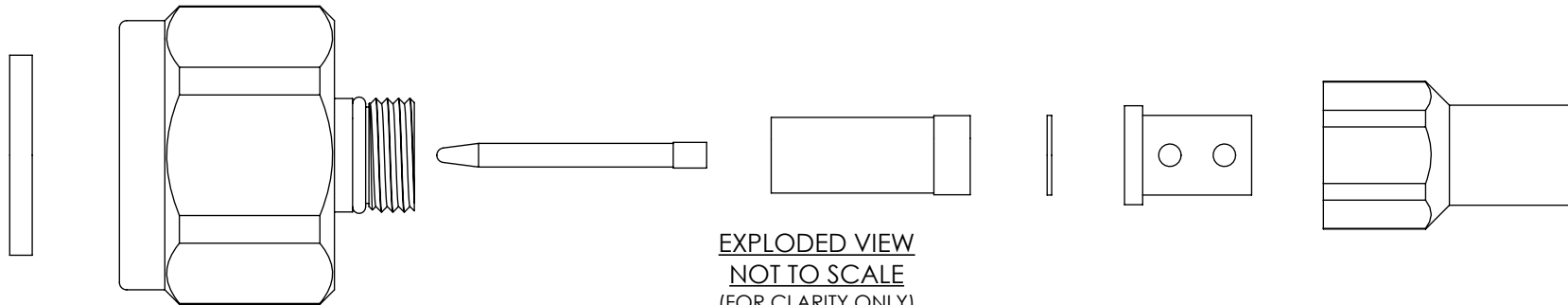
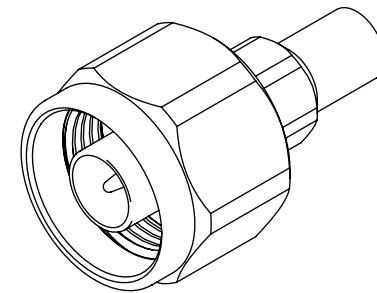
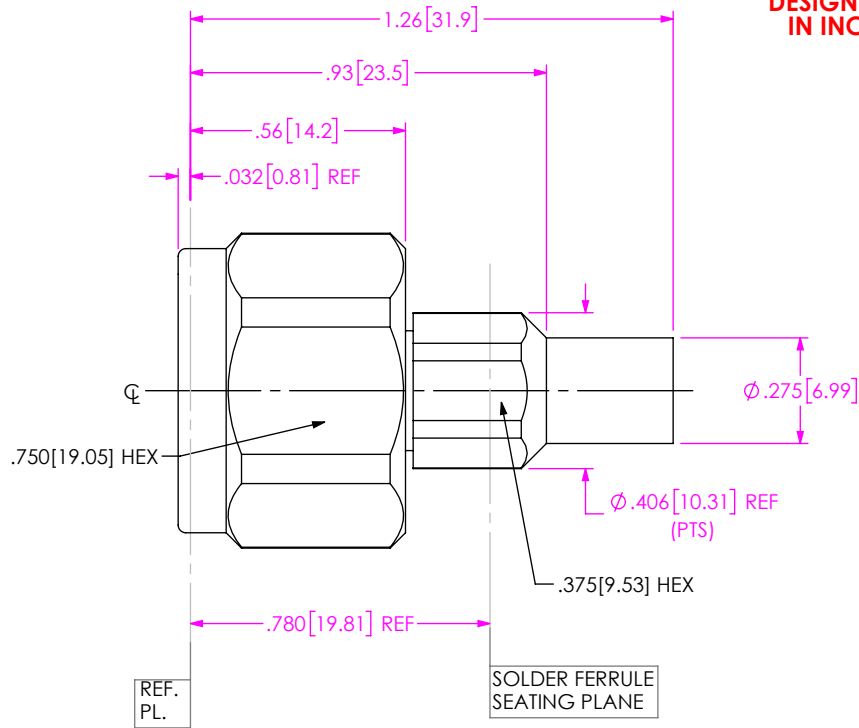
TYPE
-C: CABLE

TERMINATION
-S: SOLDER CLAMP

ORIENTATION
-S: STRAIGHT

CABLE TYPE
-142: HARBOUR LL142

FINISH
-EP: 50µ" EXTRA HEAVY GOLD CENTER CONTACT, PASSIVATED OUTER CONTACT



EXPLODED VIEW
NOT TO SCALE
(FOR CLARITY ONLY)

NOTES:

- MATERIAL:**
BODY, BUSHING, CLAMP NUT: STAINLESS STEEL
CONTACT: BERYLLIUM COPPER
SOLDER FERRULE: BRASS ALLOY
INSULATORS: PTFE
GASKET, O-RING: SILICONE RUBBER
- FINISH:**
BODY, BUSHING, CLAMP NUT: PASSIVATED
CONTACT, SOLDER FERRULE: 50µ" MIN. GOLD OVER 50µ" MIN. NICKEL PLATE
- PERFORMANCE:**
IMPEDANCE: 50 Ω
FREQUENCY: DC TO 18 GHz
VSWR: 1.16:1 MAXIMUM
INSERTION LOSS: 0.04 X √f(GHz)
DWV: 2500 Vrms

4. PCI P/N: 3177

F:\DWG\MISC\MKTG\PRF06-P-C-EP-142-SS-MKT.SLDDRW

UNLESS OTHERWISE SPECIFIED, DIMENSIONS ARE IN INCHES. TOLERANCES ARE:
DECIMALS ANGLES
.XX: ±.01[0.3] 1°
.XXX: ±.005[0.13]
.XXXX: ±.0005[0.013]

PROPRIETARY NOTE
THIS DOCUMENT CONTAINS CONFIDENTIAL AND PROPRIETARY INFORMATION AND ALL DESIGN, MANUFACTURING, REPRODUCTION, USE, PATENT RIGHTS AND SALES RIGHTS ARE EXPRESSLY RESERVED BY SAMTEC, INC. THIS DOCUMENT SHALL NOT BE DISCLOSED, IN WHOLE OR PART, TO ANY UNAUTHORIZED PERSON OR ENTITY NOR REPRODUCED, TRANSFERRED OR INCORPORATED IN ANY OTHER PROJECT IN ANY MANNER WITHOUT THE EXPRESS WRITTEN CONSENT OF SAMTEC, INC.



520 PARK EAST BLVD., NEW ALBANY, IN 47150
PHONE: 812-944-6733 FAX: 812-948-5047
e-Mail: info@SAMTEC.com code 55322

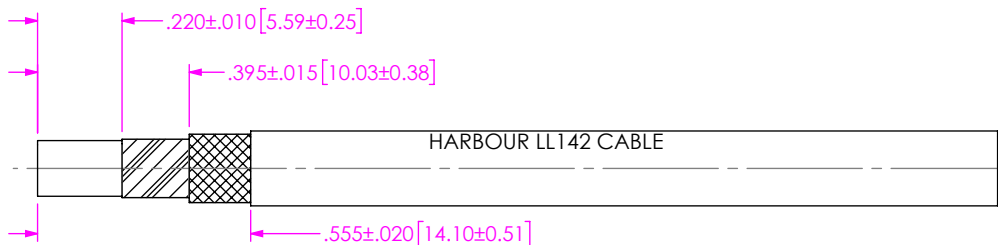
DO NOT SCALE DRAWING

SHEET SCALE: 2:1

DESCRIPTION: N PLUG(18GHZ). SOLDER CLAMP FOR HARBOUR LL142 CABLE

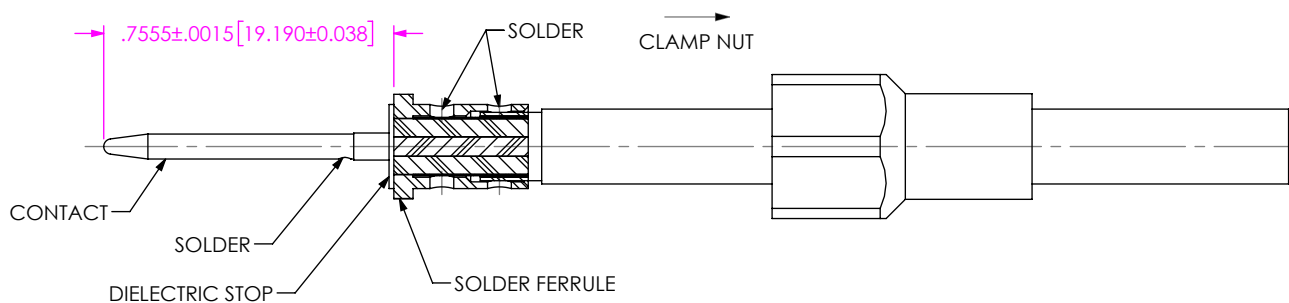
DWG. NO. PRF06-P-C-EP-142-SS

BY: JESUS M 3/22/2019 SHEET 1 OF 3



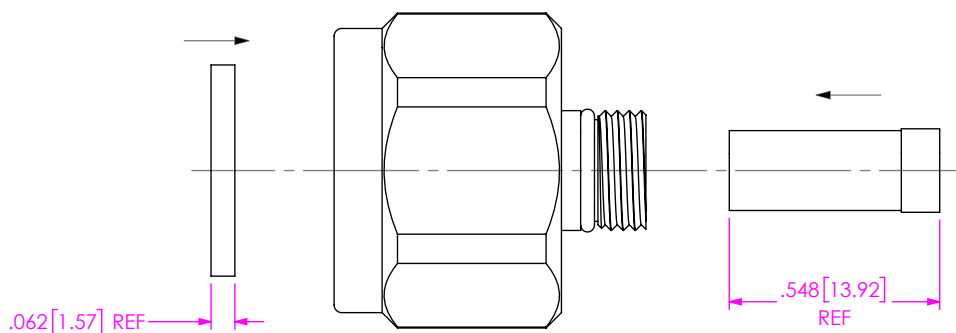
1. TRIM CABLE AS SHOWN

IN-PROCESS VIEW 1



- 2A. SLIDE CLAMP NUT OVER CABLE AS SHOWN.
- 2B. INSERT CABLE INTO SOLDER FERRULE AS SHOWN THEN SOLDER BRAIDS TO FERRULE WHERE INDICATED.
- 2C. TRIM EXPOSED CABLE DIELECTRIC FLUSH WITH SOLDER FERRULE FACE.
- 2D. SLIDE DIELECTRIC STOP CABLE CENTER CONDUCTORS AGAINST FERRULE FACE AND SOLDER CONTACT FLUSH AGAINST STOP TO DIMENSION SHOWN

IN-PROCESS VIEW 2



3A. INSTALL INSULATOR & GASKET INTO SUB ASSEMBLY

IN-PROCESS VIEW 3

PROPRIETARY NOTE
THIS DOCUMENT CONTAINS CONFIDENTIAL AND PROPRIETARY INFORMATION AND ALL DESIGN, MANUFACTURING, REPRODUCTION, USE, PATENT RIGHTS AND SALES RIGHTS ARE EXPRESSLY RESERVED BY SAMTEC, INC. THIS DOCUMENT SHALL NOT BE DISCLOSED, IN WHOLE OR PART, TO ANY UNAUTHORIZED PERSON OR ENTITY NOR REPRODUCED, TRANSFERRED OR INCORPORATED IN ANY OTHER PROJECT IN ANY MANNER WITHOUT THE EXPRESS WRITTEN CONSENT OF SAMTEC, INC.



520 PARK EAST BLVD, NEW ALBANY, IN 47150
PHONE: 812-944-6733 FAX: 812-948-5047
e-Mail info@SAMTEC.com code 55322

DO NOT SCALE DRAWING

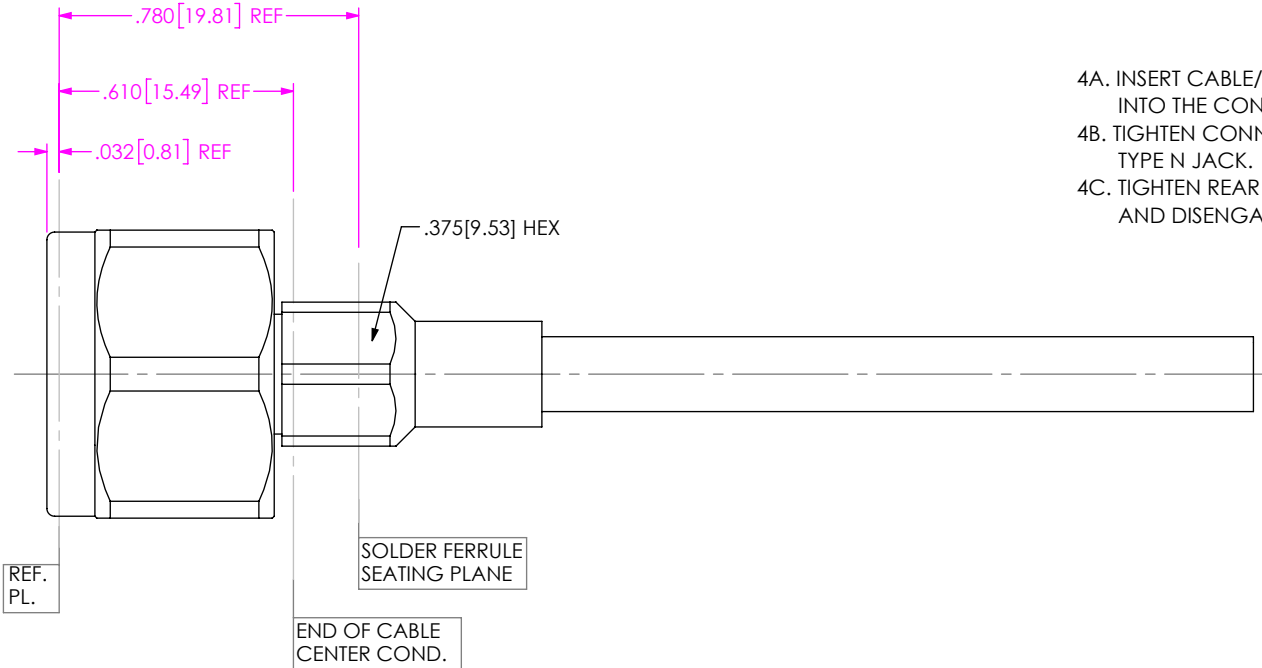
SHEET SCALE: 2:1

DESCRIPTION: N PLUG(18GHZ). SOLDER CLAMP FOR HARBOUR LL142 CABLE

DWG. NO. PRF06-P-C-EP-142-SS

BY: JESUS M 3/22/2019 SHEET 2 OF 3

CABLE APPLICATION VIEWS



- 4A. INSERT CABLE/CONTACT SUB-ASSEMBLY INTO THE CONNNECTOR UNTIL SEATED.
- 4B. TIGHTEN CONNECTOR COUPLING NUT TO MATING TYPE N JACK.
- 4C. TIGHTEN REAR CLAMP NUT TO 30-40 IN-LBS AND DISENGAGE MAIN INTERFACE FROM JACK.

IN-PROCESS VIEW 4

PROPRIETARY NOTE
 THIS DOCUMENT CONTAINS CONFIDENTIAL AND PROPRIETARY INFORMATION AND ALL DESIGN, MANUFACTURING, REPRODUCTION, USE, PATENT RIGHTS AND SALES RIGHTS ARE EXPRESSLY RESERVED BY SAMTEC, INC. THIS DOCUMENT SHALL NOT BE DISCLOSED, IN WHOLE OR PART, TO ANY UNAUTHORIZED PERSON OR ENTITY NOR REPRODUCED, TRANSFERRED OR INCORPORATED IN ANY OTHER PROJECT IN ANY MANNER WITHOUT THE EXPRESS WRITTEN CONSENT OF SAMTEC, INC.



520 PARK EAST BLVD, NEW ALBANY, IN 47150
 PHONE: 812-944-6733 FAX: 812-948-5047
 e-Mail info@SAMTEC.com code 55322

DO NOT SCALE DRAWING
 SHEET SCALE: 2:1

DESCRIPTION: N PLUG(18GHZ). SOLDER CLAMP FOR HARBOUR LL142 CABLE
 DWG. NO. PRF06-P-C-EP-142-SS
 BY: JESUS M 3/22/2019 SHEET 3 OF 3