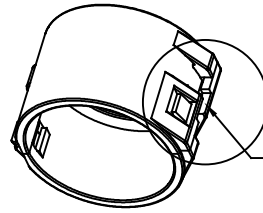
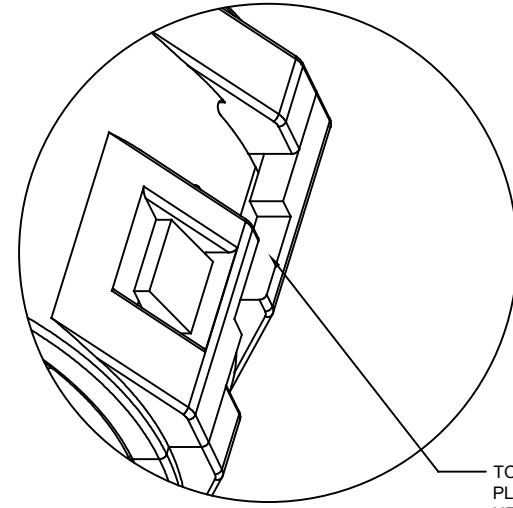
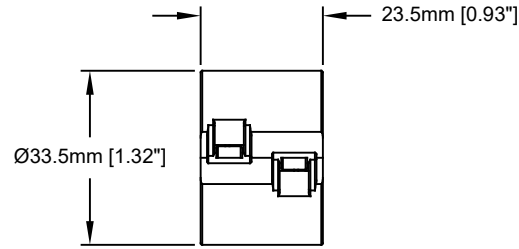
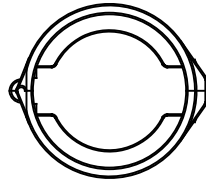
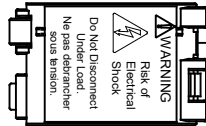


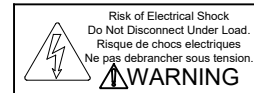
REVISIONS					
REV	ECO	DESCRIPTION	DATE	BY	APPR
A1	-	TECHNICAL DATA SHEET RELEASE	12-MAY-14	KMM	RFC



TO DISENGAGE:
PLACE FLAT HEAD SCREWDRIVER
HERE AND TURN CLOCKWISE.



TO DISENGAGE:
PLACE FLAT HEAD SCREWDRIVER
HERE AND TURN CLOCKWISE.



Amphenol P/N	ROCKWELL P/N	MOLEX	TURCK
P29041	280-MTRLC-M2	11400A-10	LOCK-A POWER

TECHNICAL DATA:

- 1) MATERIALS: THERMOPLASTIC COLOR: BLACK
- 2) RoHS COMPLIANT

PART NUMBER		DESCRIPTION		ITEM
C-P29041		M22 DROP LOCKING CLIP		1
MATERIALS LIST				
UNLESS OTHERWISE SPECIFIED		SIGNATURES	DATE	<p>Sine Systems - www.amphenol-sine.com 44724 Morley Drive Clinton Township, MI 48036</p>
1) All dimensions are in metric (mm).		DRAWN: KMM	12-MAY-14	
2) Tolerances are as follows:		CHECKED: MRF	12-MAY-14	
1 PL DEC ±0.30 Fractions ±1/64		ENGINEER: KMM		
2 PL DEC ±0.15 Angles ±1°		APPROVAL: RFC	12-MAY-14	
3 PL DEC ±0.08		CUSTOMER:		M22 DROP LOCKING CLIP
3) Note reference =		THIS DRAWING IS SUPPLIED FOR INFORMATION ONLY. DESIGN FEATURES, SPECIFICATIONS AND PERFORMANCE DATA SHOWN HEREON ARE THE PROPERTY OF THE AMPHENOL CORPORATION. NO RIGHTS OF REPRODUCTION ARE IMPLIED. ALL DIMENSIONS ARE SUBJECT TO NORMAL MANUFACTURING VARIATIONS.		REVISION
MATERIAL SPECIFICATIONS:		SIZE	TYPE	DWG NO:
PROCESS SPECIFICATIONS:		C-	C-	P29041
NEXT ASSY:		SCALE	FULL	C-P29041
		SHEET	1	OF 1

TITLE: M22 DROP LOCKING CLIP
DWG NO: C-P29041
REV: A1
SH: 1
OF: 1