

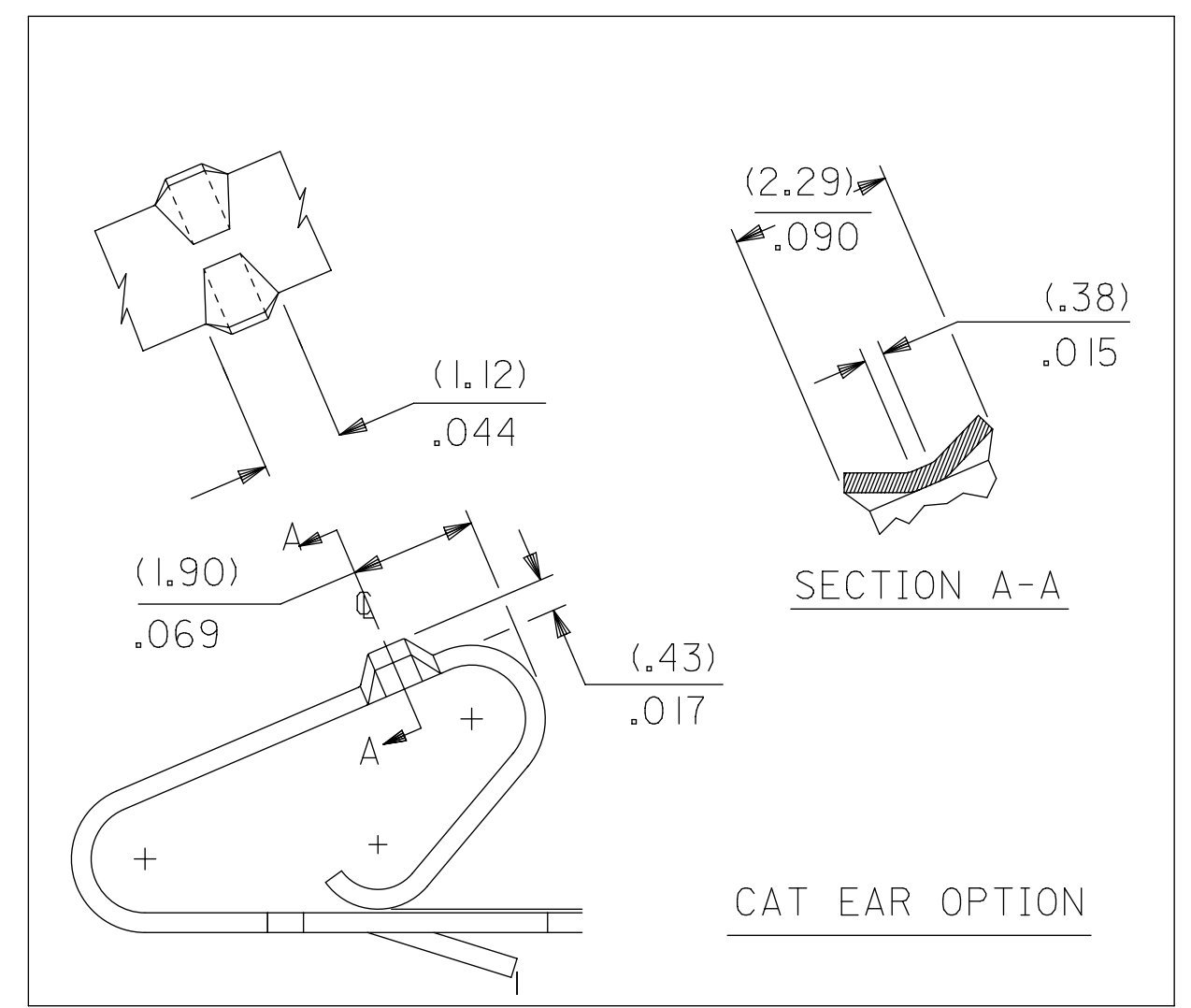
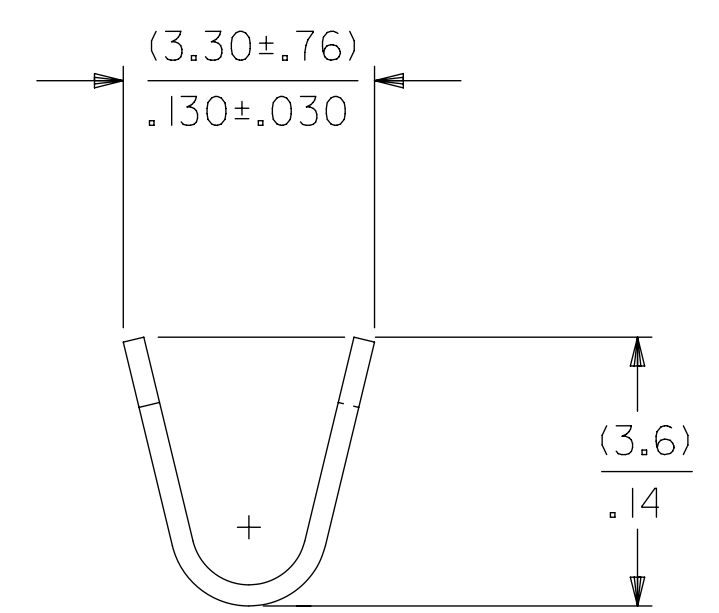
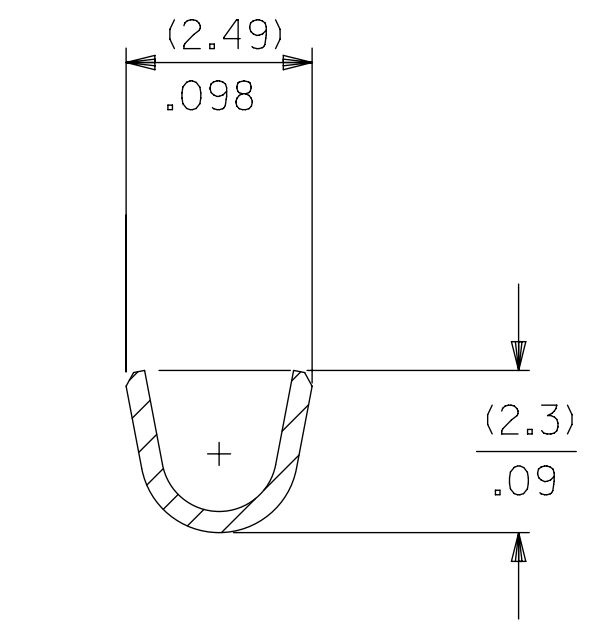
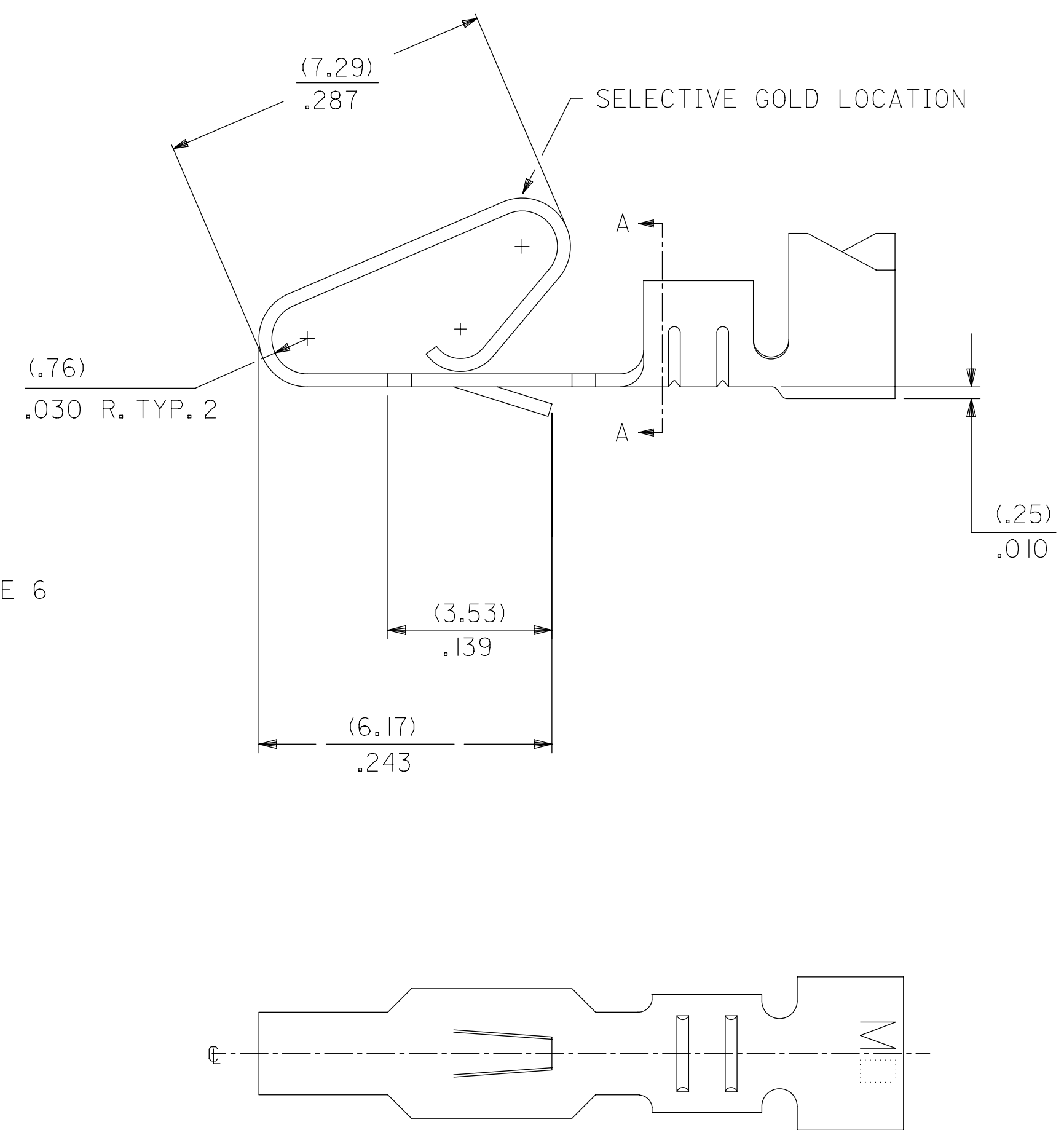
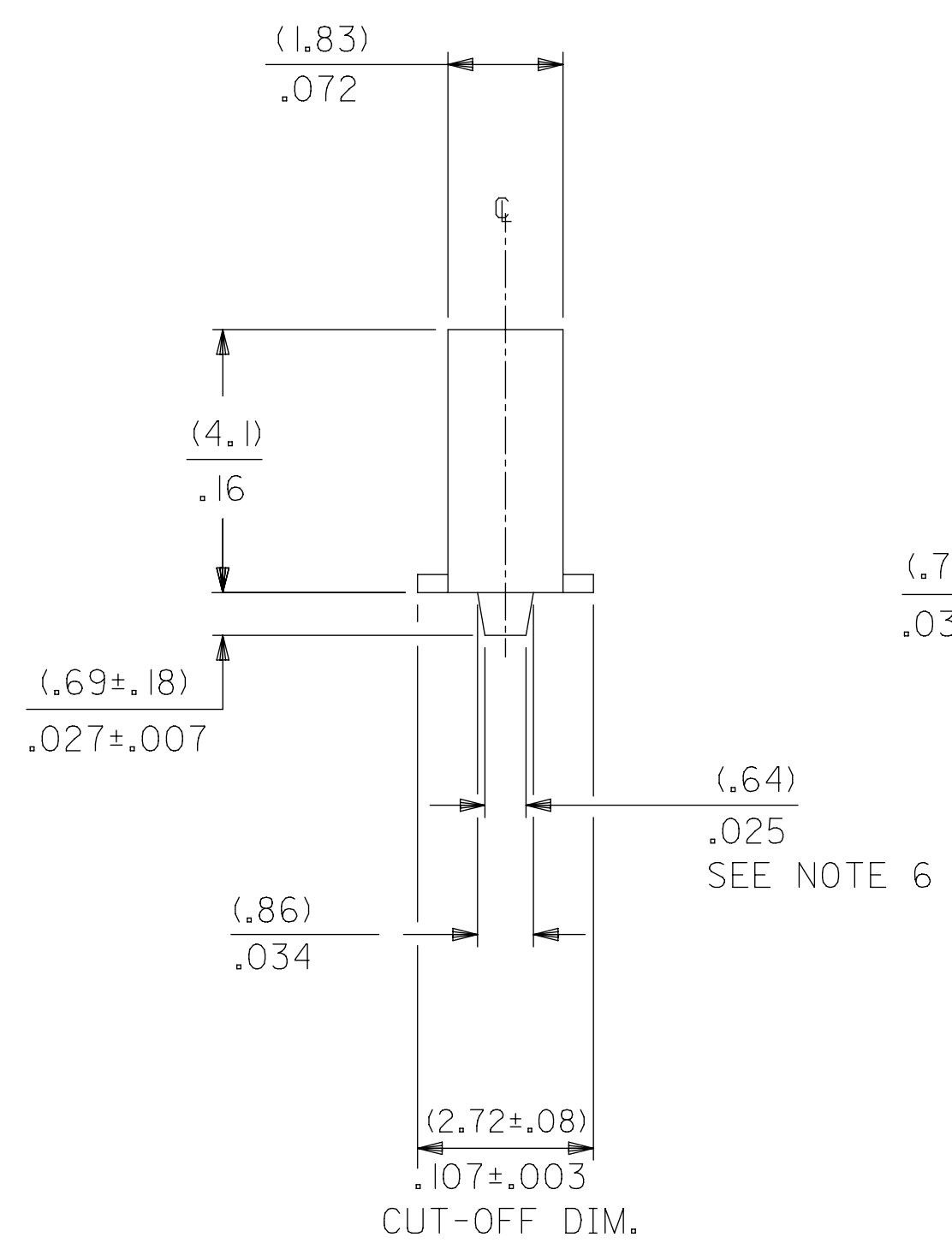
MATERIAL CODE  
 (.27)/.0106 THK  
 1=BRASS  
 3=PHOS BRONZE

OPTION CODE  
 BLANK=AS SHOWN  
 C=CAT EAR OPTION

WINDING SPEC.  
 A=CHAIN, PER WINDING DETAIL "A"  
 BLANK=CHAIN, PER WINDING DETAIL "B"  
 L=LOOSE

FINISH:

(P909) OVERALL HOT TIN DIP: (0.00254)/.000100 MIN.  
 (122) OVERALL TIN: (0.00381)/.000150 MIN.  
 OVER (0.00076)/.000030 MIN. NICKEL  
 (154) OVERALL TIN: (0.00254)/.000100 MIN.  
 OVER (0.00127)/.000050 MIN. NICKEL  
 (224) OVERALL MATTE TIN: (0.00508)/.000200 MIN.  
 OVER (0.00127)/.000050 MIN. NICKEL  
 (550) SELECT GOLD: (0.00038)/.000015 MIN.  
 OVERALL GOLD FLASH: (0.00005)/.000002 MIN.  
 OVERALL NICKEL UNDERPLATE: (0.00076)/.000030 MIN.  
 (555) SELECT GOLD: (0.00038)/.000015 MIN.  
 OVERALL NICKEL UNDERPLATE: (0.00076)/.000030 MIN.  
 (558) SELECT GOLD: (0.00076)/.000030 MIN.  
 OVERALL GOLD FLASH: (0.00005)/.000002 MIN.  
 OVERALL NICKEL UNDERPLATE: (0.00127)/.000050 MIN.  
 (561) SELECT GOLD: (0.00076)/.000030 MIN.  
 OVERALL NICKEL UNDERPLATE: (0.00127)/.000050 MIN.  
 (591) SELECT GOLD: (0.00127)/.000050 MIN.  
 OVERALL GOLD FLASH: (0.00005)/.000002 MIN.  
 OVERALL NICKEL UNDERPLATE: (0.00127)/.000050 MIN.



- NOTES:
1. MATERIAL: SEE LEGEND
  2. FINISH: SEE LEGEND
  3. PRODUCT SPECIFICATION PS-08-50.
  4. PACKAGING SPECIFICATION: LOOSE TERMINALS: PER PK-2759-001  
CHAIN FORM TERMINALS: PK-2759-002
  5. DIMENSIONS GIVEN ACROSS CENTERLINES ARE SYMMETRICAL ABOUT THOSE CENTERLINES WITHIN HALF THE TOTAL TOLERANCE.
  6. (0.86 ±0.05)/.034 ±.002 IS AN OPTIONAL DESIGN.
  7. CRIMP ACCEPTS 18 TO 24 AWG WIRE WITH (2.79)/.110 MAX. INSULATION DIAMETER. AND CAN ACCEPT (3.00)/.118 MAX. INSULATION DIAMETER WITH SPECIAL TOOLING.
  8. TERMINAL FOR USE IN 2139, 3001, 3069, AND 91813 SERIES HOUSINGS WITH (2.54)/.100 MAX. INSULATION DIAMETER, 2574, 6422, AND 5239 SERIES HOUSINGS WITH (2.79)/.110 MAX. INSULATION DIAMETER, AND 41695 SERIES HOUSING WITH (3.00)/.118 MAX. INSULATION DIAMETER.
  9. THIS PART CONFORMS TO CLASS B REQUIREMENTS OF COSMETIC SPECIFICATION PS-45499-002.

THIS DRAWING CONTAINS INFORMATION THAT IS PROPRIETARY TO MOLEX ELECTRONIC TECHNOLOGIES, LLC AND SHOULD NOT BE USED WITHOUT WRITTEN PERMISSION									
SYMBOLS		DIMENSION UNITS		SCALE		CURRENT REV DESC: NOTE 4 UPDATED			
▽ = 0	▽ = 0	MM/IN	1:1						
▽ = 0	▽ = 0	GENERAL TOLERANCES (UNLESS SPECIFIED)				EC NO: 605479			
▽ = 0	▽ = 0		MM	INCH		DRWN: SS06		2018/09/20	
▽ = 0	▽ = 0	4 PLACES	±	±		DRWN: ISHWARG		2018/10/05	
▽ = 0	▽ = 0	3 PLACES	±	± 0.01		APPR: ISHWARG		2018/10/05	
▽ = 0	▽ = 0	2 PLACES	±	0.25 ± 0.014		INITIAL REVISION:			
▽ = 0	▽ = 0	1 PLACE	±	0.36 ±		DRWN: SAMIEC		1986/06/03	
▽ = 0	▽ = 0	0 PLACES	±	±		APPR: FSMITH		2012/03/20	
▽ = 0	▽ = 0	ANGULAR TOL		± 0.5°		THIRD ANGLE PROJECTION			
▽ = 0	▽ = 0	DRAFT WHERE APPLICABLE MUST REMAIN WITHIN DIMENSIONS				DRAWING		SERIES	
▽ = 0	▽ = 0					D-SIZE		2478	
		MATERIAL NUMBER		CUSTOMER		SHEET NUMBER			
		SEE CHART		GENERAL MARKET		1 OF 2			

2478-1-(***)*		
PART NO.	ENG. NO.	
08-50-0105	2478-1-(P909)	
08-50-0106	2478-1-(P909)L	
08-56-0105	2478-1-(550)	
08-56-0106	2478-1-(550)L	
08-55-0103	2478-1-(555)	
08-55-0104	2478-1-(555)L	
08-50-0119	2478-1-(122)	
08-50-0120	2478-1-(122)L	
08-50-0271	2478-1-(P909)A	
08-50-0015	<b>2478-1-(154)</b>	
08-50-0016	<b>2478-1-(154)L</b>	
08-50-0063	2478-1-(224)	
08-50-0064	2478-1-(224)L	
08-55-0133	2478-1-(561)	
08-55-0134	2478-1-(561)L	

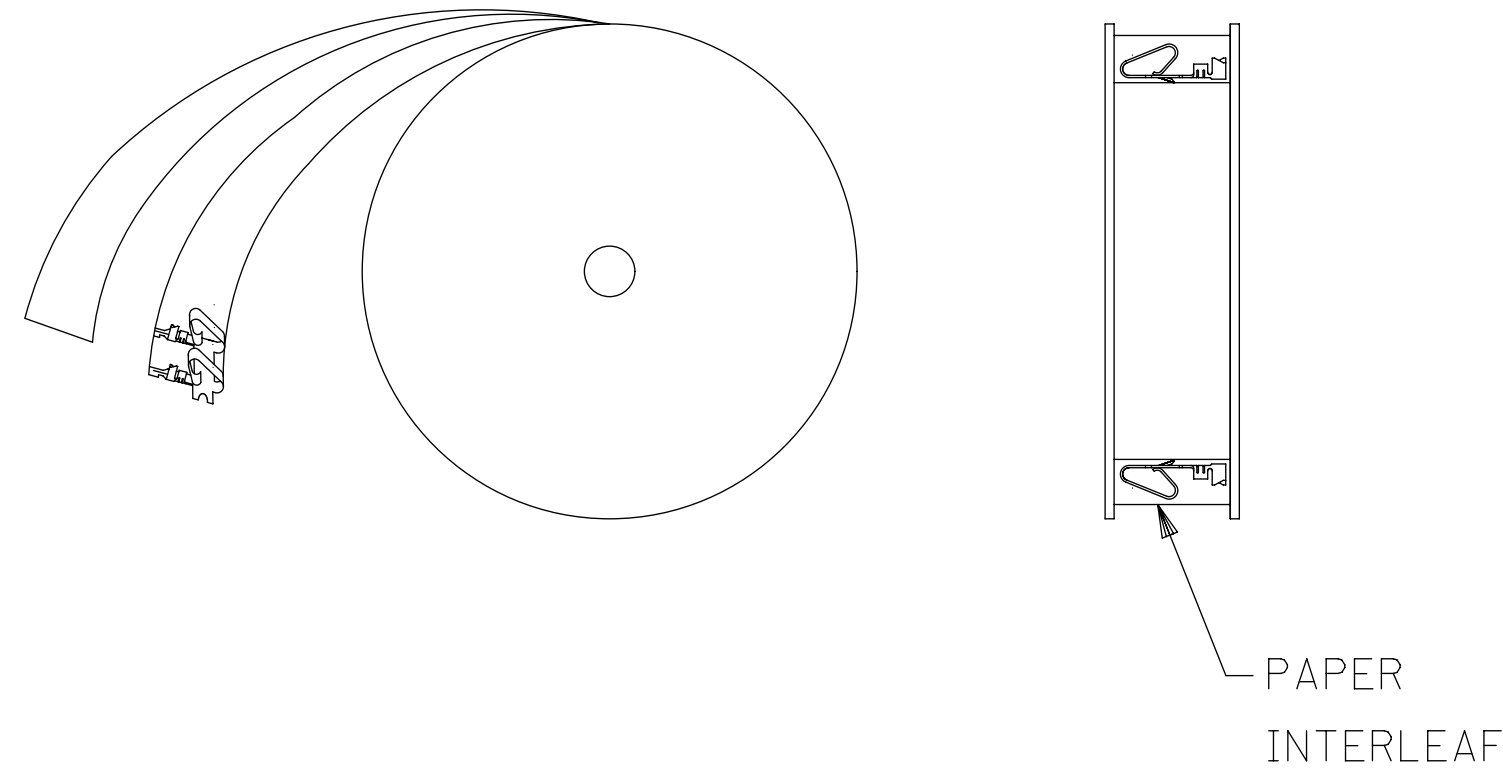
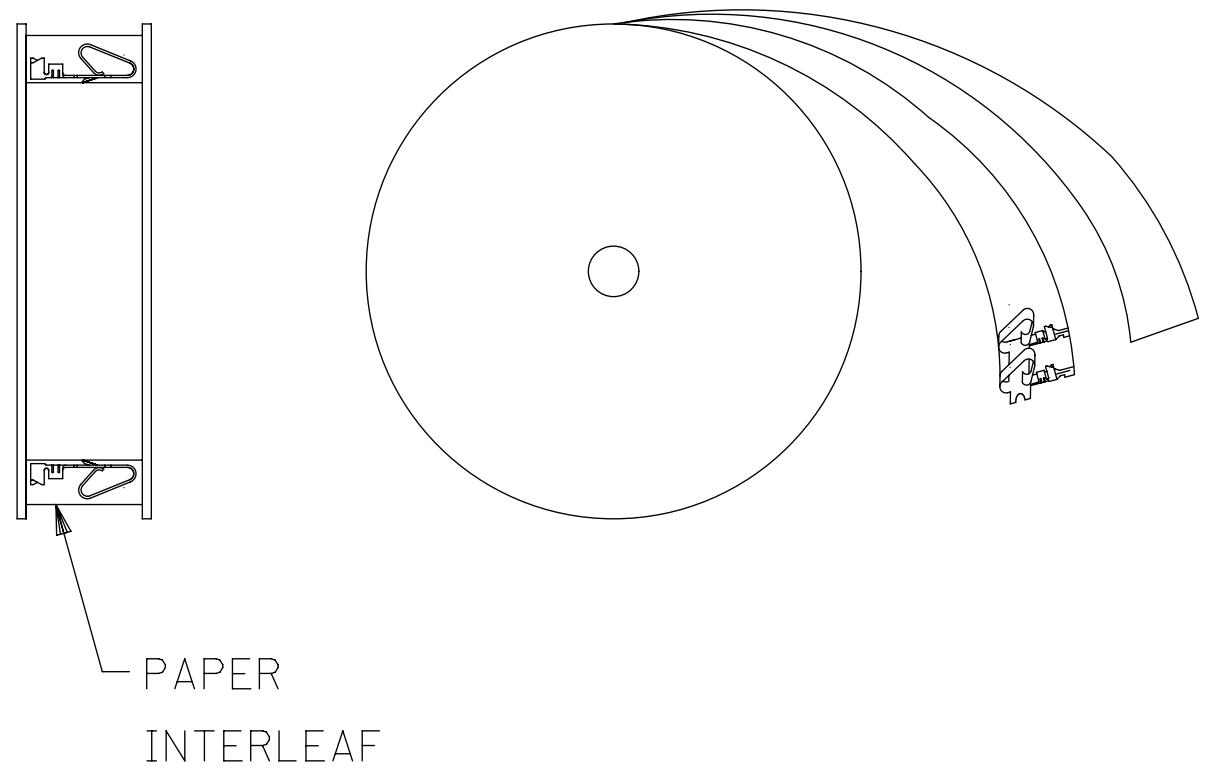
2478-3-(***)*		
PART NO.	ENG. NO.	
08-52-0071	2478-3-(P909)	
08-52-0072	2478-3-(P909)L	
08-65-0114	2478-3-(555)	
08-65-0115	2478-3-(555)L	
08-52-0811	<b>2478-3-(154)</b>	
08-52-0812	<b>2478-3-(154)L</b>	
08-50-0281	2478-3-(122)	
	2478-3-(122)L	
08-58-0121	2478-3-(550)	
08-58-0122	2478-3-(550)L	
08-58-0103	2478-3-(591)	
08-58-0104	2478-3-(591)L	
08-58-0114	2478-3-(558)	
08-58-0115	2478-3-(558)L	

2478-1C-(***)*		
PART NO.	ENG. NO.	
08-50-0091	<b>2478-1C-(154)</b>	
08-50-0093	<b>2478-1C-(154)L</b>	

2478-3C-(***)*		
PART NO	ENG NO	
08-52-0044	2478-3C-(P909)	
08-52-0045	2478-3C-(P909)L	
08-52-0023	<b>2478-3C-(154)</b>	
08-52-0024	<b>2478-3C-(154)L</b>	

WINDING DETAIL "A"

WINDING DETAIL "B"



SYMBOLS		THIS DRAWING CONTAINS INFORMATION THAT IS PROPRIETARY TO MOLEX ELECTRONIC TECHNOLOGIES, LLC AND SHOULD NOT BE USED WITHOUT WRITTEN PERMISSION	
▽ = 0	DIMENSION UNITS	SCALE	CURRENT REV DESC: NOTE 4 UPDATED
▽ = 0	MM/IN	1:1	
▽ = 0	GENERAL TOLERANCES (UNLESS SPECIFIED)		
▽ = 0		MM	INCH
▽ = 0	4 PLACES	±	±
▽ = 0	3 PLACES	±	± 0.01
▽ = 0	2 PLACES	±	± 0.25 ± 0.014
▽ = 0	1 PLACE	±	± 0.36 ±
▽ = 0	0 PLACES	±	±
□ = 0	ANGULAR TOL	±	± 0.5 °
■ = 0	DRAFT WHERE APPLICABLE MUST REMAIN WITHIN DIMENSIONS		
▽ = 0		THIRD ANGLE PROJECTION	
		DRAWING	SERIES
		D-SIZE	2478
DOCUMENT NUMBER		DOC TYPE   DOC PART   REVISION	
SD-2478		PSD   001   Y2	
MATERIAL NUMBER		CUSTOMER	
SEE CHART		GENERAL MARKET	
SHEET NUMBER		2 OF 2	