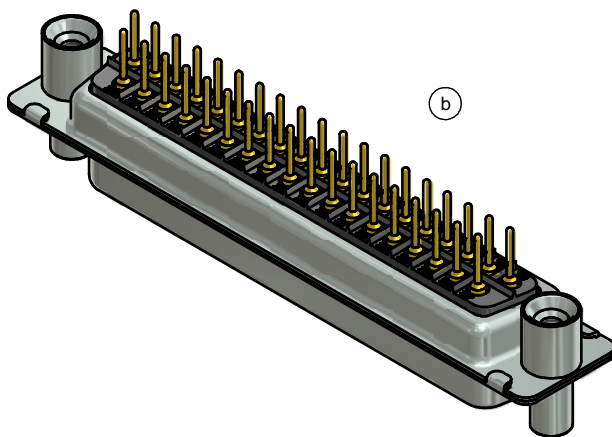
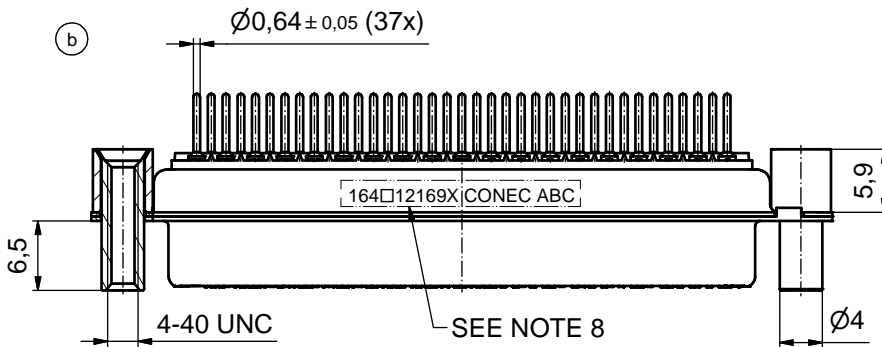
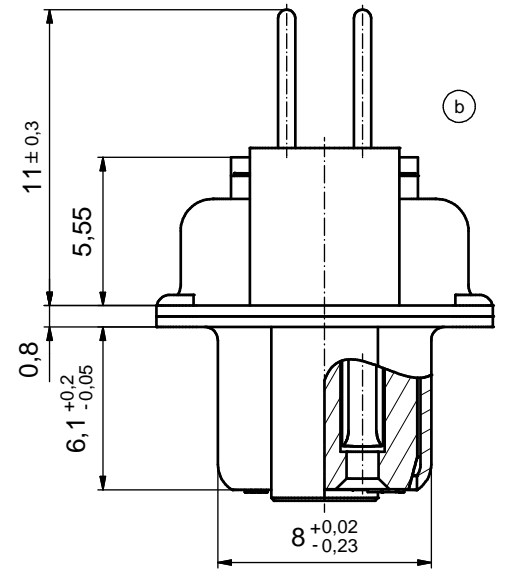
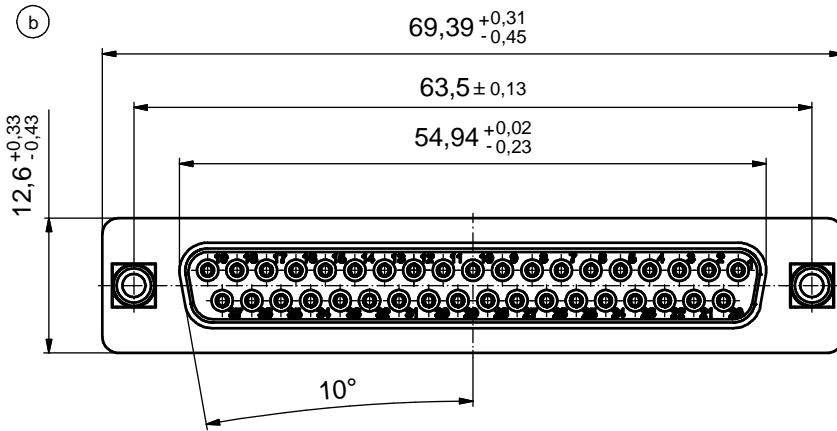


(5:1)



NOTES: (b)

1. METALSHELLS: STEEL; min. 315µm TIN over 40-80µm NICKEL
2. INSULATORS: PBT GF UL 94 V-0, BLACK
3. CONTACTS: COPPER ALLOY; PLATING (SEE PART NO):
 - PLEASE ADD A for GOLD FLASH over NICKEL (PREFERRED TYPE)
 - PLEASE ADD B for 20µm HARD GOLD over min. 50µm NICKEL
 - PLEASE ADD C for 30µm HARD GOLD over min. 50µm NICKEL
4. THREADED REAR SPACERS / FRONT THREADED LOCKS: COPPER ALLOY; min. 200µm TIN over 80µm NICKEL
5. SLEEVES: COPPER ALLOY; min. 200µm TIN over 80µm NICKEL
6. P.C.B. HOLE DRILLINGS ON SHEET 2
7. MAXIMUM TORQUE VALUE FOR THREAD: 6 in.LB
8. CONNECTOR IS PART MARKED: 164□12169X CONEC ABC

Directive 2002/95/EC RoHS compliant

THIS DRAWING MAY NOT BE COPIED OR REPRODUCED IN ANY WAY, AND MAY NOT BE PASSED ON TO A THIRD PARTY WITHOUT WRITTEN PERMISSION. OWNERSHIP AND COPYRIGHT OF CONEC GmbH

DO NOT ALTER CAD DRAWING BY HAND

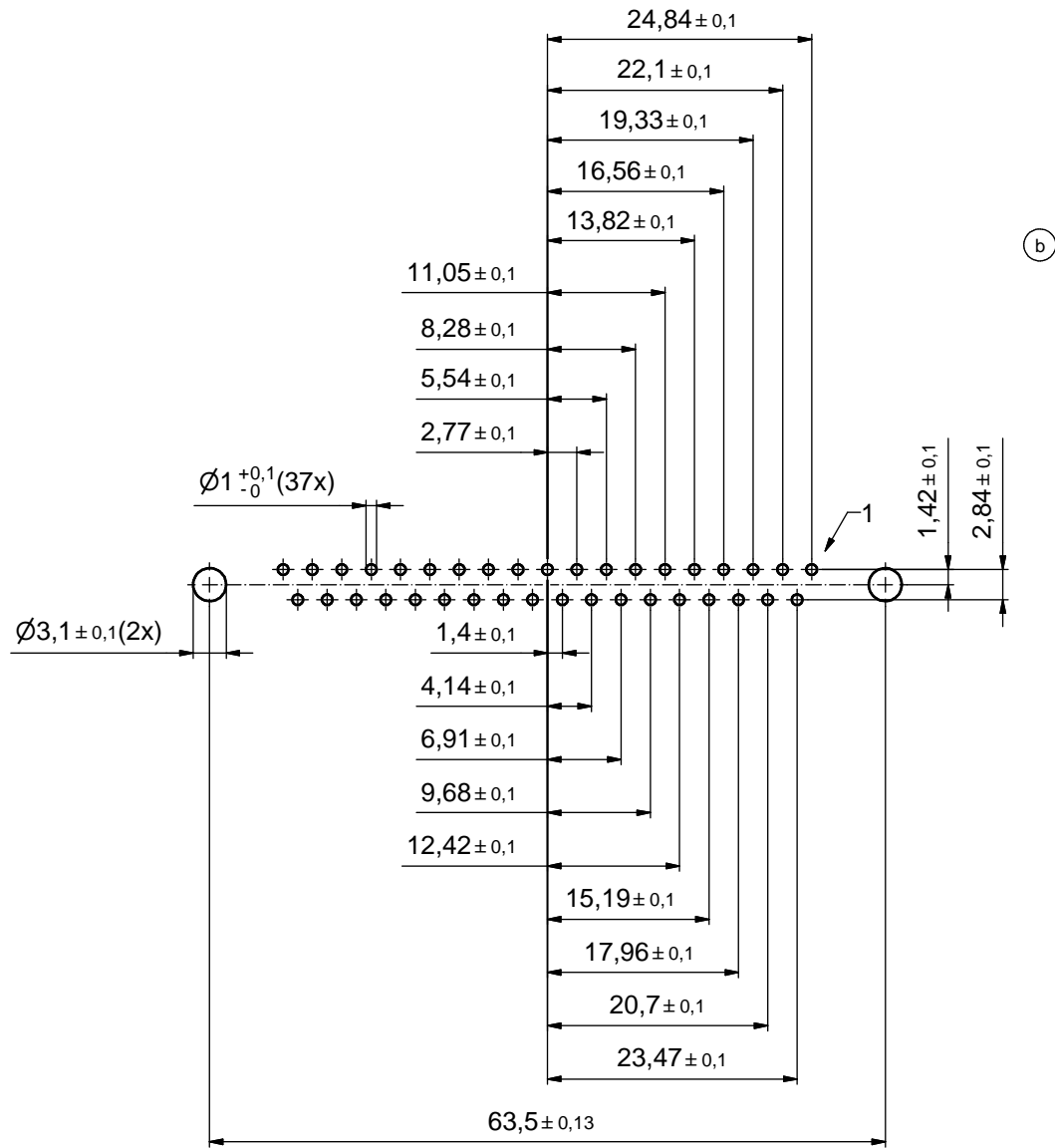
tolerance		dim. in mm	
date	name	drawn	20.08.2014 Heinrich
		appd.	20.08.2014 Henneboel
		norm	
		d-old	16K1A270A/16K1A625
8 x b	Ä 5305	20.08.2014	Heinrich
a	Original		
rev.	description	date	name

scale:	2:1 (5:1)
material:	see notes
title:	
D-SUB FEMALE 37pos. SOLDER PIN STRAIGHT with threaded rear spacer and front threaded lock	
dwg no:	(b) 16K1A3501
part no:	(b) 164□12169X (see note 3)



DIN-A3
sh: 1/2

P.C.B. HOLE DRILLINGS
(P.C.B. TOP SIDE)



THIS DRAWING MAY NOT BE COPIED OR REPRODUCED IN ANY WAY, AND MAY NOT BE PASSED ON TO A THIRD PARTY WITHOUT WRITTEN PERMISSION. OWNERSHIP AND COPYRIGHT OF CONEC GmbH DO NOT ALTER CAD DRAWING BY HAND				tolerance		scale: 2:1
				date	name	material: see sheet 1
				drawn	20.08.2014	Heinrich
				appd.	20.08.2014	Henneboel
				norm		
			d-old			
1 x b	Ä 5305	20.08.2014	Heinrich	title: P.C.B. HOLE DRILLINGS D-SUB FEMALE 37pos. solder pin straight with threaded rear spacer and front threaded lock		
a	Original					
rev.	description	date	name			dwg no: 16K1A3501 DIN-A3 sh: 2/2
						part no: see sheet 1