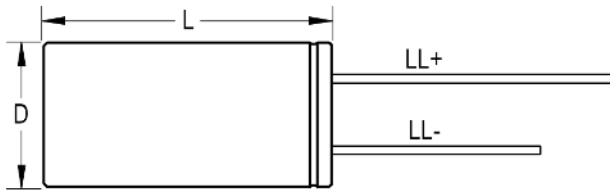
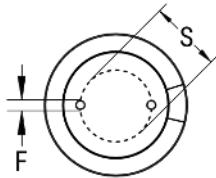


SIDE VIEW



TERMINAL END VIEW



Click [here](#) for the 3D model.

### Dimensions

D	13mm +/-0.5mm
L	25mm +2mm
S	5mm +/-0.5mm
LL Negative	15mm MIN
LL Positive	20mm MIN
F	0.6mm NOM

### Packaging Specifications

Packaging	Bulk, Bag
Packaging Quantity	1600

### General Information

Series	ESG
Dielectric	Aluminum Electrolytic
Description	Long Life Single Ended Aluminum Electrolytic
Features	Long Life
RoHS	Yes
Lead	Wire Leads
AEC-Q200	No

### Specifications

Capacitance	22 $\mu$ F
Capacitance Tolerance	20%
Voltage DC	400 VDC, 450 VDC (Surge)
Temperature Range	-40/+105°C
Rated Temperature	105°C
Life	5000 Hrs
Dissipation Factor	24% 120Hz 20C
Ripple Current	170 mAmps (120Hz 105C)
Leakage Current	538 $\mu$ A (2min 20°C)
Impedance Ratio at -25C	5
Impedance Ratio at -40C	6