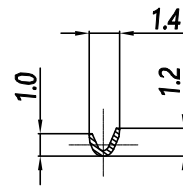


CONTACT ORIENTATION ON ROLL

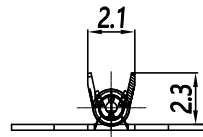
NOTES: (UNLESS OTHERWISE SPECIFIED)

1. MATERIAL:
 - 1.1. CONTACT BODY: COPPER ALLOY.
 - 1.2. OUTER SPRING: STAINLESS STEEL.
2. SPECIFICATIONS:
 - 2.1 CURRENT RATING: 5A MAX.
 - 2.2 TERMINATION TYPE: CRIMPING.
 - 2.3 WIRE RANGE: 30-28AWG.
 - 2.4 WIRE INSULATION DIA(MAX): $\varnothing 1.8\text{mm}$.
3. RoHS COMPLIANT.
4. ALL DIMENSIONS ARE FOR REFERENCE USE ONLY.
5. AVAILABLE TOOLS:
 - 5.1 HAND CRIMPER: MFX-3958. B2
 - 5.2 CRIMP APPLICATOR: MFX-3957.
 - 5.3 EXTRACTION TOOL: QXRT20.

P/N	CONTACT PLATING(MATING AREA)
SP28W1T	TIN PLATING OVER NICKEL.
SP28W1F	GOLD FLASH PLATING OVER NICKEL.
SP28W1G5	5 μ "GOLD PLATING OVER NICKEL.
SP28W1G10	10 μ "GOLD PLATING OVER NICKEL.
SP28W1G15	15 μ "GOLD PLATING OVER NICKEL.
SP28W1G30	30 μ "GOLD PLATING OVER NICKEL.

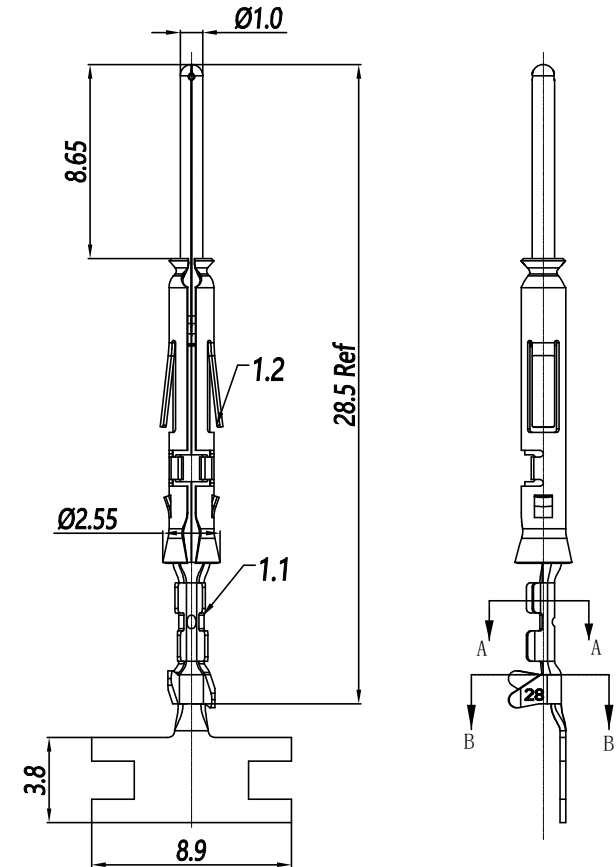


SECTION A-A



SECTION B-B

REVISIONS					
REV	ECO	DESCRIPTION	DATE	BY	APPR
B1	-	RELEASED DRAWING	AUG-18-2014	BEN	TOMMY
B2	-	CHANGE HAND CRIMPER	Nov-8-19	Flan	Tommy



QUANTITY	PART NUMBER	DESCRIPTION	ITEM
MATERIALS LIST			
UNLESS OTHERWISE SPECIFIED 1) All dimensions are in metric(mm). 2) Tolerances are as follows: 1 PL DEC ± 0.30 2 PL DEC ± 0.15 3 PL DEC ± 0.08 Fractions $\pm 1/64$ Angles $\pm 1^\circ$		SIGNATURES DATE DRAWN: Flan Nov-8-19 CHECKED: Martin Nov-8-19 ENGINEER: APPROVAL: Tommy Nov-8-19 CUSTOMER:	
MATERIAL SPECIFICATIONS: PROCESS SPECIFICATIONS: NEXT ASSY:		Amphenol Sine Systems - www.amphenol-sine.com 44724 Morley Drive Clinton Township, MI 48036 ECO-MATE, PIN CONTACT, STAMPED, 30-28AWG, SIZE 20.	
THIS DRAWING IS SUPPLIED FOR INFORMATION ONLY. DESIGN FEATURES, SPECIFICATIONS AND PERFORMANCE DATA SHOWN HEREON ARE THE PROPERTY OF THE AMPHENOL CORPORATION. NO RIGHTS OF REPRODUCTION ARE IMPLIED. ALL DIMENSIONS ARE SUBJECT TO NORMAL MANUFACTURING VARIATIONS.		SIZE: B TYPE: C- SCALE: NONE	DWG NO: SP28W1XX REVISION: B2 SHEET 1 OF 1

TITLE: ECO-MATE, PIN CONTACT, STAMPED, 30-28AWG, SIZE 20
 DWG NO: SP28W1XX
 REV: B2
 SH: 1
 OF: 1