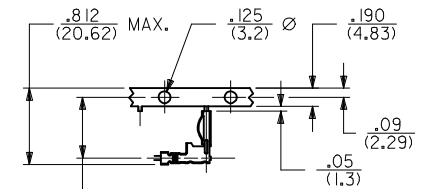
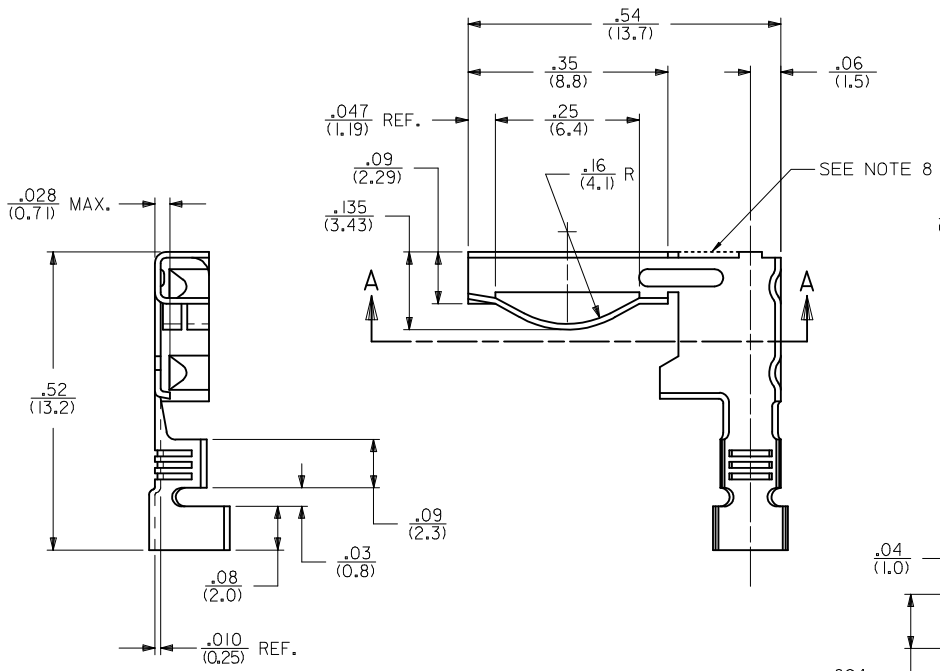
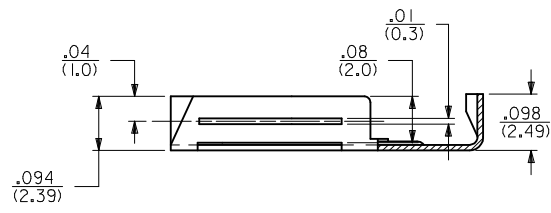
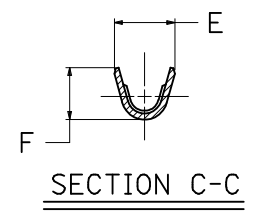
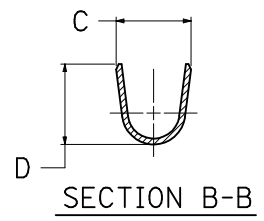


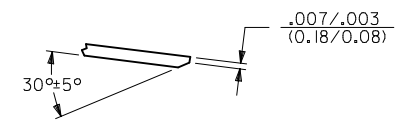
PART NO.	PACKED	MATERIAL	FINISH	WIRE RANGE AWG.	INS. DIA. RANGE	C	D	E	F	ENG. NO.
08-30-0109	CHAIN	BRASS .010/(0.25) THICK	HOT TIN DIPPED .000020/0.00051 MIN OVERALL	#18-#24 CU. STR.	0.060/0.120 (1.52/3.05)	0.130±.030 (3.30±0.76)	0.140±.015 (3.56±0.38)	0.105±.020 (2.67±0.51)	0.088±.015 (2.24±0.38)	1799-MAT



**CARRIER STRIP DETAIL**  
ACTUAL SIZE



**SECTION A-A**



**COIN DETAIL**

SCALE 12:1  
 TYP. FOR BOTH CONDUCTOR  
 AND INSULATOR CRIMPS  
 1799-M SERIES ONLY

NOTES:

1. MATERIAL: SEE CHART
2. FINISH: SEE CHART
3. PRODUCT SPECIFICATION: NONE
4. PACKAGING SPECIFICATION: NONE
5. TERMINAL FOR USE IN 42242 CONNECTORS.
6. WIRE STRIP LENGTH TO BE .140/(3.56)
7. MAXIMUM VOLTAGE: 250 VAC (NOT CONSIDERING PCB)  
CURRENT RATING DEPENDS ON MATING PCB.  
UP TO 7.0 AMPS MAXIMUM PER CIRCUIT IS POSSIBLE UNDER IDEAL CONDITIONS.
8. CUT OFF TABS NOT TO EXCEED THIS SURFACE
9. PARTS CONFORM TO CLASS B REQUIREMENTS OF COSMETIC SPECIFICATION PS-45499-002.

ADD NOTE 8 EC NO: UCP2017-2301 DRWN:JDOX 2017/04/19 CHKD:MKIPPER 2017/04/19 APPR:FSMITH 2017/07/31	QUALITY SYMBOLS	GENERAL TOLERANCES (UNLESS SPECIFIED)	DIMENSION STYLE	SCALE	DESIGN UNITS	THIRD ANGLE PROJECTION
	▽=0	4 PLACES ± --- ± ---	IN/MM	6:1	INCH	☉
	▽=0	3 PLACES ± --- ± .010				
	▽=0	2 PLACES ± 0.25 ± .015				
		1 PLACE ± 0.38 ± ---				
		0 PLACE ± ±				
		ANGULAR ±1/2°				
		DRAFT WHERE APPLICABLE MUST REMAIN WITHIN DIMENSIONS				
			MATERIAL NO.	DOCUMENT NO.		
			SEE CHART	SD-1799-MA		
			SIZE			
			THIS DRAWING CONTAINS INFORMATION THAT IS PROPRIETARY TO MOLEX INCORPORATED AND SHOULD NOT BE USED WITHOUT WRITTEN PERMISSION			

TERMINAL - RIGHT ANGLE  
 MODIFIED FOR EDGE  
 CONNECTORS  
**molex**  
 SHEET NO. 1 OF 1