

PART NUMBER	REV	FIRST USED	TERMINATOR	FEED TYPE	DESCRIPTION
1339780-1	A		BENCH & LEADMAKER	MECH POST FEED	HD-I APPLICATOR
7-1339780-1	A		BENCH & LEADMAKER	MECH POST FEED	-1 AND SPARE PARTS
7-1339780-7	A				SPARE PARTS KIT

CRIMP DATA ESCUBEDO TERMINAL AMP CRIMP SPECS

TERMINAL NAME: FASTON TYPE 4.8 SERIES.

CRIMP	SIZE	TYPE	RANGE
WIRE	2.03 [.080 IN]	F	0.50mm ² - 1.00mm ²
INSUL	3.05 [.120 IN]	F	1.80-2.50 [.071-.098 IN]

WIRE STRIP LENGTH: 3.91-4.67 [.154-.184 IN] APPL INSTRUCTION: 408-8323

TERMINAL APPL SPEC	FEED
NONE	17.50 [.689 IN]

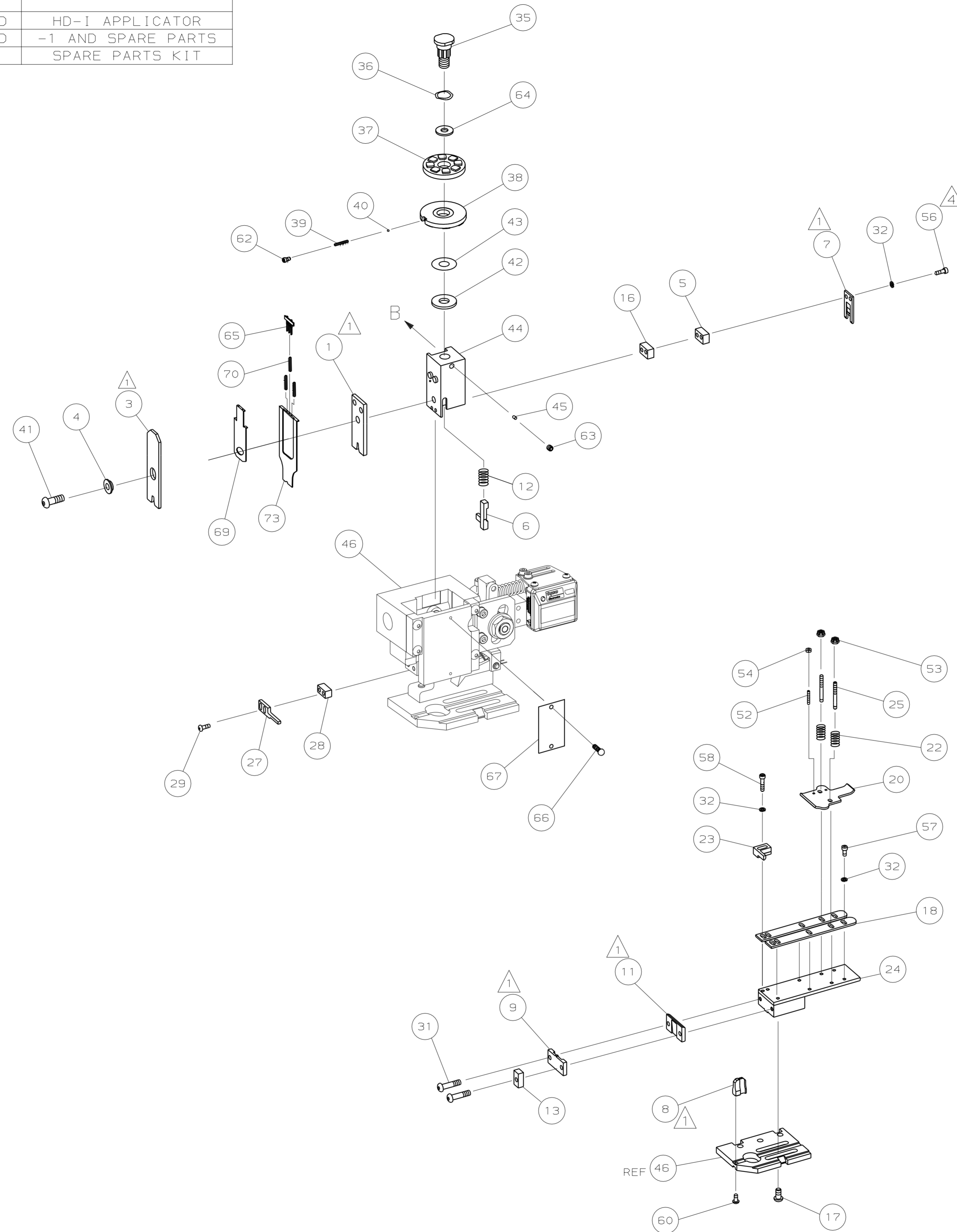
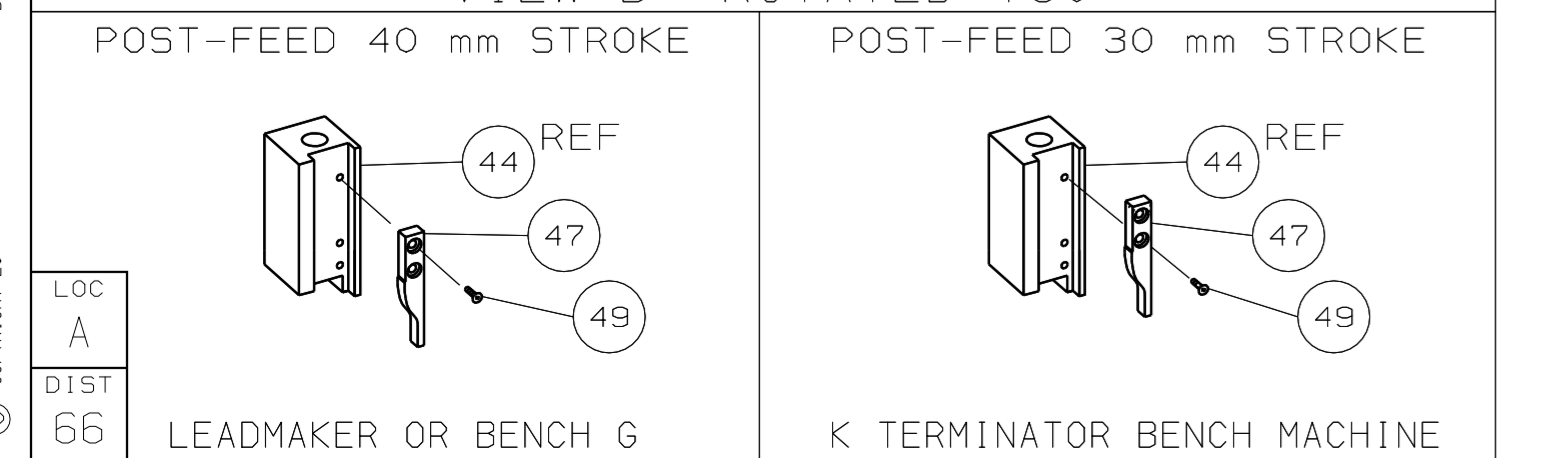
TERMINALS APPLIED

AMP PN	MFR PN			
1572818-1	4412.00	-	-	-
1572818-2	4412.02	-	-	-
1572818-3	4412.04	-	-	-
1572818-4	4412.30	-	-	-
1572818-5	4412.32	-	-	-
1572818-6	4412.70	-	-	-

WIRE SIZE	CRIMP HEIGHT	PIN PN AND LENGTH [IN]
1.00mm ²	1.55 ±0.05 [.061 ±.002 IN]	354779-3 [.3005]
0.75mm ²	1.45 ±0.05 [.057 ±.002 IN]	1-354779-1 [.3045]
0.50mm ²	1.35 ±0.05 [.053 ±.002 IN]	2-354779-1 [.3090]

- RECOMMENDED SPARE PARTS.
- GREASE RAM, CAM, CAM FOLLOWER AND FEED ROD LIGHTLY.
- LUBRICATE DAILY PER THE APPLICATOR INSTRUCTION SHEET SUPPLIED WITH THE APPLICATOR.
- CUT TO LENGTH AT ASSEMBLY.
- ALL CRIMP DATA CALCULATED BY TYCO ELECTRONICS UK LTD.

VIEW B ROTATED 180°



QTY	REV	PART NO	DESCRIPTION	ITEM NO		
-	1	1	1490525-1	DEPRESSOR, WIRE	73	
-	1	1	1339780	PRINT, APPLICATOR LOG SHEET	72	
-	1	1	1338705-2	DOCUMENTATION PACKAGE	71	
-	3	3	2-23147-2	SPRING, DEPRESSOR	70	
-	1	1	1490524-2	SPACER, DEPRESSOR	68	
-	1	1	461264-1	PLATE, IDENTIFICATION	67	
-	2	2	21017-2	SCR,DRIVE (#2X.19) ID PLATE	66	
-	1	1	1424350-1	HOLDER, PIN, WIRED	65	
-	1	1	986950-1	WASHER, FLAT PRECISION	64	
-	1	1	3-18031-0	SCR,SKT SET (M6X6) RAM	63	
-	1	1	18023-9	SCR,SKT CAP (M4X6) CP DSC	62	
-	1	1	18024-7	SCR,BHC (M4X10) ANVIL	60	
-	2	2	1-18023-3	SCR,SHC (M4X16) HOLD DOWN	58	
-	5	5	18023-9	SCR,SHC (M4X6) STRIP GUIDE	57	
-	2	2	1-18023-2	SCR,SHC (M4X12) SLUG BLADE	56	
-	2	2	18029-1	NUT, HEX (M3) DRAG	55	
-	2	2	986965-1	NUT, HEX SL (M4) DRAG STUD	54	
-	2	2	2-18032-2	SCR,SKT SET (M3X10) DRAG	53	
-	1	1	18024-3	SCR,BHC (M3X10) CAM	49	
-	1	1	1338676-1	CAM, POST-FEED 30 & 40 mm ST	48	
-	1	1	1338662-1	APPLICATOR, BASIC (SUBASSY)	46	
-	1	1	690191-1	PLUG, NYLON	45	
-	1	1	1320998-1	RAM	44	
-	1	1	690125-1	WASHER, LAMINATED	43	
-	1	1	690124-1	WASHER, RAM	42	
-	1	1	2-18024-6	SCREW,BHC (M8X25) CRIMPER	41	
-	1	1	23241-1	BALL, STEEL	40	
-	1	1	2-22278-7	SPRING, COMPRESSION	39	
-	1	1	1320922-1	DISC, INSULATION	38	
-	1	1	354777-1	WIRE DISC, PLASTIC	37	
-	1	1	22480-5	WASHER, SPRING	36	
-	1	1	690212-1	POST, RAM	35	
-	9	9	18025-2	WASHER, LOCK (M4) SHEAR BL	32	
-	2	2	1-18024-0	SCR,BHC (M4X20) SHEAR PL	31	
-	2	2	18024-8	SCR,BHC (M4X12) STRIPPER	29	
-	1	1	3-690451-2	SPACER, STRIPPER	28	
-	1	1	240639-1	STRIPPER	27	
-	2	2	1320906-1	DRAG, STUD	25	
-	1	1	1320995-1	PLATE, STRIP GUIDE	24	
-	1	1	240825-2	PLATE, STRIP HOLD DOWN	23	
-	2	2	4-22281-1	SPRING, DRAG	22	
-	1	1	1338665-1	DRAG, STOCK	20	
-	2	2	1338663-4	GUIDE, LOWER STRIP	18	
-	4	4	1-18024-8	SCR,BHC (M6X12) STRIP GD PL	17	
-	1	1	1338708-1	SPACER, SLUG BLADE	16	
-	1	1	690481-3	SPACER, HOLD DOWN	15	
-	1	1	23846-1	SPRING, HOLD DOWN	14	
-	1	1	240644-1	PLATE, REAR SHEAR	13	
-	1	1	690495-6	PLATE, FRONT SHEAR	10	
-	1	2	1	2-1333216-5	ANVIL	9
-	1	1	690474-4	BLADE, SLUG	8	
-	1	1	2-455892-0	HOLD DOWN, TERMINAL	7	
-	1	1	1-240641-1	SPACER, SLUG BLADE	6	
-	1	1	238009-1	SPACER, BLOCK CRIMPER	5	
-	1	2	1	4-1213077-7	CRIMPER, INSULATION	4
-	1	2	1	1-456405-5	CRIMPER, WIRE	3
-	77	-71	-1			2

QTY REQD PER ASSY	PARTS LIST
	MATL - HT TR - FIN -
	DO NOT SCALE PRINT.
	TOLERANCES UNLESS OTHERWISE SPECIFIED:
	1 PLC DEC ±
	2 PLC DEC ±
	3 PLC DEC ±
	ANGLES ±
	SURF TEXTURE: ✓
	REMOVE BURRS, BREAK SHARP EDGES RO.38 MAX
	DIMENSIONS: mm [INCHES]
	DR 030CT05 APP 030CT05
	L.L.OFTHOUSE F.BACKHURST
	CHK - REL 07NOV05 L.L.OFTHOUSE
	NAME END FEED HD-I APPLICATOR MACHINE REF HD-I APPL
	SCALE - DWG NO 1339780 SHEET 1 OF 1 REV A

THIS DRAWING IS A CONTROLLED DOCUMENT.

LAYOUT L1339780

SET UP GAGE 458638-3

RELEASED FOR PUBLICATION BY AMP INCORPORATED. ALL RIGHTS RESERVED.

THIS DRAWING IS UNPUBLISHED. COPYRIGHT © 2006 AMP 1756 REV 3-92