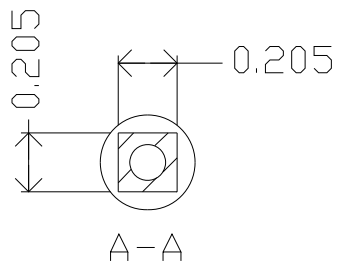
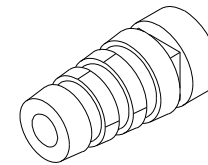
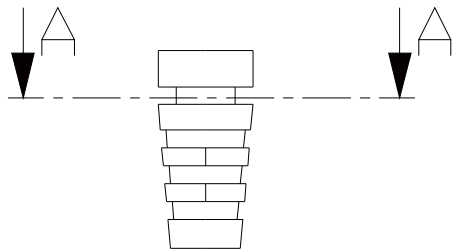
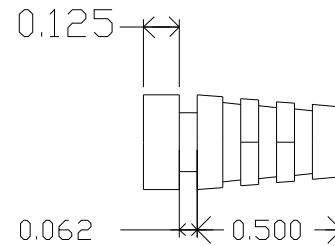
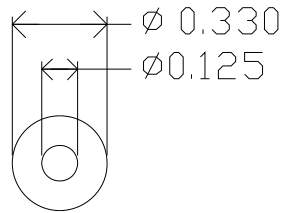


| REVISIONS | | | | |
|-----------|------|-------------|------|----------|
| ZONE | REV. | DESCRIPTION | DATE | APPROVED |
| | | | | |
| | | | | |



MOLD MATERIAL: ISC P/N: 5000214, PVC, M1472, BLK, RoHS

Dimensions are subject to change.
 PROPRIETARY AND CONFIDENTIAL

THE INFORMATION CONTAINED IN THIS DRAWING IS THE SOLE PROPERTY OF ISC ENGINEERING. ANY REPRODUCTION IN PART OR AS A WHOLE WITHOUT THE WRITTEN PERMISSION OF ISC ENGINEERING IS PROHIBITED.

| | | | | | |
|--------------------------|---------|----------------------|-----------|--|---------|
| DIMENSIONS ARE IN INCHES | | NAME | DATE | ISC Engineering 4351 Schaefer Ave, Chino, CA 91710 Ph: 909-596-3315 Fax: 909-596-3335 www.iscengineering.com www.overnoldtooling.com | |
| TOLERANCES: | | DRAWN | R. FIERRO | | 3/18/04 |
| FRACTIONAL± | | CHECKED | | | |
| ANGULAR: MACH± BEND± | | ENG APPR. | | | |
| TWO PLACE DECIMAL± | | MFG APPR. | | | |
| THREE PLACE DECIMAL± | | Q.A. | | | |
| MATERIAL -- | | COMMENTS: | | Round, Solidrib SR | |
| NEXT ASSY | USED ON | FINISH -- | | 1461040-.125-B-205x205-330-0 | |
| APPLICATION | | DO NOT SCALE DRAWING | | SIZE DWG. NO. A 1467063 REV. | |
| | | | | SCALE: 2:1 WEIGHT: SHEET 1 OF 1 | |

