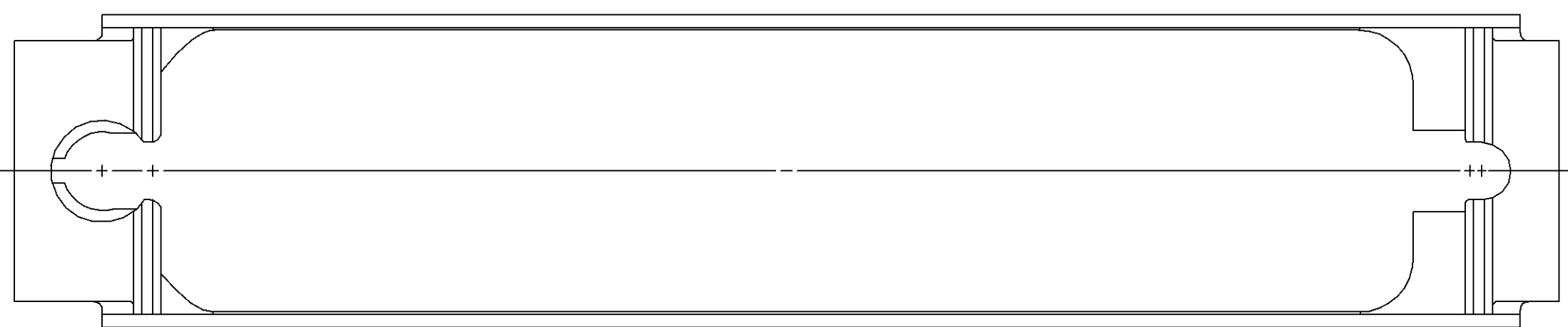
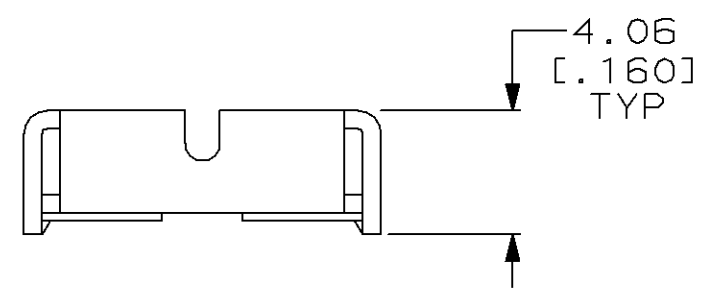
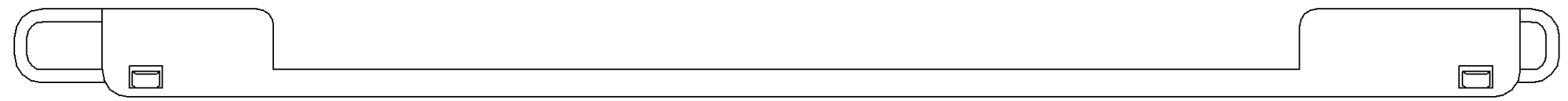
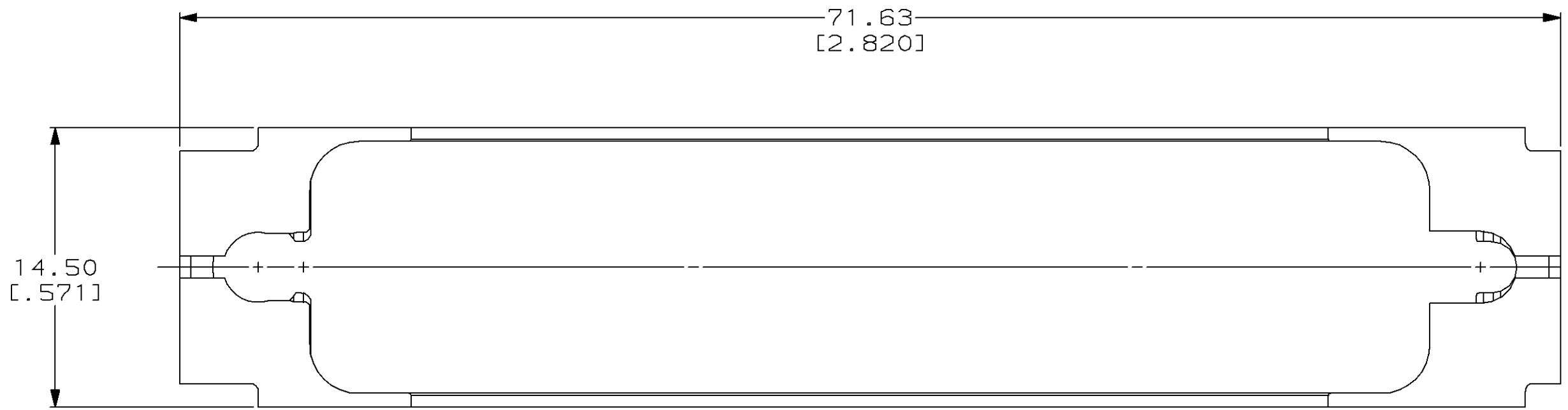


THIS DRAWING IS UNPUBLISHED. RELEASED FOR PUBLICATION, 19 .
 © COPYRIGHT 19 BY AMP INCORPORATED. ALL INTERNATIONAL RIGHTS RESERVED.

| LOC | DIST | P | F | ZONE | LTR | DESCRIPTION | DATE | APPD |
|-----|------|---|---|------|-----|-------------------------------------|----------|------|
| BD | 48 | | | | | 0 RLSE PER NPR 2639, WAS 89-5898-21 | 01/03/90 | - |
| | | | | | | A REV PER EC 0020-972-93 | 07/27/93 | SB |



METRIC

| | | | | |
|---|----------------------------|--------------------------|---|----------------------|
| DO NOT SCALE PRINT. UNLESS SPECIFIED DIMENSIONS IN mm [INCHES] TOLERANCES ON : 2 PLC DEC ± 0.13 [0.005] 3 PLC DEC ± - ANGLES ± - | | DR 1-3-90 L.SIPE | AMP INCORPORATED Harrisburg, Pa. 17105 | |
| MATERIAL STAINLESS STEEL PER ASTM A167 | CHK 1-5-90 R.STONE | APPD 1-11-90 B.TAYLOR | | |
| FINISH - | APPD 1-9-90 J.ASSINI | PRODUCT SPEC - | SIZE C | CAGE CODE 00779 |
| | APPLICATION SPEC IS6551 | WEIGHT - | SCALE 4:1 | DRAWING NO 749997 |
| | | | | SHEET 1 OF 1 |

749997-1
PART NO