

EMI/EMC FILTER

RoHS

TBA SERIES



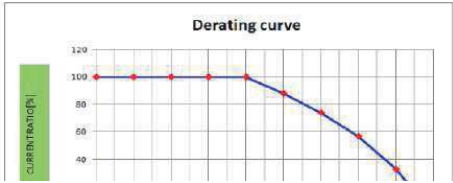
Features

- Screw & DIN rail mount
- Easy connection and installation. (DIN rail mount)
- Excellent filtering characteristics for both differential mode and common mode
- Safety approval: cCSAus, SEMKO+ENEC, CQC, KC, CE
(TBA-06B****, TBA-10B****, TBA-16B****, TBA-20B****, TBA-30B****)
cCSAus, SEMKO+ENEC, KC, CE
(TBA-40B****, TBA-**H****)
- Good shield effect by using metal cover

Applications

- Battery, ESS equipments
- Use in industrial equipment, medical, gaming, other ground current-sensitive applications
- Electric vehicle charger
- For equipment requiring very high noise attenuation
- Measuring and testing instruments

Specifications

Model	Rated Voltage (AC, DC)	Rated Current	Leakage Current (250V AC)	Operating Temperature
TBA-06B443A/B	250V (50/60Hz)	6A	0.5mA max.	-25°C ~ +85°C Including temperature rise 
TBA-10B443A/B		10A		
TBA-16B443A/B		16A		
TBA-20B443A/B		20A		
TBA-30B443A/B		30A		
TBA-40B443A/B		40A		
TBA-06H443A/B		6A		
TBA-10H443A/B		10A		
TBA-16H443A/B		16A		
TBA-20H443A/B		20A		
TBA-30H443A/B		30A		
TBA-40H443A/B		40A		

Note

Test Voltage : 1500V AC for 1 minute, line to ground (TBA-****3A/B)

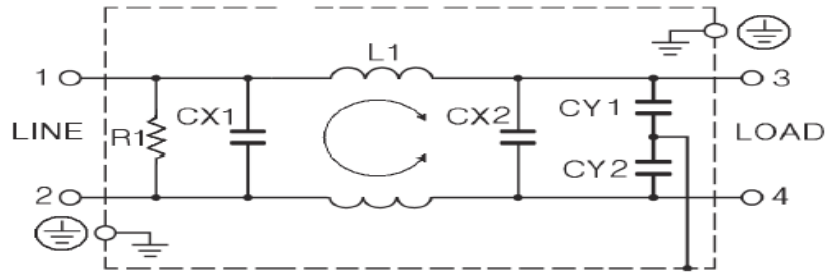
Insulation Resistance : 300 Mohm min. at 500V DC between line and ground

Voltage Drop : 1V max. at rated current

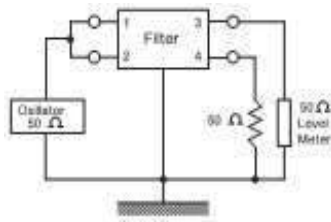
Model Number Construction

TB	A	06	B	44	D	A/B
Terminal block	A : Standard	Rated Current 06 = 6A 10 = 10A 16 = 16A 20 = 20A 30 = 30A 40 = 40A	B : Ferrite core H : Nano crystalline core	44=CX1,2 : 0.47uF(250VAC) NN=CX1,2 : 0.47uF(300VAC)	D=CY1,2 : 470pF 3=CY1,2 : 3300pF	A : Screw Mounting B : Din Rail

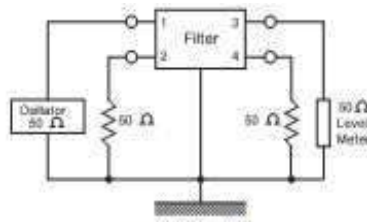
Circuit Diagram



Measurement Configuration



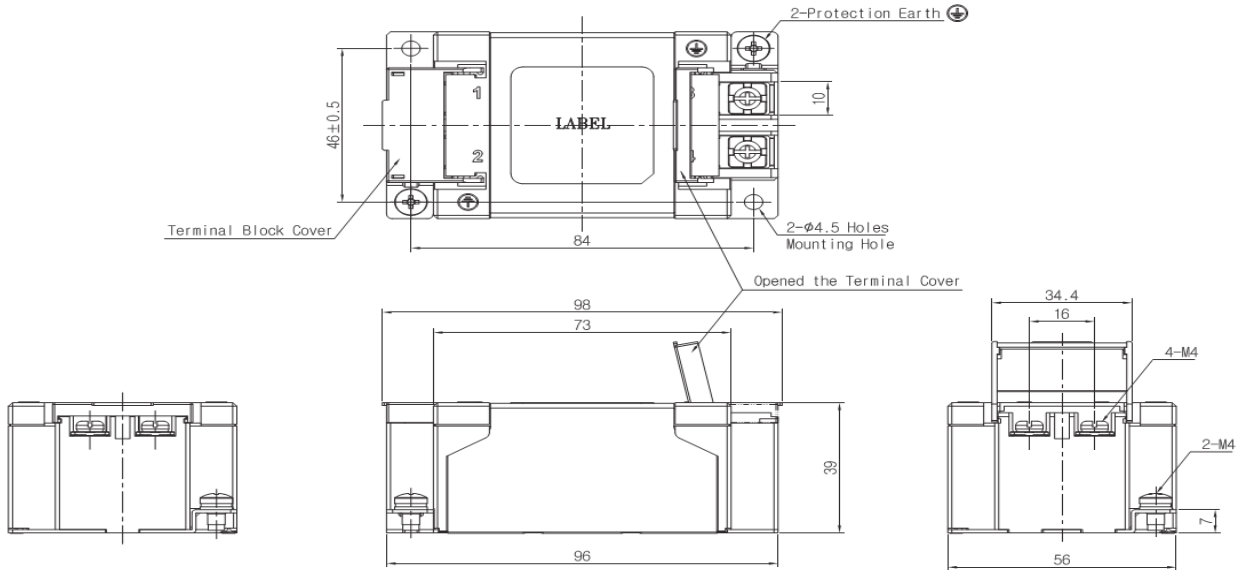
Common mode



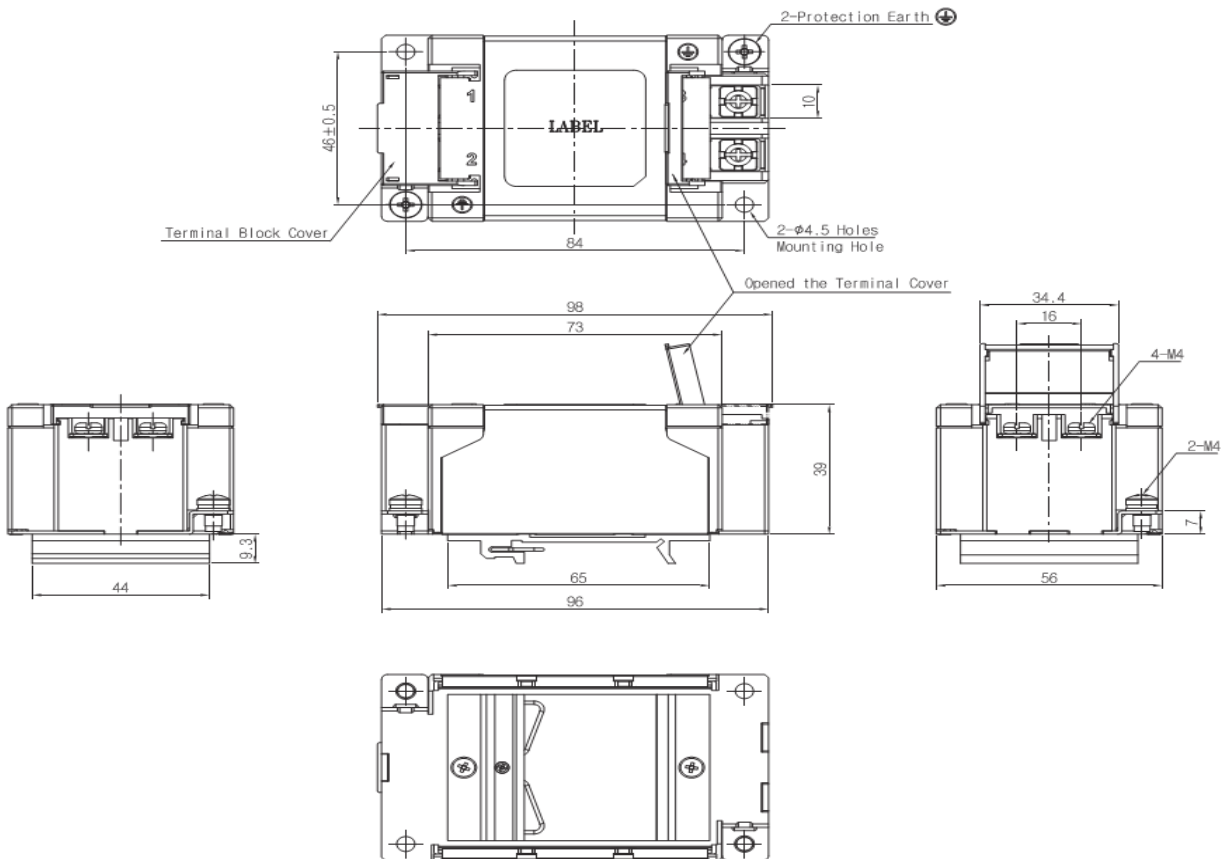
Differential mode

Shapes and Dimensions

TBA-****A (Mounting Plate Type)



TBA-****B (Din Rail Type)

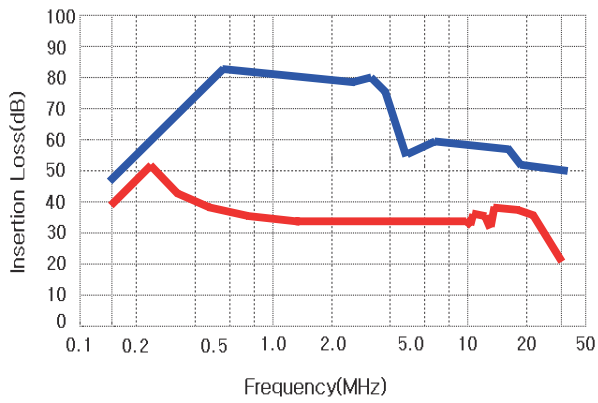


Attenuation Characteristics

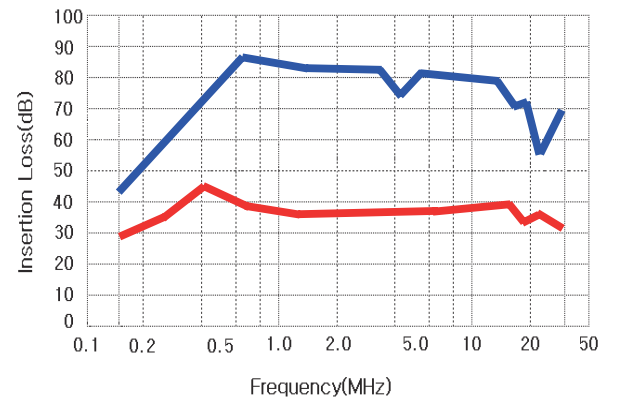
Common mode (—)

Differential mode (—)

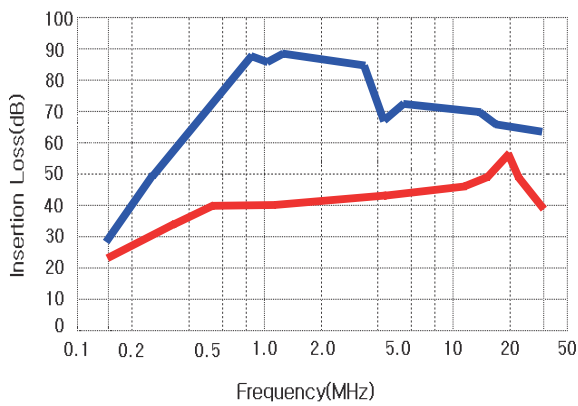
TBA-06B443A/B



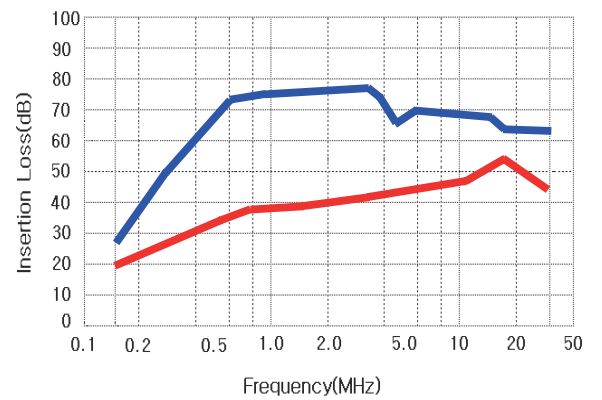
TBA-10B443A/B



TBA-16B443A/B



TBA-20B443A/B



TBA-30B443A/B

