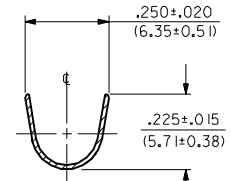
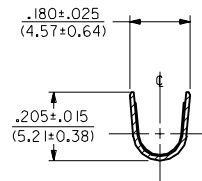
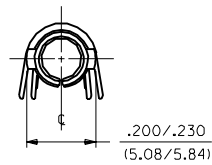


PART NO.	ENG. NO.	CHARACTERISTICS		
		MATERIAL	FINISH	FORM
018-12-1604	42547-0001	A	2	L
018-12-1603	42547-0002	A	2	C



SECT. "B-B"

SECT. "A-A"

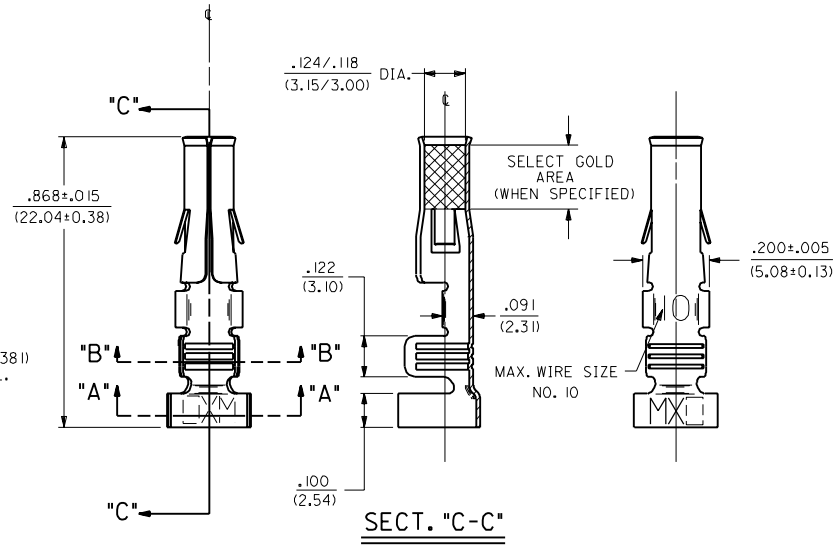


CHARACTERISTICS LEGEND

MATERIAL:
 A) PHOS. BRONZE, ALLOY #C51000; .013/(0.33) THICK, EXTRA HARD

FORM:
 L) LOOSE
 C) CHAIN

FINISH:
 ("P" PRECEEDING FINISH NO. DESIGNATES PREPLATED MATERIAL)
 1) UNFINISHED
 2) P122 ELECTRO TIN PLATE .000150/(0.0038) MIN. OVER .000030/(0.00076) MIN. NICKEL.



SECT. "C-C"

- NOTES:
1. TERMINAL FOR USE WITH .125/(3.17) SERIES HOUSINGS AND WILL ACCEPT 10 THRU 14 AWG WIRE HAVING A .180/(4.57) MAX. DIAMETER INSULATION.
 2. INSERTION FORCE: 6.0 LBS. MAX. WHEN TERMINAL IS INSERTED INTO .125/(3.17) DIA. CORE HOLE.
 3. PULL OUT FORCE: 30 LBS. MIN. RETENTION IN HOUSING .

B	ADD SELECT AREA ECR #UD 0230 3-5-90 RW
A	FINAL RELEASE ERO 20046 89/10/18 COMSTOCK
MFG. SH. REV. LTR.	REVISIONS

DIMENSIONS SHOWN METRIC (INCH UNLESS OTHERWISE SPECIFIED)		TOLERANCES: ANGULAR ± .001° TO .01°	
3 PLACE	± .010	---	---
2 PLACE	± .014	± 0.25	---
1 PLACE	---	± 0.35	---
DRAFT WHERE APPLICABLE MUST REMAIN WITHIN DIMENSIONS			
DRAWN BY: GMC		CHKD. BY: RW	
APP'D. BY: GWF		SCALE: 4 : 1	
PART NO. 42547		DRWG. NO. SD-42547-0	
SEE CHART		FILE NAME: 542547X1.DWG	
THIS DRAWING CONTAINS INFORMATION THAT IS PROPRIETARY TO MOLEX INC. AND SHOULD NOT BE USED WITHOUT WRITTEN PERMISSION.			
MOLEX INC. LISLE, ILL. 60532 U.S.A.	SHEET NO. 1 OF 1	DATE: 89/10/18	DIV. CP

42547