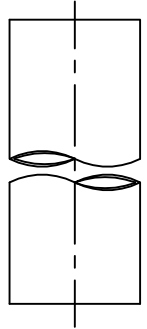
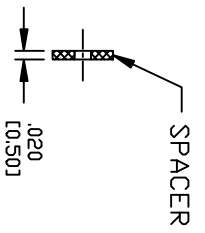
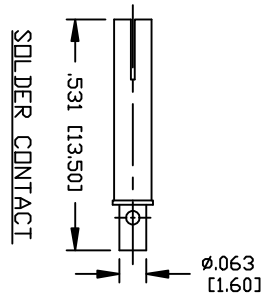
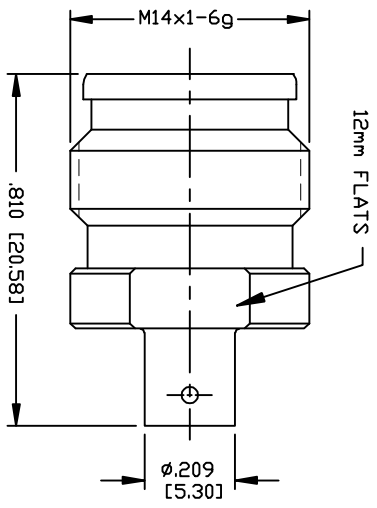


PART NO.		<b>RFD-225F-SR2</b>	
REV	DESCRIPTION	DWN	DATE
—	ENGINEERING RELEASE	CZS	10/06/20
		APPROVED	JDMC



SHRINK TUBING NOT TO SCALE

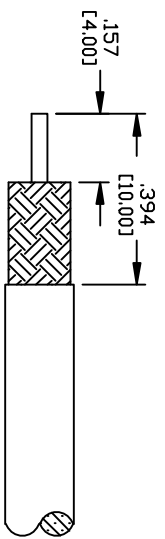
**SPECIFICATIONS:**

INTERFACE: IEC61169-66  
 IMPEDANCE: 50 Ohms  
 FREQUENCY RANGE: 0-6 GHz  
 INSERTION LOSS: -0.1 dB MAX  
 RL MEASURED ON: TTT-402-LF X2 CONNECTORS  
 RETURN LOSS: 32 dB DC-700 MHz  
 RETURN LOSS: 30 dB 700-2000 MHz  
 RETURN LOSS: 24 dB 2000-3000 MHz  
 RETURN LOSS: 22 dB 3000-4000 MHz  
 RETURN LOSS: 18 dB 4000-6000 MHz  
 3rd ORDER IM: <math>\leq -165\text{ dBc}</math> @ 700 MHz & 1900 MHz  
 3rd ORDER IM TEST METHOD: 2x43 dbm CARRIERS  
 DC TEST VOLTAGE: 2500 V @ SEA LEVEL  
 INSULATION RESISTANCE: 5000 M $\Omega$   
 TEMPERATURE RANGE: -55°C TO 85°C  
 MATING CYCLES: >100  
 NET WEIGHT: 0.05 lb  
 CERTIFICATIONS: RoHS  
 ENVIRONMENTAL: IEC 60529, IP68 MATED (2.5 BAR, 1 HOUR)  
 IEC 61169-1 CLAUSE 9.4.6 48 HOUR SALT MIST, 35°C  
 USED ON: RG-402/U, TTT-402-LF, FLEX-402, 1673A, SS402,  
 EZ-FLEX-402

#	DESCRIPTION	QTY	MATERIAL	FINISH
6	SPACER	1	PTFE	NATURAL
5	SHRINK TUBING	1	1/4" HEAT SHRINK	BLACK
4	GROUND RING	1	BeCu	CUSnZn ALLOY
3	CONTACT	1	PHOSPHOR BRONZE	SILVER
2	INSULATOR	1	PTFE	NATURAL
1	BODY	1	BRASS	CUSnZn ALLOY

CUSTOMER OUTLINE DRAWING  
 ALL DIMENSIONS ARE IN INCHES  
 UNLESS OTHERWISE SPECIFIED:  
 DIMENSIONS ARE IN MILLIMETERS  
 ARE REFERENCE ONLY

PROPRIETARY AND CONFIDENTIAL  
 THIS DRAWING CONTAINS INFORMATION PROPRIETARY TO RF INDUSTRIES. ANY UNAUTHORIZED USE OF THIS DRAWING IS EXPRESSLY PROHIBITED WITHOUT WRITTEN PERMISSION FROM RF INDUSTRIES. ANY VIOLATION IS PUNISHABLE UNDER U.S. COPYRIGHT LAWS.



RECOMMENDED STRIPING DIMENSIONS

**RF Industries**  
 DIVISION OF RF INDUSTRIES, LTD. (858) 549-6345 FAX  
 RFINDUSTRIES.COM  
 7610 MIRAMAR RD. SAN DIEGO, CA 92126  
 (858) 549-6340

**2.2/5 FEMALE SOLDER FOR RG-402 TYPE CABLE**

CABLE GROUP DWG #	RFD-225F-SR2	REVISION	—
FORMAT	A	SCALE	NTS
CONTROL #	000000	SHEET	1 OF 1