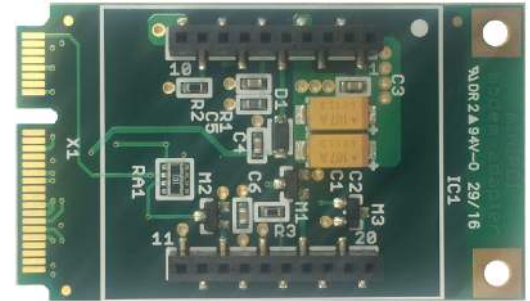




BRD-mPCIe-SW

The BRD-mPCIe-SW full size mini PCI express adapter board adds cellular connectivity to any device with a mini-PCIe slot—embedded PCs, laptops, industrial tablets or custom PC boards--without the cost and delay of obtaining FCC and carrier certification. The adapter board accepts NimbeLink's NL-SW-LTE-S7588 certified Skywire™ cellular modem, which is the smallest in the industry. The standard mini PCIe adapter, with choice of compact Skywire modem, fits easily within most of today's miniaturized devices.

BRD-mPCIe-SW is fully backed by a 3-year warranty, technical support and application assistance from BiPOM Electronics, Inc.

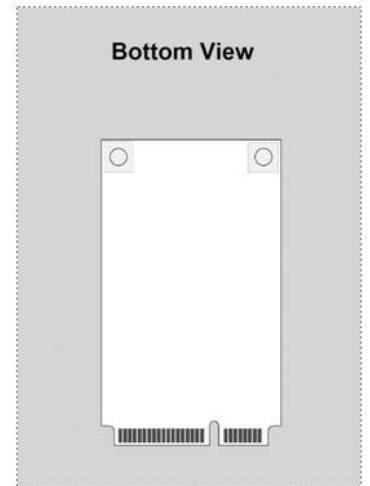
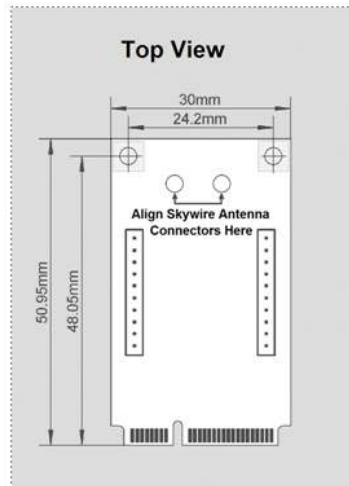


Features:

- Compact size fits directly onto boards with full size mini-PCIe slots
- Plug-and-play operation with Linux, Windows 7,8,10, and Embedded
- Customer can use any antenna without requiring re-certification

Advantages:

- Fast incorporation of Verizon, AT&T, T-Mobile and other cellular access without certification cost
- Eliminates the need for chip-down modem development
- Allows compact device layout
- Requires no software development on Linux and just addition of a USB driver on Windows



BRD-mPCIe-SW Specifications:

- Works with NL-SW-LTE-S7588 (-V and -T)
- Supply voltage: 3.3V from miniPCIe
- Active call current: 720mA - 1.5A
- Normal current: 29mA
- Power saving current: 1mA
- Temperature range: -40°C to +85°C
- Communication Method: USB
- Dimensions: 51 mm x 30 mm x 12 mm

Target Applications:

- Kiosks
- Digital signage
- Security panels
- Surveillance equipment
- Control panels

Ordering Information:

- BRD-mPCIe-SW
- Custom versions available



Skywire Inside

More details and Technical Manual are available for download at www.bipom.com

BiPOM Electronics, Inc. • Phone: 1-713-283-9970 • E-mail: info@bipom.com • Web: www.bipom.com

All trademarked names in this brochure are the property of respective owners.