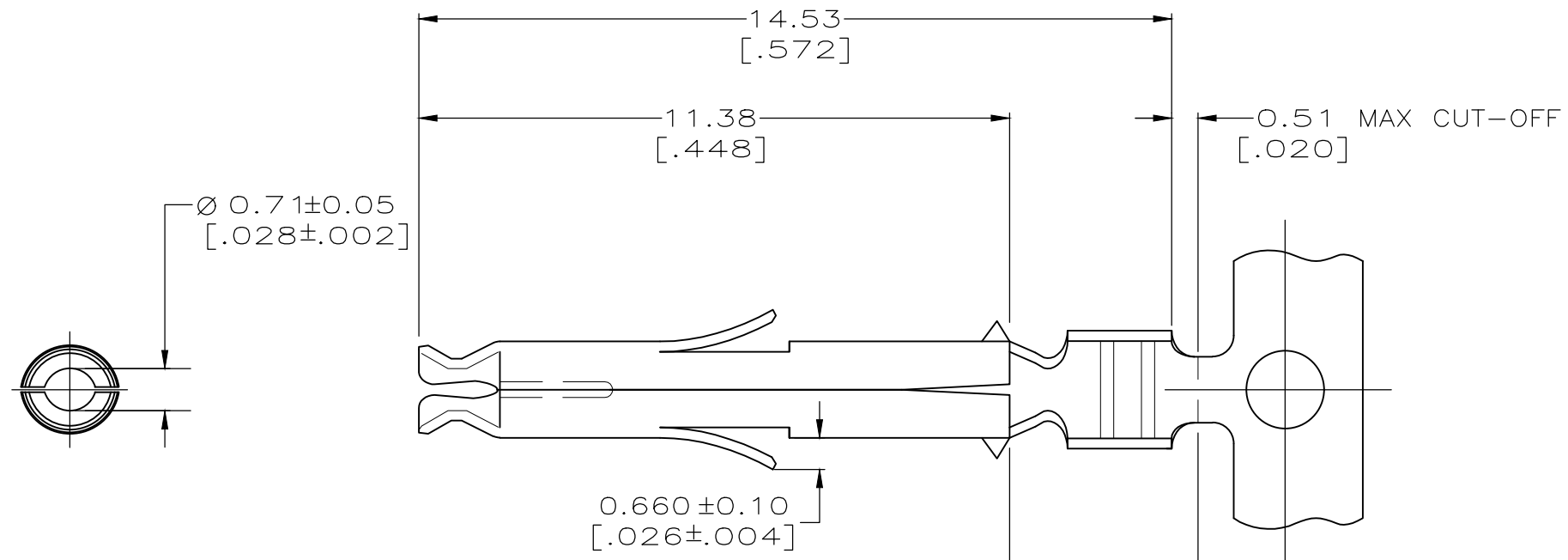
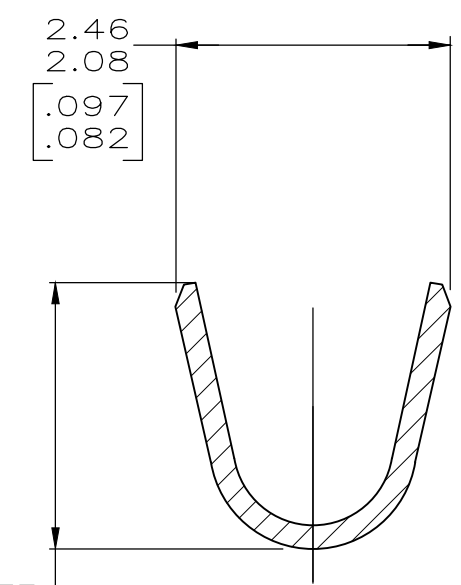


THIS DRAWING IS UNPUBLISHED. RELEASED FOR PUBLICATION
 © COPYRIGHT - By - ALL RIGHTS RESERVED.

REVISIONS					
P	LTR	DESCRIPTION	DATE	DWN	APVD
	G	ECO-18-020039	07JAN2018	RS	SG



- 1 WIRE RANGE: 0.3 – 0.9MM² (22–18 AWG).
- 2 INSULATION RANGE: 1.50–2.40[.060–.094] DIA.
- 3 DIMENSIONS IN BRACKETS ARE IN INCHES.
- 4 BOTTOM CONTACT STOP IS OPTIONAL CONSTRUCTION.
- 5 0.000762 [.000030] MIN GOLD IN LOCALIZED GOLD PLATE AREA AND 0.00254 [.000100] MIN BRIGHT TIN LOCALIZED TIN PLATE AREA OVER 0.00127 [.000050] MIN NICKEL.



5
1.50
[.059]
LOCALIZED
GOLD AREA

LOCALIZED TIN AREA
5

1.93
[.076]
A

4

5	0.20 [.008] BRASS	794831-3
NONE	0.20 [.008] BRASS	794831-2
PRE-TIN	0.20 [.008] BRASS	794831-1
FINISH	MATERIAL	PART NO

METRIC

THIS DRAWING IS A CONTROLLED DOCUMENT.

DIMENSIONS:	TOLERANCES UNLESS OTHERWISE SPECIFIED:
mm [INCHES]	
0 PLC	± -
1 PLC	± -
2 PLC	± 0.13 [.005]
3 PLC	± -
4 PLC	± -
ANGLES	± 0°30'
MATERIAL	FINISH
-	-

DWN	K. WHITAKER	20FEB2004
CHK	C. JONES	20FEB04
APVD	C. JONES	20FEB04
PRODUCT SPEC	-	
APPLICATION SPEC	-	
WEIGHT	0.000000	

STE TE Connectivity

SOCKET,
MINI UNIVERSAL MATE-N-LOK(TM)

SIZE	CAGE CODE	DRAWING NO	RESTRICTED TO
A3	00779	C-794831	-

CUSTOMER DRAWING SCALE 8:1 SHEET 1 OF 1 REV G