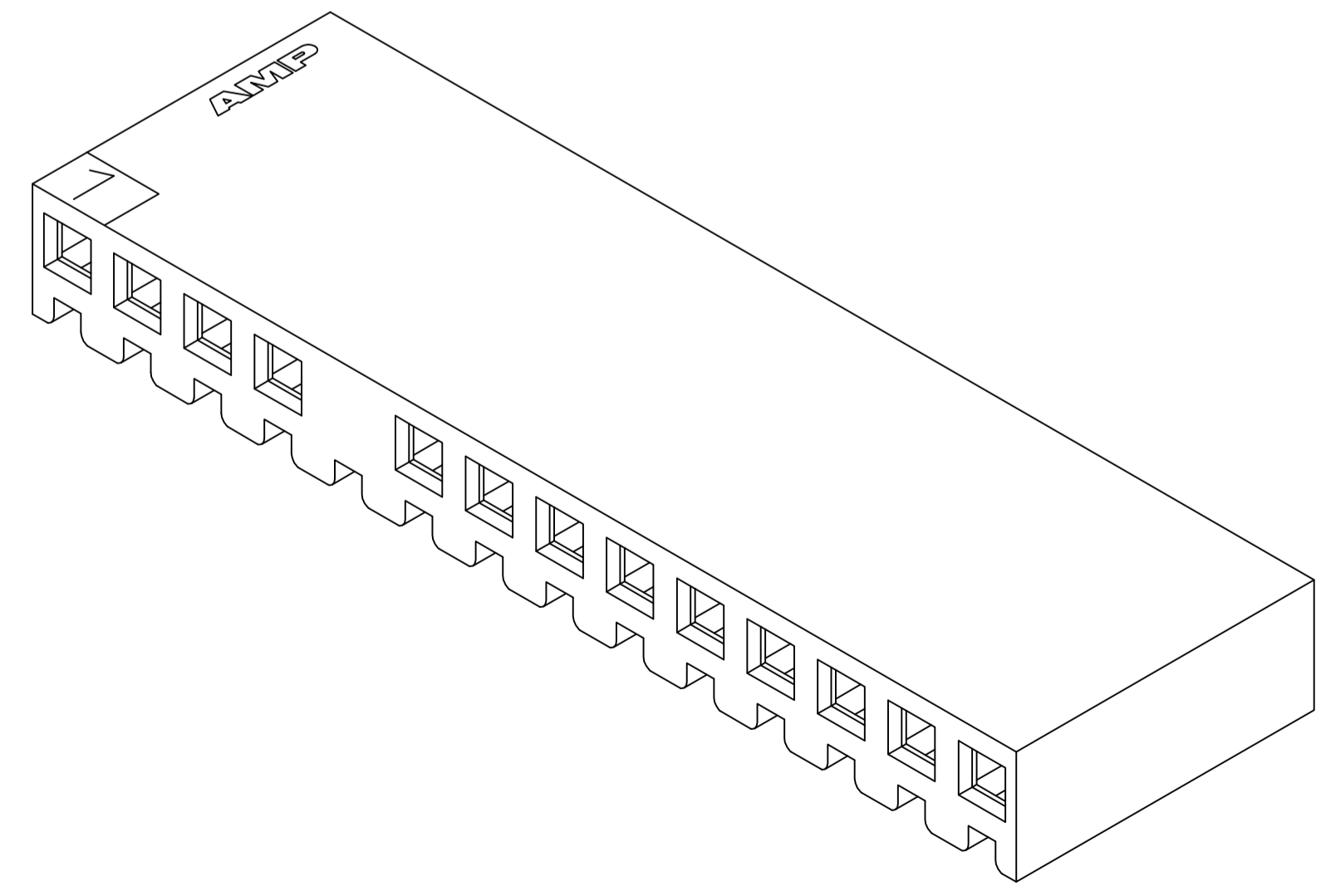
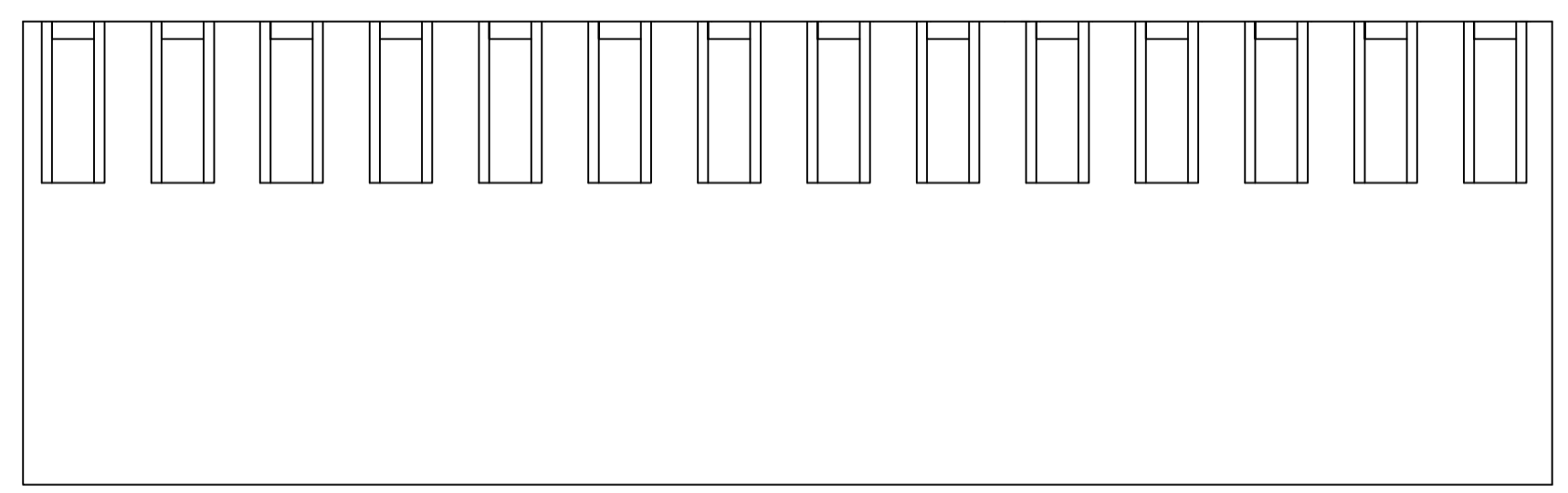
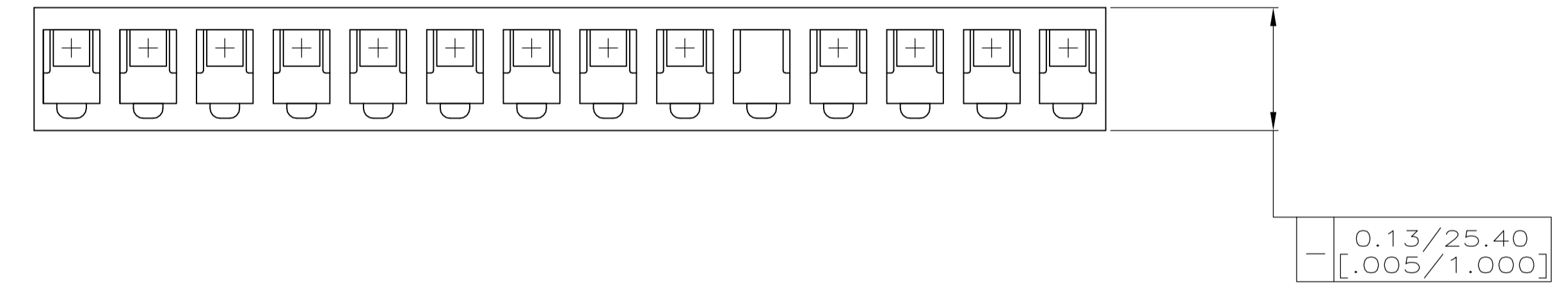
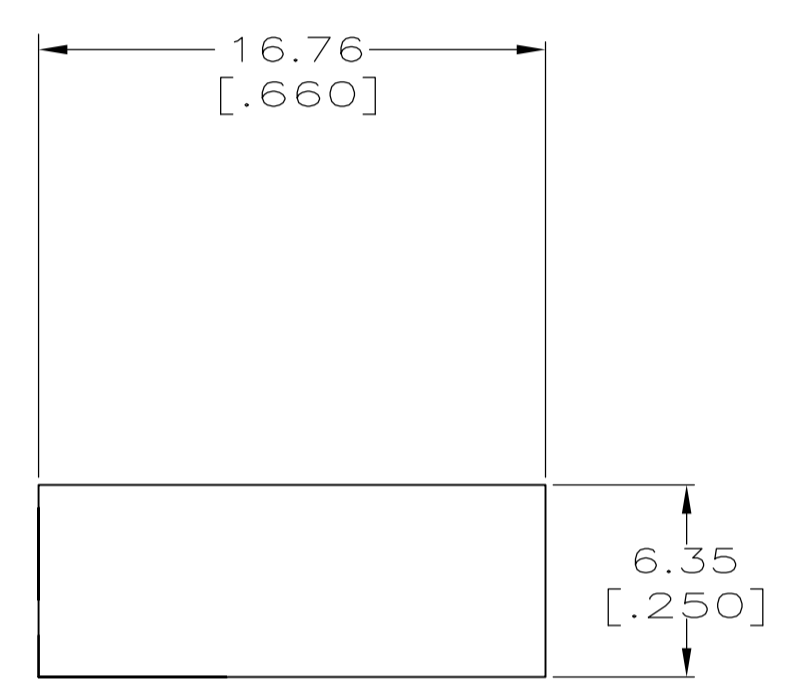
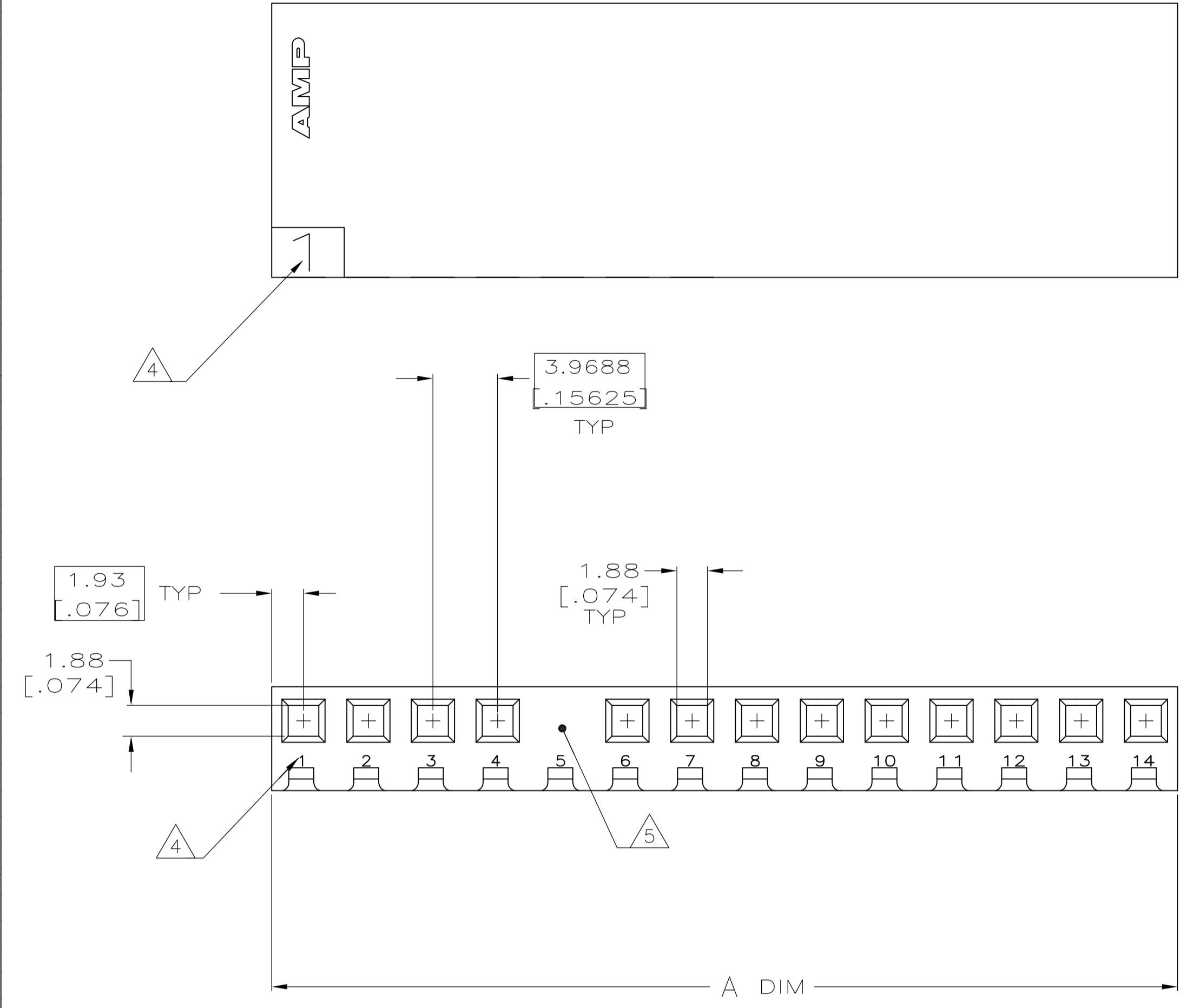
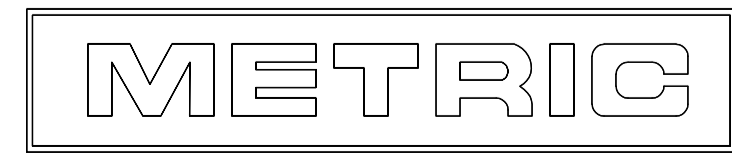


LOC		DIST		REVISIONS			
P	LTR	DESCRIPTION	DATE	DMN	APVD		
E		REVISED PER ECO-12-007807	06AUG12	KH	SM		

- 1 UNIT ACCEPTS 1.14 [.045] SQUARE OR ROUND POST.
- 2 PREFERRED SL-156 CONTACTS FOR USE WITH THIS UNIT ARE 350980, 640252, 640706, 640707, 641550 AND 770258 (ALL DASH NUMBERS).
- 3 UNIT ACCEPTS KEYING PLUG 640254-1 AND KEYING PIN 640255-1.
- 4 CIRCUIT I.D. NUMBER(S) TO BE LOCATED SEQUENTIALLY AS SHOWN OR ONLY NO. 1 CIRCUIT PLACED ON TOP OF HOUSING.
- 5 CIRCUIT 5 IS MOLDED CLOSED.
- 6 DIMENSIONS IN BRACKETS ARE IN INCHES.



3-DIMENSIONAL MODEL
NTS



55.45 [2.183]	14	1-644204-4
A ±0.25 [.010]	NO. OF CIRCUITS	PART NUMBER
DIN K SALMON 9-16-92 CHK R SWING 9-16-92 APVD F BEILES 10-1-92 NAME PRODUCT SPEC APPLICATION SPEC SIZE CAGE CODE DRAWING NO. RESTRICTED TO A1 00779 C=644204 CUSTOMER DRAWING SCALE 4:1 SHEET 1 OF 1 REV E		HOUSING WITHOUT LOCKING RAMP, CIRCUIT NO. 5 CLOSED, SL-156

THIS DRAWING IS A CONTROLLED DOCUMENT.	
DIMENSIONS:	TOLERANCES UNLESS OTHERWISE SPECIFIED:
mm [INCHES]	
0. PLC ± -	
1. PLC ± -	
2. PLC ± -	
3. PLC ± 0.13 [.005]	
4. PLC ± -	
ANGLES ± -	
MATERIAL NYLON,UL 94V-0 NATURAL	FINISH -