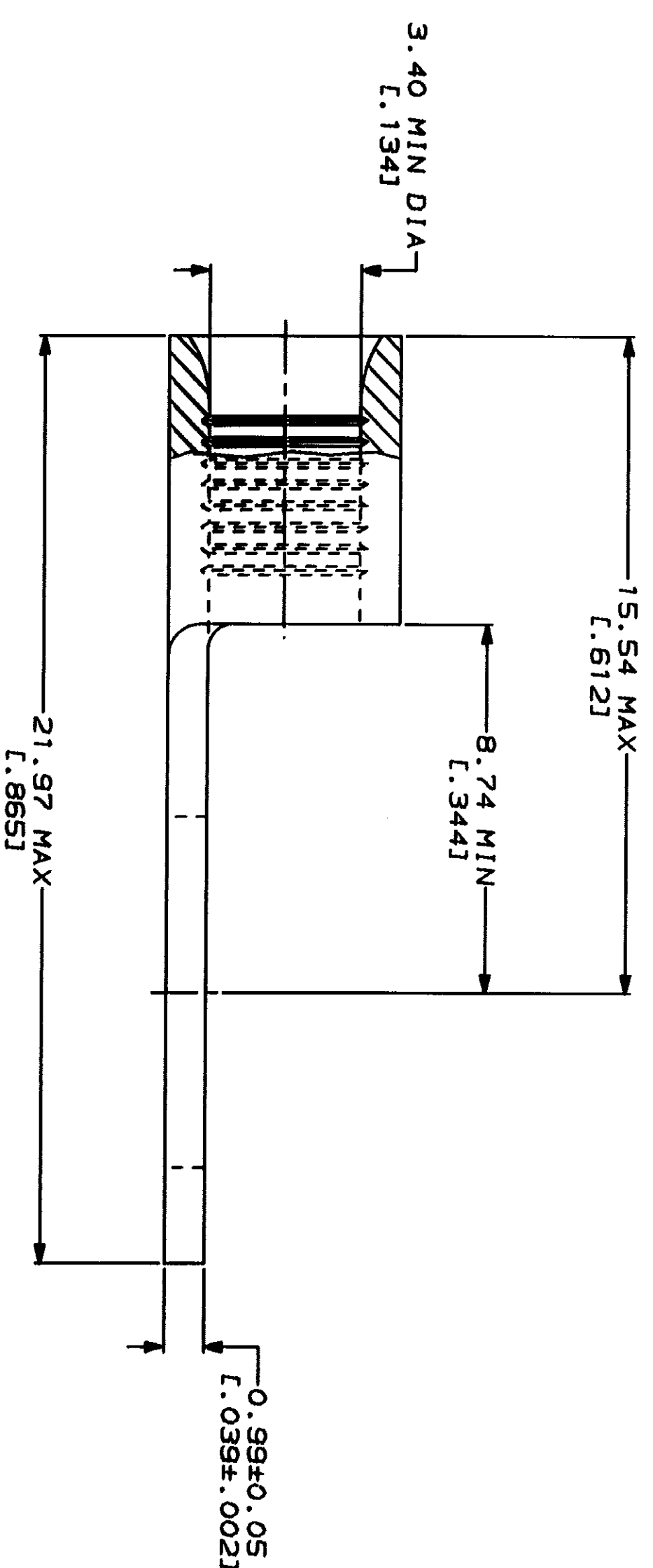


AMP	E13288 Listed
WIRE RANGE	
12-10 AWG STRANDED	12-10 AWG STRANDED
LR7189 Certified	MILITARY P/N AND CLASS
NOT CERTIFIED	NOT APPLICABLE

△ STAMP AMP 12-10* APPROX AS SHOWN



AMP INCORPORATED
CUSTOMER SERVICE SYSTEMS

MAX RECOMMENDED OPERATING TEMPERATURE: 170°C MAX

VOLTAGE RATING: NOT APPLICABLE

WIRE CROSS SECTIONAL AREA RANGE: 2.62-6.64mm² (5, 180-13, 100) CIR MILS STRANDED

DO NOT SCALE PRINT. UNLESS SPECIFIED DIMENSIONS IN INCHES TOLERANCES ON: 1 PLG DEC ± .005 ANGLES

MATERIAL: COPPER PER ASTM B-152 ANNEALED

FINISH: TIN PLATE 0.00254 [L. 000100] MIN THK PER MIL-T-10727

DR 2-9-93 TA BRINKMAN
CHK 2-9-93 DA PATTERSON
APPD 2-9-93 DE MILLER
APPD 2-9-93 JL MCKELVEY

PRODUCT SPEC

APPLICATION SPEC

WEIGHT

AMP Incorporated
Harrisburg, PA 17105-3508

34966 PART NO

TERMINAL, RING TONGUE, BUDGET

SIZE CAGE CODE DRAWING NO
SCALE 8:1 00779 34966