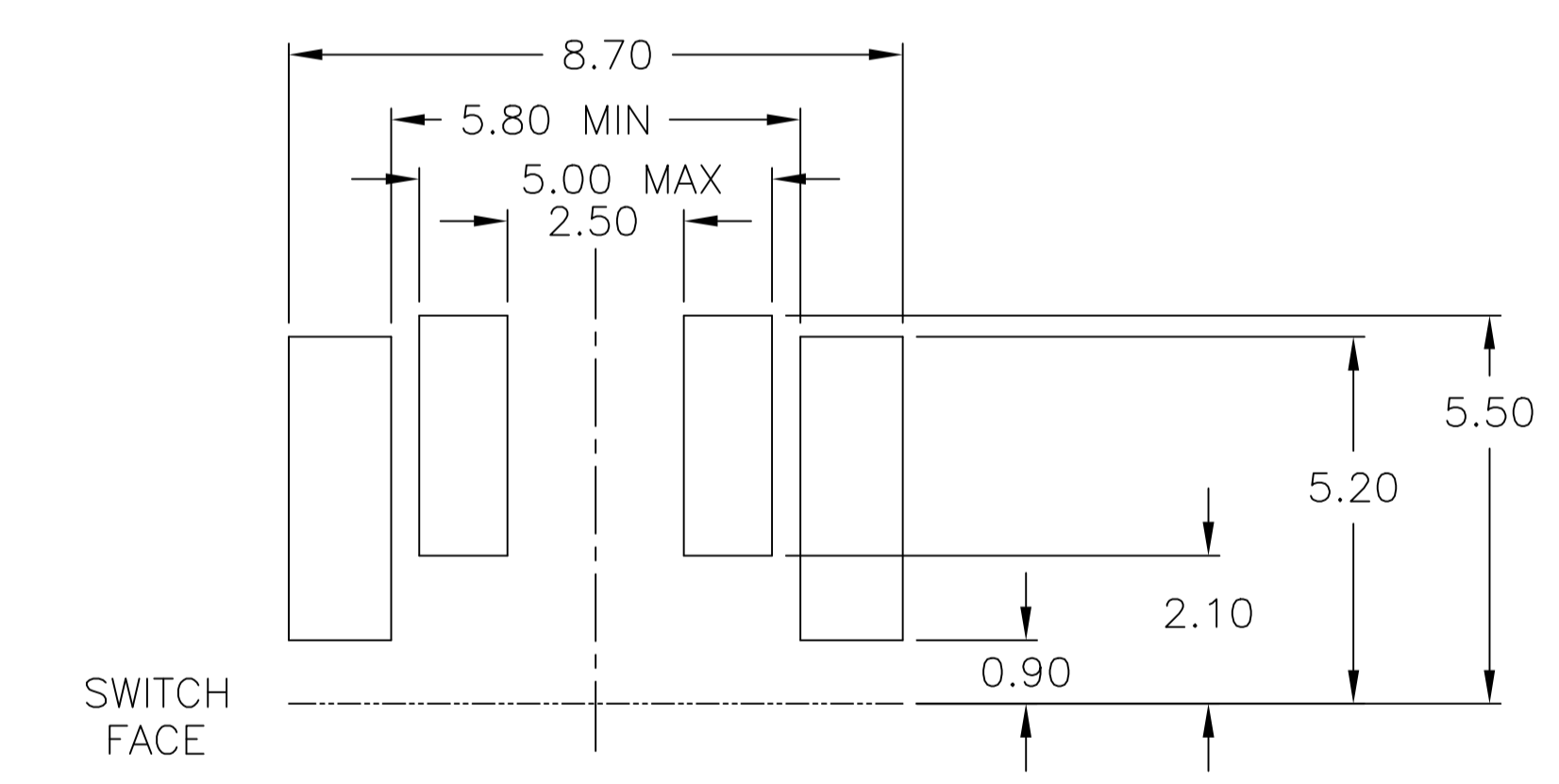
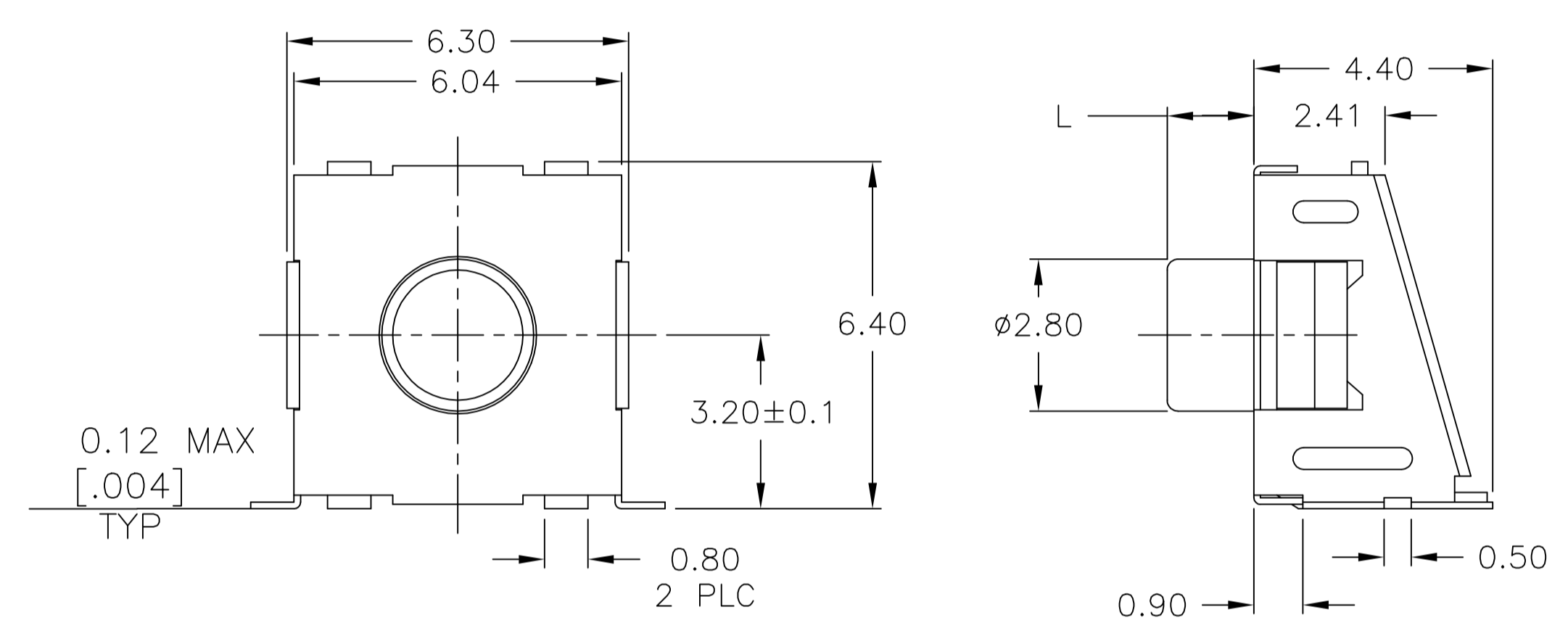
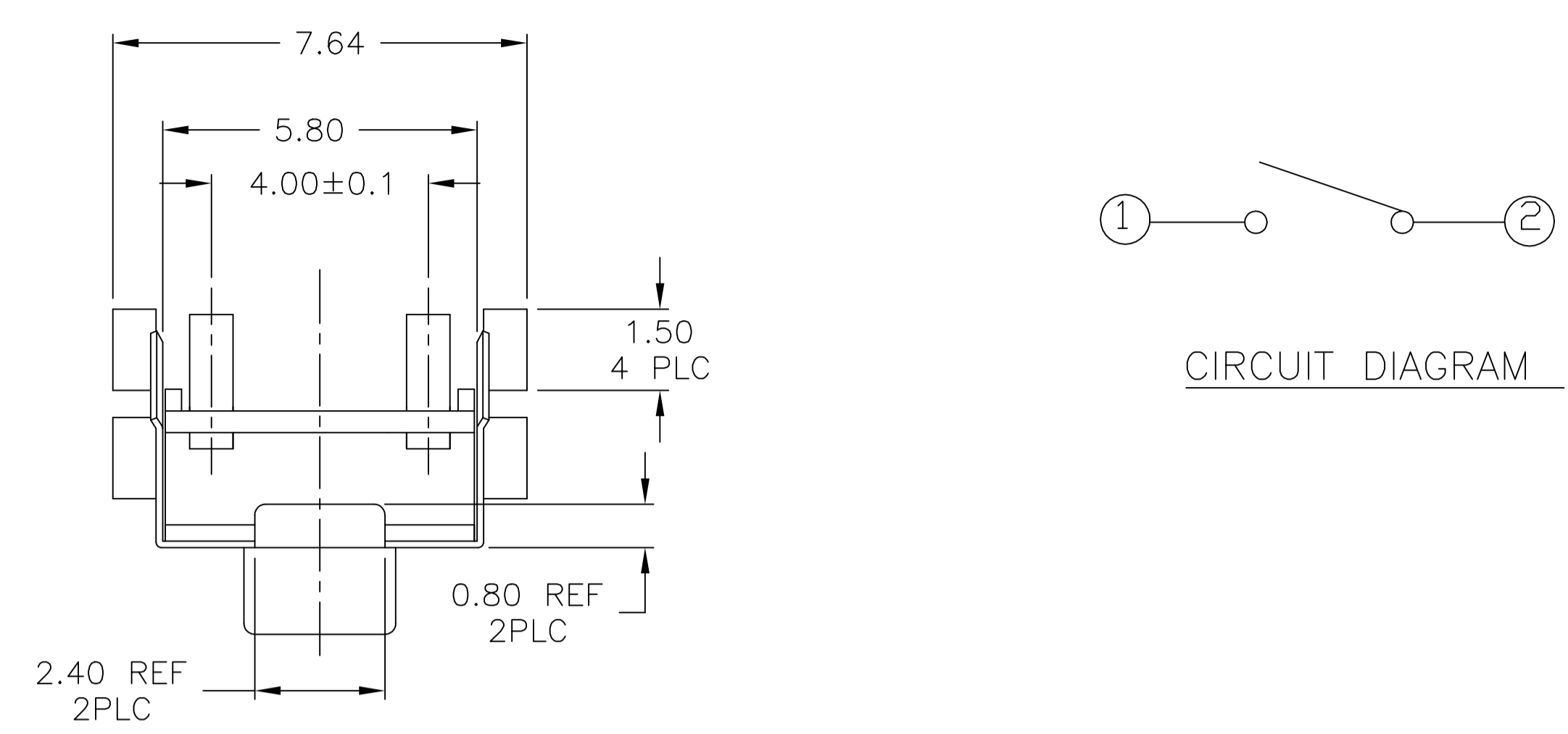
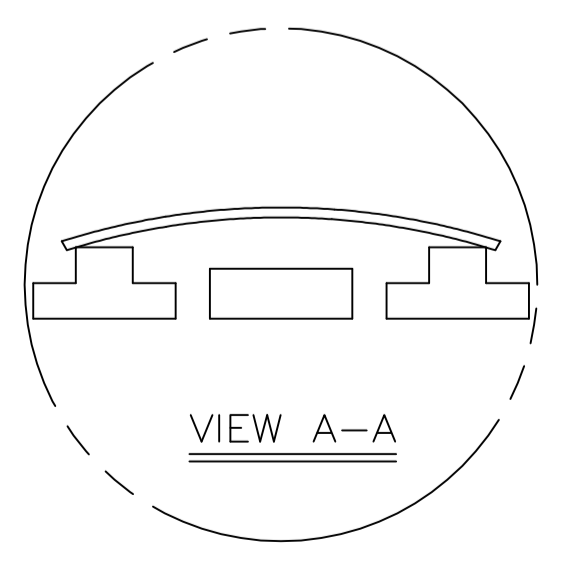


| REVISIONS |     |                           |           |          |
|-----------|-----|---------------------------|-----------|----------|
| P         | LYR | DESCRIPTION               | DATE      | DWN APVD |
| J         |     | REVISED PER ECO-17-014758 | 18DEC2017 | GCM PO   |



P.C.B MOUNTING SOLDER LAND DIMENSIONS



SPECIFICATIONS

MATERIALS

CASE: THERMOPLASTIC, UL94V-0, IVORY  
 ACTUATOR: SILICON RUBBER, COLOR-BLACK  
 CONTACT: STAINLESS STEEL, PLATING-SILVER  
 TERMINAL: BRASS, SILVER/NICKEL  
 BRACKET: NICKEL SILVER

ELECTRICAL

MAX CONTACT RATING: 50MILLIAMPS@24V DC  
 MIN CONTACT RATING: 10MICROAMPS@1V DC  
 INITIAL CONTACT RESISTANCE: 100 MILLIOHMS MAX, PER EIA RS-448, METHOD 1  
 INSULATION RESISTANCE: 100 MEGOHMS MIN @ 100VDC PER EIA RS-186-13E  
 DIELECTRIC STRENGTH: 500 VAC 50/60 HZ FOR 1 MINUTE  
 CONTACT BOUNCE: 10 MILLISECOND MAX PER EIA-448-18, METHOD 15

MECHANICAL

ACTUATOR OPERATING FORCE: SEE TABLE  
 ACTUATOR TRAVEL: 0.35±0.2mm

DURABILITY

UP TO 1,000,000 CYCLES, AT RATED LOAD PER EIA-RS-448, METHOD 8  
 FINAL CONTACT RESISTANCE: 200 MILLIOHMS MAX  
 CONTACT BOUNCE: 20 MILLISECONDS MAX  
 ACTUATOR FORCE: WITHIN ±30% OF INITIAL VALUE

ENVIRONMENTAL

OPERATING TEMPERATURE RANGE: -35°C to +85°C, 45% - 85% RH  
 STORAGE TEMPERATURE RANGE: -35°C to +85°C  
 HUMIDITY: 96 HOURS PER EIA-186-1E  
 INSULATION RESISTANCE: 10 MEGOHMS MIN  
 DIELECTRIC STRENGTH: 500VAC 50/60HZ FOR 1 MINUTE  
 CONTACT RESISTANCE: 100 MILLIOHMS MAX  
 DRY HEAT TEST: 85°C FOR 96 HOURS PER IEC 60068-2-2, TEST B,  
 NO CHANGE IN INITIAL ELECTRICAL AND MECHANICAL CHARACTERISTICS  
 COLD TEST: -35°C FOR 96 HOURS PER IEC 60068-2-1, TEST A;  
 NO CHANGE IN INITIAL ELECTRICAL AND MECHANICAL CHARACTERISTICS  
 THERMAL CYCLING: 5 CYCLES, -35°C to +85°C  
 HUMIDITY-TEMPERATURE CYCLING, EIA 364-31B, METHOD III  
 CONTACT RESISTANCE 100 MILLIOHMS MAX  
 RESISTANCE TO SOLDERING HEAT PER 109-201, COND B

SEALING PER IP67 - CONTACT RESISTANCE 100 MILLIOHMS MAX AND  
 MIL-STD-202F, METHOD 112 (TEST CONDITION D, EXCEPT WITH FLUID  
 TEMPERATURE OF 85°C±5°C AND IMMERSED FOR 60 SECONDS)

SOLDERABILITY: PER EIA-364-52, CLASS 1, CATEGORY 2

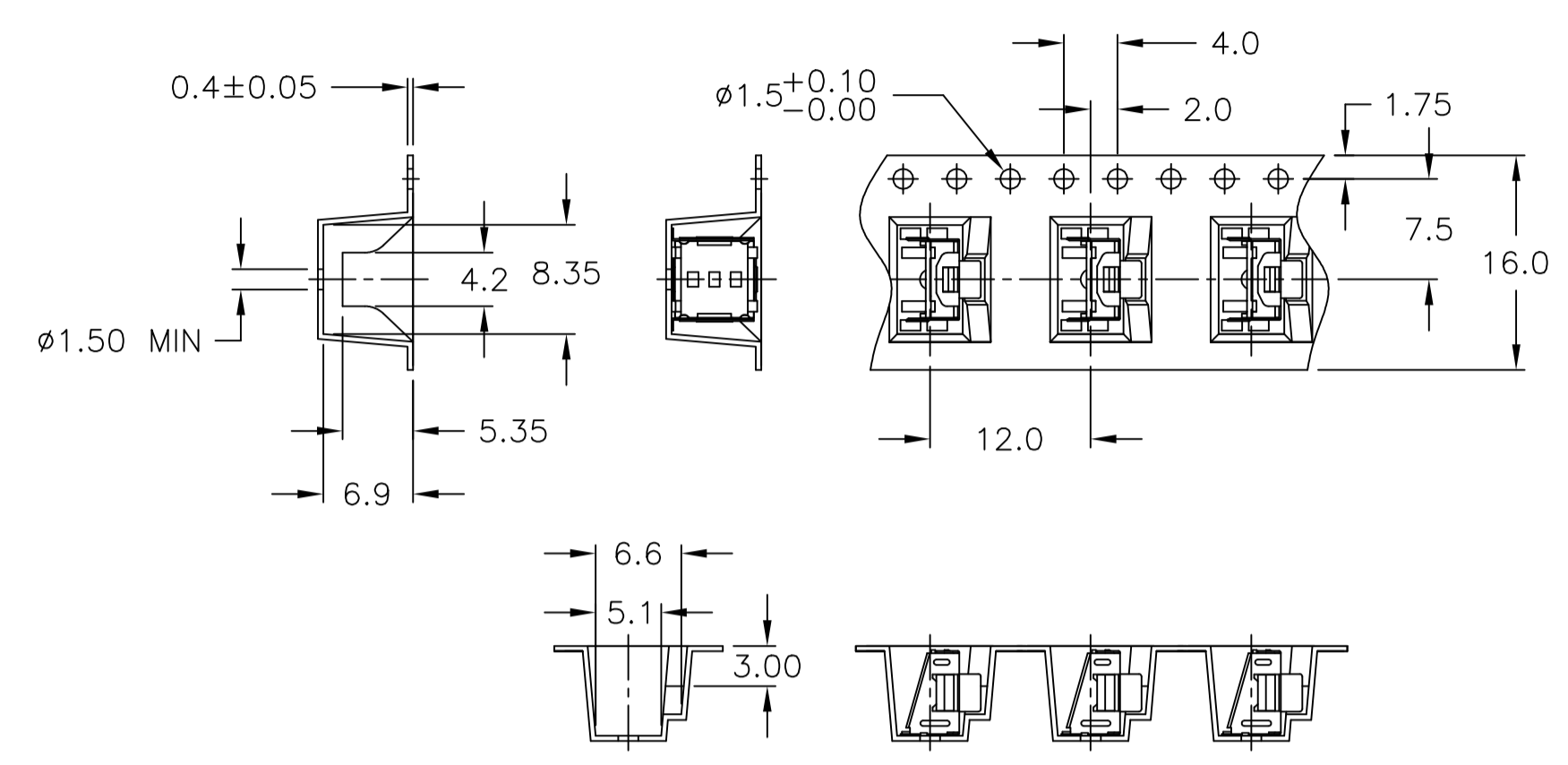
- 1 PARTS TO BE PACKAGED ON TAPE AND REEL PER EIA-481
- 2 ALL MATERIALS AND FINISHES SHALL COMPLY WITH EU DIRECTIVE 2002/95/EC OF 27JAN2003 (ROHS)
- 3 OBSOLETE PARTS: OBSOLETE CIS STREAMLINING PER D.RENAUD/D.SINISI

|   |          |       |      |           |                 |        |           |
|---|----------|-------|------|-----------|-----------------|--------|-----------|
| 1 | OBSOLETE |       | 16mm | T&R       | 260±100gf       | 3.96mm | 1571407-4 |
| 3 | OBSOLETE | N/A   | N/A  | BULK      | 260±100qf       | 3.96mm | 1571407-3 |
| 1 |          |       | 16mm | T&R       | 260±100qf       | 1.60mm | 1571407-2 |
|   |          | N/A   | N/A  | BULK      | 260±100gf       | 1.60mm | 1571407-1 |
|   |          | Pitch |      | Packaging | Operating force | Dim L  | TE P/N    |

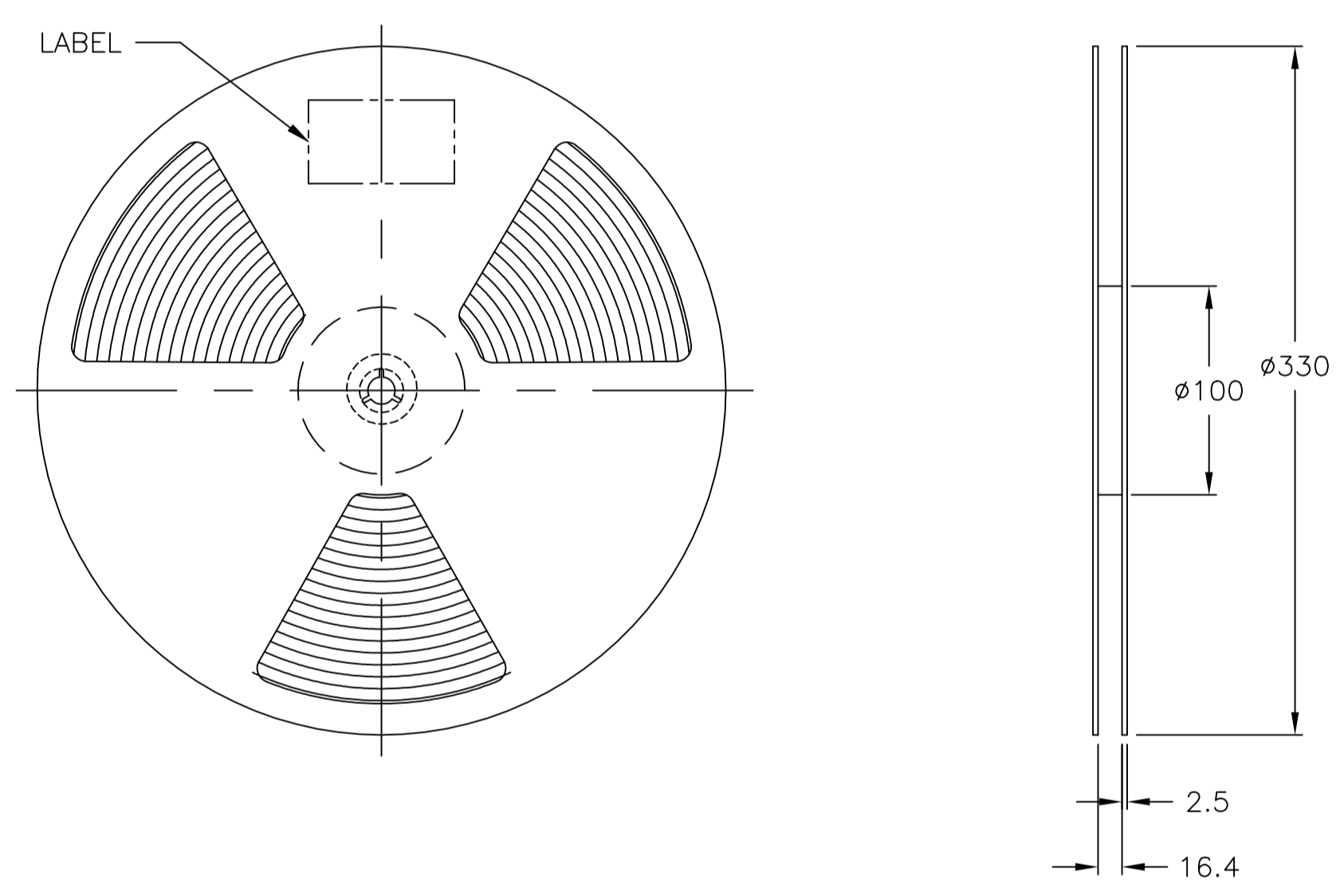
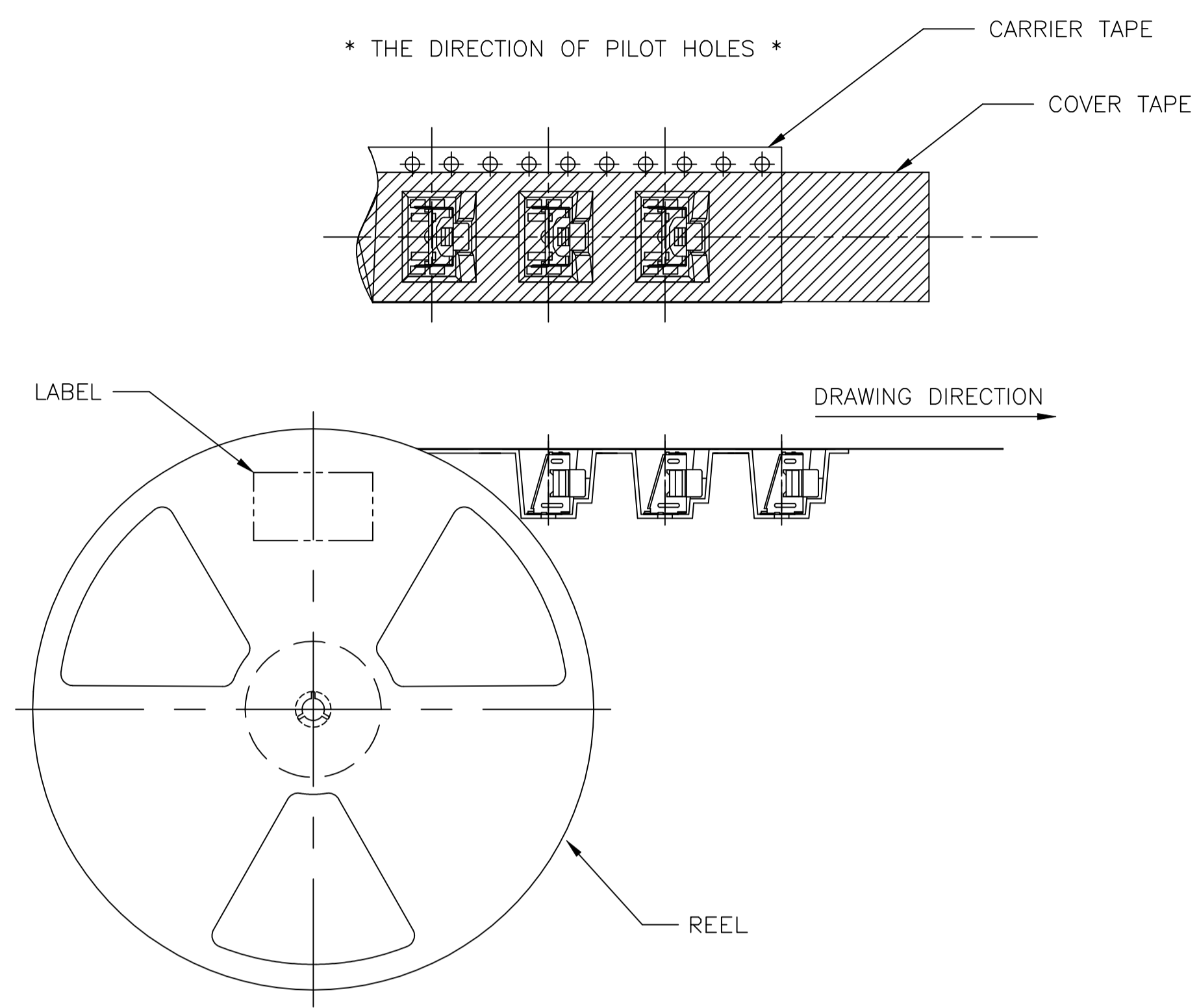
| DIMENSIONS: |   | TOLERANCES UNLESS OTHERWISE SPECIFIED: |        | DRAWING NO |         |
|-------------|---|--|--------|------------|---------|
| mm          |   |  |        | 00779      | 1571407 |
| 0 PLC       | ± |  |        |            |         |
| 1 PLC       | ± |  |        |            |         |
| 2 PLC       | ± | 0.30                                   | [0.12] |            |         |
| 3 PLC       | ± |  |        |            |         |
| 4 PLC       | ± |  |        |            |         |
| ANGLES      | ± |  |        |            |         |
| FINISH      |   |  |        |            |         |

| REVISIONS |     |             |      |          |
|-----------|-----|-------------|------|----------|
| P         | LYR | DESCRIPTION | DATE | OWN APVD |
| -         | -   | SEE SHEET 1 | -    | -        |

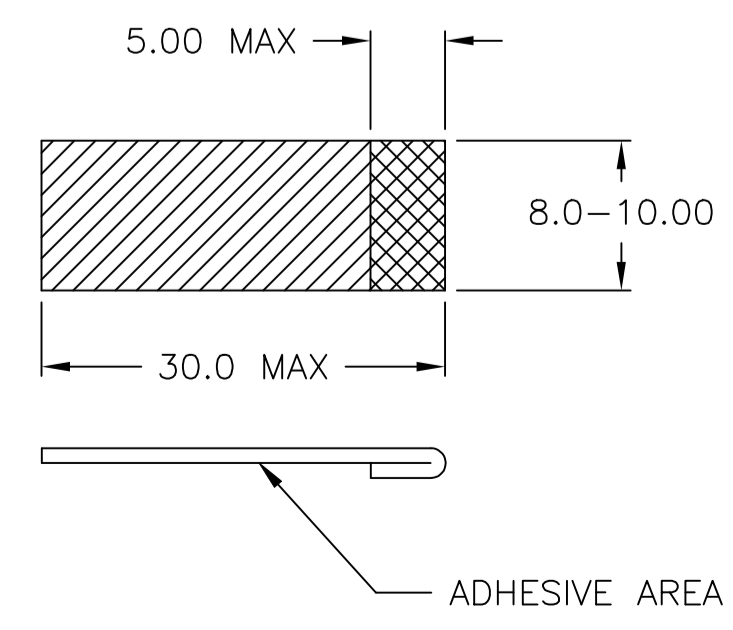
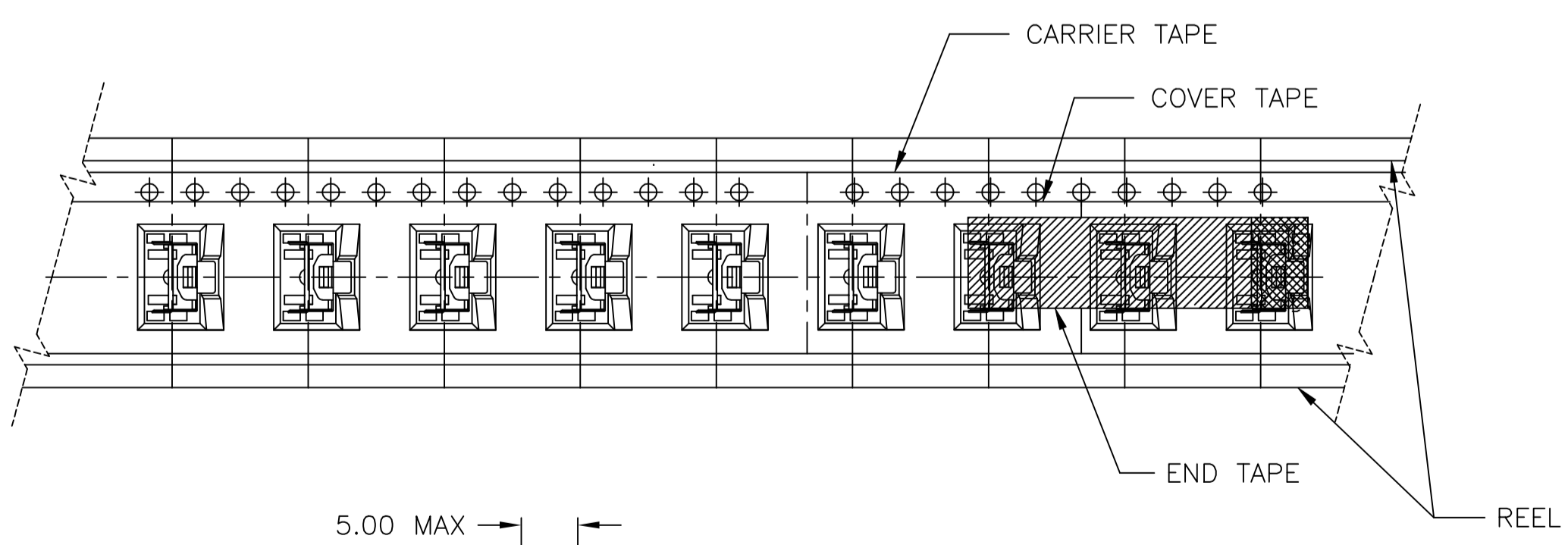
\* THE DIMENSION OF CARRIER TAPE, COVER TAPE AND REEL \*



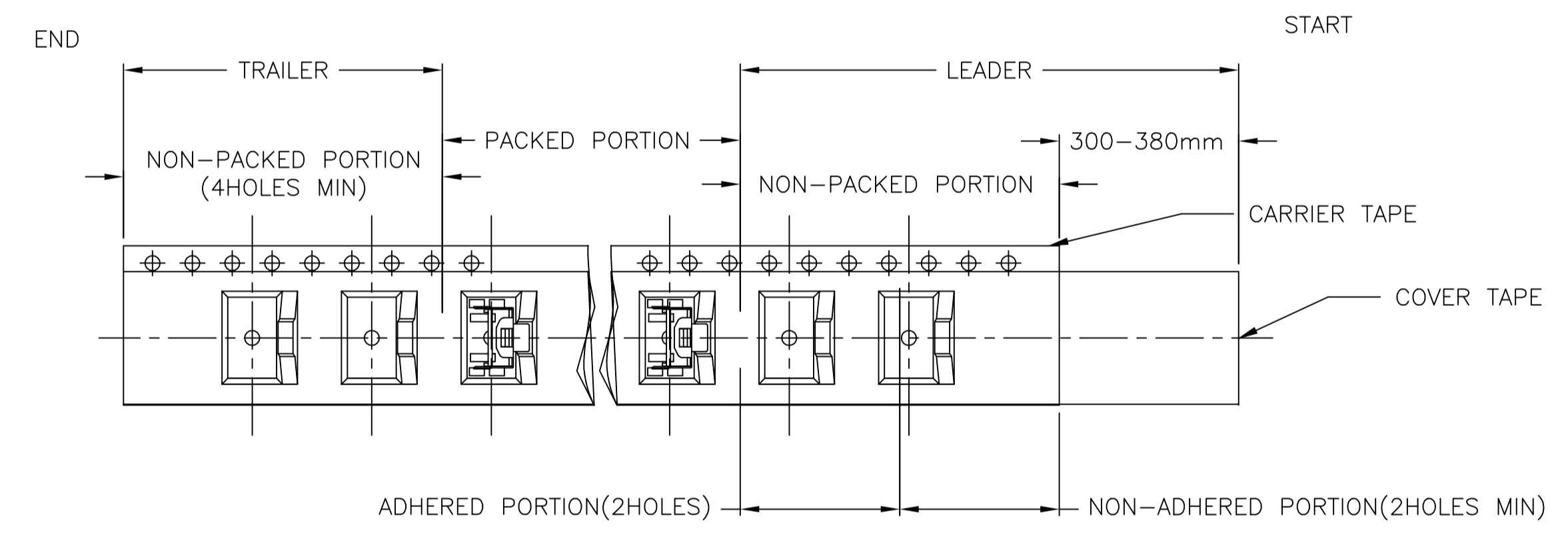
\* THE DIRECTION OF PILOT HOLES \*



\* END TAPE \*



\* THE SPECIFICATION FOR PACKAGING \*



|  |  |                  |                  |                            |                    |
|--|--|------------------|------------------|----------------------------|--------------------|
| THIS DRAWING IS A CONTROLLED DOCUMENT. |  | DWN<br>M.BINNER  | 09DEC02          | <b>STE</b> TE Connectivity |                    |
| DIMENSIONS: mm                         |  | CHK<br>M.SARVER  | APVD<br>M.SARVER |                            |                    |
| TOLERANCES UNLESS OTHERWISE SPECIFIED: |  | APPLICATION SPEC |                  | SIZE<br>A1                 | CAGE CODE<br>00779 |
| 0 PLC ± -                              |  | RESTRICTED TO    |                  | DRAWING NO<br>1571407      |                    |
| 1 PLC ± -                              |  | MATERIAL         |                  | SCALE<br>2:1               |                    |
| 2 PLC ± 0.30[.012]                     |  | WEIGHT<br>0      |                  | SHEET<br>2                 |                    |
| 3 PLC ± -                              |  | CUSTOMER DRAWING |                  | OF<br>2                    |                    |
| 4 PLC ± -                              |  | SCALE            |                  | REV<br>J                   |                    |
| ANGLES ± -                             |  | SCALE            |                  | REV                        |                    |
| FINISH -                               |  | SCALE            |                  | REV                        |                    |